



Active Transportation & Trails Workshop

January 2021



Workshop Agenda

- ATTMP
 - Existing Plan and Update
- Trail Types and Standards
- Trail Maps
 - Community Maps
 - Links between Communities
- Highlight Trail Projects Completed
- Question, Comments, Suggestions and Input



Active Transportation & Trails Master Plan

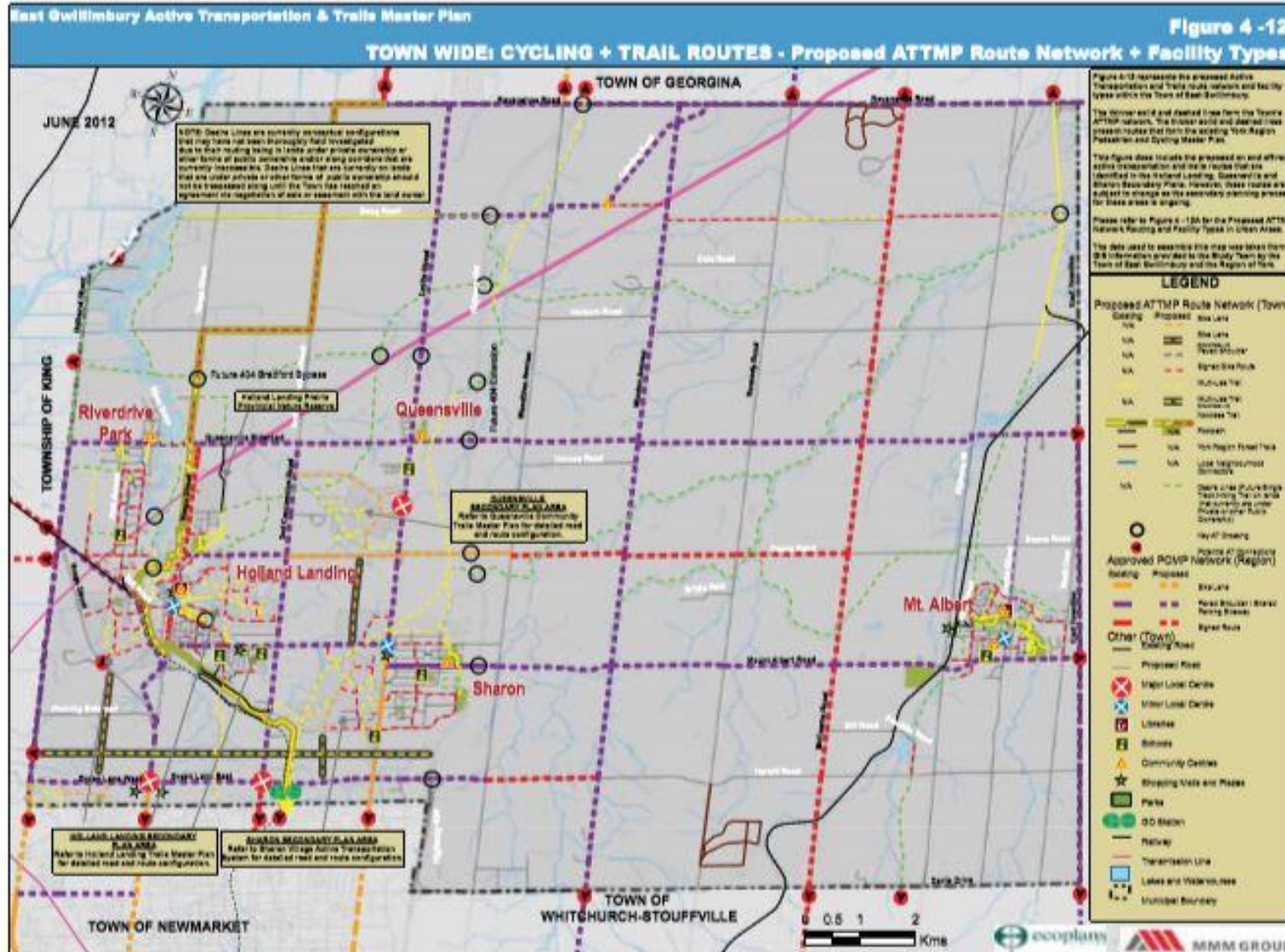
- Trail Network
- Plans (Short, Medium and Long-Term)
- Financial Plans

Update

- Trail Safety
- Signage Program
- Trail Guide and Interactive Program



Active Transportation and Trails Network



Investment in Trails

Investment in Trails over the past 5 years

Investment in \$	Km of Trails added over 5 Years
+/- \$15.5M*	>30 km

*Majority of new trail construction funded by Development Charges with no cost to the tax base.



Safety Signage & Interaction



Trail Safety Signage
Share the Trail – Collingwood, ON



Trail Wayfinding and Educational and Interpretive Signs
Evergreen Brickworks – Toronto, ON

Interactive Trails Guide and
Potential App



Trail Types and Standards

Recreational Trail System Standard



**3M Wide Compacted Granular
Peggy's Wood**



**Paved Steep Grade Changes with Protective Barrier
Peggy's Wood Trailhead Switchback**

Trail Types and Standards

Multi-Use Path and On Street Cyclepath Standard

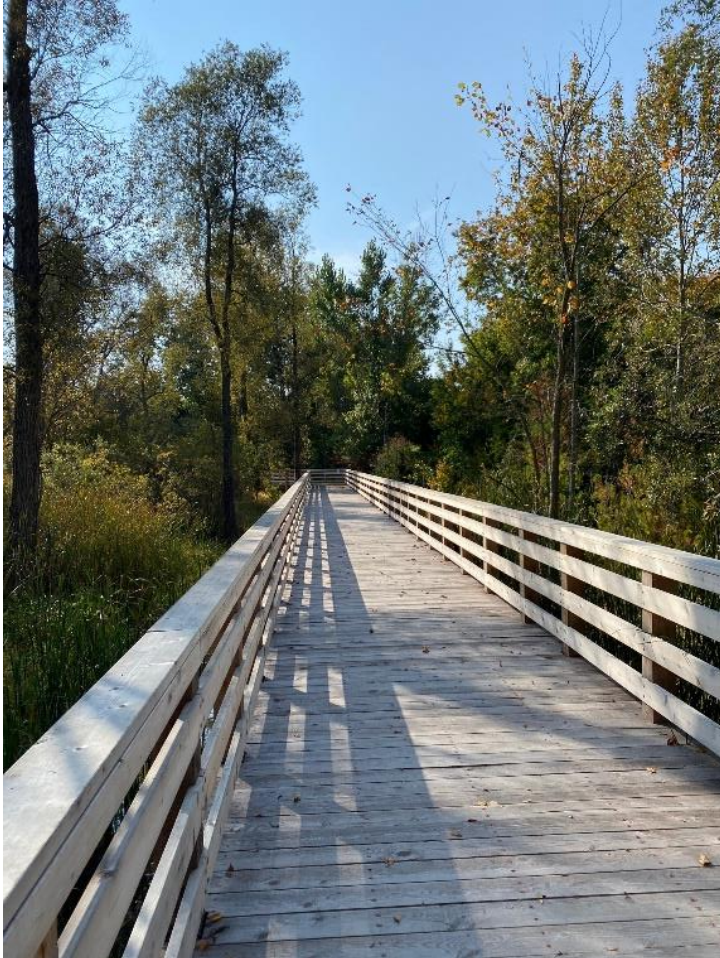


2-3M Multi-use Path (Paved or Concrete)
Path from Children of Peace Park to Civic Centre Precinct



On-street Cycle Tracks and Cycle Lanes (paved and marked)

Boardwalk and Bridge Standard



**2.5M Wide Boardwalk and Railing
Sharon Creek Trail**



Engineered Steel Pedestrian Bridge Crossing

Trail Development Timing

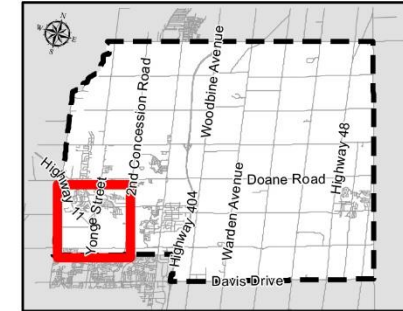


Trail Development Timing



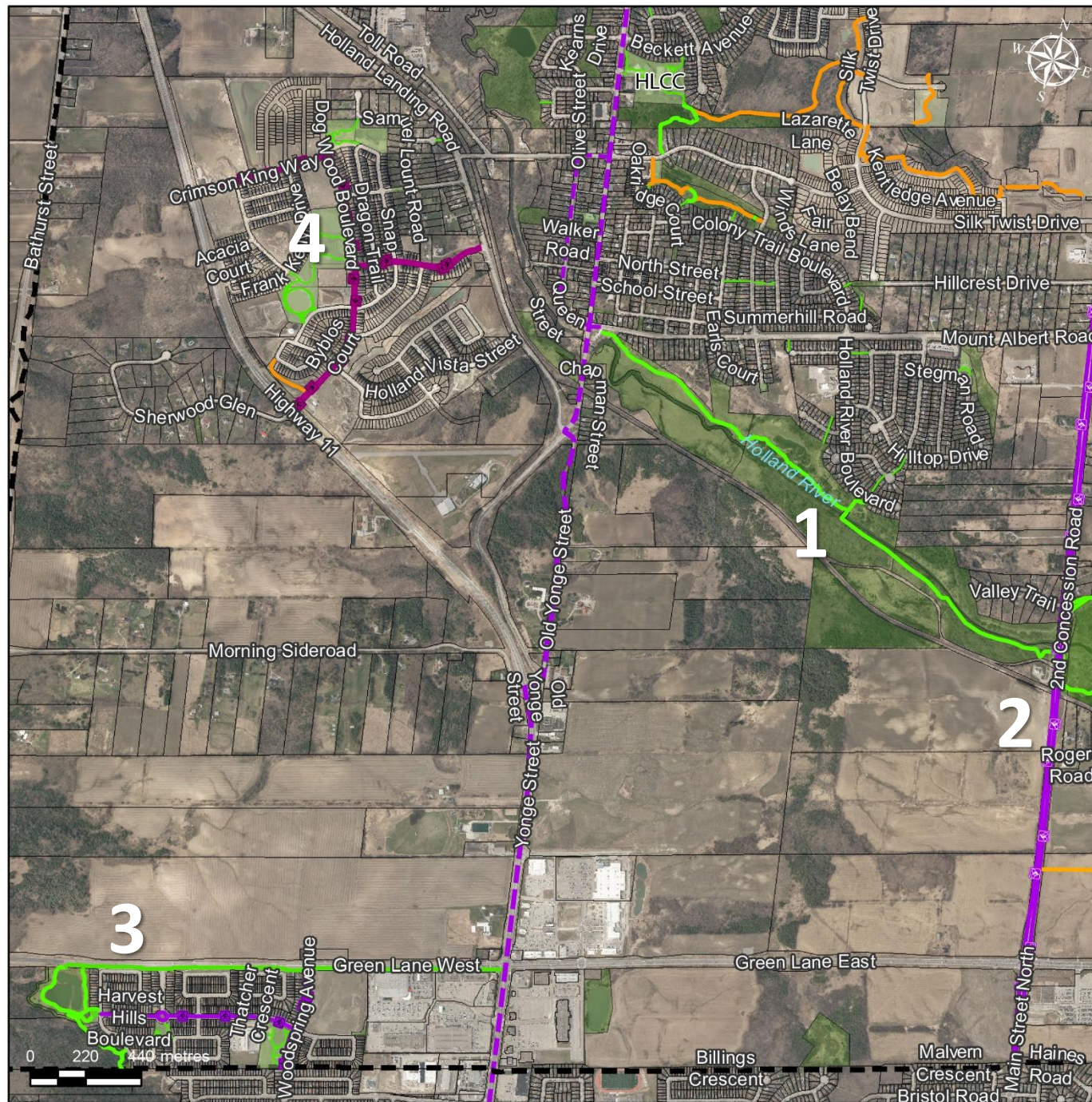
Trail Development Timing





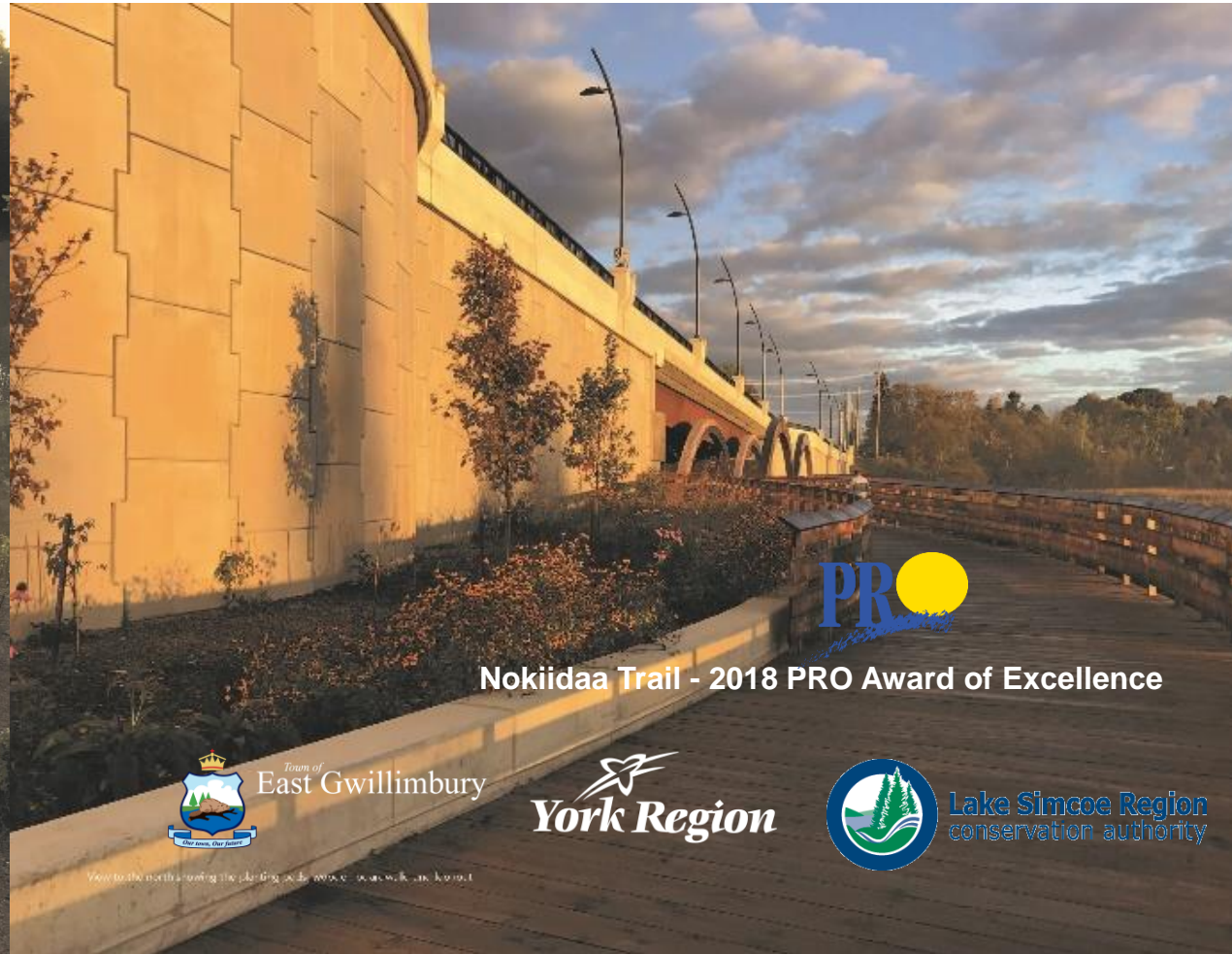
Legend

- Trail
- On-Street Route
- Trail
- Proposed On-Street Route
- Desire Line- On-Street Route
- Desire Line- Trail
- Parks
- Open Space



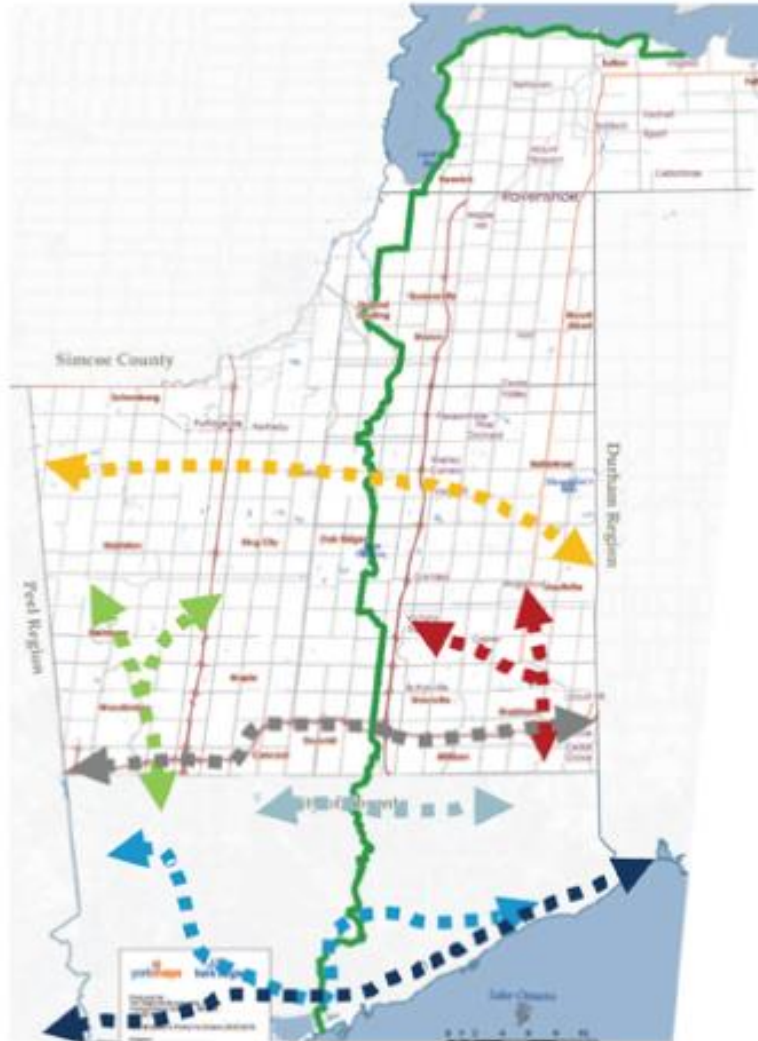
- 1 Nokiidaa Trail**
- 2 2nd Concession**
- 3 Peggy's Wood and Greenlane Multi-Use**
- 4 North West Holland Landing Development**
 - Samuel Lount
 - Ridgeview
 - Future LRT

Nokiidaa Trail Boardwalk and Bridge




EG and the Lake to Lake Trail

Lake to Lake Connections



Major Connecting Routes

-  Greenbelt Route/Oak Ridges Trail
Connecting the Golden Horseshoe & Oak Ridges Moraine
-  Humber River Trail
Linking the William Granger Greenway to Lake Ontario
-  Rouge Valley Trail
Linking the Rouge River Valley System to Lake Ontario
-  407 Hydro Corridor Trail
Future East-West Corridor connecting Vaughan and Markham
-  Pan Am Path
Legacy of Pan Am Games, linking Pickering to Brampton
-  Waterfront Trail
From East to West, continuous trail along Lake Ontario
-  Finch Hydro Corridor Trail
East-West Corridor Linking North York and Scarborough

Nokiidaa Trail and Ghost Canal



Nokiidaa Trail Spiral Mound Lookout



Nokiidaa Trail Ghost Canal Engineered Wetland

Nokiidaa Trail Parking Lot (Yonge & Mount Albert Sideroad) Project Complete



Paved entry and exit to the lot

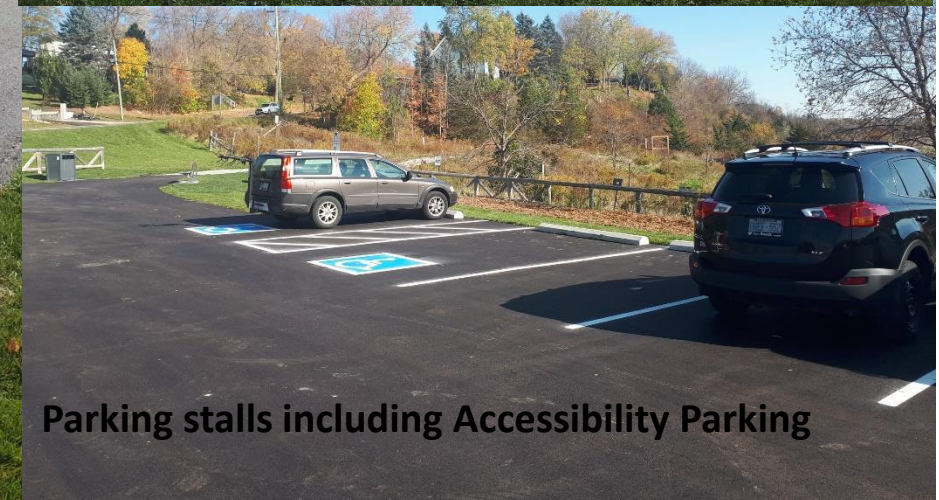


In partnership with



Lake Simcoe Region
conservation authority

LID Stormwater Management



Parking stalls including Accessibility Parking

Peggy's Wood Trail



Peggy's Wood Trail Connection and Stormwater Pond

Greenlane Multi-Use Path



Greenlane Multi-Use Path

North West Holland Landing Developments and Trail Connections



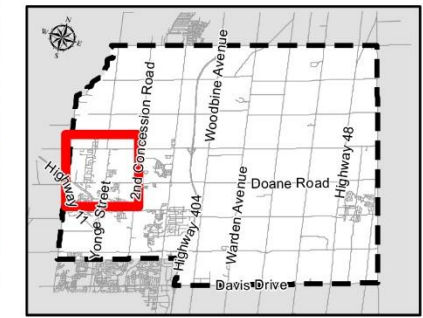
**Reconstructed Samuel Lount Park with
Trail connections from Existing
Community to New Development**



**Ridgeview Park Phase 1 and 2 with
Community Trail Connections**

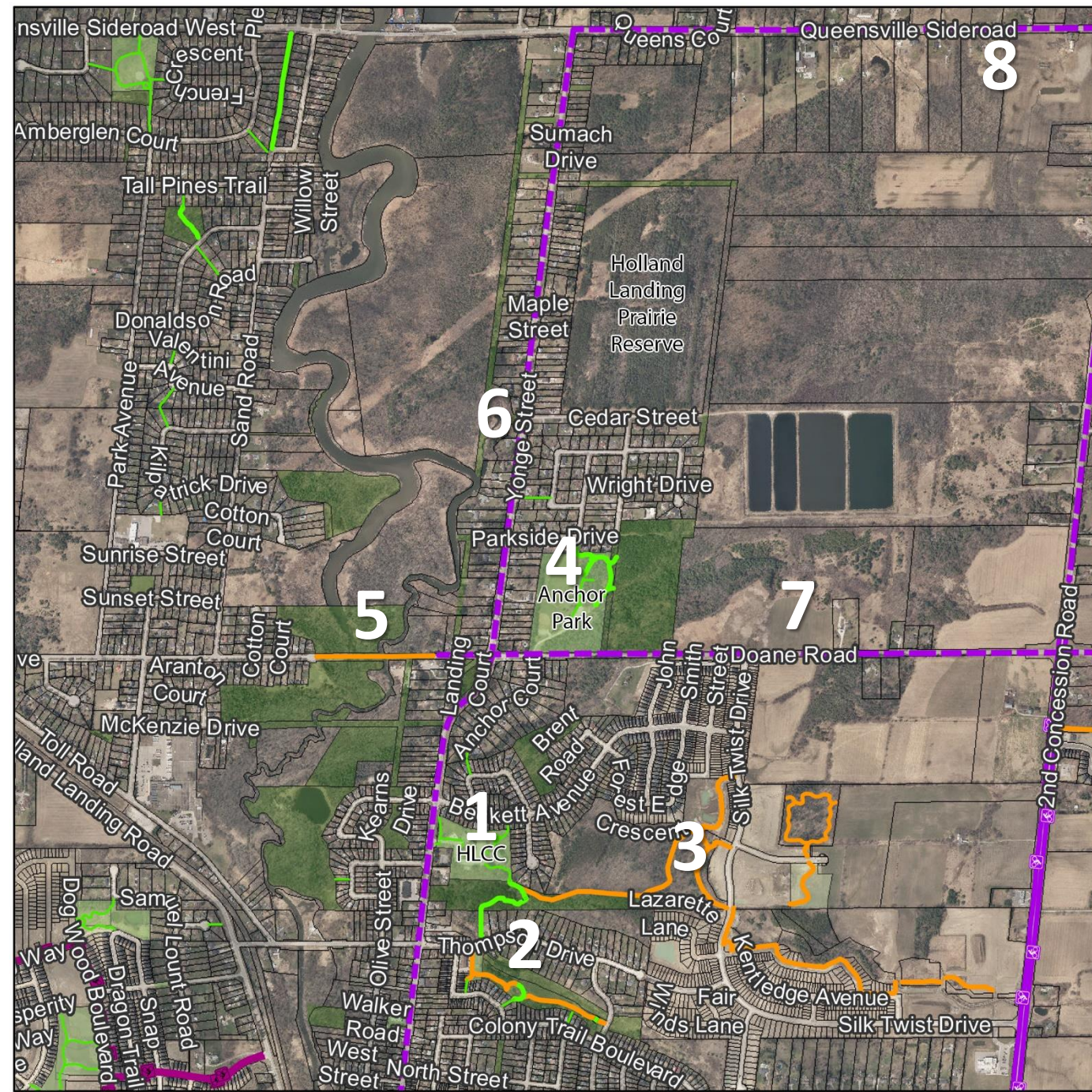


Holland Landing North



Legend

- Trail
- On-Street Route
- Trail
- Proposed On-Street Route
- Desire Line- On-Street Route
- Desire Line- Trail
- Parks
- Open Space



1 Holland Landing Community Centre

2 Emily Park and Simcoe Trail

3 Winged Foot & Valleybrook Development

4 Anchor Park

5 Oriole Drive

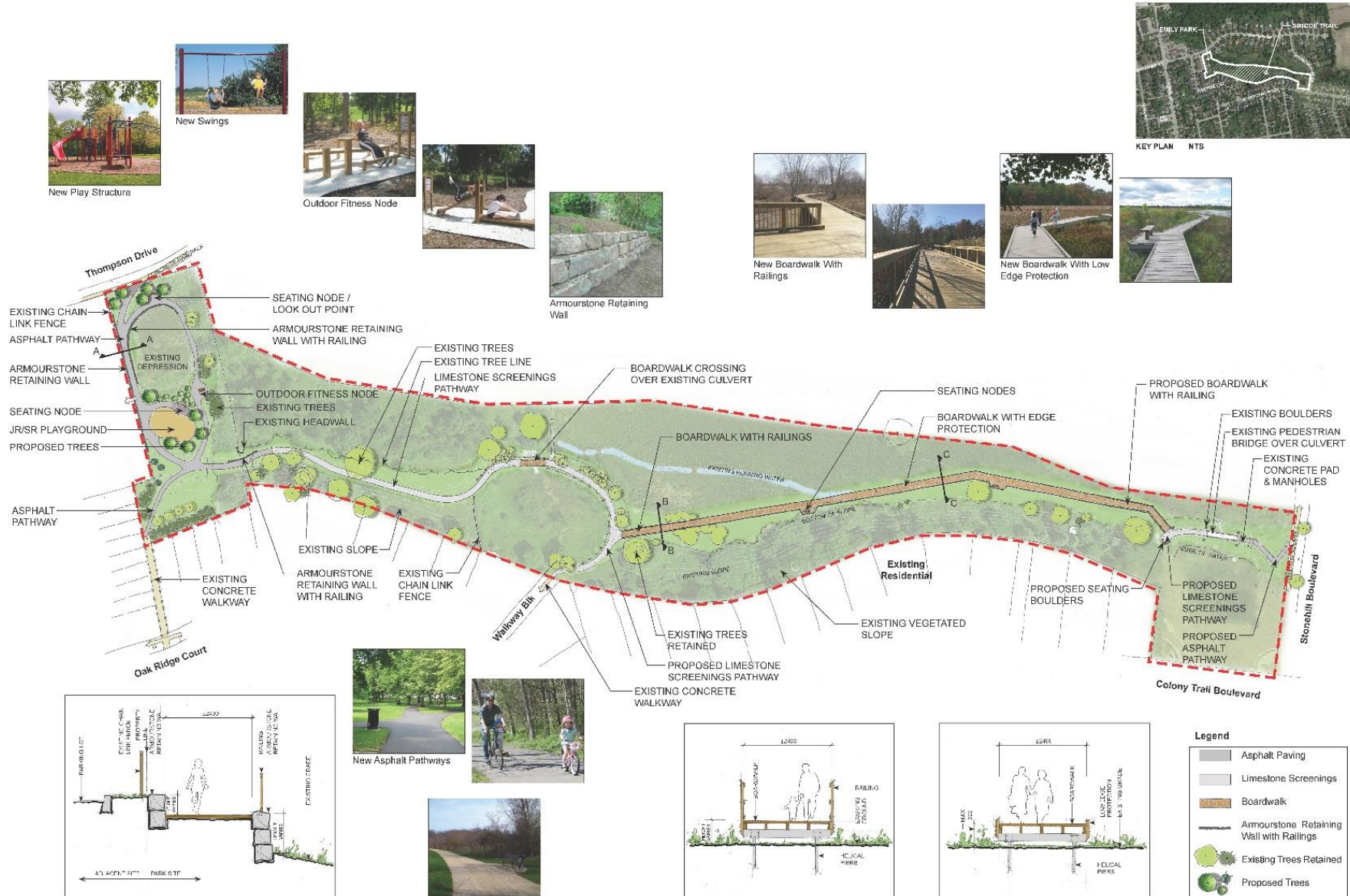
6, 7 & 8 Future Multi-use Yonge, Doane and Queensville

Wingedfoot & Valleybrook Bridge

(Bridge behind the Holland Landing Community Centre)
Anticipated Completion: Fall/Winter 2020

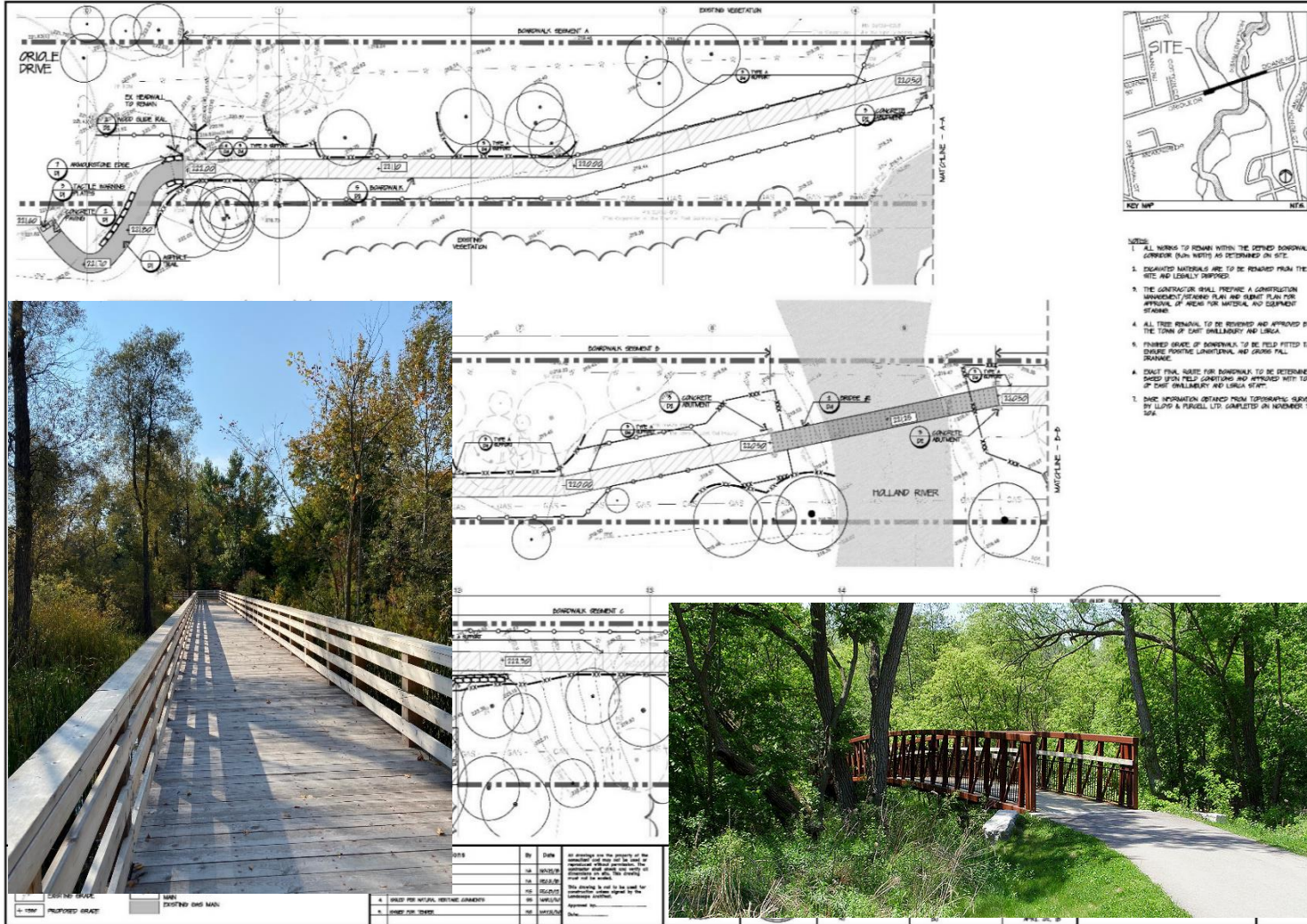


Emily Park and Simcoe Trail Project



Oriole Drive Bridge Trail and Boardwalk

Anticipated Completion: Q3 – Q4 2021



**FUNDING 33% of PROJECT
\$535,178**

- LSRCA Approval
- Bridge Install during Winter 2020/21

1 Sharon Creek Trail

2 Murrell On-Street Cycle Lanes

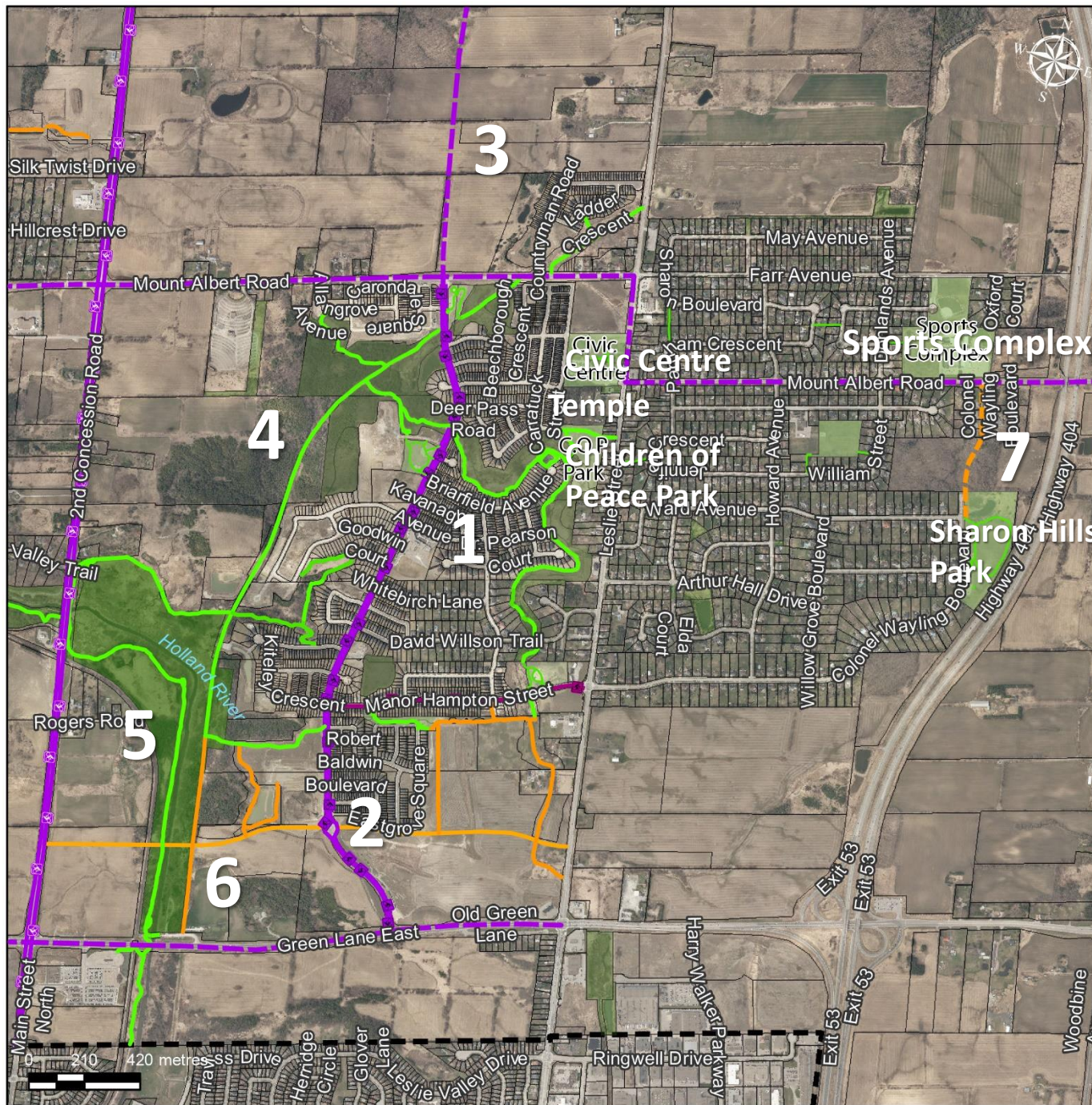
3 Future Alignment HALP John Candy Drive

4 Radial Line (Regional Trail)

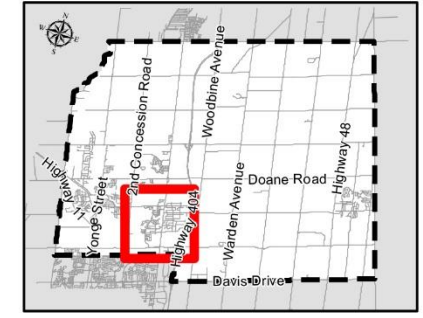
5 Nokiidaa Trail

6 Future Alignment Rogers Reservoir Greenlane GO Station

7 Future Connection Sharon Hills Park



Sharon



Legend

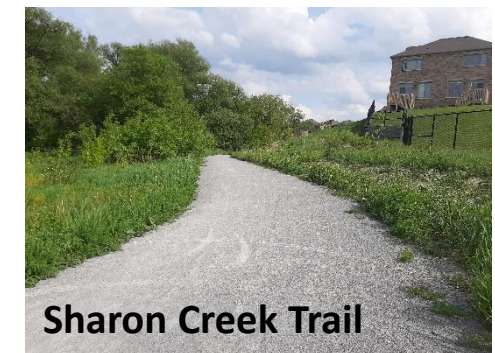
- Trail
- On-Street Route
- Trail
- Proposed On-Street Route
- - - Desire Line- On-Street Route
- - - Desire Line- Trail
- Parks
- Open Space



Sharon Creek Trail System

Substantial Completion for this project phase

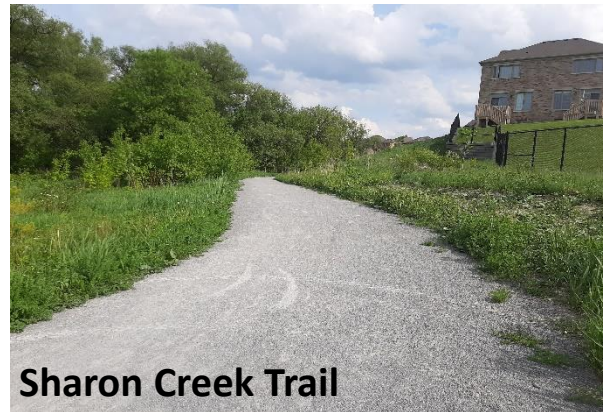
- Approximately 2 km of natural limestone trail and wood boardwalk



Sharon Creek Trail

Substantial Completion for this project phase

System Connects to Radial Line
Regional Trail, Children of Peace Park
and the Civic Centre Precinct



Children of Peace Park

Approaching Substantial Completion



Bridge Connection to Park from Sharon Creek Trail



Performance, Event and Gathering Space

Children of Peace Park

Approaching Substantial Completion



Park Entry at Beechwood Avenue



Multi-use Path from the park to the Civic Centre Precinct

Children of Peace Park

Approaching Substantial Completion



Park Entry from Leslie Street



Park Entry from Sharon Temple Gate

Connecting Parks and Trails



1 HALP Site

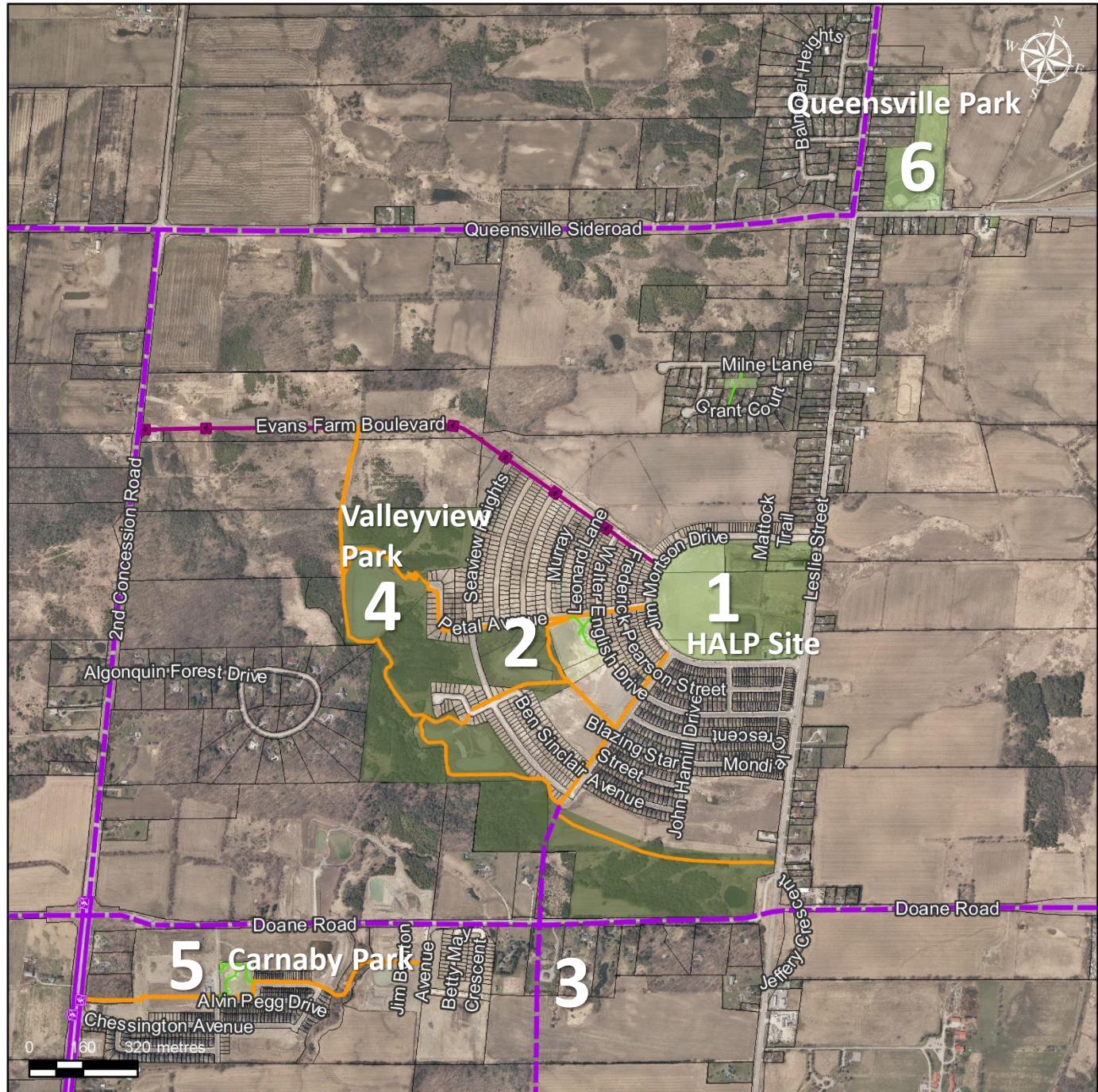
2 My Queensville Recreational and Multi-Use

3 Multi-use from Murrell to John Candy

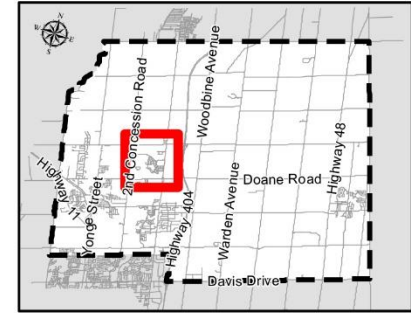
4 Valleyview Park Connection

5 Carnaby Park and Valmaderra Connection

6 Future Environmental and Outdoor Fitness Loop Queensville Park



Queensville



Legend

- Trail
- On-Street Route
- Trail
- Proposed On-Street Route
- - - Desire Line- On-Street Route
- - - Desire Line- Trail
- Parks
- Open Space



Future Queensville Trail Connections



**HALP Site and Connection to
MyQueensville Trail System**



**Valleyview Park and Connection to HALP
site and MyQueensville Trail System**

Future Queensville Trail Connections



Carnaby Park with Future Trailhead and Connections to Valmaderra Development



Queensville Park with Future Environmental and Outdoor Fitness Trail Loop

1 Vivian Creek

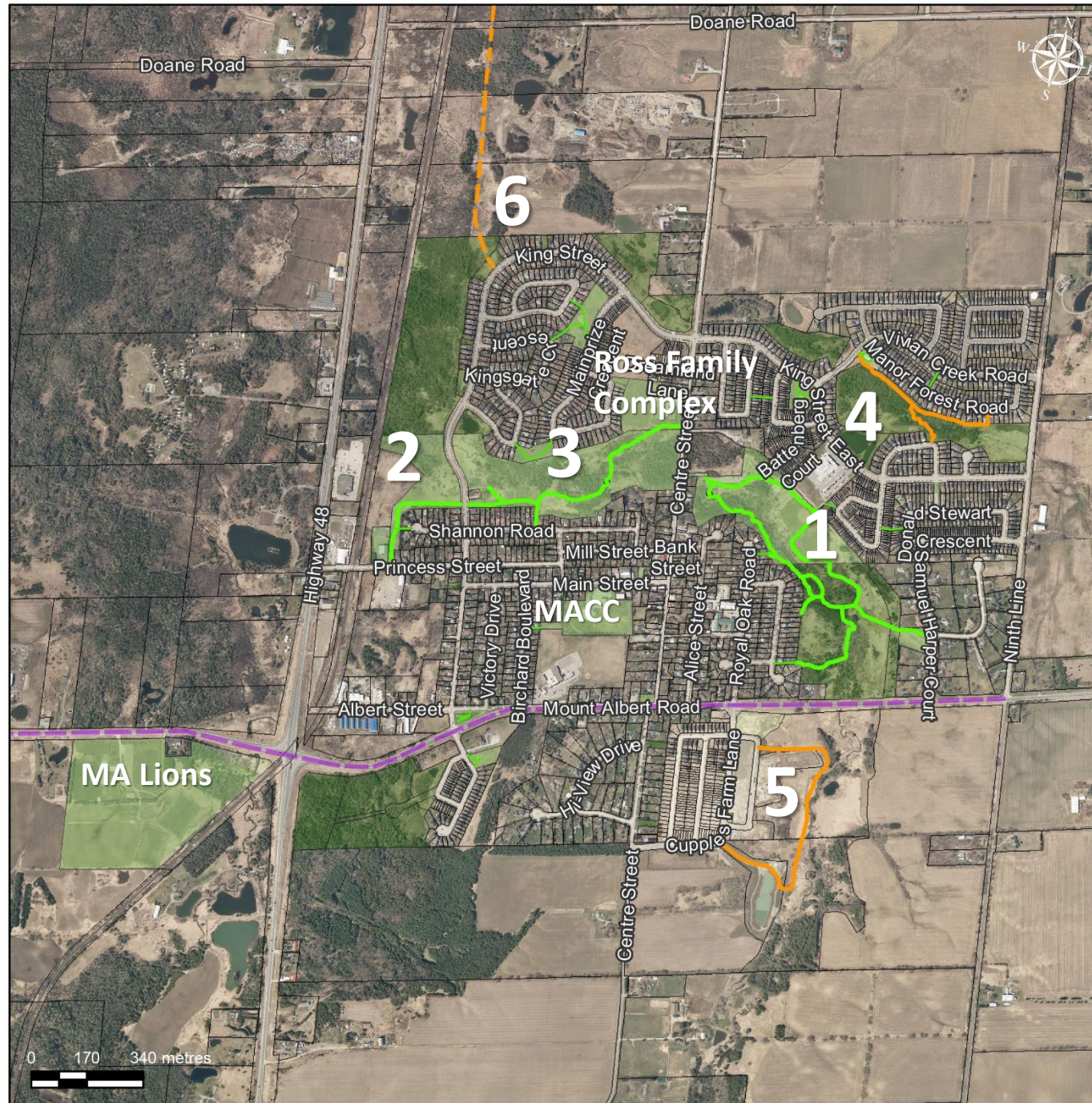
2 Princess Trail

3 Shannon Park Trail

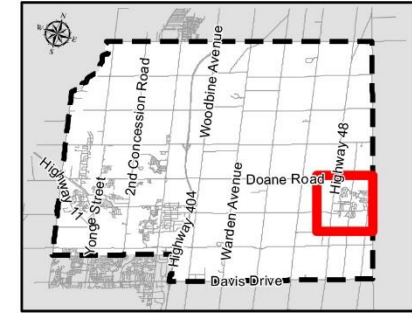
4 Manor Forest Trail

5 Cupples Farm Trail

6 Potential Zephyr Rail Trail



Mount Albert



Legend

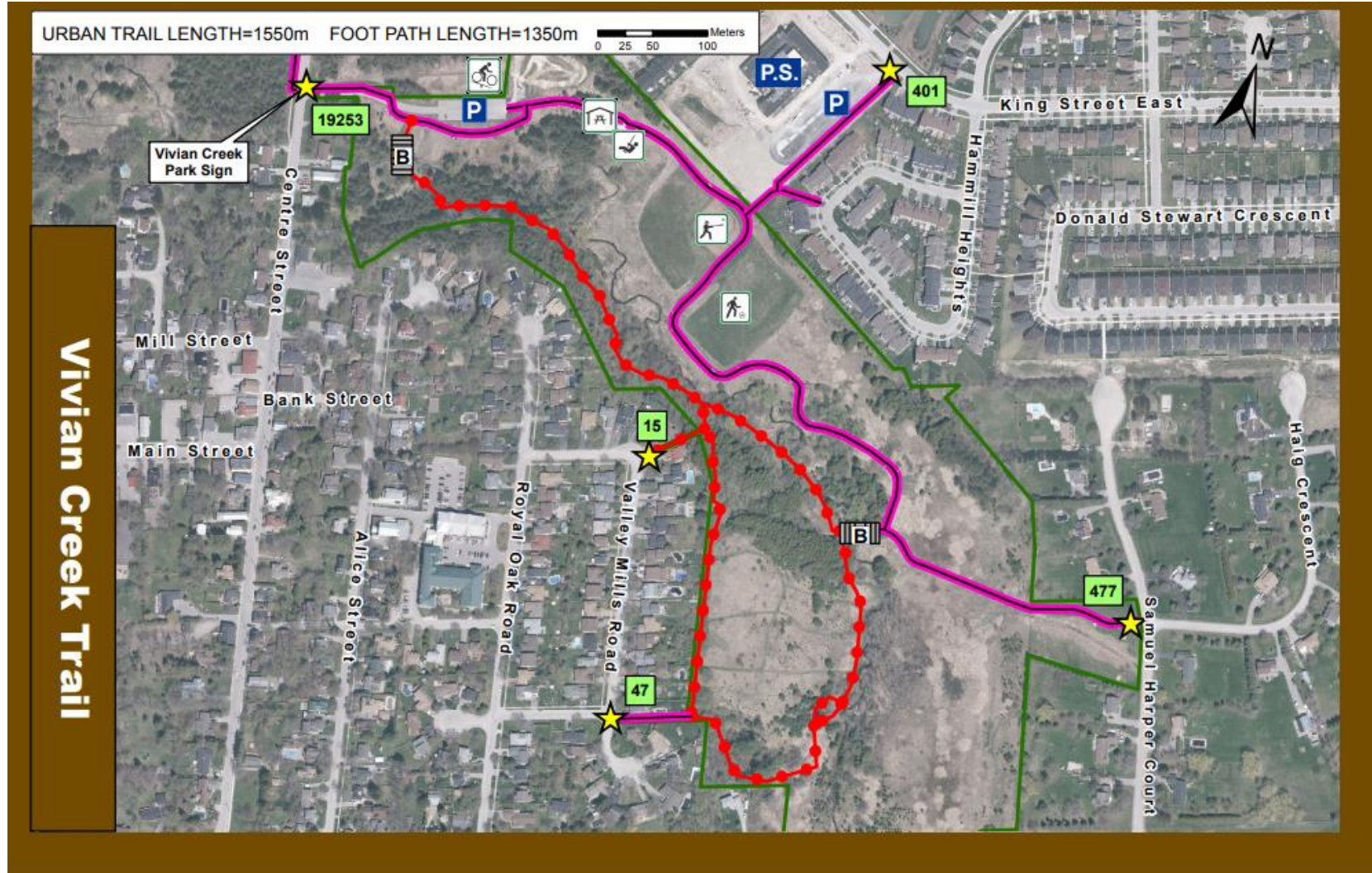
- Trail
- On-Street Route
- Trail
- Proposed On-Street Route
- Desire Line- On-Street Route
- Desire Line- Trail
- Parks
- Open Space



Printed:
December, 2020

Created By Town of East Gwillimbury, CPBC Branch
Data Sources: Roads, Parcel Boundaries, Municipal
Boundaries, Address, Regional Trails, 2019 Aerial
Photography, © The Regional Municipality of York
East Gwillimbury Trails, © Town of East Gwillimbury
ISRCA Trails, © ISRCA

Mount Albert Trail Connections



Vivian Creek Trail

Mount Albert Trail Connections

PRINCESS TRAIL

The Princess Trail begins at King Street just north of Shannon Street in Mount Albert and moves westerly through a meadow grass habitat, and then moves southward to Princess Street where it connects to urban sidewalks leading west past the fire station, to the commercial area at Highway 48. You can also access the trail via a walkway on Shannon Road.



PAGE 18



Princess Trail Connection

SHANNON PARK TRAIL

This Mount Albert trail provides a rich diversity of valley and natural woodland habitat experiences. The trail begins at King Street just north of Shannon Street and moves easterly through Shannon Park ending at the Ross Family Complex and Centre Street.

The limestone aggregate trail begins at King Street and passes through valleyland and wooded areas, eventually crossing over Vivian Creek on a small foot bridge. The trail continues to the Ross Family Complex, where one leg connects to the parking lot and the other connects to Centre Street. Trail visitors can travel a short distance south along Centre Street to the Vivian Creek Park entrance where they can connect to the Vivian Creek Trail system.

Once the visitor crosses to the north side of Vivian Creek on the urban trail they can turn west and hike up to Robert Hunter Crescent Park. They can loop back to the main trail behind the Ross Family Complex.



PAGE 20

Shannon Park Trail Connection

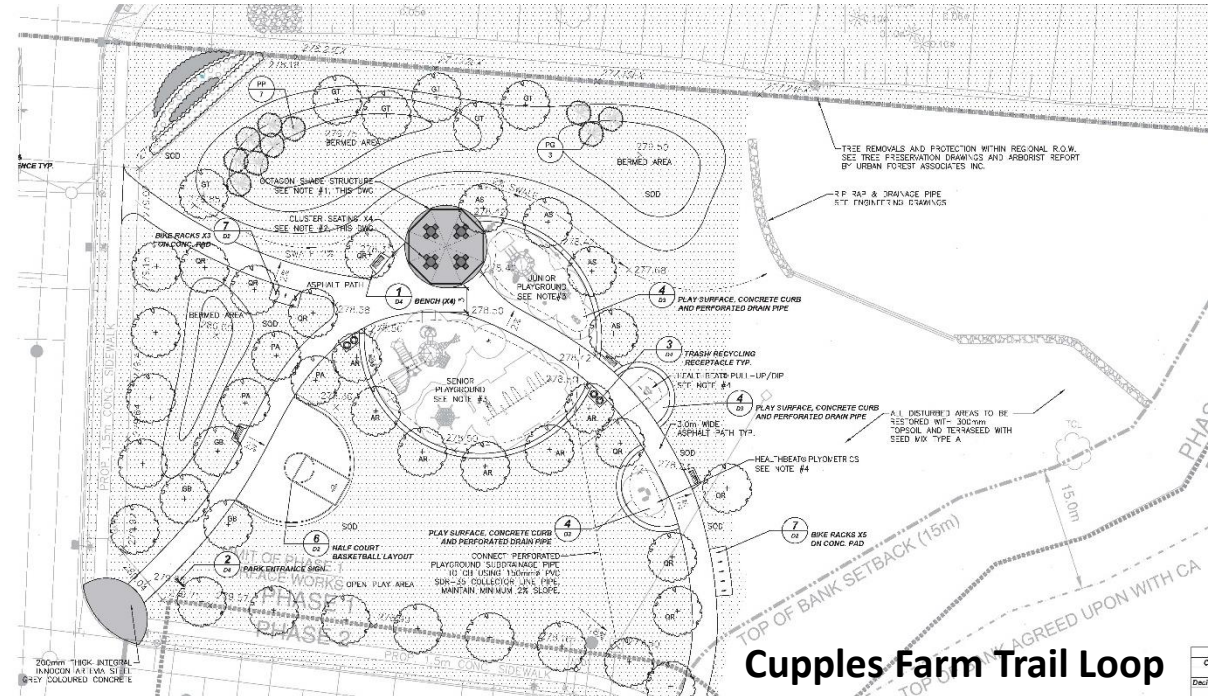


PAGE 21

Future Mount Albert Trail Connections



Manor Forest Trail Connection



Cupples Farm Trail Loop



Workshop Input

