



The following water and wastewater rates come into effect April 1, 2026:

2026	Water Rates	Wastewater Rates
Residential Usage	<35m <sup>3</sup> - \$2.57 >35m <sup>3</sup> - \$4.19	\$2.46
Non-Residential Usage	<35m <sup>3</sup> - \$2.57 >35m <sup>3</sup> - \$3.36	\$2.46

Meter Size	2026 Fixed Charge Per Service (water and wastewater)
5/8" and 3/4" meters	\$24.85 per month/per service
1"	\$62.13 per month/per service
1.5"	\$124.25 per month/per service
2"	\$198.80 per month/per service
3"	\$372.75 per month/per service
4"	\$621.25 per month/per service
6"	\$1,242.50 per month/per service
8"	\$1,988 per month/per service
10"	\$2,857.75 per month/per service

Access your tax and water bills online through the Town's online portal. Register to:

- View account balances
- View account transactions
- View your bill(s)
- Receive your tax and water bills via email
- Pay online via credit card\*



\* The credit card processing company will apply a service charge to online payments.

To set-up your account, visit [eastgwillimbury.ca/OnlinePortal](http://eastgwillimbury.ca/OnlinePortal) and use the 5-digit access code on your tax and water bills to log in.

## Pay Your Water Bill

### Payment Methods



Your Bank



Online



In-person



By Mail

19000 Leslie Street,  
Sharon, ON L0G 1V0

### Pre-authorized Payments

Monthly bill payments automatically withdrawn from account on due date. To apply, visit Customer Service or [eastgwillimbury.ca/WaterPAP](http://eastgwillimbury.ca/WaterPAP)

### Deferral Programs

The Town offers a deferral program for low income seniors and residents with a disability. For more information, visit [eastgwillimbury.ca/WaterBillingHelp](http://eastgwillimbury.ca/WaterBillingHelp)



## 2026 Water and Wastewater Rates

We're here to help!

If you have any questions about your water/wastewater bill, please contact the Town at:

📞 905-478-4282

📧 [waterbilling@eastgwillimbury.ca](mailto:waterbilling@eastgwillimbury.ca)

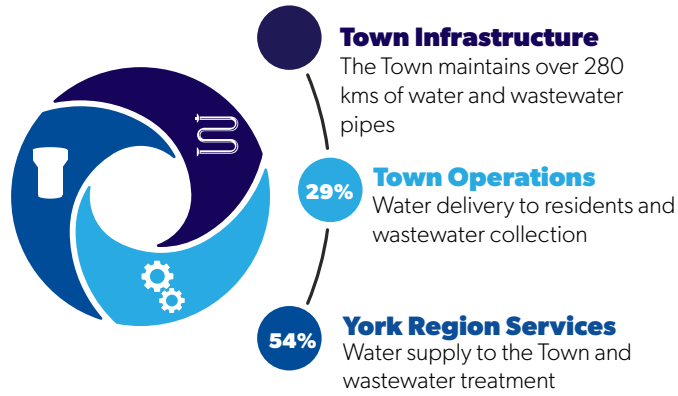
Sign up for e-billing!

# How is the budget allocated?

# Water Conservation

# Water Leak Detection

EG collects funds through water/wastewater rates to pay for:



## Save the blue to keep the green

In EG, water is supplied through York Region and shared across a fast-growing community. Region-wide data shows that residents use about 220 litres of water per person each day, with outdoor watering accounting for a large share during summer. Small daily choices add up – help conserve water by:

- Turning off the tap while brushing your teeth
- Taking short showers
- Watering gardens and lawns before 9 a.m. to ensure your lawn and plants absorb more moisture, following EG's Outdoor Water Use By-law and collecting rain water where possible

Using water wisely helps protect our local supply and keeps service reliable for everyone.

## Outdoor Water Use By-law

Homes with even numbered addresses may use water outdoors only on even numbered days of the month. Homes with odd numbered addresses may use water outdoors only on odd numbered days of the month. Water may only be used outdoors from 6 to 10 a.m. and 6 to 10 p.m.

## Make every drop count

When households use less water, communities also spend less on pumping, treating, and maintaining systems, helping keep utility costs lower. Using water wisely is an easy way to protect your budget and our shared resources, reduce strain on our system, and make a positive difference.

## Make every drop count.



Leaks are a major cause of wasted water and high water bills, even a small leak the size of a pinhole can result in major costs. Fixing leaks in faucets, showerheads, and running toilets can save significant amounts of water and money.

Leak stream*	Cubic Meters (m <sup>3</sup> )	Total (\$)
1/4"	4,475	+/- \$25,000
3/16"	2,521	+/- \$15,000
1/8"	1,115	+/- \$6,000
1/16"	280	+/- \$1,500

\*Over three months.

With our new water meters, you can monitor your usage to detect potential leaks early.

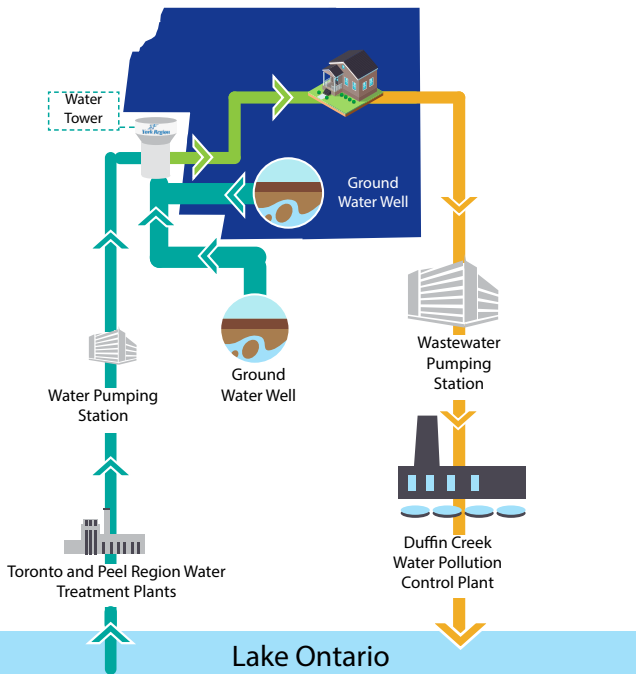


## How to read your water meter for leaks:

1. Turn off all water-using fixtures and appliances, including small ones like water softeners and water filters.
2. Locate the water meter, lift the cover and expose the solar panel to sunlight or shine a bright light to activate the display.
3. Record the water meter reading.
4. Wait 15 to 30 minutes and make sure no one uses water during this time.
5. Record the water meter reading again.

If the meter reading has gone up or you notice the faucet icon blinking, you may have a leak requiring further investigation. Contact a licensed plumber to have the leak repaired as soon as possible.

East Gwillimbury



This illustration shows how water gets to homes in EG and where wastewater is sent for treatment. This network of Town and Regional infrastructure makes up our water and wastewater system.