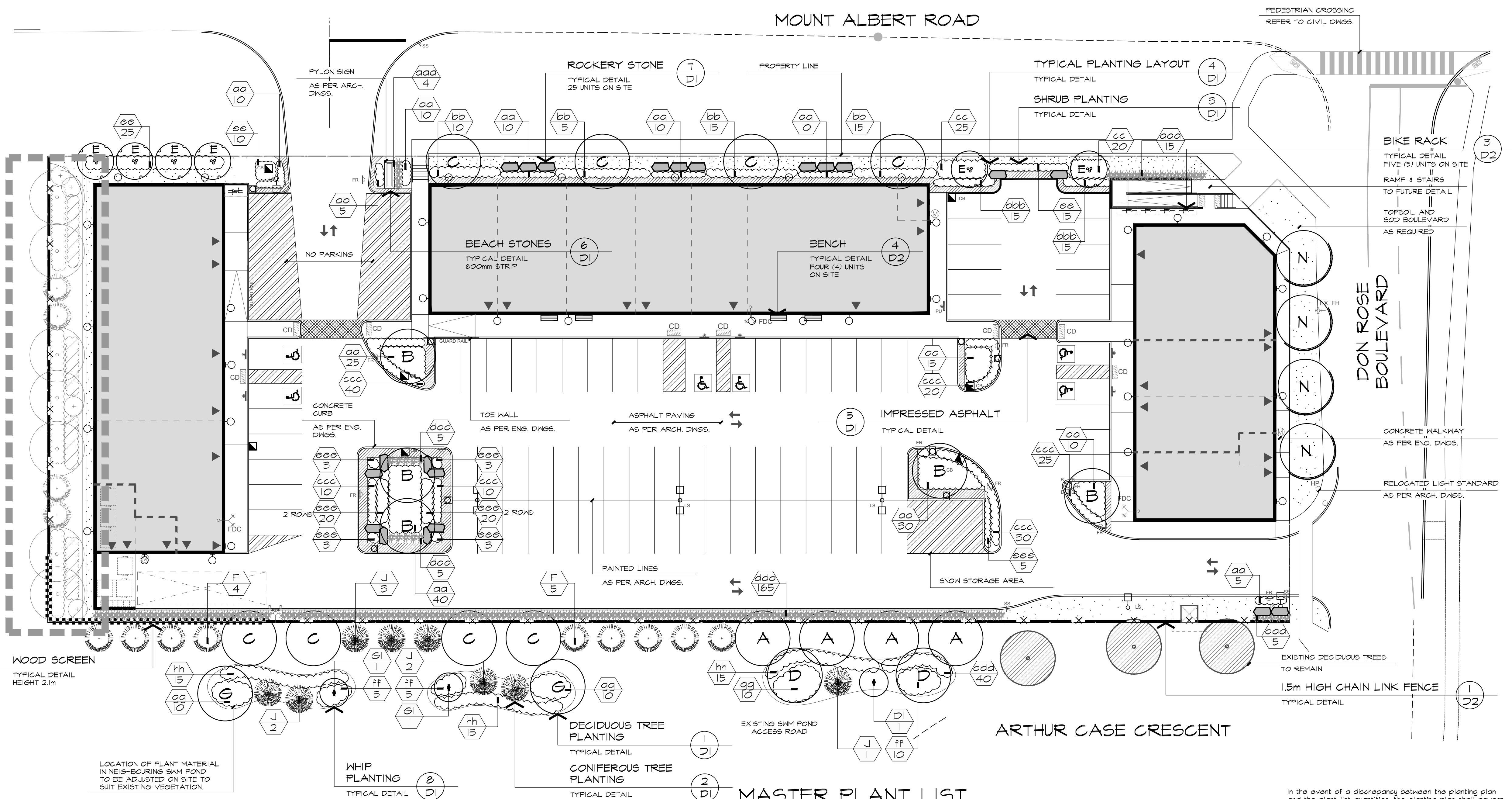


NOTE:
ALL BOULEVARD TURF THAT IS DAMAGED OR MISSING DUE TO CONSTRUCTION SHALL BE RESTORED TO ITS ORIGINAL OR BETTER CONDITION WITH MINIMUM 100mm TOPSOIL AND SOD AT THE OWNER'S EXPENSE



KEY MAP

LEGEND

- EXISTING TREES TO REMAIN
- DECIDUOUS TREES
- ORNAMENTAL MULTI-STEM TREES
- CONIFEROUS TREES
- SHRUB PLANTING
- GRASSES
- SODDED AREA
- IMPRESSED ASPHALT
- BEACH STONES
- CHAIN LINK FENCE
- WOOD FENCE
- LANDSCAPE ENLARGEMENT
- ROCKERY STONES
- PROPERTY LINE

BASE INFORMATION OBTAINED ELECTRONICALLY FROM A. BALDASSARRA ARCHITECT INC. (JOB NO. P-1319; TEL. 905-660-0722)

no.	date	version	by
9.	JUN 1 2022	RE-ISSUED FOR SPA	SO
8.	SEPT 11 2020	ISSUED FOR SPA	SO/LK
7.	MAR 13 2020	ISSUED FOR SUBMISSION	JD
6.	APRIL 23 2019	ISSUED FOR DISCUSSION / REVIEW	AC
5.	OCT 4 2018	RE-ISSUED FOR SUBMISSION	DN
4.	MAR 6 2017	RE-ISSUED FOR SUBMISSION	LK

All information hereon to be checked and verified at the site and any discrepancies must be reported to and clarified by the landscape architect before commencing work. All drawings, specifications, details, digital information, etc., prepared by the landscape architect are instruments of service and as such are his property and must be returned at his request.

MASTER PLANT LIST

In the event of a discrepancy between the planting plan and the plant list quantities, the planting plan shall govern.

KEY	QUANTITY	BOTANICAL NAME	COMMON NAME	NATIVE	WATER EFFICIENT	GALIPER	HEIGHT	SPREAD	ROOT	REMARKS	SPACING
DECIDUOUS TREES											
A	4	GLEDITSIA TRIACANTHOS 'SUNBURST'	SUNBURST HONEY-LOCUST	✓	✓	60mm	3500mm	1500mm	S.B.	EQUAL FORM	----
B	5	GINKGO BILOBA	MAIDENHAIR TREE	✓	✓	60mm	3500mm	1500mm	S.B.	EQUAL FORM	----
C	11	QUERCUS RUBRA	RED OAK	✓	✓	60mm	3500mm	1500mm	S.B.	EQUAL FORM	----
D	1	ACER RUBRUM	RED MAPLE	✓	✓	50mm	3000mm	1200mm	S.B.	EQUAL FORM	----
DI	1	ACER RUBRUM	RED MAPLE	✓	---	---	2500mm	---	POTTED	EQUAL FORM	----
E	2	POPULUS BALSAMIFERA	BALSAM POPLAR	✓	---	50mm	3000mm	1200mm	S.B.	EQUAL FORM	----
GI	2	POPULUS BALSAMIFERA	BALSAM POPLAR	✓	---	---	2500mm	---	POTTED	EQUAL FORM	----
L	4	ACER SACCHARUM	SUGAR MAPLE	✓	✓	50mm	3000mm	1200mm	S.B.	EQUAL FORM	----
N	4	PYRUS CALLERYANA CHANTICLEER 'GLEN FORM'	CHANTICLEER PEAR	---	---	50mm	3000mm	1200mm	S.B.	EQUAL FORM	----
ORNAMENTAL TREE											
E	6	AMELANCHIER CANADENSIS (CLUMP)	DOWNY SERVICEBERRY	✓	✓	3 X 50mm	2500mm	1200mm	S.B.	MULTI-STEM	----
CONIFEROUS TREES											
F	1	PINUS STROBUS	EASTERN WHITE PINE	✓	✓	---	2500mm	---	S.B.	SPECIMEN	----
J	6	PICEA GLAUCA	WHITE SPRUCE	✓	✓	---	2500mm	1200mm	S.B.	SPECIMEN	----
M	4	PINUS STROBUS	EASTERN WHITE PINE	✓	✓	---	2500mm	1200mm	S.B.	SPECIMEN	----
BROADLEAF EVERGREENS											
aa	180	ELONIA FORTUNEI 'EMERALD N' GOLD'	EMERALD N' GOLD ELONYMUS	---	---	---	---	500mm	POTTED	MIN. 2 YRS. GTH.	600mm
DECIDUOUS SHRUBS											
bb	55	CORNUS SERICEA 'FARROW'	ARCTIC FIRE DOGWOOD	✓	---	---	600mm	---	POTTED	MIN. 10 STEMS	750mm
cc	45	RHUS AROMATICA 'GRO LOW'	GRO LOW FRAGRANT SUMAC	✓	---	---	600mm	---	POTTED	MIN. 10 STEMS	650mm
ee	50	PHYSCARPUS OPULIFOLIUS 'DARTS GOLD'	DARTS GOLD NINEBARK	✓	---	---	600mm	---	POTTED	MIN. 10 STEMS	650mm
ff	20	CORNUS SERICEA	RED OSIER DOGWOOD	✓	---	---	500mm	---	POTTED	MIN. 10 STEMS	1000mm
gg	30	DIERVILLA LONGICERA	BUSH HONEYSUCKLE	✓	---	---	400mm	---	POTTED	MIN. 10 STEMS	1000mm
hh	45	VIBURNUM ACERIFOLIUM	MAPLELEAF VIBURNUM	✓	---	---	---	---	1 gal. POT	MIN. 10 STEMS	1000mm
qq	35	CORNUS RACEMOSA	GRAY DOGWOOD	✓	---	---	500mm	---	3 gal. POT	MIN. 10 STEMS	800mm
rr	30	CORNUS SERICEA	RED OSIER DOGWOOD	✓	---	---	500mm	---	3 gal. POT	MIN. 10 STEMS	800mm
mm	4	ELAEAGNUS COMMUNATA	SILVERBERRY	---	---	---	600mm	---	2 gal. POT	MIN. 10 STEMS	800mm
nn	45	SAMBUCUS CANADENSIS	AMERICAN ELDERBERRY	✓	---	---	500mm	---	3 gal. POT	MIN. 10 STEMS	800mm
pp	50	SYMPHORICARPOS ALBUS	SNOWBERRY	✓	---	---	500mm	---	3 gal. POT	MIN. 10 STEMS	800mm
PERENNIALS, GROUND COVERS AND GRASSES											
aaa	24	PANICUM VIRGATUM 'HEAVY METAL'	HEAVY METAL SWITCH GRASS	✓	✓	---	---	---	1 gal. POT	---	500mm
bbb	30	CAREX ELATA 'AUREA'	BOXES GOLDEN SAGE	✓	---	---	---	---	1 gal. POT	---	500mm
ccc	155	HEMEROCALLIS 'STELLA D'ORO'	STELLA D'ORO DAYLILY	---	---	---	---	---	1 gal. POT	---	400mm
ddd	208	CALLAMAGROSTIS ACUTIFLORA (KARL FOERSTER)	KARL FOERSTER FEATHER REED GRASS	---	---	---	---	---	1 gal. POT	---	500mm
eee	51	SEDUM SPECTABILE 'AUTUMN JOY'	AUTUMN JOY STONECROP	---	✓	---	---	---	1 gal. POT	---	500mm

SPECIFICATIONS

GENERAL

THESE SPECIFICATIONS ARE TO BE READ IN CONJUNCTION WITH THE GENERAL CONDITIONS OF THE CONTRACT AS PREPARED BY AND AVAILABLE AT THE OFFICE OF ALEXANDER BUDREVICS & ASSOCIATES LTD.

PRIOR TO COMMENCING WORK, THE CONTRACTOR SHALL:

1. FAMILIARIZE HIMSELF WITH THE PLANS, DETAILS AND SPECIFICATIONS OF THIS PROJECT.
2. VISIT THE SITE TO ASCERTAIN AND TAKE ACCOUNT OF EXISTING CONDITIONS AND ANY DEVIATIONS FROM THE PLANS IN WORK BY OTHERS, AND
3. FINALIZE ALL DESIGN ALTERNATIVES IN CONSULTATION WITH THE LANDSCAPE ARCHITECT.

PRIOR TO EXCAVATING THE CONTRACTOR SHALL VERIFY THE LOCATION OF ALL UNDERGROUND UTILITIES. IN THE EVENT OF A CONFLICT BETWEEN A PROPOSED TREE LOCATION AND AN UNDERGROUND SERVICE, THE EXACT LOCATION OF THE TREE SHALL BE DETERMINED ON SITE BY THE LANDSCAPE ARCHITECT.

THE CONTRACTOR SHALL AT HIS OWN EXPENSE REPAIR ANY DAMAGE TO EXISTING UTILITIES, STRUCTURES, FACILITIES, ETC. DONE IN THE PERFORMANCE OF HIS WORK.

ALL SITE WORK SHALL CONFORM TO THE CANADIAN NATIONAL MASTER CONSTRUCTION SPECIFICATIONS CANADA.

TE: (416) 771-2985, Fax: (416) 771-2918, Email: info@abudrevics.com

IT IS THE RESPONSIBILITY OF THE CONTRACTOR TO BE THOROUGHLY FAMILIAR WITH THESE SPECIFICATIONS AND THEIR IMPLICATIONS FOR THIS PROJECT.

SOFT LANDSCAPING

PLANT MATERIALS

ALL PLANTS SHALL BE INSTALLED TRUE TO SPECIFIED NAMES, SIZES, GRADES, ETC. AND SHALL CONFORM TO THE STANDARDS OF THE CANADIAN NURSERY TRADES ASSOCIATION.

ALL PLANTS SHALL BE NURSERY GROWN.

IN THE EVENT OF A DISCREPANCY IN PLANT QUANTITY BETWEEN THE PLANTING PLAN AND THE PLANT LIST, THE PLANTING PLAN SHALL GOVERN.

THE CONTRACTOR SHALL MAKE PLANTS AVAILABLE FOR INSPECTION BY THE LANDSCAPE ARCHITECT PRIOR TO INSTALLATION. MATERIAL NOT CONFORMING TO THE SPECIFICATIONS SHALL BE REPLACED AT THE EXPENSE OF THE CONTRACTOR.

PLANT SUBSTITUTIONS MUST BE APPROVED IN WRITING BY THE OWNER OR THE LANDSCAPE ARCHITECT PRIOR TO DELIVERY OF THE MATERIAL ON SITE.

THE LANDSCAPE ARCHITECT MAY, UPON COMPLETION OF THE WORK AND NOTWITHSTANDING PRIOR APPROVAL, AT SOURCE, SELECT PLANT MATERIAL NOT CONFORMING TO THE SPECIFICATIONS.

BED PREPARATION

THE CONTRACTOR SHALL BACKFILL FREE PITS AND PLANTING BEDS TO SPECIFIED DEPTHS WITH EITHER IMPRESSED TOPSOIL (V.L.Z. "TRIPLE-K") OR A MIXTURE COMPRISED OF:

- 1 PART SANDY LOAM
- 1 PART FINELY PULVERIZED CANADIAN PEAT MOSS
- 1 PART WET SODDED TURF MATS WITH "HORIZON" 30-10-5 TABLETS FOR APPROVED EQUAL ADDED ACCORDING TO THE MANUFACTURER'S SPECIFICATIONS.

THE CONTRACTOR SHALL CONSTRUCT FREE PITS AND SHRUB BEDS WITH SOIL SAVERS, MULCH AND SUBSURFACE DRAINAGE AS DETAILED.

THE CONTRACTOR SHALL CONSTRUCT SHRUB BEDS IN CONTINUOUS FORMS. THE SHAPE OF WHICH SHALL BE APPROVED BY THE LANDSCAPE ARCHITECT AND/OR OWNER. ON SLOPES, SHRUB BEDS SHALL BE FASHIONED TO ALLOW FOR PROPER DRAINAGE.

TOPSOIL & FINE GRADING

THE CONTRACTOR SHALL PLACE 300mm OF RICH TOPSOIL ON APPROVED SUBGRADE. TOPSOIL SHALL BE IMPORTED WHERE REQUIRED. 10-14 FERTILIZER SHALL BE APPLIED ACCORDING TO THE MANUFACTURER'S INSTRUCTIONS AT A RATE OF 125 kg/ha/ha FOR UNGRADED AREAS. THE NATURE AND RATE OF APPLICATION SHALL BE ADJUSTED FOR SEEDED AREAS.

MINOR GRADE DEFICIENCIES AND IRREGULARITIES SHALL BE ELIMINATED PRIOR TO SODDING.

SODDING

THE CONTRACTOR SHALL SOD ALL AREAS SO INDICATED ON THE DRAWINGS. SOD SHALL BE FRESHLY CUT (NO) GRADE NURSERY-GROWN TURF 50-75mm THICK.

SOD FOR SUNNY, EXPOSED AREAS SHALL BE 50% KENTUCKY BLUEGRASS AND 50% HERON BLUEGRASS. SOD FOR SHADED AREAS SHALL BE 50% NUGGET KENTUCKY BLUEGRASS AND 50% GREENING RED FESCUE.

SOD SHALL BE PLACED ON PREPARED TOPSOIL, WITH JOINTS STAGGERED AND SECTIONS ADJUSTED TIGHTLY. IMMEDIATELY AFTER LAYING, IRRIGATION SUFFICIENT TO ENSURE MOISTURE PENETRATION TO A DEPTH OF 100mm SHALL BE APPLIED.

SOD SHALL BE MACHINE ROLLED TO ENSURE UNIFORM CONTACT WITH TOPSOIL. SOD ON ALL SLOPES SHALL BE PEGGED WHERE REQUIRED.

HARD LANDSCAPING

POURED-IN-PLACE CONCRETE WORK

THE CONTRACTOR SHALL OBTAIN WRITTEN APPROVAL OF FORMWORK PRIOR TO POURING CONCRETE. ALL CONCRETE, STEEL REINFORCING, AND FORMWORK SHALL BE AS DETAILED AND SPECIFIED ON THE DRAWINGS.

THE STYLE, COLOUR, AND FINISH OF CONCRETE ELEMENTS SHALL BE APPROVED BY THE OWNER AND/OR LANDSCAPE ARCHITECT PRIOR TO THE COMMENCEMENT OF CONCRETE WORK.

ALL STRUCTURAL CONCRETE WORK SHALL CONFORM TO LOCAL BUILDING CODES AND REGULATIONS.

BRICKWORK, STONEWORK & CONCRETE UNIT PAVING

WHERE APPLICABLE, THE CONTRACTOR SHALL OBTAIN WRITTEN APPROVAL FROM THE LANDSCAPE ARCHITECT OF ALL STRUCTURAL CONCRETE WORK BEFORE COMMENCING BRICKWORK, STONEWORK OR PAVING WORK.

ALL BRICKWORK, STONEWORK, AND CONCRETE UNIT PAVING SHALL BE AS DETAILED AND SPECIFIED ON THE DRAWINGS, UNLESS THE LANDSCAPE ARCHITECT AND/OR OWNER APPROVE SUBSTITUTIONS IN WRITING.

PRIOR TO STARTING THIS PORTION OF WORK, THE CONTRACTOR SHALL SUBMIT SAMPLES OF ALL PROPOSED BRICKWORK, STONEWORK, AND CONCRETE UNIT PAVERS FOR APPROVAL BY THE LANDSCAPE ARCHITECT AND/OR THE OWNER WITH RESPECT TO STYLE, COLOUR, AND FINISH. THE CONTRACTOR MAY ALSO BE ASKED TO SUBMIT SAMPLES OF ALTERNATIVES TO THE MATERIALS SPECIFIED ON THE DRAWINGS.

ALL BRICKWORK, STONEWORK, AND CONCRETE UNIT PAVING SHALL CONFORM TO LOCAL BUILDING CODES AND OTHER MUNICIPAL REQUIREMENTS.

METALWORK

PRIOR TO ORDERING MATERIAL FOR THIS PORTION OF WORK, THE CONTRACTOR SHALL SUBMIT SAMPLES OF ALL PROPOSED METALWORK FOR THE APPROVAL OF THE LANDSCAPE ARCHITECT AND/OR THE OWNER WITH RESPECT TO STYLE, COLOUR, AND FINISH. THE CONTRACTOR MAY ALSO BE ASKED TO SUBMIT SAMPLES OF ALTERNATIVES TO THE MATERIALS SPECIFIED ON THE DRAWINGS.

MAINTENANCE

THE CONTRACTOR SHALL MAINTAIN ALL LANDSCAPED AREAS FOR A PERIOD OF FOUR (4) GROWING MONTHS FROM THE DATE OF SUBSTANTIAL COMPLETION.

MAINTENANCE SHALL INCLUDE:

- PROPER IRRIGATION TO ENSURE OPTIMUM GROWTH OF TREES, SHRUBS, AND SOD.
- GRASS MOWING TO MAINTAIN AN APPROXIMATE HEIGHT OF 50mm.
- THE CULTIVATION AND REPAIRING OF TREE PITS AND PLANTING BEDS.
- INSECT AND DISEASE CONTROL.

AT THE END OF THE SPECIFIED MAINTENANCE PERIOD, PROVIDED ALL PLANT MATERIAL IS ALIVE AND IN A HEALTHY GROWING CONDITION, THE OWNER WILL ASSUME THE RESPONSIBILITY OF MAINTAINING THE LANDSCAPE WORK.

PERFORMANCE ACCEPTANCE (SUBSTANTIAL COMPLETION)

WRITTEN NOTICE OF PERFORMANCE ACCEPTANCE BY THE LANDSCAPE ARCHITECT FOR SUBSTANTIAL COMPLETION OF THE PROJECT LANDSCAPE WORKS SHALL MARK THE START OF THE GUARANTEE PERIOD.

SHOULD LOCAL LAW REQUIRE MUNICIPAL ACCEPTANCE, THE LANDSCAPE ARCHITECT WILL SUBMIT THE SUBSTANTIAL COMPLETION CERTIFICATE TO THE MUNICIPALITY SO THAT THEY MAY PROCEED TO INSPECT THE WORK, ISSUE THEIR PERFORMANCE ACCEPTANCE CERTIFICATE, AND REDUCE THE AMOUNT OF SECURITY.

GUARANTEE

ALL PLANT MATERIAL SHALL BE GUARANTEED FOR ONE (1) YEAR FROM THE DATE ON THE PERFORMANCE ACCEPTANCE CERTIFICATE ISSUED BY THE LANDSCAPE ARCHITECT. PLANTS THAT EXPIRE OR OTHERWISE FAIL TO THRIVE DURING THE GUARANTEE PERIOD SHALL BE REPLACED AT THE EXPENSE OF THE CONTRACTOR.

UNUSUALLY ALL OTHER LANDSCAPE WORK PERFORMED UNDER THIS CONTRACT SHALL BE FULLY GUARANTEED FOR ONE (1) YEAR FROM THE DATE OF PERFORMANCE ACCEPTANCE BY THE LANDSCAPE ARCHITECT.

FINAL ACCEPTANCE

ALL WORK SHALL BE INSPECTED AT THE END OF THE GUARANTEE PERIOD BY THE LANDSCAPE ARCHITECT. ANY DEFICIENCIES SHALL BE IDENTIFIED BY THE LANDSCAPE ARCHITECT AND THE OWNER. THE LANDSCAPE ARCHITECT WILL THEN ISSUE A FINAL ACCEPTANCE CERTIFICATE.

SHOULD LOCAL LAW REQUIRE MUNICIPAL ACCEPTANCE, THE LANDSCAPE ARCHITECT WILL SUBMIT THE FINAL ACCEPTANCE CERTIFICATE TO THE MUNICIPALITY SO THAT THEY MAY PROCEED TO INSPECT THE WORK, GIVE FINAL APPROVAL, AND RELEASE ALL OUTSTANDING LANDSCAPE SECURITIES.

LANDSCAPE PLAN

date	NOVEMBER 03, 2015	drawn	JD
scale*	1:250	file	3017 L1 R9-220601
direction			
project no.	3017		
sheet no.	L-1		

ALEXANDER BUDREVICS & ASSOCIATES
LANDSCAPE ARCHITECTS

885 Don Mills Road, Second Tower, Suite 212
Toronto, Ontario, Canada, M3C 1W3

416-444-5201
416-444-5208

www.budrevics.com

project York Region File Number: SP.17.E.0012

MOUNT ALBERT ROAD COMMERCIAL RETAIL UNITS

2 DON ROSE BOULEVARD
TOWN OF EAST GWILLIMBURY, ON

BALDASSARRA ARCHITECTS INC.

drawing

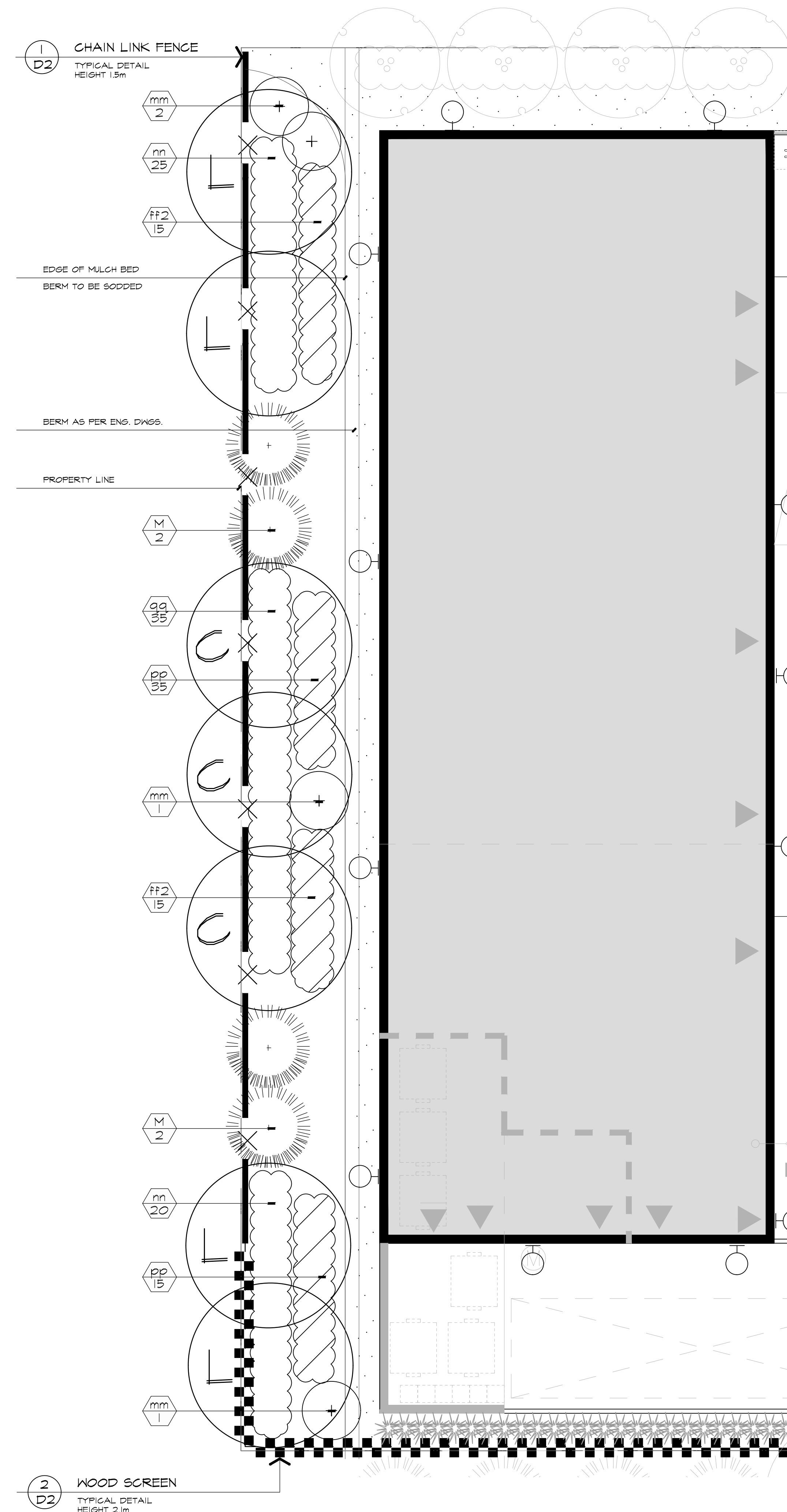
MEMBER

*NOTED SCALE IS APPLICABLE ONLY WHEN PRINTED ON ARCH D (24"x36") SIZE SHEET

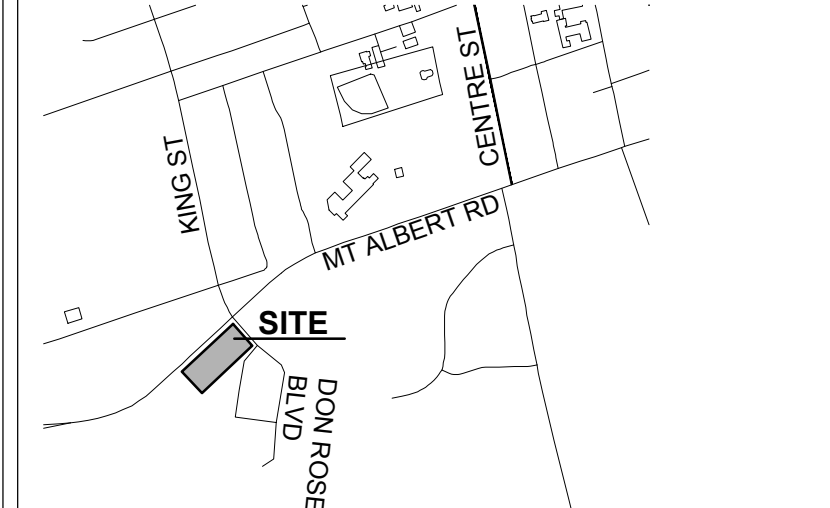
REFERENCE PLANT LIST

KEY	COMMON NAME
DECIDUOUS TREES	
A	SUNBURST HONEY-LOCUST
B	MAIDENHAIR TREE
C	RED OAK
D	RED MAPLE
DI	RED MAPLE
G	BALSAM POPLAR
GI	BALSAM POPLAR
L	SUGAR MAPLE
N	CHANTICLEER PEAR
ORNAMENTAL TREE	
E	DOWNY SERVICEBERRY
CONIFEROUS TREES	
F	EASTERN WHITE PINE
J	WHITE SPRUCE
M	EASTERN WHITE PINE
BROADLEAF EVERGREENS	
aa	EMERALD N' GOLD EUONYMUS
DECIDUOUS SHRUBS	
bb	ARCTIC FIRE DOGWOOD
cc	ORO LON FRAGRANT SUMAC
ee	DARTS GOLD NINEBARK
ff	RED OSIER DOGWOOD
gg	BUSH HONEYBUCKLE
hh	MAPLELEAF VIBURNUM
jj	PAGODA DOGWOOD
qq	GRAY DOGWOOD
ff2	RED OSIER DOGWOOD
mm	SILVERBERRY
nn	AMERICAN ELDERBERRY
pp	SNOKBERRY
PERENNIALS AND GRASSES	
ooo	HEAVY METAL SWITCH GRASS
bbb	BOXLES GOLDEN SAGE
ccc	STELLA D'ORO DAYLILY
ddd	KARL FOERSTER FEATHER REED GRASS
eee	AUTUMN JOY STONECROP

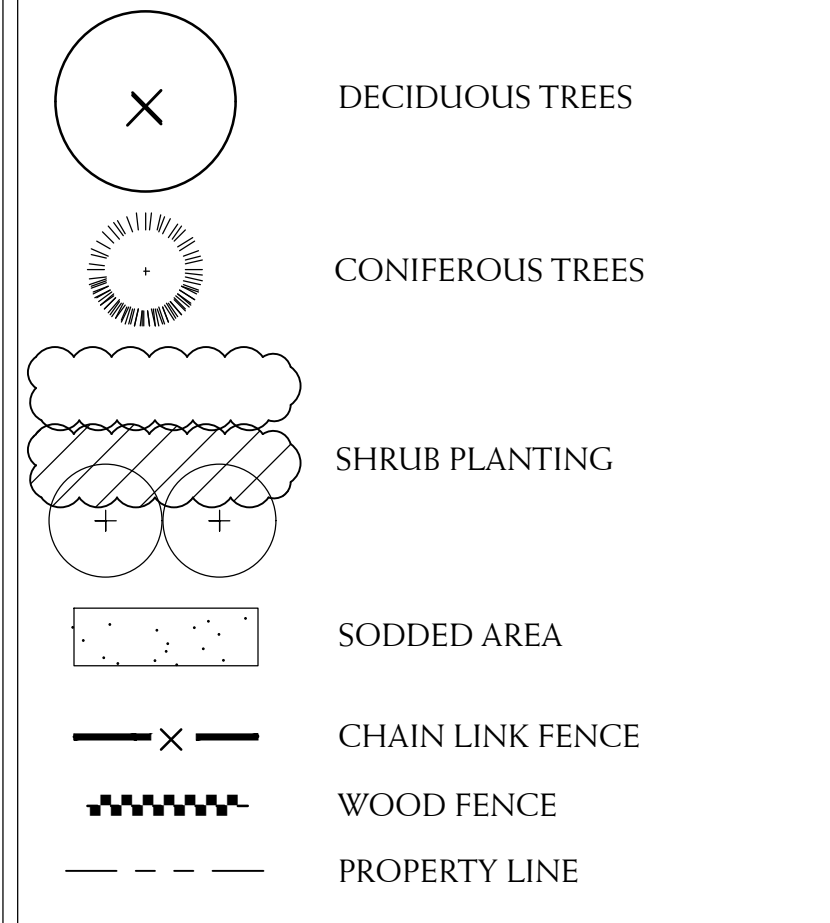
SEE SHEET L-1 FOR MASTER PLANT LIST



KEY MAP



LEGEND



BASE INFORMATION OBTAINED ELECTRONICALLY FROM A. BALDASSARRA ARCHITECT INC. (JOB NO. P-1319; TEL. 905-660-0722)

no.	date	version	by
9.	JUN 1 2022	RE-ISSUED FOR SPA	SO
8.	SEPT 11 2020	ISSUED FOR SPA	SO/LK
7.	MAR 13 2020	ISSUED FOR SUBMISSION	JD
6.	APRIL 23 2019	ISSUED FOR DISCUSSION / REVIEW	AC
5.	OCT 4 2018	RE-ISSUED FOR SUBMISSION	DN
4.	MAR 6 2017	RE-ISSUED FOR SUBMISSION	LK

All information hereon to be checked and verified at the site and any discrepancies must be reported to and clarified by the landscape architect before commencing work. All drawings, specifications, details, digital information, etc., prepared by the landscape architect are instruments of service and as such are his property and must be returned at his request.

MEMBER

ALEXANDER BUDREVICS & ASSOCIATES LIMITED
LANDSCAPE ARCHITECTS

895 Don Mills Road, Second Tower, Suite 212
Toronto, Ontario, Canada, M3C 1W3

☎ 416.444.5201
☎ 416.444.5208

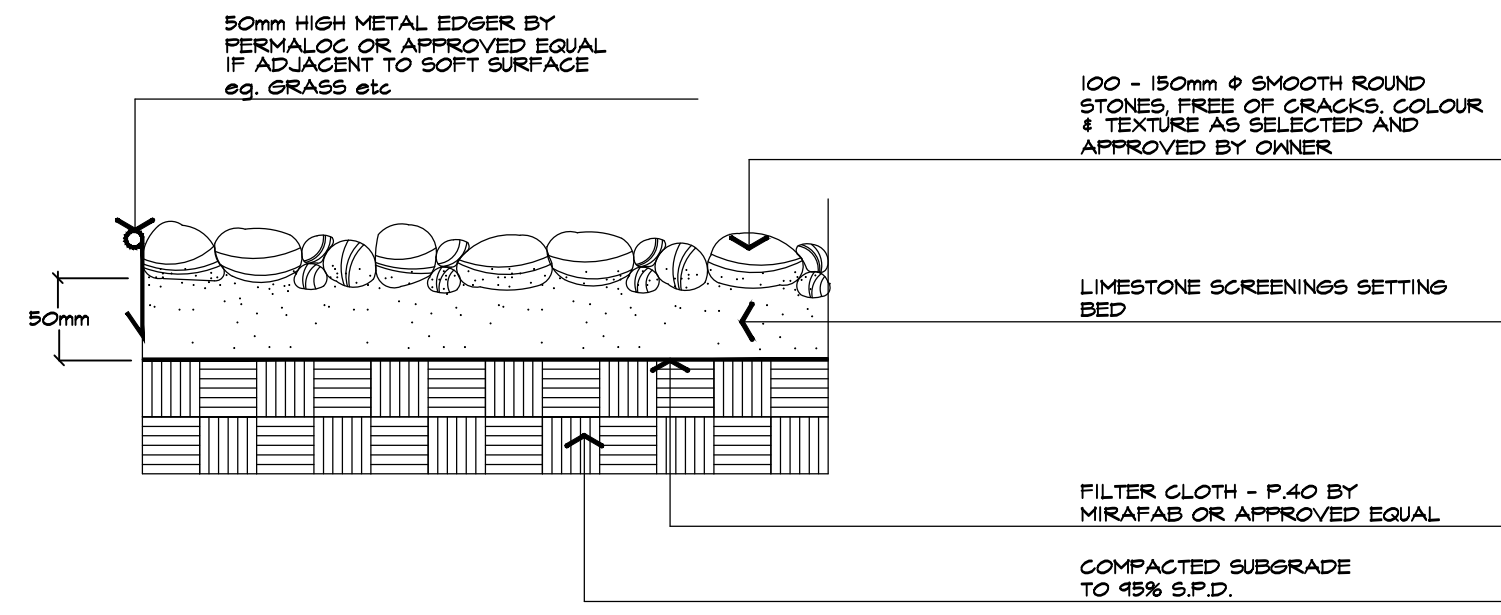
www.budrevics.com

project York Region File Number: SP.17.E.0012
MOUNT ALBERT SQUARE
COMMERCIAL RETAIL UNITS
 2 DON ROSE BOULEVARD
 TOWN OF EAST GWILLIMBURY, ON
 BALDASSARRA ARCHITECTS INC.

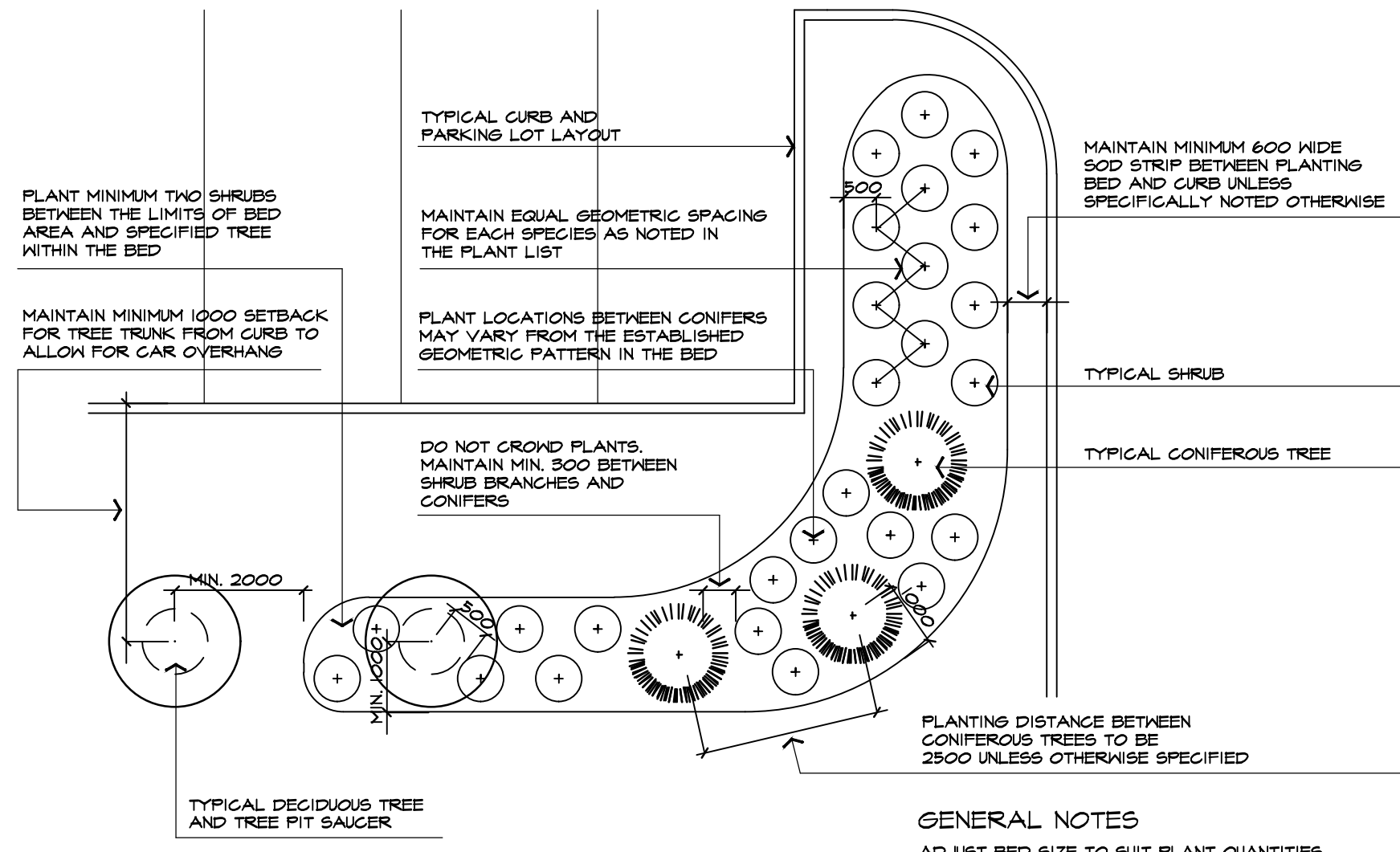
BUFFER LANDSCAPE PLAN

date	NOVEMBER 03, 2015	drawn	JD
scale*	1:10	file	3017 L2 R9-220601
direction		project no.	3017
		sheet no.	L-2

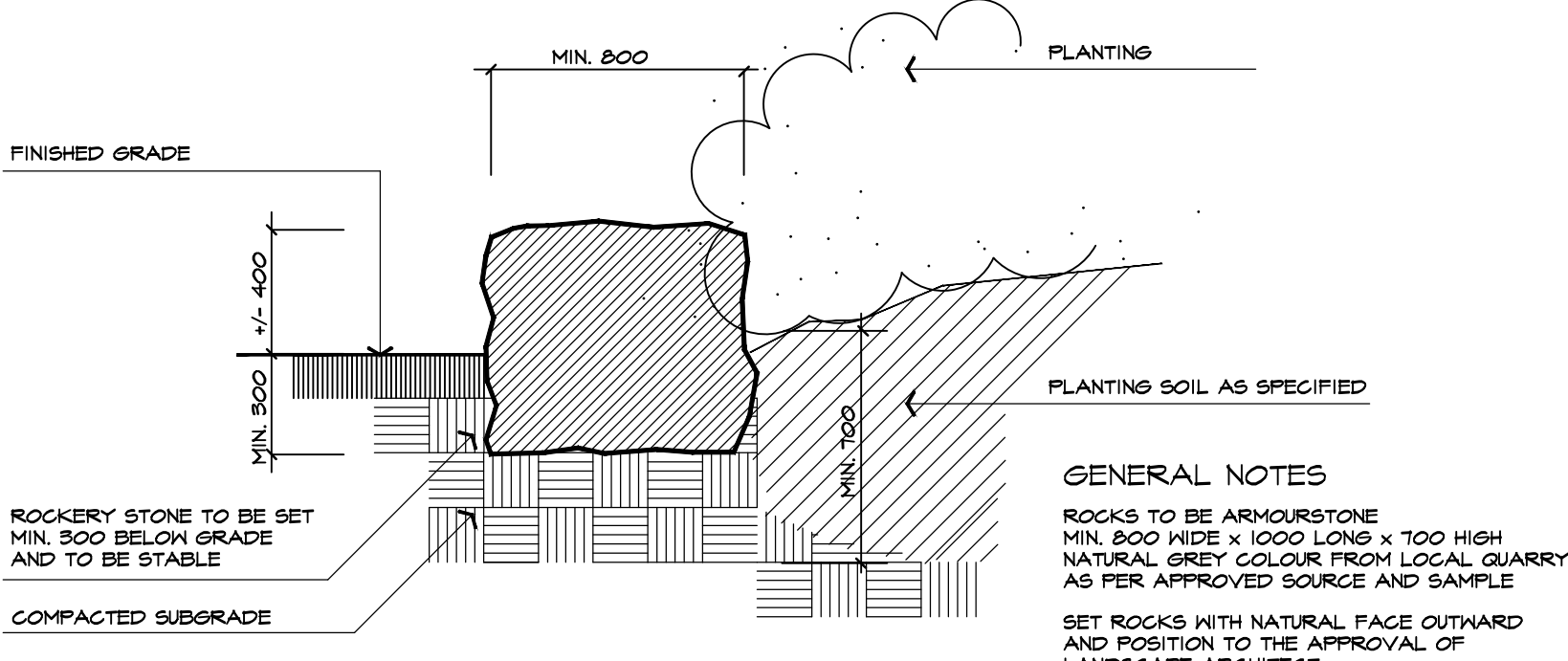
*NOTED SCALE IS APPLICABLE ONLY WHEN PRINTED ON ARCH D (34"x36") SIZE SHEET



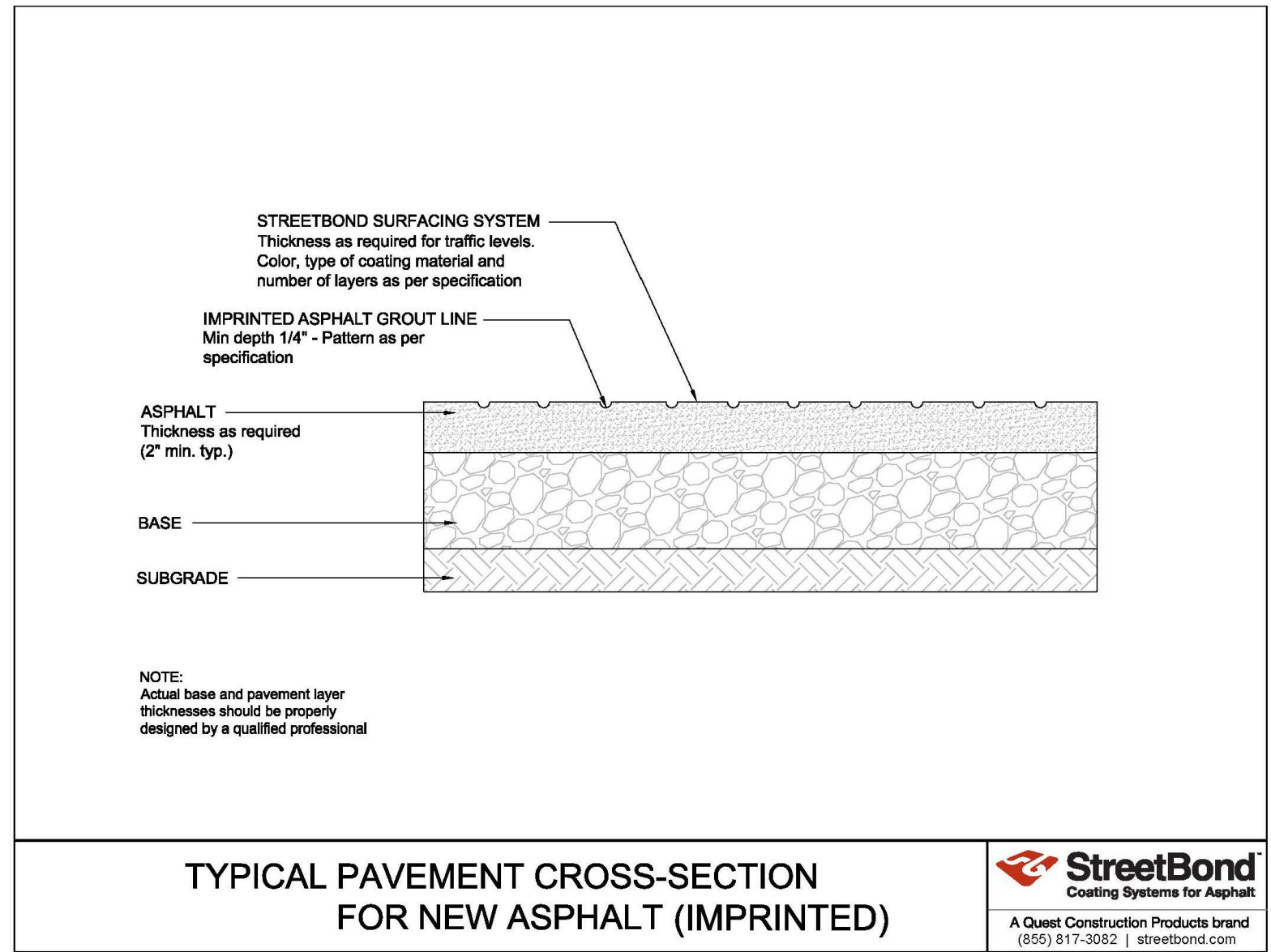
6 BEACH STONES DETAIL NTS
ABAL H601-450518



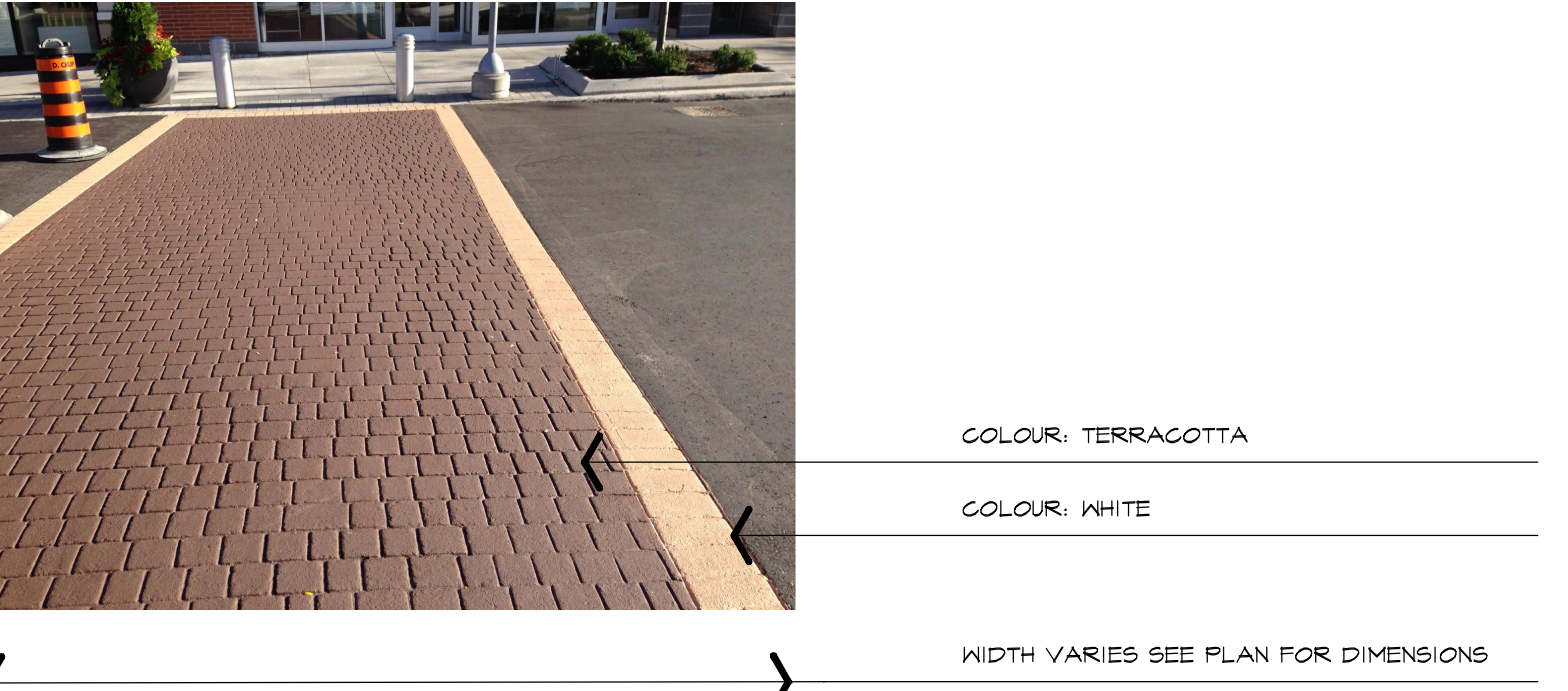
4 TYPICAL PLANTING LAYOUT NTS
ABAL P401-140528



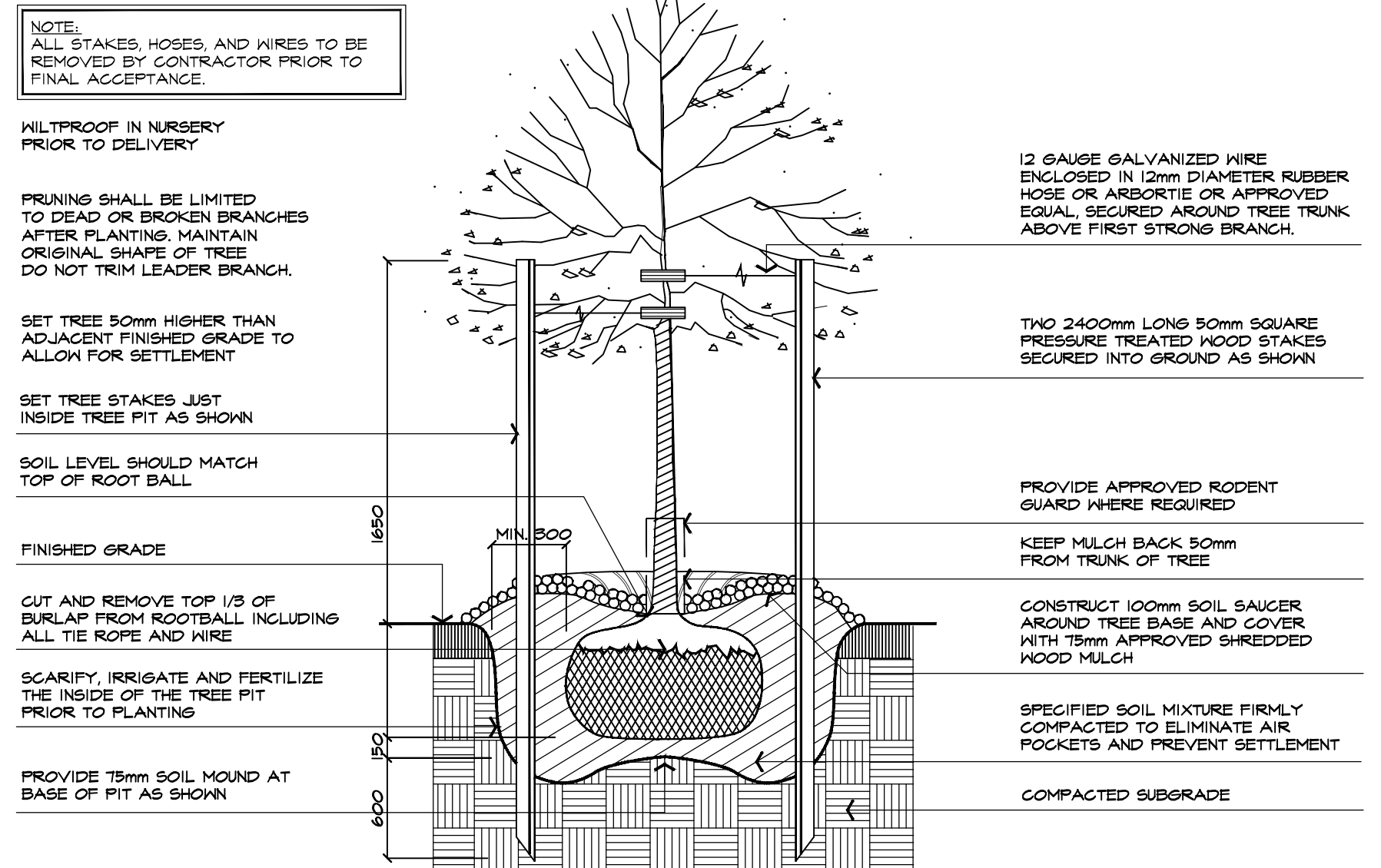
7 ROCKERY STONE DETAIL NTS
ABAL R202AX-151018



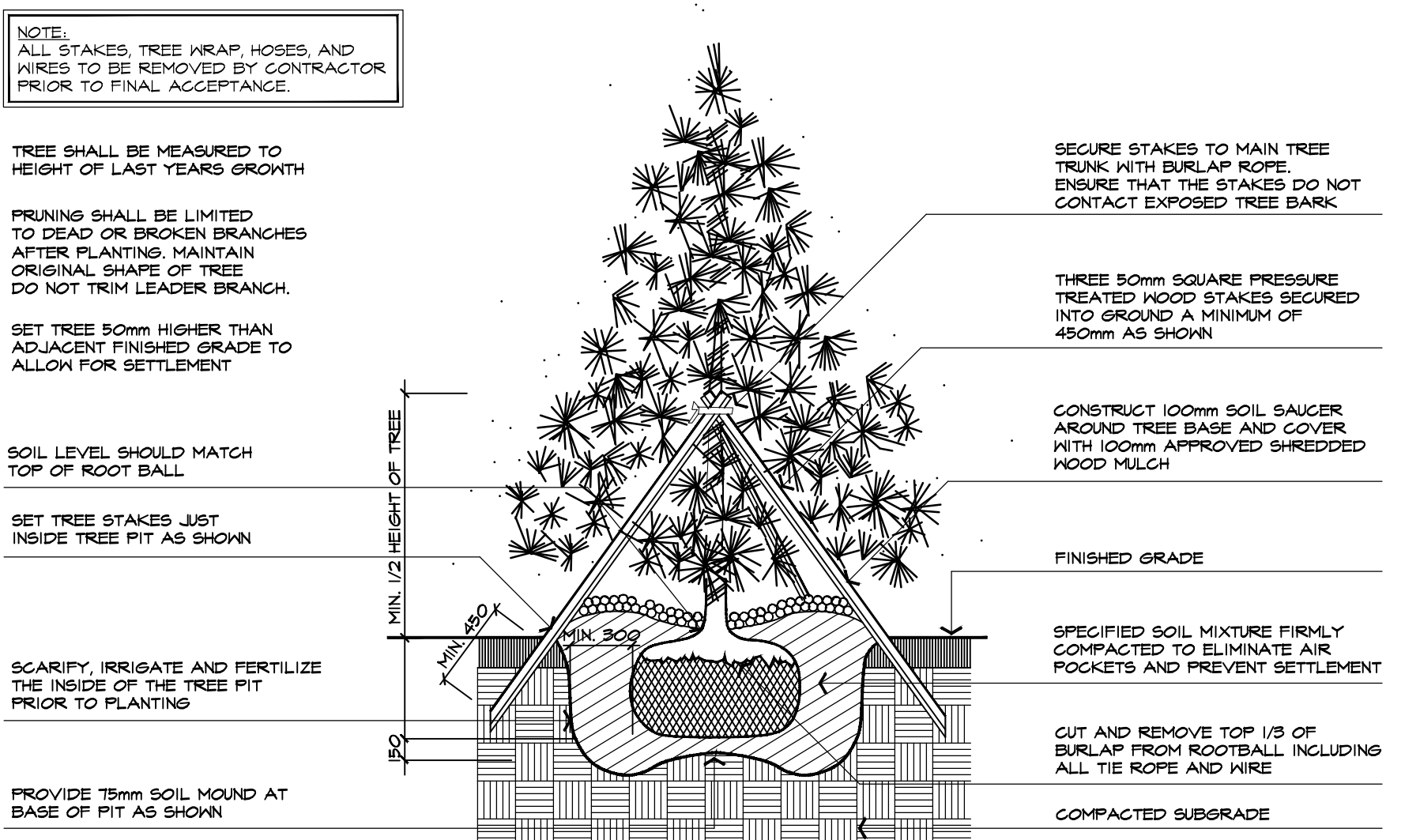
NOTES:
STREETBOND 150 SURFACING TO BE INSTALLED BY MULTISEAL INC. (416-743-6017) OR AN EQUIVALENT ACCREDITED APPLICATOR.
PRODUCT INFORMATION CONTACT - DOUG BAIN OF HUB SURFACE SYSTEMS AT 416-540-4287 doug.bain@hubss.com.
PATTERNS AND COLOURS TO BE APPROVED BEFORE ORDERING.



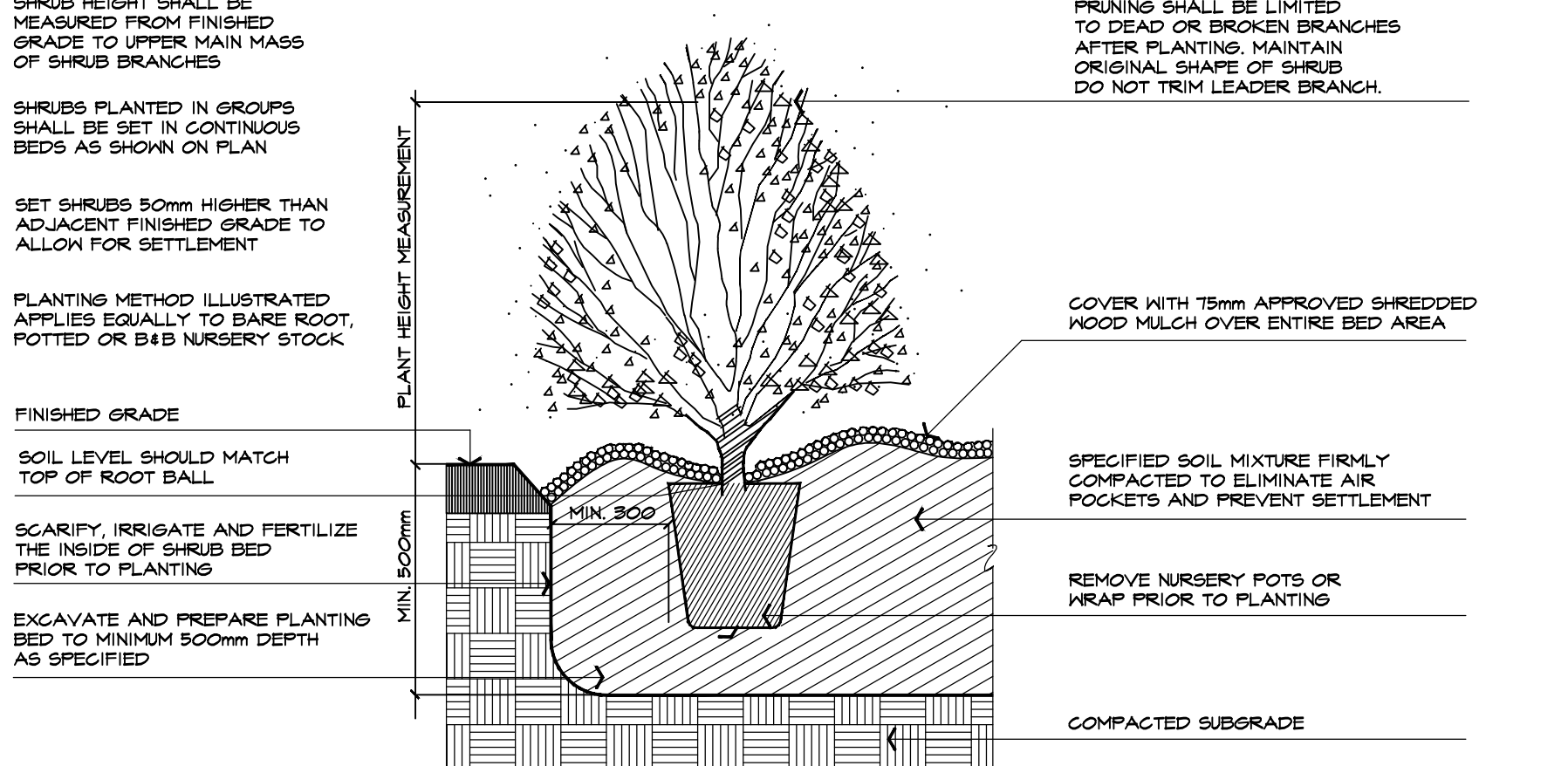
5 IMPRESSED ASPHALT NTS
MANUFACTURER: HUB SURFACE SYSTEMS (416-540-4287 - DOUG BAIN)
PRODUCT: STREET BOND 150
PATTERN: 6 INCH SQUARE TILE (PATTERN #20-101)
COLOUR: TERRA COTTA
BOARDER: WHITE



1 DECIDUOUS TREE PLANTING DETAIL NTS
ABAL P101-121214



2 CONIFEROUS TREE PLANTING DETAIL NTS
ABAL P201-121217



3 SHRUB PLANTING DETAIL NTS
ABAL P301-121217

no.	date	version	by
9.	JUN 1 2022	RE-ISSUED FOR SPA	SO
8.	SEPT 11 2020	ISSUED FOR SPA	SO/LK
7.	MAR 13 2020	ISSUED FOR SUBMISSION	JD
6.	APRIL 23 2019	ISSUED FOR DISCUSSION / REVIEW	AC
5.	OCT 4 2018	RE-ISSUED FOR SUBMISSION	DN
4.	MAR 6 2017	RE-ISSUED FOR SUBMISSION	LK

All information hereon to be checked and verified at the site and any discrepancies must be reported to and clarified by the landscape architect before commencing work. All drawings, specifications, details, digital information, etc., prepared by the landscape architect are instruments of service and as such are his property and must be returned at his request.

ALEXANDER BUDREVICS
LANDSCAPE ARCHITECTS
856 Don Mills Road, Second Tower, Suite 212
Toronto, Ontario, Canada, M3C 1W3
416.444.5201
416.444.5208
www.budrevics.com


project York Region File Number: SP.17.E.0012
**MOUNT ALBERT SQUARE
COMMERCIAL RETAIL UNITS**
2 DON ROSE BOULEVARD
TOWN OF EAST GWILLIMBURY, ON
BALDASSARRA ARCHITECTS INC.

LANDSCAPE DETAILS

date	NOVEMBER 03, 2015	drawn	JD
scale	AS SHOWN	file	3017 D1 R9-220601
direction		project no.	3017
		sheet no.	D-1

*NOTED SCALE IS APPLICABLE ONLY WHEN PRINTED ON ARCH D (34"x36") SIZE SHEET

MBR200-S 200 SERIES



MATERIALS: The bike rack is constructed using galvanized H.S. steel tube and an aluminum casting. Custom raised lettering is available.

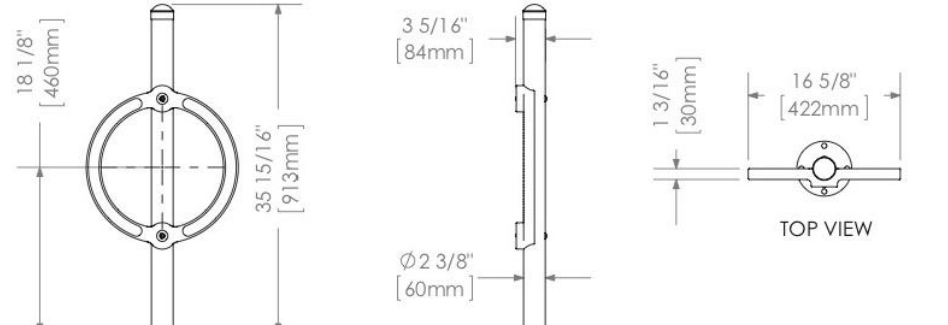
FINISH: The bike rack uses a galvanized post with a natural finish on the aluminum ring casting. The Maglin Powdercoat finish is also available.

INSTALLATION: The bike rack is delivered pre-assembled.

TO SPECIFY: Select MBR200-S
Choose:
- Powdercoat Color

OPTIONS: Galvanized Finish
 Surface Mount (MBR200-S-G)

DIMENSIONS:
Height: 35.94" (913mm)
Diameter: 16.63" (422mm)
Weight: 18.45lbs (8.37kg)




MAGLIN
Site Furniture
T: 800-718-5508
F: 877-280-8993
www.maglin.com
sales@maglin.com

3 BIKE RACK DETAIL NTS
MBR200-S BIKE RACK AS SUPPLIED BY MAGLIN SITE FURNITURE INC. COLOR: POWDERCOAT BLACK

MBE-0870-0001 800 SERIES

Legacy # MLB870-PCC



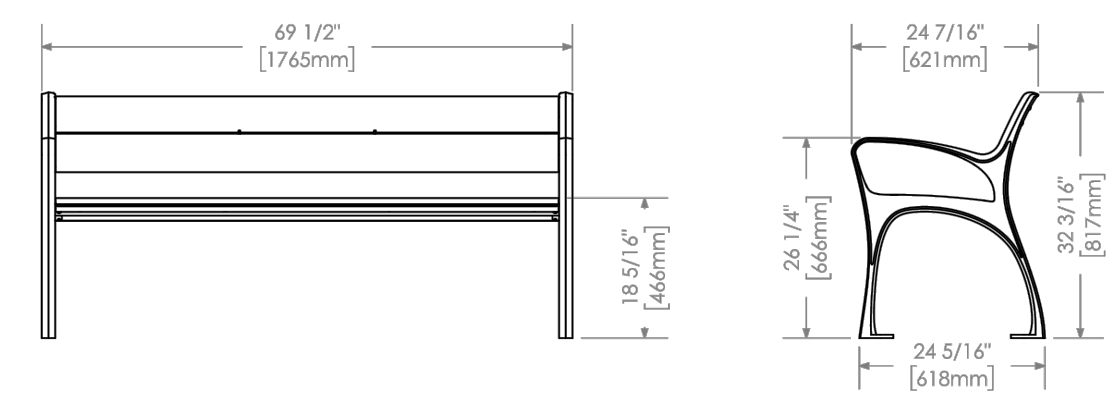
MATERIALS: Bench ends are made from solid cast aluminum. The seat employs high density paper composite (HDPC) slats - Charcoal color.

FINISH: All steel components are protected with E-Coat rust proofing. The Maglin Powdercoat System provides a durable finish on all metal surfaces.

INSTALLATION: The bench is delivered pre-assembled. Holes (0.5") are provided in each foot for securing to base.

TO SPECIFY: Select MBE-0870-0001
Choose:
- Powdercoat Color

HEIGHT: 32.2" (81.7cm) LENGTH: 69.5" (176.5cm) DEPTH: 24.4" (62.1cm) WEIGHT: 118.77lbs (53.9kg)



MAGLIN
Site Furniture
T: 800-718-5508
F: 877-280-8993
www.maglin.com
sales@maglin.com

4 BENCH DETAIL NTS
MBE-0870-0001 BENCH AS SUPPLIED BY MAGLIN SITE FURNITURE INC. COLOR: POWDERCOAT BLACK

CHAIN LINK FENCE DETAIL

VARIES - 2400mm MAX. O.C.

ALL POST CAPS AND STANDARD DECORATIVE FITTINGS AS SUPPLIED BY MANUFACTURER

KNUCKLED TOP & BOTTOM EDGES

STRETCHER BAR BANDS 500mm O.C. 6x19mm MINIMUM

STRETCHER BAR 5x19mm MINIMUM

43mm O.D. TERMINAL POSTS INSTALLED AT ALL ENDS, CORNERS OR GATES

43mm O.D. BRACE RAILS TO BE INSTALLED AT ALL ENDS, CORNERS AND ALONG STEEP TOPOGRAPHY

DROP FORGED ADJUSTABLE TURNBUCKLE AT BOTH ENDS

FINISHED GRADE

POURED CONCRETE FOOTINGS TO BE 32MPa @ 28 DAYS, TESTED TO MINIMUM STANDARDS. SLOPE TOP OF FOOTING AWAY FROM POST.

MIN. 1200

350Ø FOOTING FOR TERMINAL POST

300Ø FOOTING FOR LINE POST

43mm O.D. TOP RAIL RANDOM LENGTHS JOINED WITH 180mm COUPLINGS

60mm LINE POSTS

SINGLE STRAND TENSION WIRE - 6 GAUGE OR 43mm BOTTOM RAIL AS REQUIRED BY MUNICIPALITY

MAXIMUM 15mm CLEARANCE

COMPACTED SUBGRADE

ALL POST AND FITTING FINISHES TO BE BLACK GLOSS ENAMEL APPLIED BY EITHER FACTORY CONTROLLED POWDER COAT & BAKING APPLICATION OR BY PRIMING AND ELECTROSTATIC PAINTING ON SITE PRIOR TO MESH INSTALLATION AS APPROVED BY LANDSCAPE ARCHITECT

1 CHAIN LINK FENCE DETAIL NTS
TYPICAL INSTALLATION ABAL F101X-180412

WOOD SCREEN DETAIL

2.1 M HIGH

150 x 150 POST

25 OVERLAP

50 x 150 TOP CAP

100 x 100 RAILS ON EDGE

25 x 150 VERTICAL BOARDS

PARTIAL PLAN

2000 O.C.

50 x 150 TOP CAP

100 x 100 TOP RAIL ON EDGE

150 x 150 POST

25 x 150 VERTICAL BOARDS

100 x 100 MID-RAIL ON EDGE

100 x 100 BOTTOM RAIL ON EDGE

FINISHED GRADE

SECTION

2100

100

1200

150

350Ø

GALVANIZED STANDARD FENCE BRACKETS FOR ALL RAILS AT POST JOINTS

32 MPA POURED CONCRETE FOOTINGS

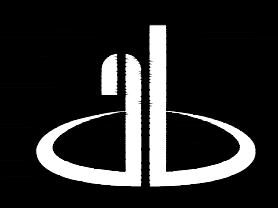
COMPACTED SUBGRADE

GENERAL NOTES
USE NO.1 GRADE CEDAR OR PRESSURE TREATED RED PINE, JACK PINE OR APPROVED EQUAL WOOD
APPLY TWO COATS OF APPROVED STAIN AS SPECIFIED OR REQUIRED BY OWNER
SECURE ALL LUMBER WITH GALVANIZED NAILS
ALL DIMENSIONS SHOWN IN MILLIMETERS

2 WOOD SCREEN DETAIL NTS
TYPICAL INSTALLATION ABAL F201AX-180411

no.	date	version	by
9.	JUN 1 2022	RE-ISSUED FOR SPA	SO
8.	SEPT 11 2020	ISSUED FOR SPA	SO/LK
7.	MAR 13 2020	ISSUED FOR SUBMISSION	JD
6.	APRIL 23 2019	ISSUED FOR DISCUSSION / REVIEW	AC
5.	OCT 4 2018	RE-ISSUED FOR SUBMISSION	DN
4.	MAR 6 2017	RE-ISSUED FOR SUBMISSION	LK

All information hereon to be checked and verified at the site and any discrepancies must be reported to and clarified by the landscape architect before commencing work. All drawings, specifications, details, digital information, etc., prepared by the landscape architect are instruments of service and as such are his property and must be returned at his request.




ALEXANDER BUDREVICS
ASSOCIATES LIMITED
LANDSCAPE ARCHITECTS

895 Don Mills Road, Second Tower, Suite 212
Toronto, Ontario, Canada, M3C 1W3

416.444.5201
416.444.5208

www.budrevics.com



project York Region File Number: SP.17.E.0012
MOUNT ALBERT SQUARE
COMMERCIAL RETAIL UNITS
2 DON ROSE BOULEVARD
TOWN OF EAST GWILLIMBURY, ON
BALDASSARRA ARCHITECTS INC.

drawing

LANDSCAPE DETAILS

date	NOVEMBER 03, 2015	drawn	JD
scale*	AS SHOWN	file	3017 D2 R9-220601
direction		project no.	3017
		sheet no.	D-2

*NOTED SCALE IS APPLICABLE ONLY WHEN PRINTED ON ARCH D (34"x36") SIZE SHEET