

THIS DRAWING WAS PREPARED FOR USE ON A SPECIFIC SITE AS NOTED BELOW. CONTEMPORANEOUSLY WITH ITS ISSUE DATE AS SHOWN BELOW, AND IT IS NOT SUITABLE FOR USE ON A DIFFERENT PROJECT SITE OR AT A LATER TIME. USE OF THIS DRAWING FOR REFERENCE OR REPRODUCTION ON ANOTHER PROJECT REQUIRES THE SERVICES OF PROPERLY LICENSED ARCHITECTS AND ENGINEERS. CONTRACTOR MUST VERIFY AND ACCEPT RESPONSIBILITY FOR ALL DIMENSIONS AND CONDITIONS ON SITE AND MUST NOTIFY ABRARCH ARCHITECTURE INC. OF ANY VARIATIONS FROM THE PROVIDED INFORMATION. ABRARCH ARCHITECTURE INC. IS NOT RESPONSIBLE FOR THE ACCURACY OF ENGINEERING INFORMATION SHOWN ON THIS DRAWING. REFER TO APPLICABLE ENGINEERING DRAWINGS BEFORE STARTING WORK. THIS DRAWING IS NOT TO BE SCALED. ALL ARCHITECTURAL SYMBOLS ARE GRAPHIC REPRESENTATIONS ONLY.

SHEET NOTES

- 1 BRICK VENEER - BRAMPTON BRICK, VALENCIA (RED)
- 2 BRICK VENEER - BRAMPTON BRICK, VALENCIA (RED)
- 3 BRICK VENEER - BRAMPTON BRICK, VALENCIA (RED)
- 4 BLOCK VENEER - BRAMPTON BRICK, PEEL SILVER QUARTZ
- 5 EIFS - DRYVIT, 113 AMARILLO WHITE
- 6 RESERVED
- 7 PRE-FINISHED METAL - VICWEST, 55084 DARK RED
- 8 PRE-FINISHED METAL - VICWEST, 56072 CHARCOAL
- 9 PRE-FINISHED METAL - VICWEST, 56072 CHARCOAL
- 10 BRICK VENEER - BRAMPTON BRICK, VALENCIA (RED)
- 11 RESERVED
- 12 PAINT FINISH - WHITE (MATCH 56161 CAMBRIDGE WHITE)
- 13 RESERVED
- 14 STAIRCASE - STEEL, PAINTED
- 15 HANDRAIL - STEEL, PAINTED
- 16 HANDRAIL - POWDER COATED ALUMINUM WITH TEMPERED-LAMINATED GLAZING
- 17 RESERVED
- 18 STOREFRONT DOOR GLAZING - SEALED CLEAR GLAZING UNITS FRAME: CLEAR ANODIZED
- 19 STOREFRONT GLAZING - SEALED CLEAR GLAZING UNITS FRAME: CLEAR ANODIZED
- 20 MAIN ENTRANCE DOOR (CRU) GLAZING - SEALED CLEAR GLAZING UNITS FRAME: CLEAR ANODIZED
- 21 SERVICE / EXIT DOORS - HOLLOW METAL (CRU) FINISH: PRE-PANDED, WITH SMALL VISION PANEL. FRAME: PAINTED
- 22 OVERHEAD DOOR (CRU) FINISH: PRE-PANDED. FRAME: ALUMINUM
- 23 MAIN ENTRANCE DOOR (TOWNHOMES) GLAZING - SEALED CLEAR GLAZING UNITS FRAME: POWDER COATED (WHITE)
- 24 MAIN ENTRANCE DOOR (CONDOMINIUM) GLAZING - SEALED CLEAR GLAZING UNITS FRAME: POWDER COATED (GRAPHITE)
- 25 ALUMINUM WINDOWS GLAZING - SEALED CLEAR GLAZING UNITS FRAME: POWDER COATED (GRAPHITE)
- 26 ALUMINUM SLIDING DOORS GLAZING - SEALED CLEAR GLAZING UNITS FRAME: POWDER COATED (BLACK)
- 27 OVERHEAD DOOR (TOWNHOMES) FINISH: PRE-PANDED. FRAME: ALUMINUM

NO	DATE	ISSUE / ADDENDUM / REVISION

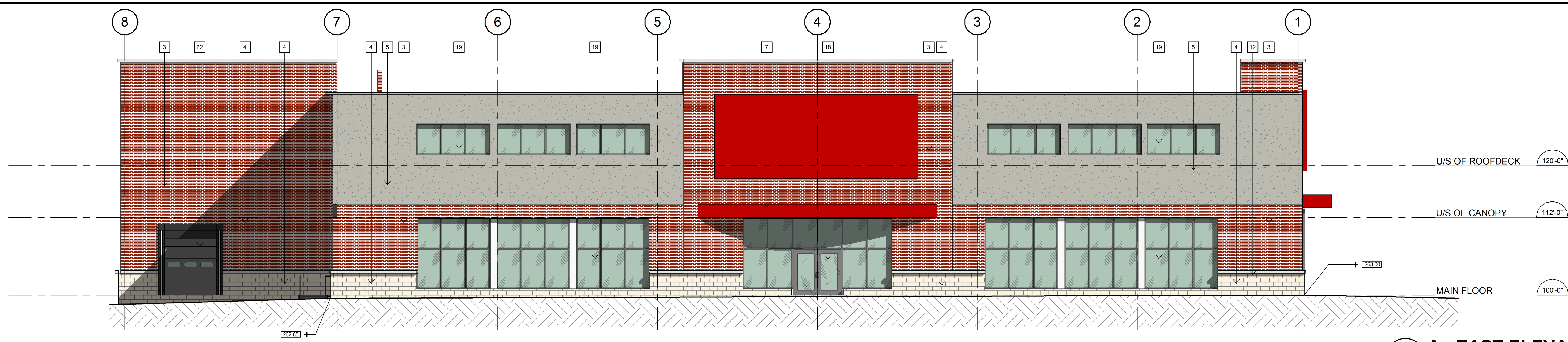
PROPOSED SHARON MIXED-USE DEVELOPMENT
19086 LESLIE STREET

EAST GWILLIMBURY ON

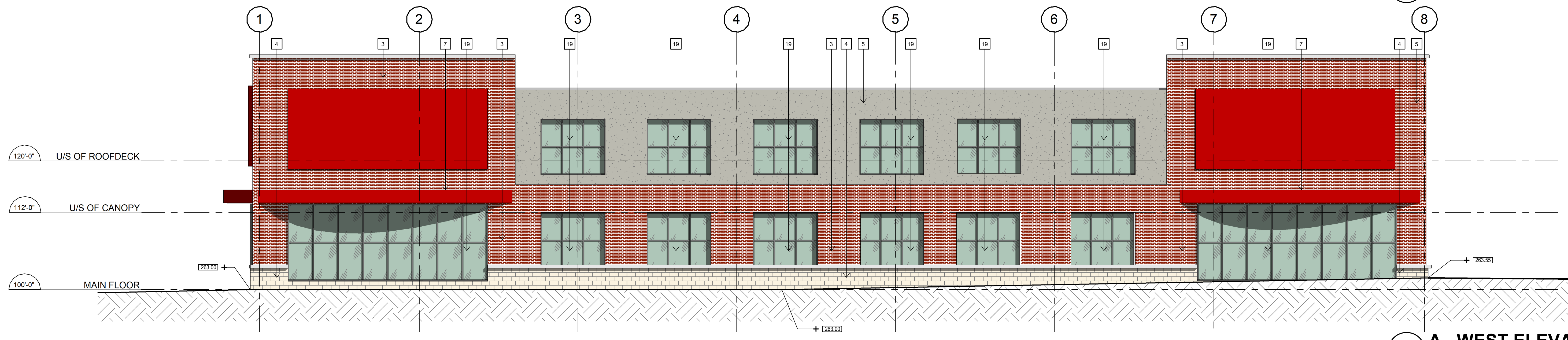
SEAL:

BLDG A - ELEVATIONS

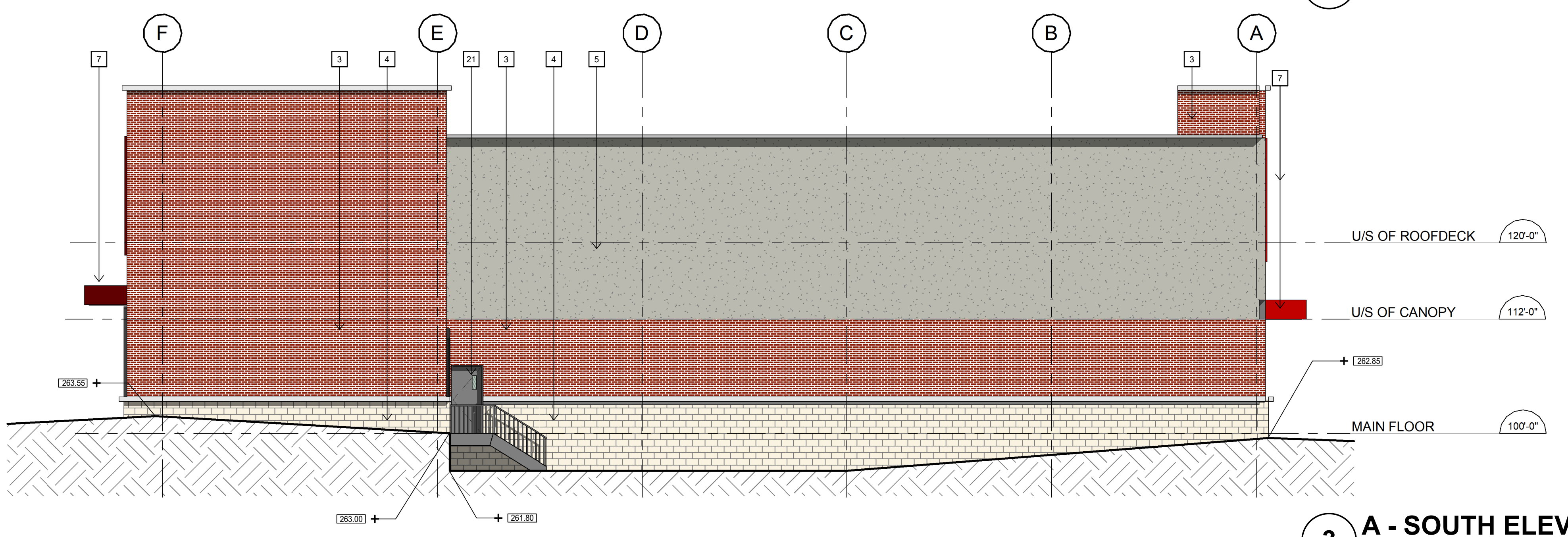
PROJECT NO:	3414
DRAWN BY:	LO
CHECKED BY:	KD
DATE:	2021-02-28 7:58:08 PM
SCALE:	As indicated
SHEET:	A2.1



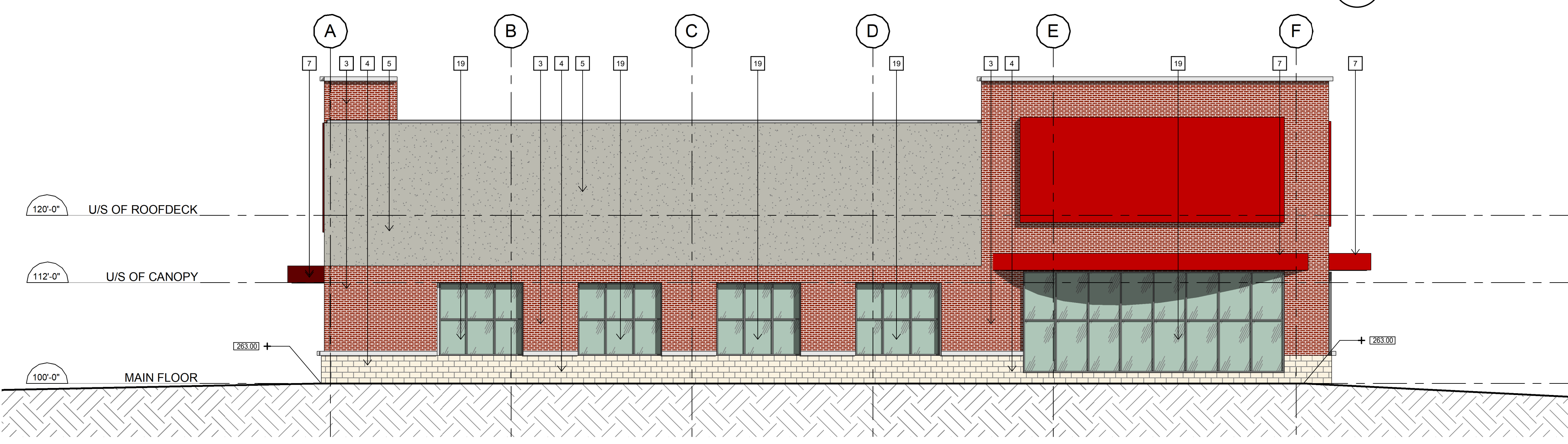
1 A - EAST ELEVATION
SCALE: 1/8" = 1'-0"



2 A - WEST ELEVATION
SCALE: 1/8" = 1'-0"



3 A - SOUTH ELEVATION
SCALE: 1/8" = 1'-0"



4 A - NORTH ELEVATION
SCALE: 1/8" = 1'-0"

2021-02-28 7:58:08 PM C:\Users\LO\Documents\3414_East_Gwillimbury_ARCH\20210115_LR_definitive_elevations.rvt

THIS DRAWING WAS PREPARED FOR USE ON A SPECIFIC SITE AS NOTED BELOW. CONTEMPORANEOUSLY WITH ITS ISSUE DATE AS SHOWN BELOW. AND IT IS NOT SUITABLE FOR USE ON A DIFFERENT PROJECT SITE OR AT A LATER TIME. USE OF THIS DRAWING FOR REFERENCE OR REPRODUCTION ON ANOTHER PROJECT REQUIRES THE SERVICES OF A PROFESSIONAL ARCHITECT OR ENGINEER. THE CONTRACTOR MUST VERIFY AND ACCEPT THE ACCURACY OF THE INFORMATION SHOWN ON THIS DRAWING. REFER TO APPLICABLE ENGINEERING DRAWINGS BEFORE STARTING WORK. THIS DRAWING IS NOT TO BE SCALED. ALL ARCHITECTURAL SYMBOLS ARE GRAPHIC REPRESENTATIONS ONLY.

SHEET NOTES

- 1 STONE VENEER - BORAL PLATINUM PRO-FIT
- 2 BRICK VENEER - BRAMPTON BRICK, MIDNIGHT GRANADA (DARK GREY)
- 3 BRICK VENEER - BRAMPTON BRICK, VALENCIA (RED)
- 4 BLOCK VENEER - BRAMPTON BRICK, PEEL SILVER QUARTZ
- 5 EIFS - DRYVIT, 113 AMARILLO WHITE
- 6 RESERVED
- 7 PRE-FINISHED METAL - VIOWEST, 55084 DARK RED
- 8 PRE-FINISHED METAL - ALUPLANK TCD, 505 TECH DRIED CHESTNUT
- 9 PRE-FINISHED METAL - VIOWEST, 56072 CHOCOLATE
- 10 PRE-FINISHED METAL - VIOWEST, 56161 CAMBRIDGE WHITE
- 11 RESERVED
- 12 PAINT FINISH - WHITE (MATCH 56161 CAMBRIDGE WHITE)
- 13 RESERVED
- 14 STAIRCASE - STEEL, PAINTED
- 15 HANDRAIL - STEEL, PAINTED
- 16 HANDRAIL - POWDER COATED ALUMINUM, WITH TEMPERED-LAMINATED GLAZING
- 17 RESERVED
- 18 STOREFRONT DOOR GLAZING, SEALED CLEAR GLAZING UNITS FRAME: CLEAR ANODIZED
- 19 STOREFRONT GLAZING GLAZING: SEALED CLEAR GLAZING UNITS FRAME: CLEAR ANODIZED
- 20 MAIN ENTRANCE DOOR (CRU) GLAZING: SEALED CLEAR GLAZING UNITS FRAME: CLEAR ANODIZED
- 21 SERVICE / EXIT DOORS - HOLLOW METAL (CRU) FINISH: PAINTED, WITH SMALL VISION PANEL FRAME: PAINTED
- 22 OVERHEAD DOOR (CRU) FINISH: PRE-PAINTEED FRAME: ALUMINUM
- 23 MAIN ENTRANCE DOOR (TOWNHOMES) GLAZING: SEALED CLEAR GLAZING UNITS FRAME: POWDER COATED (WHITE)
- 24 MAIN ENTRANCE DOOR (CONDOMINIUM) GLAZING: SEALED CLEAR GLAZING UNITS FRAME: POWDER COATED (GRAPHITE)
- 25 ALUMINUM WINDOWS GLAZING: SEALED CLEAR GLAZING UNITS FRAME: POWDER COATED (GRAPHITE)
- 26 ALUMINUM SLIDING DOORS GLAZING: SEALED CLEAR GLAZING UNITS FRAME: POWDER COATED (GRAPHITE)
- 27 OVERHEAD DOOR (TOWNHOMES) FINISH: PRE-PAINTEED FRAME: ALUMINUM

NO	DATE	ISSUE / ADDENDUM / REVISION

PROPOSED SHARON MIXED-USE DEVELOPMENT
19086 LESLIE STREET

EAST GWILLIMBURY ON

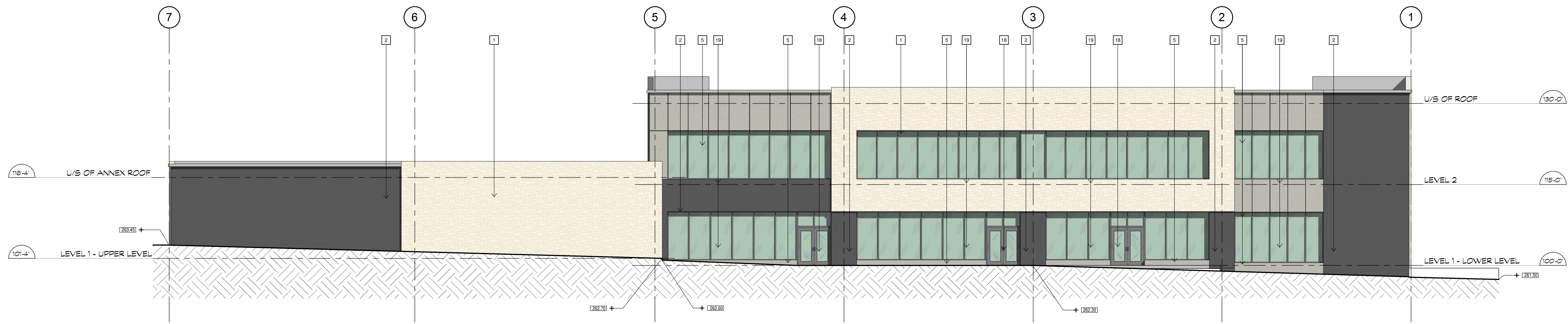
SEAL:

SHEET TITLE:
BLDG B - ELEVATIONS

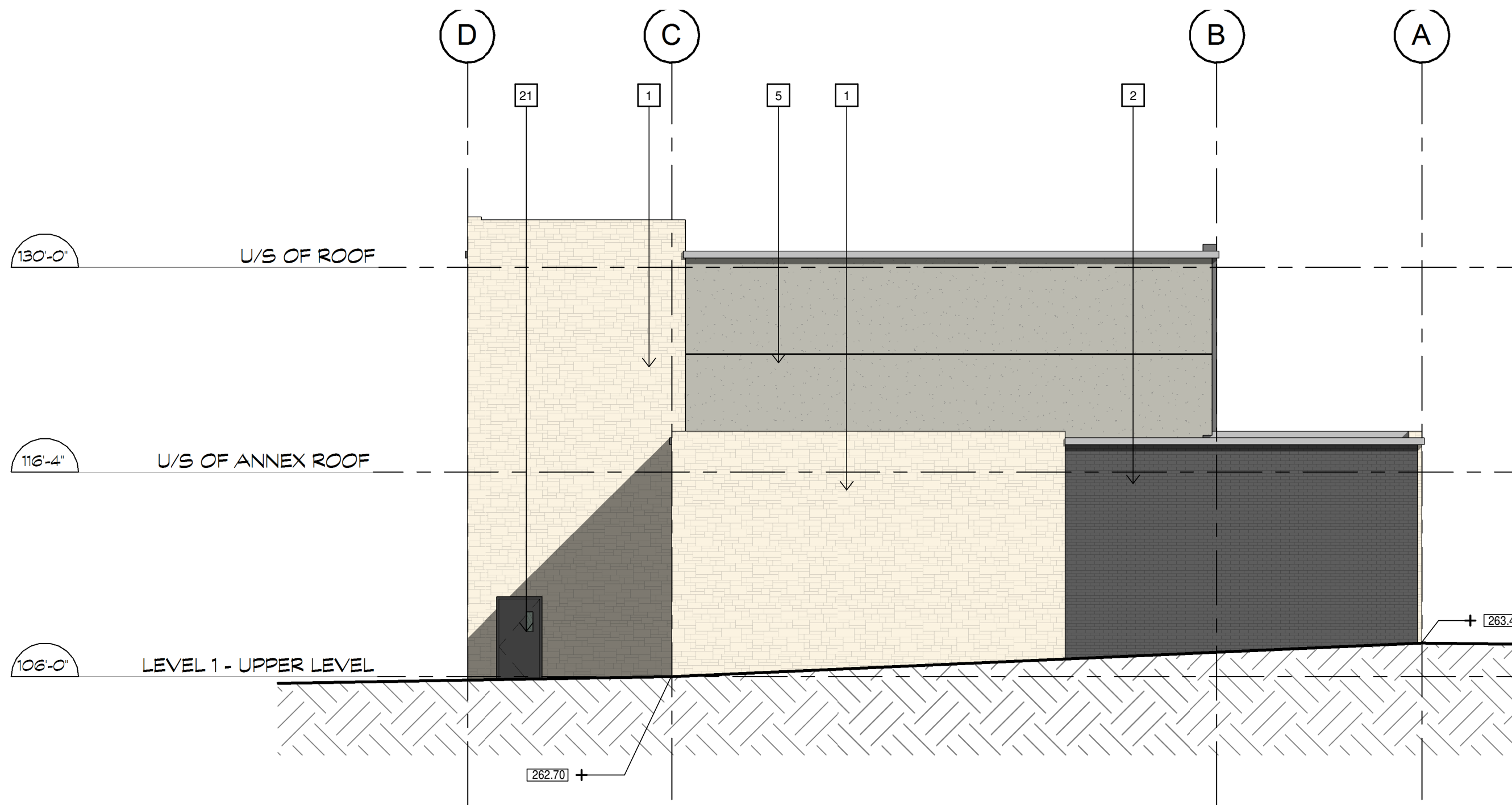
PROJECT NO:	3414
DRAWN BY:	LO
CHECKED BY:	KD
DATE:	17/09/2020 2:50:09 PM
SCALE:	As indicated
SHEET:	A2.2



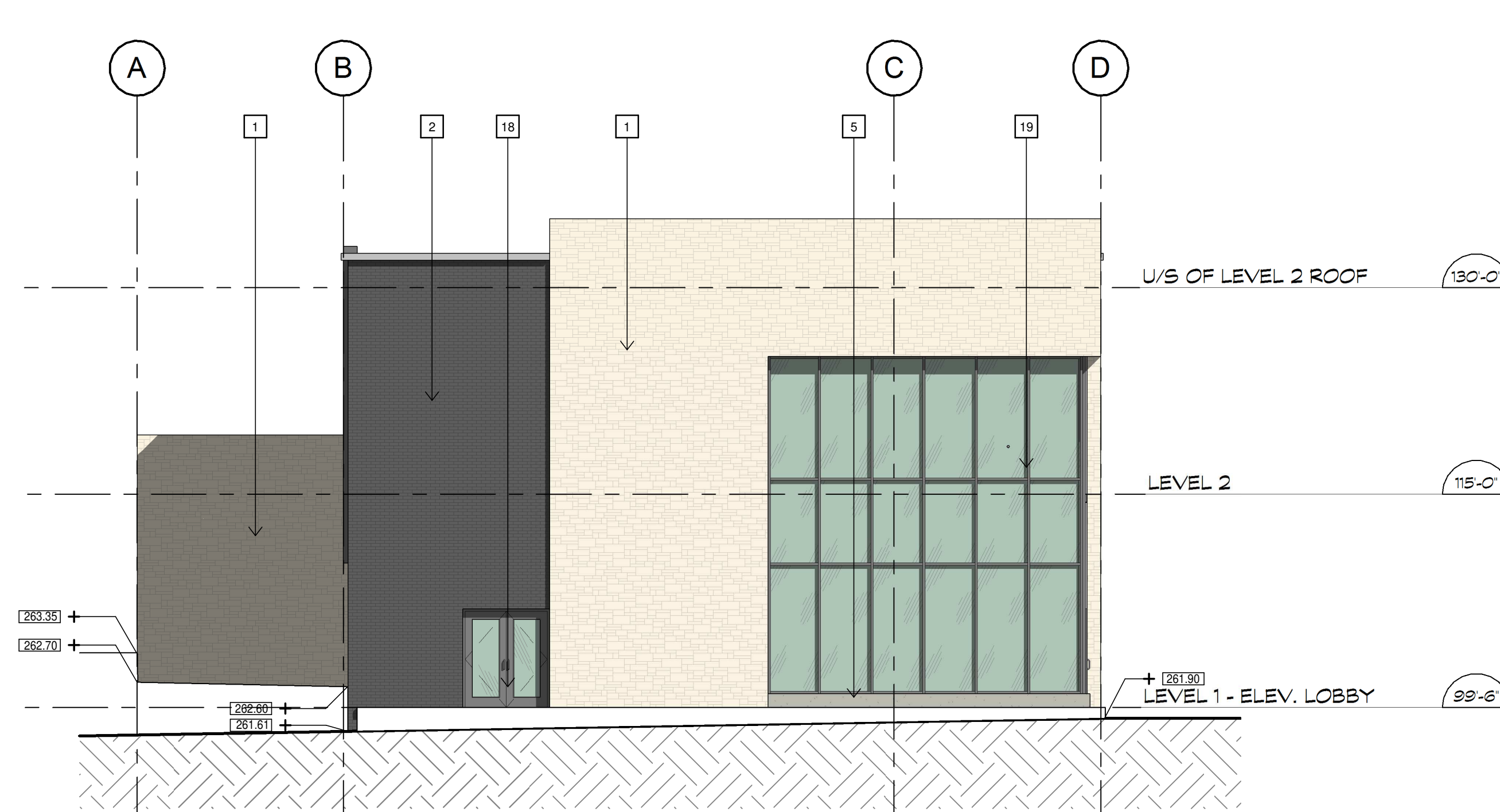
1 B - WEST ELEVATION
SCALE: 1/8" = 1'-0"



2 B - EAST ELEVATION
SCALE: 1/8" = 1'-0"



3 B - SOUTH ELEVATION
SCALE: 1/8" = 1'-0"



4 B - NORTH ELEVATION
SCALE: 1/8" = 1'-0"

THIS DRAWING WAS PREPARED FOR USE ON A SPECIFIC SITE AS NOTED BELOW. CONTEMPORANEOUSLY WITH ITS ISSUE DATE AS SHOWN BELOW. AND IT IS NOT SUITABLE FOR USE ON A DIFFERENT PROJECT SITE OR AT A LATER TIME. USE OF THIS DRAWING FOR REFERENCE OR REPRODUCTION ON ANOTHER PROJECT REQUIRES THE SERVICES OF PROFFER'S LICENSED ARCHITECTS AND ENGINEERS. THE CONTRACTOR SHALL VERIFY AND ACCEPT CONFORMANCE TO THE LAW. THE CONTRACTOR SHALL VERIFY AND ACCEPT ON SITE AND MUST NOTIFY ARCHITECTURE INC. OF ANY VARIATIONS FROM THE PROVIDED INFORMATION. ARCHITECTURE INC. IS NOT RESPONSIBLE FOR THE ACCURACY OF ENGINEERING INFORMATION SHOWN ON THIS DRAWING. REFER TO APPLICABLE ENGINEERING DRAWINGS BEFORE STARTING WORK. THIS DRAWING IS NOT TO BE SCALED. ALL ARCHITECTURAL SYMBOLS ARE GRAPHIC REPRESENTATIONS ONLY.

SHEET NOTES

- 1 STONE VENEER - BORAL PLATINUM PRO-FIT
- 2 BRICK VENEER - BRAMPTON BRICK, MIDNIGHT GRANADA (DARK GREY)
- 3 BRICK VENEER - BRAMPTON BRICK, VALENCIA (RED)
- 4 BLOCK VENEER - BRAMPTON BRICK, PEEL SILVER QUARTZ
- 5 EIFS - DRYVIT, 113 AMARILLO WHITE
- 6 RESERVED
- 7 PRE-FINISHED METAL - VIOWEST, 55084 DARK RED
- 8 PRE-FINISHED METAL - ALUPLANK TCD, 515 TECH DRIED CHESTNUT
- 9 PRE-FINISHED METAL - VIOWEST, 56072 CHOCOLATE
- 10 PRE-FINISHED METAL - VIOWEST, 56161 CAMBRIDGE WHITE
- 11 RESERVED
- 12 RESERVED
- 13 PAINT FINISH - WHITE (MATCH 56161 CAMBRIDGE WHITE)
- 14 RESERVED
- 15 STAIRCASE - STEEL, PAINTED
- 16 HANDRAIL - STEEL, PAINTED
- 17 HANDRAIL - POWDER COATED ALUMINUM, WITH TEMPERED-LAMINATED GLAZING
- 18 RESERVED
- 19 STOREFRONT DOOR GLAZING - SEALED CLEAR GLAZING UNITS FRAME: CLEAR ANODIZED
- 20 STOREFRONT GLAZING - SEALED CLEAR GLAZING UNITS FRAME: CLEAR ANODIZED
- 21 MAIN ENTRANCE DOOR (CRU) GLAZING - SEALED CLEAR GLAZING UNITS FRAME: CLEAR ANODIZED
- 22 SERVICE / EXIT DOORS - HOLLOW METAL (CRU) FINISH: PRE-PANDED, WITH SMALL VISION PANEL. FRAME: PAINTED
- 23 OVERHEAD DOOR (CRU) FINISH: PRE-PANDED. FRAME: ALUMINUM
- 24 MAIN ENTRANCE DOOR (TOWNHOMES) GLAZING - SEALED CLEAR GLAZING UNITS FRAME: POWDER COATED (WHITE)
- 25 MAIN ENTRANCE DOOR (CONDOMINIUM) GLAZING - SEALED CLEAR GLAZING UNITS FRAME: POWDER COATED (GRAPHITE)
- 26 ALUMINUM WINDOWS GLAZING - SEALED CLEAR GLAZING UNITS FRAME: POWDER COATED (GRAPHITE)
- 27 ALUMINUM SLIDING DOORS GLAZING - SEALED CLEAR GLAZING UNITS FRAME: POWDER COATED (GRAPHITE)
- 28 OVERHEAD DOOR (TOWNHOMES) FINISH: PRE-PANDED. FRAME: ALUMINUM

NO	DATE	ISSUE / ADDENDUM / REVISION

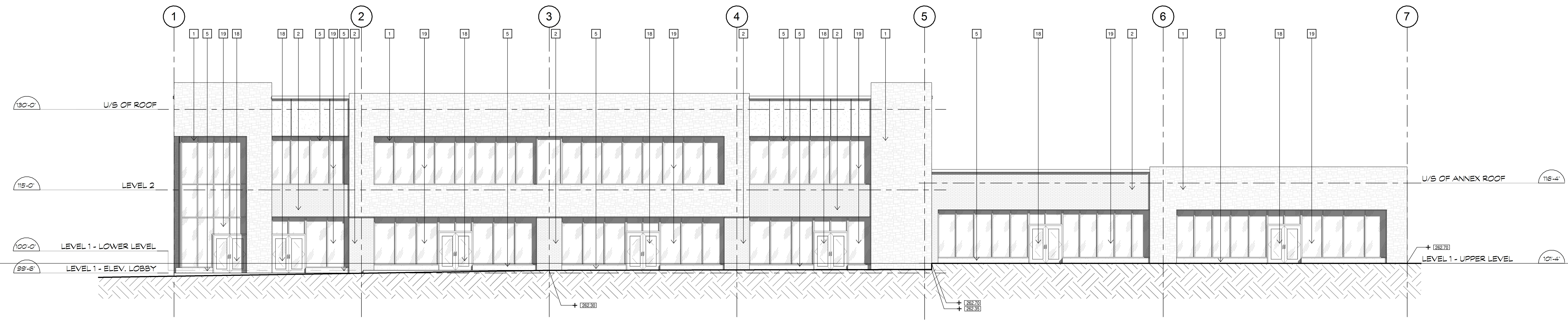
PROPOSED SHARON MIXED-USE DEVELOPMENT
19086 LESLIE STREET

EAST GWILLIMBURY ON

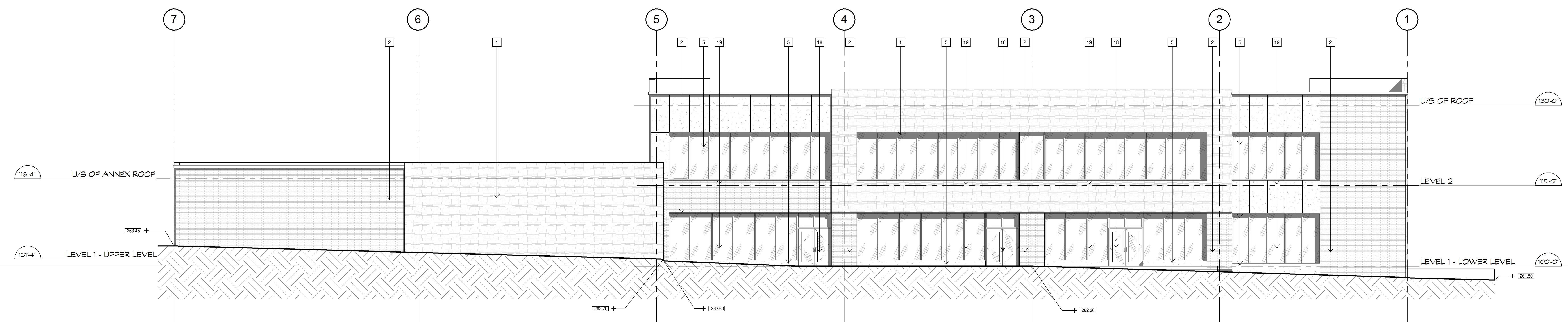
SEAL:

SHEET TITLE:
BLDG B - ELEVATIONS (B&W)

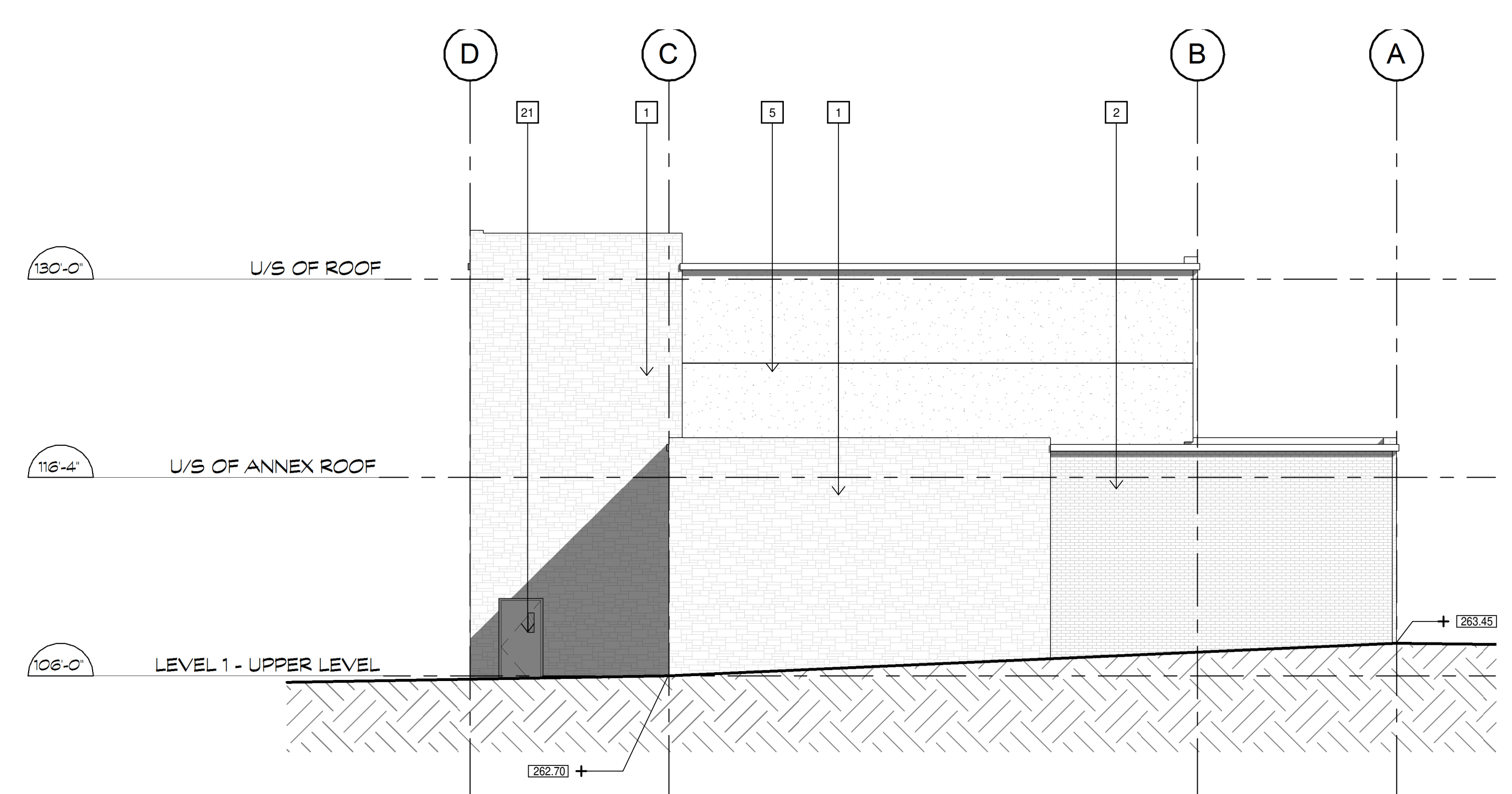
PROJECT NO:	3414
DRAWN BY:	LO
CHECKED BY:	KD
DATE:	17/09/2020 2:50:16 PM
SCALE:	As indicated
SHEET:	A2.2a



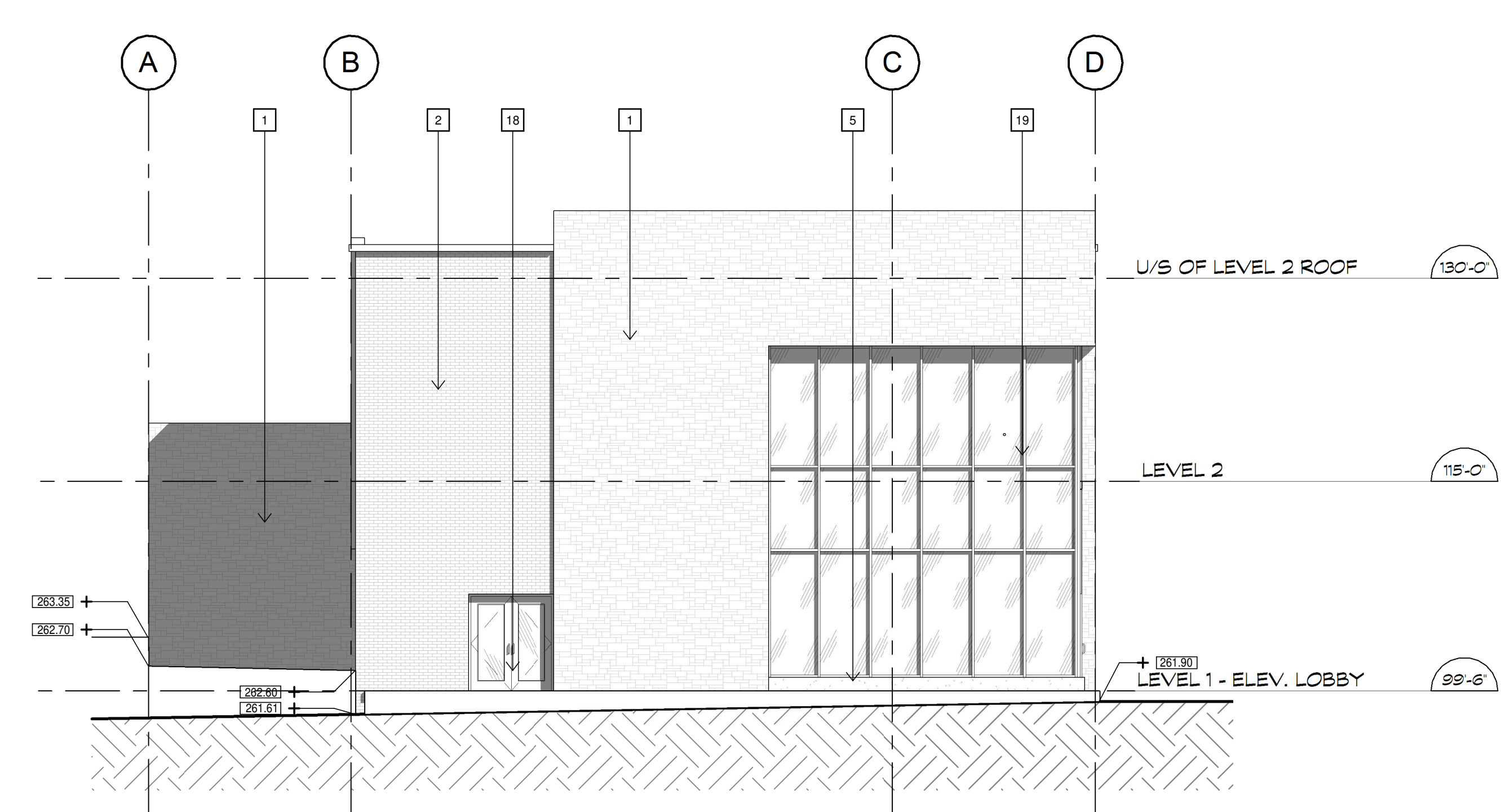
1 B - WEST ELEVATION (B&W)
A2.2a 1/8" = 1'-0"



2 B - EAST ELEVATION (B&W)
A2.2a 1/8" = 1'-0"



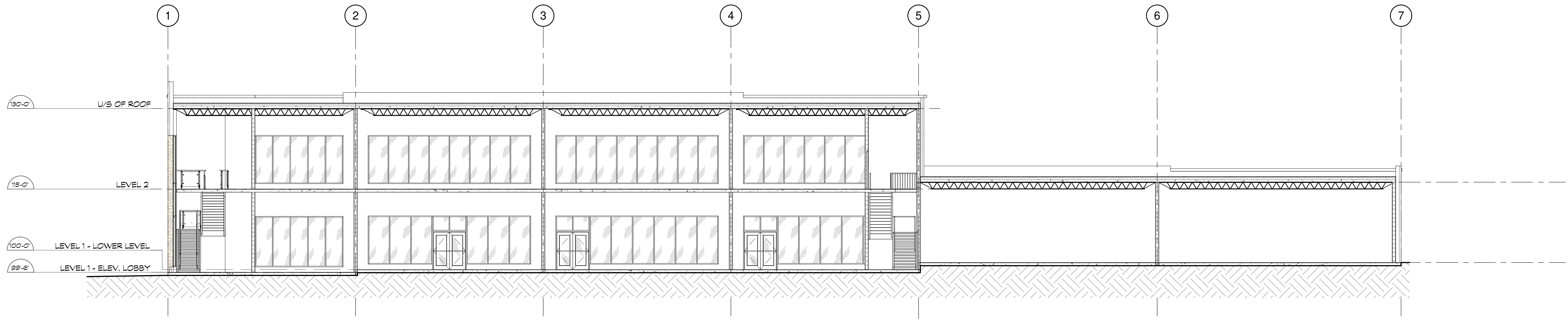
3 B - SOUTH ELEVATION (B&W)
A2.2a 1/8" = 1'-0"



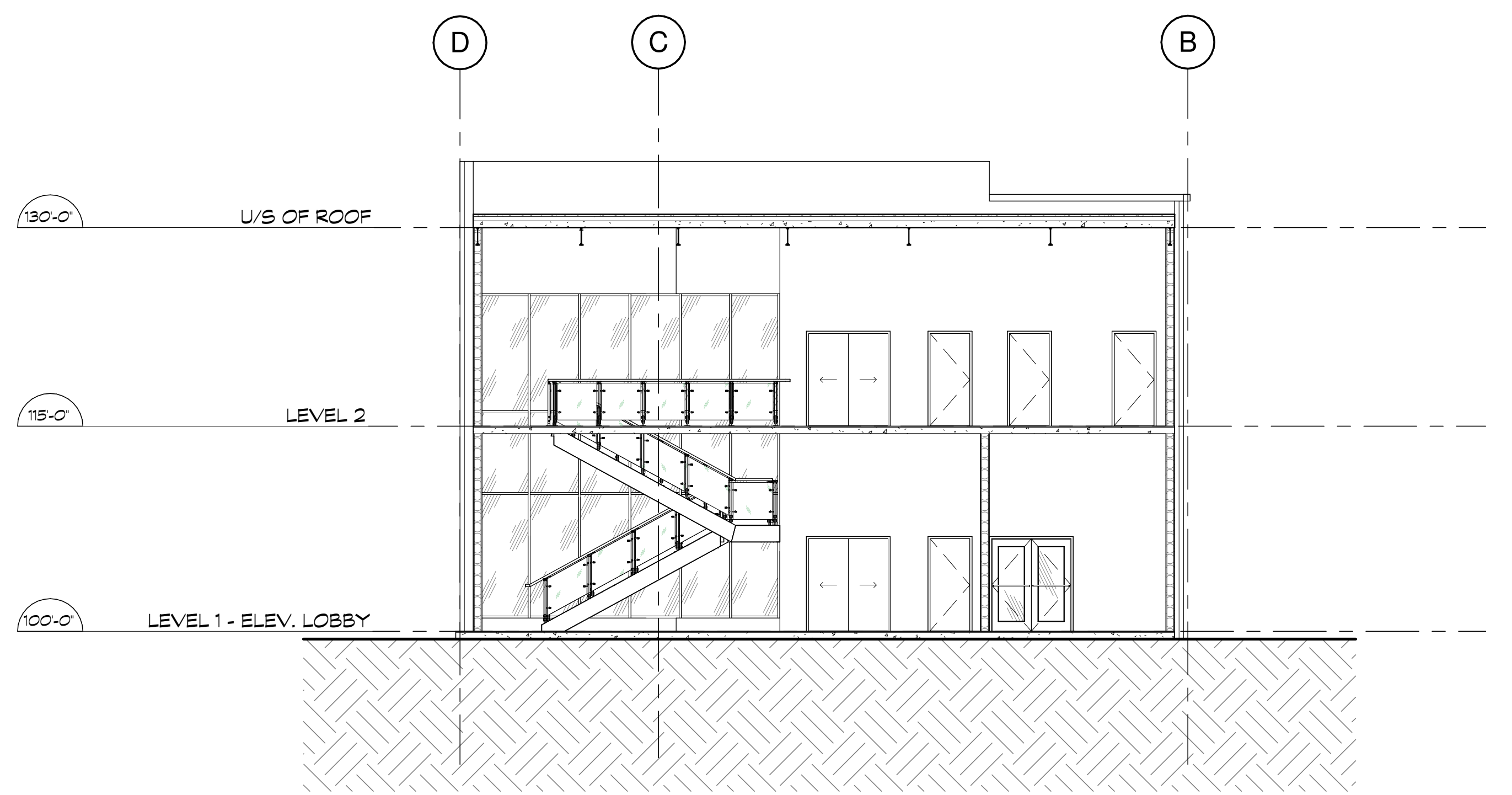
4 B - NORTH ELEVATION (B&W)
A2.2a 1/8" = 1'-0"

17/09/2020 2:50:16 PM
Client: Project 3414 - East Gwillimbury, A2.2a - 17/09/2020 2:50:16 PM

THIS DRAWING WAS PREPARED FOR USE ON A SPECIFIC SITE AS NOTED BELOW. CONTEMPORANEOUSLY WITH ITS ISSUE DATE AS SHOWN BELOW, AND IT IS NOT SUITABLE FOR USE ON A DIFFERENT PROJECT SITE OR AT A LATER TIME. USE OF THIS DRAWING FOR REFERENCE OR REPRODUCTION ON ANOTHER PROJECT REQUIRES THE SERVICES OF PROFESSIONAL ARCHITECTS AND ENGINEERS. THE CONTRACTOR MUST VERIFY AND ACCEPT RESPONSIBILITY FOR ALL DIMENSIONS AND CONDITIONS ON SITE AND MUST NOTIFY ABBARCH ARCHITECTURE INC. OF ANY VARIATIONS FROM THE PROVIDED INFORMATION. ABBARCH ARCHITECTURE INC. IS NOT RESPONSIBLE FOR THE ACCURACY OF ENGINEERING INFORMATION SHOWN ON THIS DRAWING. REFER TO APPLICABLE ENGINEERING DRAWINGS BEFORE STARTING WORK. THIS DRAWING IS NOT TO BE SCALED. ALL ARCHITECTURAL SYMBOLS ARE GRAPHIC REPRESENTATIONS ONLY.



1 BLDG B - LONGITUDINAL SECTION
SCALE: 1/8" = 1'-0"



2 BLDG B - CROSS SECTION
SCALE: 1/8" = 1'-0"

SHEET NOTES

NO	DATE	ISSUE / ADDENDUM / REVISION

**PROPOSED SHARON
MIXED-USE
DEVELOPMENT**
19086 LESLIE STREET
EAST GWILLIMBURY ON

SEAL:

SHEET TITLE:
BLDG B - SECTIONS

PROJECT NO:	3414
DRAWN BY:	LO
CHECKED BY:	KD
DATE:	17/09/2020 2:50:17 PM
SCALE:	1/8" = 1'-0"
SHEET:	

A2.2b

THIS DRAWING WAS PREPARED FOR USE ON A SPECIFIC SITE AS NOTED BELOW. CONTEMPORANEOUSLY WITH ITS ISSUE DATE AS SHOWN BELOW, AND IT IS NOT SUITABLE FOR USE ON A DIFFERENT PROJECT SITE OR AT A LATER TIME. USE OF THIS DRAWING FOR REFERENCE OR REPRODUCTION ON ANOTHER PROJECT REQUIRES THE SERVICES OF PROPERLY LICENSED ARCHITECTS AND ENGINEERS. EXAMPLES OF SUCH REUSE ARE: REUSE ON ANOTHER PROJECT; REUSE ON A DIFFERENT PROJECT; REUSE ON ANOTHER PROJECT; REUSE ON ANOTHER PROJECT. THE CONTRACTOR MUST VERIFY AND ACCEPT RESPONSIBILITY FOR ALL DIMENSIONS AND CONDITIONS ON SITE AND MUST NOTIFY ARCHITECTURE INC. OF ANY VARIATIONS FROM THE PROVIDED INFORMATION. ARCHITECTURE INC. IS NOT RESPONSIBLE FOR THE ACCURACY OF ENGINEERING INFORMATION SHOWN ON THIS DRAWING. REFER TO APPLICABLE ENGINEERING DRAWINGS BEFORE STARTING WORK. THIS DRAWING IS NOT TO BE SCALED. ALL ARCHITECTURAL SYMBOLS ARE GRAPHIC REPRESENTATIONS ONLY.

SHEET NOTES

- 1 BRICK VENEER - BRAMPTON BRICK, VALENCIA (RED)
 - 2 BRICK VENEER - BRAMPTON BRICK, VALENCIA (RED)
 - 3 BRICK VENEER - BRAMPTON BRICK, VALENCIA (RED)
 - 4 BLOCK VENEER - BRAMPTON BRICK, PEEL SILVER QUARTZ
 - 5 EIFS - DRYVIT, 113 AMARILLO WHITE
 - 6 RESERVED
 - 7 PRE-FINISHED METAL - VICWEST, 55084 DARK RED
 - 8 PRE-FINISHED METAL - VICWEST, 56072 CHARCOAL
 - 9 PRE-FINISHED METAL - VICWEST, 56072 CHARCOAL
 - 10 PRE-FINISHED METAL - VICWEST, 56161 CAMBRIDGE WHITE
 - 11 RESERVED
 - 12 PAINT FINISH - WHITE (MATCH 56161 CAMBRIDGE WHITE)
 - 13 RESERVED
 - 14 STAIRCASE - STEEL, PAINTED
 - 15 HANDRAIL - STEEL, PAINTED
 - 16 HANDRAIL - POWDER COATED ALUMINUM WITH TEMPERED-LAMINATED GLAZING
 - 17 RESERVED
 - 18 STOREFRONT DOOR GLAZING - SEALED CLEAR GLAZING UNITS FRAME: CLEAR ANODIZED
 - 19 STOREFRONT GLAZING - SEALED CLEAR GLAZING UNITS FRAME: CLEAR ANODIZED
 - 20 MAIN ENTRANCE DOOR (CRU) GLAZING - SEALED CLEAR GLAZING UNITS FRAME: CLEAR ANODIZED
 - 21 SERVICE / EXIT DOORS - HOLLOW METAL (CRU) FINISH: PRE-PAINTED, WITH SMALL VISION PANEL. FRAME: PAINTED
 - 22 OVERHEAD DOOR (CRU) FINISH: PRE-PAINTED FRAME: ALUMINUM
 - 23 MAIN ENTRANCE DOOR (TOWNHOMES) GLAZING - SEALED CLEAR GLAZING UNITS FRAME: POWDER COATED (WHITE)
 - 24 MAIN ENTRANCE DOOR (CONDOMINIUM) GLAZING - SEALED CLEAR GLAZING UNITS FRAME: POWDER COATED (GRAPHITE)
 - 25 ALUMINUM WINDOWS GLAZING - SEALED CLEAR GLAZING UNITS FRAME: POWDER COATED (GRAPHITE)
 - 26 ALUMINUM SLIDING DOORS GLAZING - SEALED CLEAR GLAZING UNITS FRAME: POWDER COATED (BLACK)
 - 27 OVERHEAD DOOR (TOWNHOMES) FINISH: PRE-PAINTED FRAME: ALUMINUM
- | NO | DATE | ISSUE / ADDENDUM / REVISION |
|----|------|-----------------------------|
| | | |



1 D - NORTH ELEVATION
SCALE: 1/8" = 1'-0"



2 D - SOUTH ELEVATION
SCALE: 1/8" = 1'-0"

PROPOSED SHARON MIXED-USE DEVELOPMENT
19086 LESLIE STREET

EAST GWILLIMBURY ON

SEAL:

SHEET TITLE:
BLDG D - ELEVATIONS

PROJECT NO: 3414
DRAWN BY: LO
CHECKED BY: KD
DATE: 2021-02-15 10:47 PM
SCALE: As indicated
SHEET:

A2.4

THIS DRAWING WAS PREPARED FOR USE ON A SPECIFIC SITE AS NOTED BELOW. CONTEMPORANEOUSLY WITH ITS ISSUE DATE AS SHOWN BELOW, AND IT IS NOT SUITABLE FOR USE ON A DIFFERENT PROJECT SITE OR AT A LATER TIME. USE OF THIS DRAWING FOR REFERENCE OR REPRODUCTION ON ANOTHER PROJECT REQUIRES THE SERVICES OF PROPERLY LICENSED ARCHITECTS AND ENGINEERS. EXAMPLE: ON ANOTHER PROJECT REQUIRES THE SERVICES OF PROPERLY LICENSED ARCHITECTS AND ENGINEERS. REPRODUCTION OF THIS DRAWING FOR USE ON ANOTHER PROJECT IS NOT AUTHORIZED AND MAY BE CONTRARY TO THE LAW. THE CONTRACTOR MUST VERIFY AND ACCEPT RESPONSIBILITY FOR ALL DIMENSIONS AND CONDITIONS ON SITE AND MUST NOTIFY ABRARCH ARCHITECTURE INC. OF ANY VARIATIONS FROM THE PROVIDED INFORMATION. ABRARCH ARCHITECTURE INC. IS NOT RESPONSIBLE FOR THE ACCURACY OF ENGINEERING INFORMATION SHOWN ON THIS DRAWING. REFER TO APPLICABLE ENGINEERING DRAWINGS BEFORE STARTING WORK. THIS DRAWING IS NOT TO BE SCALED. ALL ARCHITECTURAL SYMBOLS ARE GRAPHIC REPRESENTATIONS ONLY.

SHEET NOTES

- 1 BRICK VENEER - BRAMPTON BRICK, VALENCIA (RED)
- 2 BRICK VENEER - BRAMPTON BRICK, VALENCIA (RED)
- 3 BRICK VENEER - BRAMPTON BRICK, VALENCIA (RED)
- 4 BLOCK VENEER - BRAMPTON BRICK, PEEL SILVER QUARTZ
- 5 EIFS - DRYVIT, 113 AMARILLO WHITE
- 6 RESERVED
- 7 PRE-FINISHED METAL - VICWEST, 55084 DARK RED
- 8 PRE-FINISHED METAL - VICWEST, 56072 CHARCOAL
- 9 PRE-FINISHED METAL - VICWEST, 56072 CHARCOAL
- 10 PRE-FINISHED METAL - VICWEST, 56161 CAMBRIDGE WHITE
- 11 RESERVED
- 12 PAINT FINISH - WHITE (MATCH 56161 CAMBRIDGE WHITE)
- 13 RESERVED
- 14 STAIRCASE - STEEL PAINTED
- 15 HANDRAIL - STEEL PAINTED
- 16 HANDRAIL - POWDER COATED ALUMINUM WITH TEMPERED-LAMINATED GLAZING
- 17 RESERVED
- 18 STOREFRONT DOOR GLAZING - SEALED CLEAR GLAZING UNITS FRAME: CLEAR ANODIZED
- 19 STOREFRONT GLAZING GLAZING - SEALED CLEAR GLAZING UNITS FRAME: CLEAR ANODIZED
- 20 MAIN ENTRANCE DOOR (CRU) GLAZING - SEALED CLEAR GLAZING UNITS FRAME: CLEAR ANODIZED
- 21 SERVICE / EXIT DOORS - HOLLOW METAL (CRU) FINISH: PAINTED, WITH SMALL VISION PANEL FRAME: PAINTED
- 22 OVERHEAD DOOR (CRU) FINISH: PRE-PAINTEED FRAME: ALUMINUM
- 23 MAIN ENTRANCE DOOR (TOWNHOMES) GLAZING - SEALED CLEAR GLAZING UNITS FRAME: POWDER COATED (WHITE)
- 24 MAIN ENTRANCE DOOR (CONDOMINIUM) GLAZING - SEALED CLEAR GLAZING UNITS FRAME: POWDER COATED (GRAPHITE)
- 25 ALUMINUM WINDOWS GLAZING - SEALED CLEAR GLAZING UNITS FRAME: POWDER COATED (GRAPHITE)
- 26 ALUMINUM SLIDING DOORS GLAZING - SEALED CLEAR GLAZING UNITS FRAME: POWDER COATED (BLACK)
- 27 OVERHEAD DOOR (TOWNHOMES) FINISH: PRE-PAINTEED FRAME: ALUMINUM

NO	DATE	ISSUE/ADDENDUM	REVISION

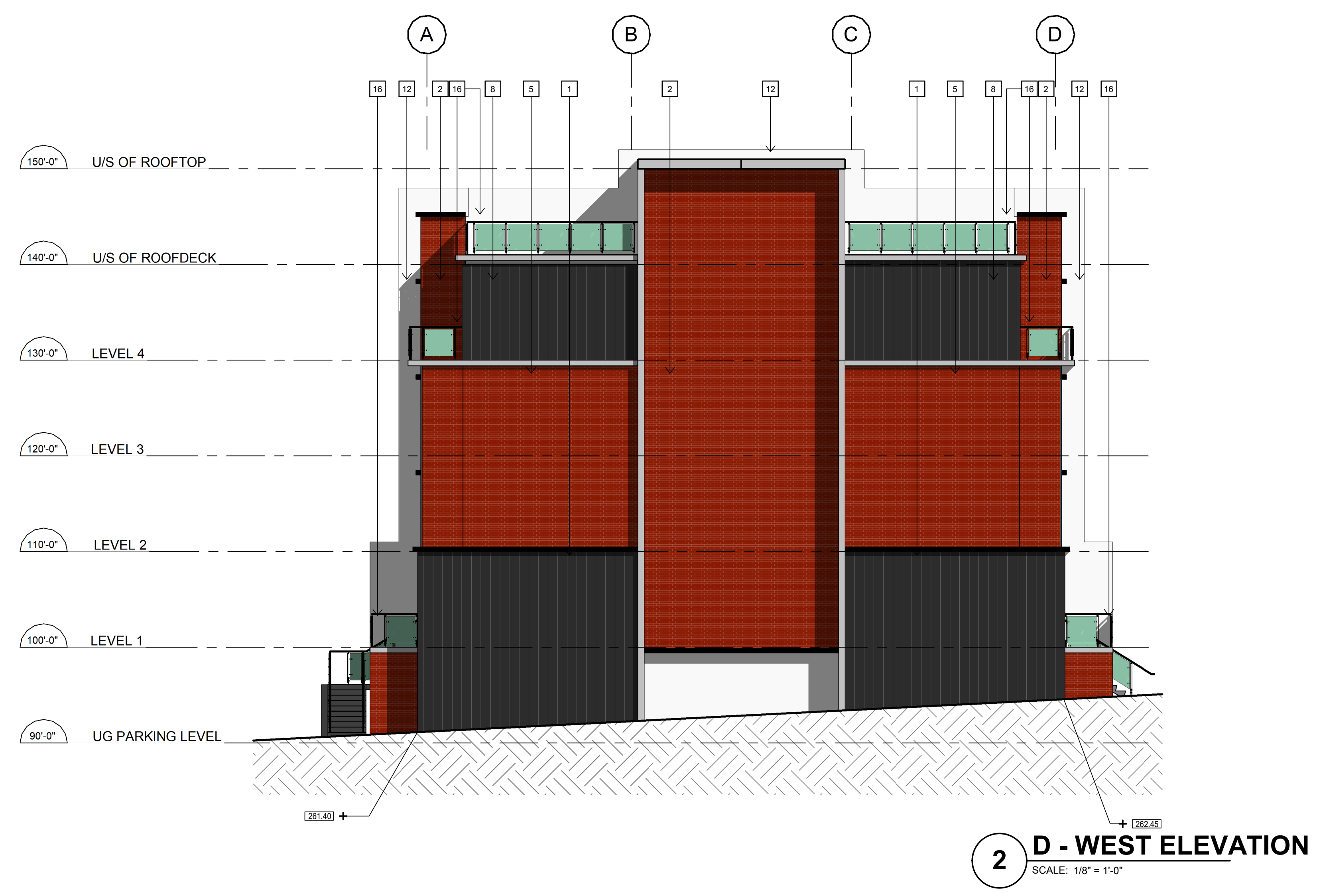
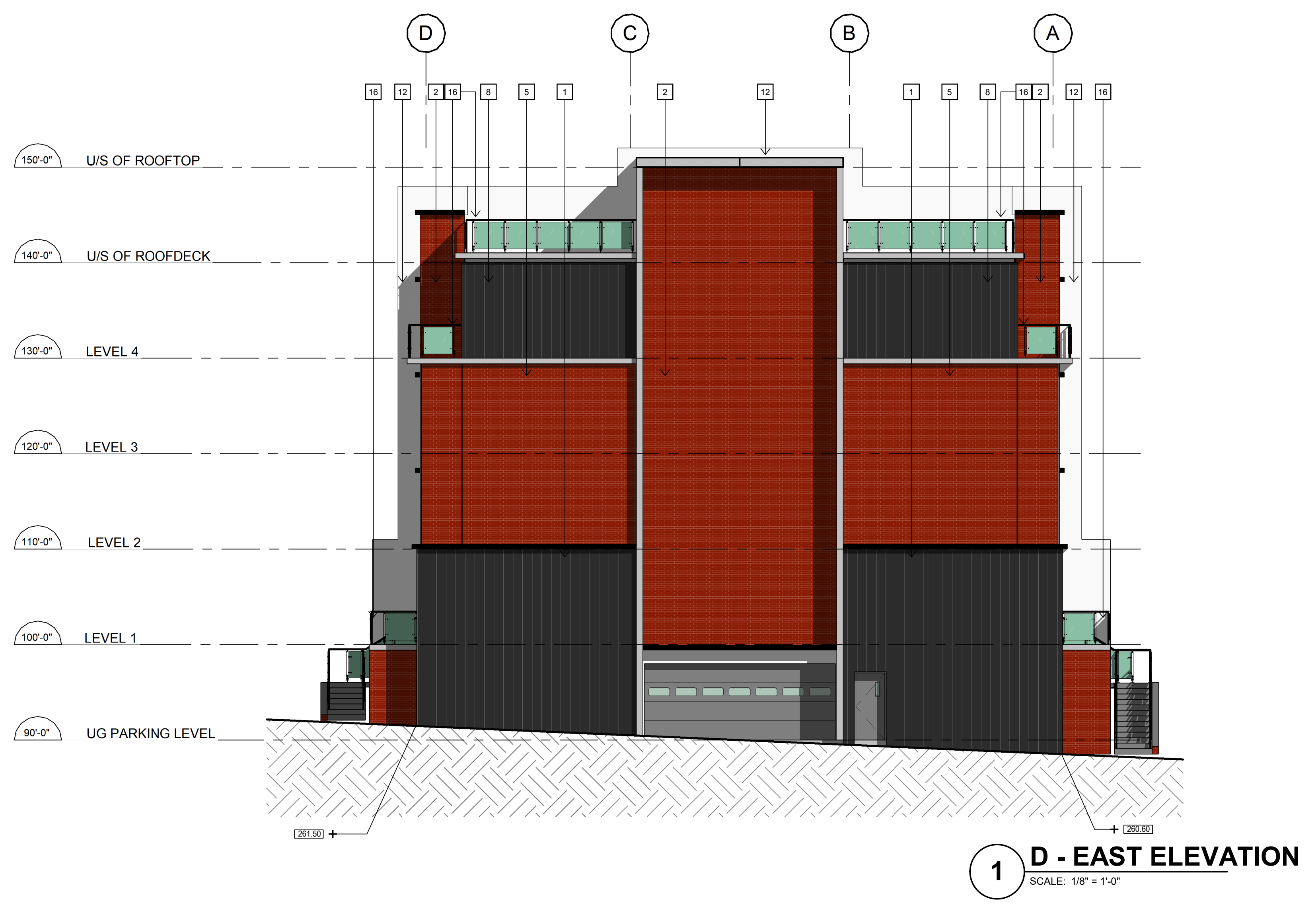
PROPOSED SHARON MIXED-USE DEVELOPMENT
19086 LESLIE STREET

EAST GWILLIMBURY ON

SEAL:

BLDG D - ELEVATIONS

PROJECT NO:	3414
DRAWN BY:	LO
CHECKED BY:	KD
DATE:	2021-02-15 1:11:11 PM
SCALE:	As indicated
SHEET:	A2.4a



2021-02-15 1:11:11 C:\Users\lrb\OneDrive\Documents\3414_East_Gwillimbury_ARCH\2021\01_V1_DR_definitive_elevations.rvt

BUILDINGS C, E, F, H
8 BALCONIES PER FLOOR PER ELEVATION

BUILDINGS D, G, I
10 BALCONIES PER FLOOR PER ELEVATION

THIS DRAWING WAS PREPARED FOR USE ON A SPECIFIC SITE AS NOTED BELOW. CONTINUATION OF ITS USE ON A DIFFERENT PROJECT SITE OR AT A LATER TIME, USE OF THIS DRAWING FOR REFERENCE OR REPRODUCTION ON ANOTHER PROJECT REQUIRES THE SERVICES OF PROPERLY LICENSED ARCHITECTS AND ENGINEERS. THE CONTRACTOR MUST VERIFY AND ACCEPT RESPONSIBILITY FOR ALL DIMENSIONS AND CONDITIONS ON SITE AND MUST NOTIFY ARCHARCH ARCHITECTURE INC. OF ANY VARIATIONS FROM THE PROVIDED INFORMATION. ARCHARCH ARCHITECTURE INC. IS NOT RESPONSIBLE FOR THE ACCURACY OF ENGINEERING INFORMATION SHOWN ON THIS DRAWING. REFER TO APPLICABLE ENGINEERING DRAWINGS BEFORE STARTING WORK. THIS DRAWING IS NOT TO BE SCALED. ALL ARCHITECTURAL SYMBOLS ARE GRAPHIC REPRESENTATIONS ONLY.

SHEET NOTES

- 1 BRICK VENEER - BRAMPTON BRICK, VALENCIA (RED)
- 2 BRICK VENEER - BRAMPTON BRICK, VALENCIA (RED)
- 3 BRICK VENEER - BRAMPTON BRICK, VALENCIA (RED)
- 4 BLOCK VENEER - BRAMPTON BRICK, PEEL SILVER QUARTZ
- 5 EIFS - DRYVIT, 113 AMARILLO WHITE
- 6 RESERVED
- 7 PRE-FINISHED METAL - VIOWEST, 55084 DARK RED
- 8 PRE-FINISHED METAL - VIOWEST, 56072 CHARCOAL
- 9 PRE-FINISHED METAL - VIOWEST, 56161 CAMBRIDGE WHITE
- 10 PRE-FINISHED METAL - VIOWEST, 56161 CAMBRIDGE WHITE
- 11 RESERVED
- 12 PAINT FINISH - WHITE (MATCH 56161 CAMBRIDGE WHITE)
- 13 RESERVED
- 14 STAIRCASE - STEEL PAINTED
- 15 HANDRAIL - STEEL PAINTED
- 16 HANDRAIL - POWDER COATED ALUMINUM WITH TEMPERED-LAMINATED GLAZING
- 17 RESERVED
- 18 STOREFRONT DOOR GLAZING - SEALED CLEAR GLAZING UNITS FRAME - CLEAR ANODIZED
- 19 STOREFRONT GLAZING - SEALED CLEAR GLAZING UNITS FRAME - CLEAR ANODIZED
- 20 MAIN ENTRANCE DOOR (CRU) GLAZING - SEALED CLEAR GLAZING UNITS FRAME - CLEAR ANODIZED
- 21 SERVICE / EXIT DOORS - HOLLOW METAL (CRU) FINISH - PAINTED, WITH SMALL VIGOR PANEL FRAME - PAINTED
- 22 OVERHEAD DOOR (CRU) FINISH - PRE-PAINTED FRAME - ALUMINUM
- 23 MAIN ENTRANCE DOOR (TOWNHOMES) GLAZING - SEALED CLEAR GLAZING UNITS FRAME - POWDER COATED (WHITE)
- 24 MAIN ENTRANCE DOOR (CONDOMINIUM) GLAZING - SEALED CLEAR GLAZING UNITS FRAME - POWDER COATED (GRAPHITE)
- 25 ALUMINUM WINDOWS GLAZING - SEALED CLEAR GLAZING UNITS FRAME - POWDER COATED (GRAPHITE)
- 26 ALUMINUM SLIDING DOORS GLAZING - SEALED CLEAR GLAZING UNITS FRAME - POWDER COATED (BLACK)
- 27 OVERHEAD DOOR (TOWNHOMES) FINISH - PRE-PAINTED FRAME - ALUMINUM

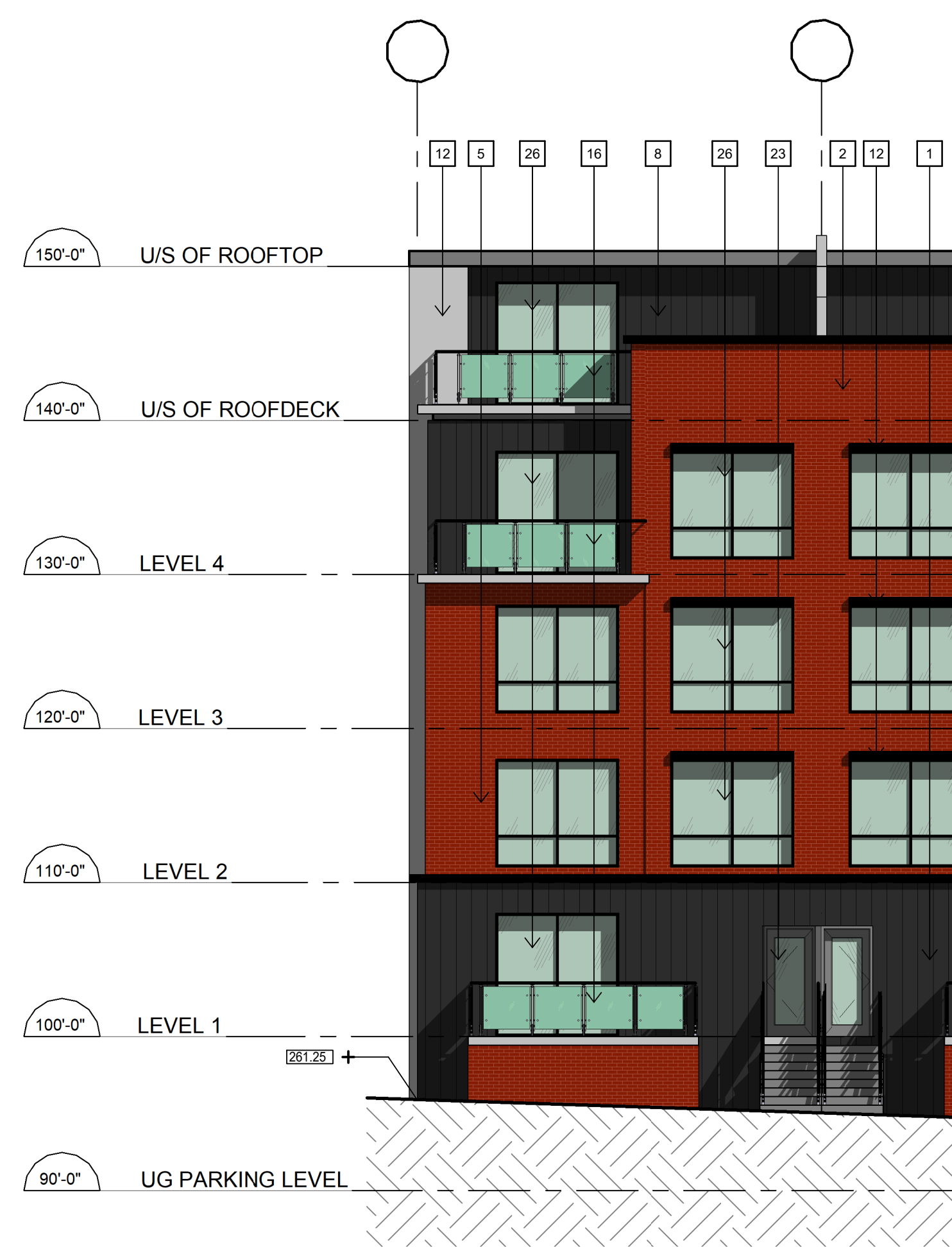
NO	DATE	ISSUE / ADDENDUM / REVISION

PROPOSED SHARON MIXED-USE DEVELOPMENT
19086 LESLIE STREET
EAST GWILLIMBURY ON

SEAL:

SHEET TITLE:
TYP. - ELEVATIONS - BUILDINGS C to I

PROJECT NO:	3414
DRAWN BY:	LO
CHECKED BY:	KD
DATE:	2021-02-15 1:00:33 PM
SCALE:	As indicated
SHEET:	A2.3



1 C - EAST ELEVATION
SCALE: 1/8" = 1'-0"



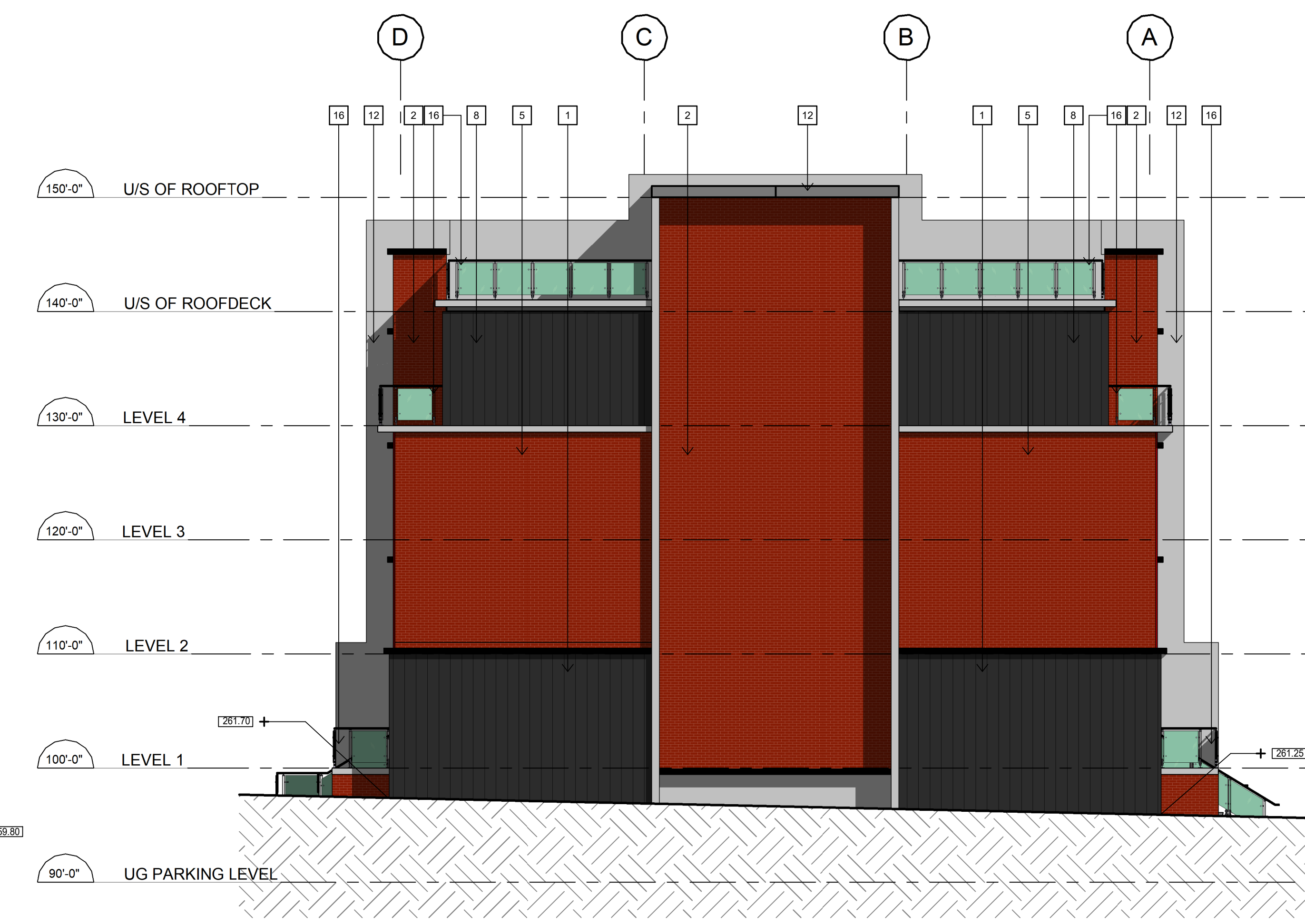
2 C - SOUTH ELEVATION
SCALE: 1/8" = 1'-0"



3 C - WEST ELEVATION
SCALE: 1/8" = 1'-0"



4 C - NORTH ELEVATION
SCALE: 1/8" = 1'-0"

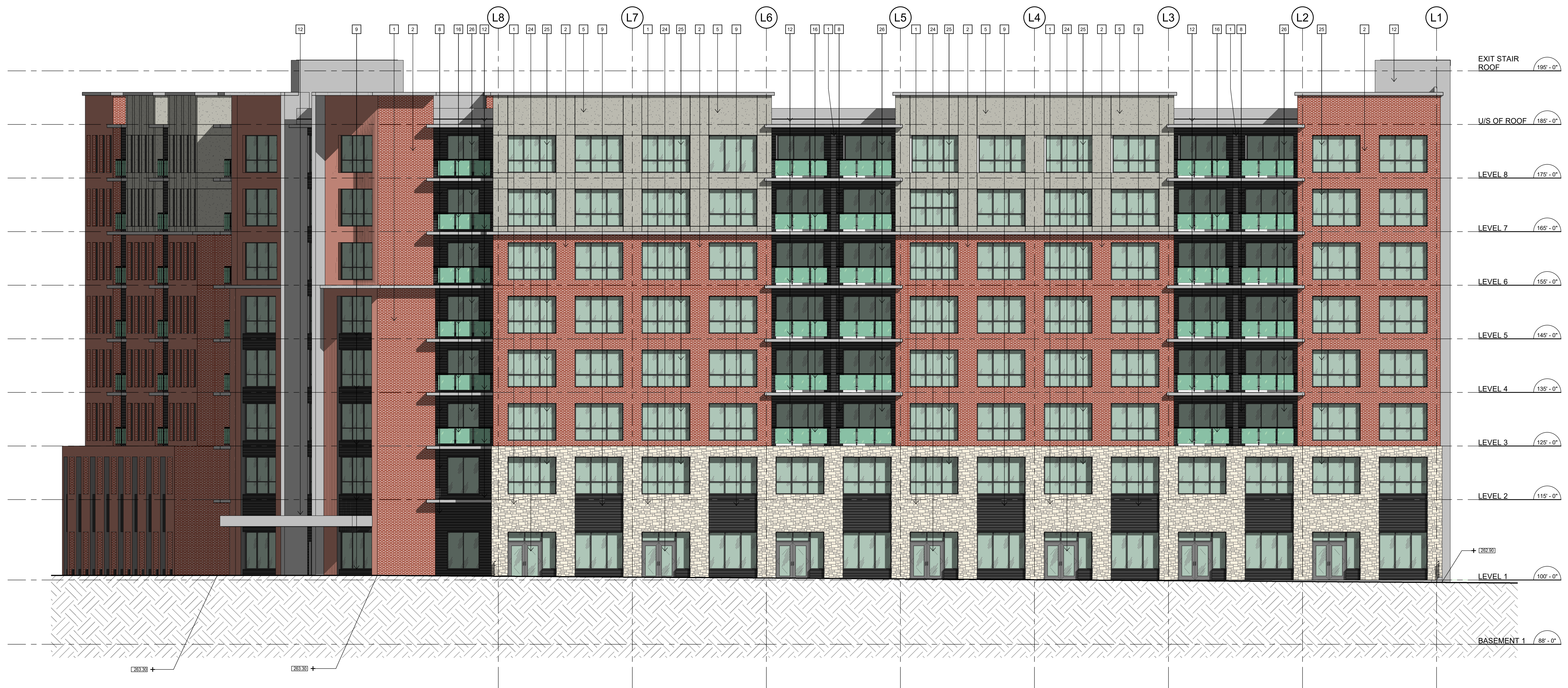


2021-02-15 1:00:33 PM C:\Users\LO\OneDrive\Documents\3414_East_Gwllimbury_ARCH\20210215_19086_Leslie_Street_A2.3.rvt

THIS DRAWING WAS PREPARED FOR USE ON A SPECIFIC SITE AS NOTED BELOW. CONTEMPORANEOUSLY WITH ITS ISSUE DATE AS SHOWN BELOW, AND IT IS NOT SUITABLE FOR USE ON A DIFFERENT PROJECT SITE OR AT A LATER TIME. USE OF THIS DRAWING FOR REFERENCE OR REPRODUCTION ON ANOTHER PROJECT REQUIRES THE SERVICES OF PROPERLY LICENSED ARCHITECTS AND ENGINEERS. THE CONTRACTOR MUST VERIFY AND ACCEPT RESPONSIBILITY FOR ALL DIMENSIONS AND CONDITIONS ON SITE AND MUST NOTIFY ABRARCH ARCHITECTURE INC. OF ANY VARIATIONS FROM THE PROVIDED INFORMATION. ABRARCH ARCHITECTURE INC. IS NOT RESPONSIBLE FOR THE ACCURACY OF ENGINEERING INFORMATION SHOWN ON THIS DRAWING. REFER TO APPLICABLE ENGINEERING DRAWINGS BEFORE STARTING WORK. THIS DRAWING IS NOT TO BE SCALED. ALL ARCHITECTURAL SYMBOLS ARE GRAPHIC REPRESENTATIONS ONLY.

SHEET NOTES

- 1 BRICK VENEER - BRAMPTON BRICK, VALENCIA (RED)
 - 2 BRICK VENEER - BRAMPTON BRICK, VALENCIA (RED)
 - 3 BRICK VENEER - BRAMPTON BRICK, VALENCIA (RED)
 - 4 BLOCK VENEER - BRAMPTON BRICK, PEEL SILVER QUARTZ
 - 5 EIFS - DRYVIT, 113 AMARILLO WHITE
 - 6 RESERVED
 - 7 PRE-FINISHED METAL - VIOWEST, 56084 DARK RED
 - 8 PRE-FINISHED METAL - VIOWEST, 56072 CHARCOAL
 - 9 PRE-FINISHED METAL - VIOWEST, 56072 CHARCOAL
 - 10 BRICK VENEER - BRAMPTON BRICK, VALENCIA (RED)
 - 11 RESERVED
 - 12 PAINT FINISH - WHITE (MATCH 56161 CAMBRIDGE WHITE)
 - 13 RESERVED
 - 14 STAIRCASE - STEEL, PAINTED
 - 15 HANDRAIL - STEEL, PAINTED
 - 16 HANDRAIL - POWDER COATED ALUMINUM WITH TEMPERED-LAMINATED GLAZING
 - 17 RESERVED
 - 18 STOREFRONT DOOR GLAZING - SEALED CLEAR GLAZING UNITS FRAME: CLEAR ANODIZED
 - 19 STOREFRONT GLAZING - SEALED CLEAR GLAZING UNITS FRAME: CLEAR ANODIZED
 - 20 MAIN ENTRANCE DOOR (CRU) GLAZING - SEALED CLEAR GLAZING UNITS FRAME: CLEAR ANODIZED
 - 21 SERVICE / EXIT DOORS - HOLLOW METAL (CRU) FINISH: PRE-PANDED WITH SMALL VISION PANEL FRAME: PAINTED
 - 22 OVERHEAD DOOR (CRU) FINISH: PRE-PANDED FRAME: ALUMINUM
 - 23 MAIN ENTRANCE DOOR (TOWNHOMES) GLAZING - SEALED CLEAR GLAZING UNITS FRAME: POWDER COATED (WHITE)
 - 24 MAIN ENTRANCE DOOR (CONDOMINIUM) GLAZING - SEALED CLEAR GLAZING UNITS FRAME: POWDER COATED (GRAPHITE)
 - 25 ALUMINUM WINDOWS GLAZING - SEALED CLEAR GLAZING UNITS FRAME: POWDER COATED (GRAPHITE)
 - 26 ALUMINUM SLIDING DOORS GLAZING - SEALED CLEAR GLAZING UNITS FRAME: POWDER COATED (BLACK)
 - 27 OVERHEAD DOOR (TOWNHOMES) FINISH: PRE-PANDED FRAME: ALUMINUM
- | NO | DATE | ISSUE / ADDENDUM / REVISION |
|----|------|-----------------------------|
| | | |



1 J - SOUTH ELEVATION
SCALE: 1/8" = 1'-0"

PROPOSED SHARON MIXED-USE DEVELOPMENT
19086 LESLIE STREET

EAST GWILLIMBURY ON

SEAL:

SHEET TITLE:
BLDG J - SOUTH ELEVATION

PROJECT NO:	3414
DRAWN BY:	LO
CHECKED BY:	KD
DATE:	2021-02-22 9:09:56 PM
SCALE:	As indicated
SHEET:	A2.4a

THIS DRAWING WAS PREPARED FOR USE ON A SPECIFIC SITE AS NOTED BELOW. CONTEMPORANEOUSLY WITH ITS ISSUE DATE AS SHOWN BELOW, AND IT IS NOT SUITABLE FOR USE ON A DIFFERENT PROJECT SITE OR AT A LATER TIME. USE OF THIS DRAWING FOR REFERENCE OR REPRODUCTION ON ANOTHER PROJECT REQUIRES THE SERVICES OF PROPERLY LICENSED ARCHITECTS AND ENGINEERS. EXAMPLE: ON ANOTHER PROJECT REQUIRES THE SERVICES OF PROPERLY LICENSED ARCHITECTS AND ENGINEERS. REPRODUCTION OF THIS DRAWING FOR USE ON ANOTHER PROJECT IS NOT AUTHORIZED AND MAY BE CONSIDERED TO BE A VIOLATION OF THE ARCHITECTURAL ACT. THE CONTRACTOR MUST VERIFY AND ACCEPT RESPONSIBILITY FOR ALL DIMENSIONS AND CONDITIONS ON SITE AND MUST NOTIFY ARCHITECTURE INC. OF ANY VARIATIONS FROM THE PROVIDED INFORMATION. ARCHITECTURE INC. IS NOT RESPONSIBLE FOR THE ACCURACY OF ENGINEERING INFORMATION SHOWN ON THIS DRAWING. REFER TO APPLICABLE ENGINEERING DRAWINGS BEFORE STARTING WORK. THIS DRAWING IS NOT TO BE SCALED. ALL ARCHITECTURAL SYMBOLS ARE GRAPHIC REPRESENTATIONS ONLY.

SHEET NOTES

- 1 BRICK VENEER - BRAMPTON BRICK, VALENCIA (RED)
- 2 BRICK VENEER - BRAMPTON BRICK, VALENCIA (RED)
- 3 BRICK VENEER - BRAMPTON BRICK, VALENCIA (RED)
- 4 BLOCK VENEER - BRAMPTON BRICK, PEEL SILVER QUARTZ
- 5 EPS - DRYVIT, 113 AMARILLO WHITE
- 6 RESERVED
- 7 PRE-FINISHED METAL - VICWEST, 55084 DARK RED
- 8 PRE-FINISHED METAL - VICWEST, 56072 CHARCOAL
- 9 PRE-FINISHED METAL - VICWEST, 56072 CHARCOAL
- 10 BRICK VENEER - BRAMPTON BRICK, VALENCIA (RED)
- 11 RESERVED
- 12 PAINT FINISH - WHITE (MATCH SH6161 CAMBRIDGE WHITE)
- 13 RESERVED
- 14 STAIRCASE - STEEL, PAINTED
- 15 HANDRAIL - STEEL, PAINTED
- 16 HANDRAIL - POWDER COATED ALUMINUM, WITH TEMPERED-LAMINATED GLAZING
- 17 RESERVED
- 18 STOREFRONT DOOR GLAZING - SEALED CLEAR GLAZING UNITS FRAME: CLEAR ANODIZED
- 19 STOREFRONT GLAZING - SEALED CLEAR GLAZING UNITS FRAME: CLEAR ANODIZED
- 20 MAIN ENTRANCE DOOR (CRU) GLAZING - SEALED CLEAR GLAZING UNITS FRAME: CLEAR ANODIZED
- 21 SERVICE / EXIT DOORS - HOLLOW METAL (CRU) FINISH: PRE-PAINTED, WITH SMALL VISOR PANEL, FRAME: PAINTED
- 22 OVERHEAD DOOR (CRU) FINISH: PRE-PAINTED, FRAME: ALUMINUM
- 23 MAIN ENTRANCE DOOR (TOWNHOMES) GLAZING - SEALED CLEAR GLAZING UNITS FRAME: POWDER COATED (WHITE)
- 24 MAIN ENTRANCE DOOR (CONDOMINIUM) GLAZING - SEALED CLEAR GLAZING UNITS FRAME: POWDER COATED (GRAPHITE)
- 25 ALUMINUM WINDOWS GLAZING - SEALED CLEAR GLAZING UNITS FRAME: POWDER COATED (GRAPHITE)
- 26 ALUMINUM SLIDING DOORS GLAZING - SEALED CLEAR GLAZING UNITS FRAME: POWDER COATED (BLACK)
- 27 OVERHEAD DOOR (TOWNHOMES) FINISH: PRE-PAINTED, FRAME: ALUMINUM

NO	DATE	ISSUE / ADDENDUM / REVISION

PROPOSED SHARON MIXED-USE DEVELOPMENT
19086 LESLIE STREET
EAST GWILLIMBURY ON



J - WEST ELEVATION
SCALE: 1/8" = 1'-0"

SEAL:

SHEET TITLE:
BLDG J - WEST ELEVATION

PROJECT NO: 3414
DRAWN BY: LO
CHECKED BY: KD
DATE: 2021-02-22 9:18:50 PM
SCALE: As indicated
SHEET:

A2.4b

THIS DRAWING WAS PREPARED FOR USE ON A SPECIFIC SITE AS NOTED BELOW. CONTINGENT UPON THE DATE OF ITS ISSUE DATE AS SHOWN BELOW. AND IT IS NOT SUITABLE FOR USE ON A DIFFERENT PROJECT SITE OR AT A LATER TIME. USE OF THIS DRAWING FOR REFERENCE OR REPRODUCTION ON ANOTHER PROJECT REQUIRES THE SERVICES OF PROPERLY LICENSED ARCHITECTS AND ENGINEERS. THE CONTRACTOR MUST VERIFY AND ACCEPT RESPONSIBILITY FOR ALL DIMENSIONS AND CONDITIONS ON SITE AND MUST NOTIFY ARCHITECTURE INC. OF ANY VARIATIONS FROM THE PROVIDED INFORMATION. ARCHITECTURE INC. IS NOT RESPONSIBLE FOR THE ACCURACY OF ENGINEERING INFORMATION SHOWN ON THIS DRAWING. REFER TO APPLICABLE ENGINEERING DRAWINGS BEFORE STARTING WORK. THIS DRAWING IS NOT TO BE SCALED. ALL ARCHITECTURAL SYMBOLS ARE GRAPHIC REPRESENTATIONS ONLY.

SHEET NOTES

- 1 BRICK VENEER - BRAMPTON BRICK, VALENCIA (RED)
- 2 BRICK VENEER - BRAMPTON BRICK, VALENCIA (RED)
- 3 BRICK VENEER - BRAMPTON BRICK, VALENCIA (RED)
- 4 BLOCK VENEER - BRAMPTON BRICK, PEEL SILVER QUARTZ
- 5 EIFS - DRYVIT, 113 AMARILLO WHITE
- 6 RESERVED
- 7 PRE-FINISHED METAL - VICWEST, 56084 DARK RED
- 8 PRE-FINISHED METAL - VICWEST, 56072 CHARCOAL
- 9 PRE-FINISHED METAL - VICWEST, 56072 CHARCOAL
- 10 BRICK VENEER - BRAMPTON BRICK, VALENCIA (RED)
- 11 RESERVED
- 12 PAINT FINISH - WHITE (MATCH 56161 CAMBRIDGE WHITE)
- 13 RESERVED
- 14 STAIRCASE - STEEL PAINTED
- 15 HANDRAIL - STEEL PAINTED
- 16 HANDRAIL - POWDER COATED ALUMINUM WITH TEMPERED-LAMINATED GLAZING
- 17 RESERVED
- 18 STOREFRONT DOOR GLAZING - SEALED CLEAR GLAZING UNITS FRAME: CLEAR ANODIZED
- 19 STOREFRONT GLAZING - SEALED CLEAR GLAZING UNITS FRAME: CLEAR ANODIZED
- 20 MAIN ENTRANCE DOOR (CRU) GLAZING: SEALED CLEAR GLAZING UNITS FRAME: CLEAR ANODIZED
- 21 SERVICE / EXIT DOORS - HOLLOW METAL (CRU) FINISH: PAINTED, WITH SMALL VISION PANEL. FRAME: PAINTED
- 22 OVERHEAD DOOR (CRU) FINISH: PRE-PAINTED FRAME: ALUMINUM
- 23 MAIN ENTRANCE DOOR (TOWNHOMES) GLAZING: SEALED CLEAR GLAZING UNITS FRAME: POWDER COATED (WHITE)
- 24 MAIN ENTRANCE DOOR (CONDOMINIUM) GLAZING: SEALED CLEAR GLAZING UNITS FRAME: POWDER COATED (GRAPHITE)
- 25 ALUMINUM WINDOWS GLAZING: SEALED CLEAR GLAZING UNITS FRAME: POWDER COATED (GRAPHITE)
- 26 ALUMINUM SLIDING DOORS GLAZING: SEALED CLEAR GLAZING UNITS FRAME: POWDER COATED (BLACK)
- 27 OVERHEAD DOOR (TOWNHOMES) FINISH: PRE-PAINTED FRAME: ALUMINUM

NO	DATE	ISSUE / ADDENDUM / REVISION

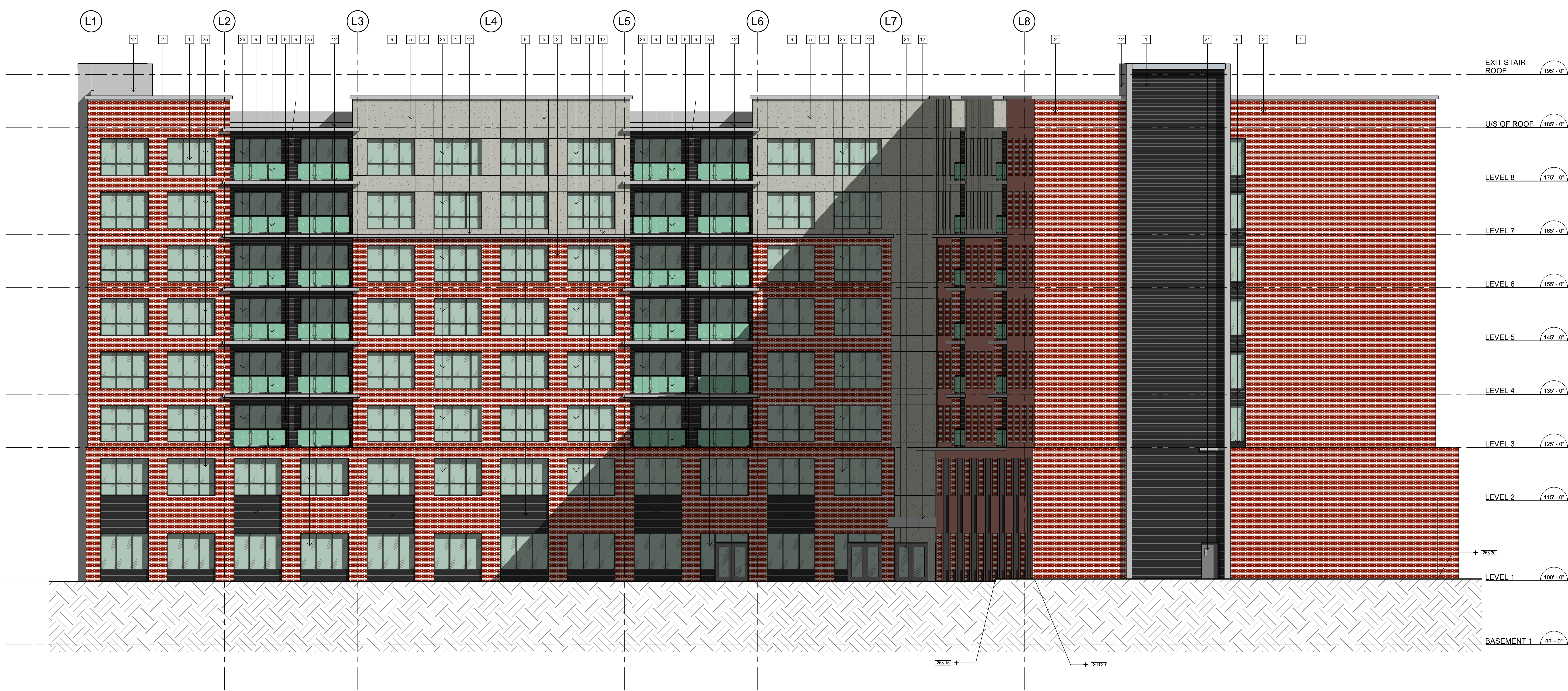
PROPOSED SHARON MIXED-USE DEVELOPMENT
19086 LESLIE STREET

EAST GWILLIMBURY ON

SEAL:

BLDG J - NORTH ELEVATION

PROJECT NO:	3414
DRAWN BY:	LO
CHECKED BY:	KD
DATE:	2021-02-22 9:23:49 PM
SCALE:	As indicated
SHEET:	A2.4c



1 J - NORTH ELEVATION
A2.7 1/8" = 1'-0"

2021-02-22 9:23:49 C:\Users\LO\Documents\3414_East_Gwillimbury_ARCH\2021\01_L0_definitive_elevations.rvt

THIS DRAWING WAS PREPARED FOR USE ON A SPECIFIC SITE AS NOTED BELOW. CONTEMPORANEOUSLY WITH ITS ISSUE DATE AS SHOWN BELOW, AND IT IS NOT SUITABLE FOR USE ON A DIFFERENT PROJECT SITE OR AT A LATER TIME. USE OF THIS DRAWING FOR REFERENCE OR REPRODUCTION ON ANOTHER PROJECT REQUIRES THE SERVICES OF PROPERLY LICENSED ARCHITECTS AND ENGINEERS. CONFORMITY TO THE LAW: THE CONTRACTOR MUST VERIFY AND ACCEPT RESPONSIBILITY FOR ALL DIMENSIONS AND CONDITIONS ON SITE AND MUST NOTIFY ABRARCH ARCHITECTURE INC. OF ANY VARIATIONS FROM THE PROVIDED INFORMATION. ABRARCH ARCHITECTURE INC. IS NOT RESPONSIBLE FOR THE ACCURACY OF ENGINEERING INFORMATION SHOWN ON THIS DRAWING. REFER TO APPLICABLE ENGINEERING DRAWINGS BEFORE STARTING WORK. THIS DRAWING IS NOT TO BE SCALED. ALL ARCHITECTURAL SYMBOLS ARE GRAPHIC REPRESENTATIONS ONLY.

SHEET NOTES

- 1 BRICK VENEER - BRAMPTON BRICK, VALENCIA (RED)
 - 2 BRICK VENEER - BRAMPTON BRICK, VALENCIA (RED)
 - 3 BRICK VENEER - BRAMPTON BRICK, VALENCIA (RED)
 - 4 BLOCK VENEER - BRAMPTON BRICK, PEEL SILVER QUARTZ
 - 5 EIFS - DRYVIT, 113 AMARILLO WHITE
 - 6 RESERVED
 - 7 PRE-FINISHED METAL - VIOWEST, 56084 DARK RED
 - 8 PRE-FINISHED METAL - VIOWEST, 56072 CHARCOAL
 - 9 PRE-FINISHED METAL - VIOWEST, 56072 CHARCOAL
 - 10 BRICK VENEER - BRAMPTON BRICK, VALENCIA (RED)
 - 11 RESERVED
 - 12 PAINT FINISH - WHITE (MATCH 56161 CAMBRIDGE WHITE)
 - 13 RESERVED
 - 14 STAIRCASE - STEEL, PAINTED
 - 15 HANDRAIL - STEEL, PAINTED
 - 16 HANDRAIL - POWDER COATED ALUMINUM WITH TEMPERED-LAMINATED GLAZING
 - 17 RESERVED
 - 18 STOREFRONT DOOR GLAZING - SEALED CLEAR GLAZING UNITS FRAME: CLEAR ANODIZED
 - 19 STOREFRONT GLAZING - SEALED CLEAR GLAZING UNITS FRAME: CLEAR ANODIZED
 - 20 MAIN ENTRANCE DOOR (CRU) GLAZING - SEALED CLEAR GLAZING UNITS FRAME: CLEAR ANODIZED
 - 21 SERVICE / EXIT DOORS - HOLLOW METAL (CRU) FINISH: PRE-PAINTED, WITH SMALL VISION PANEL. FRAME: PAINTED
 - 22 OVERHEAD DOOR (CRU) FINISH: PRE-PAINTED FRAME: ALUMINUM
 - 23 MAIN ENTRANCE DOOR (TOWNHOMES) GLAZING - SEALED CLEAR GLAZING UNITS FRAME: POWDER COATED (WHITE)
 - 24 MAIN ENTRANCE DOOR (CONDOMINIUM) GLAZING - SEALED CLEAR GLAZING UNITS FRAME: POWDER COATED (GRAPHITE)
 - 25 ALUMINUM WINDOWS GLAZING - SEALED CLEAR GLAZING UNITS FRAME: POWDER COATED (GRAPHITE)
 - 26 ALUMINUM SLIDING DOORS GLAZING - SEALED CLEAR GLAZING UNITS FRAME: POWDER COATED (BLACK) FINISH: PRE-PAINTED
 - 27 OVERHEAD DOOR (TOWNHOMES) FINISH: PRE-PAINTED FRAME: ALUMINUM
- | NO | DATE | ISSUE / ADDENDUM / REVISION |
|----|------|-----------------------------|
| | | |

PROPOSED SHARON MIXED-USE DEVELOPMENT
19086 LESLIE STREET
EAST GWILLIMBURY ON

1 J - EAST ELEVATION
SCALE: 1/8" = 1'-0"

SHEET TITLE:
BLDG J - EAST ELEVATION

PROJECT NO:	3414
DRAWN BY:	LO
CHECKED BY:	KD
DATE:	2021-02-22 9:28:04 PM
SCALE:	As indicated
SHEET:	A2.4d



2021-02-22 9:28:04
C:\Users\BRI\OneDrive\Documents\3414_East_Gwillimbury_ARCH\2021\01_LR_definitive_elev\STN.rvt