

PAVING SCHEDULE & LEGEND	
PAVERS SUPPLIED BY OAKS OR APPROVED EQUAL.	
NOTE: FINAL COLOUR SELECTION FOR PAVERS TO BE DONE ON SITE FROM SAMPLES BY LANDSCAPE ARCHITECT.	
LEGEND	
TYPE: (PAVE 'A')	BUILDING ENTRANCES
	MODEL: RIDGEFIELD PLUS PATTERN: PATTERN C RUNNING BOND SIZE: 3 STONE LARGE COMBO BUNDLE COLOUR: CHAMPAGNE
TYPE: (PAVE 'B')	AMENITY AREAS
	FIELD MODEL: RIDGEFIELD SMOOTH PATTERN: PATTERN C RUNNING BOND SIZE: 3 STONE LARGE COMBO BUNDLE COLOUR: CHAMPAGNE
BANDING MODEL: RIDGEFIELD SMOOTH PATTERN: SAILOR COURSE SIZE: 200X300MMX70MM COLOUR: ONYX	

GENERAL NOTES

- VERIFY ALL DIMENSIONS.
- DO NOT SCALE DRAWINGS.
- REPORT ANY DISCREPANCIES, DISCOVERED ERRORS, OR OMISSIONS TO THE LANDSCAPE ARCHITECT BEFORE PROCEEDING.
- IT IS ADVISED THAT CONTRACTORS CONTACT THE LANDSCAPE ARCHITECT PRIOR TO CONSTRUCTION TO ENSURE THE USE OF THE LATEST REVISED DRAWINGS.
- DRAWINGS AND SPECIFICATIONS ARE THE PROPERTY OF THE LANDSCAPE ARCHITECT.

KEY MAP

LEGEND:

- PROPERTY LINE
- CHAINLINK FENCE
- DECORATIVE METAL FENCE
- MASONRY COLUMN
- EXISTING TREE TO BE PRESERVED
- PROPOSED DECIDUOUS TREE
- SODDING
- PROPOSED SHRUBS
- PROPOSED CONIFEROUS SHRUBS
- PROPOSED PERENNIALS & GRASSES
- COMPENSATION TREE PLANTING
- CONCRETE SIDEWALK
- CONCRETE PLATFORM WITH STEPS
- UNIT PAVING-ENTRANCE
- UNIT PAVING-AMENITY AREA
- LANDSCAPE FURNITURE
- STREETLIGHT POLE
- BOLLARD LIGHT
- HYDRO ONE TRANSFORMER
- WALL PACK LED LIGHTS

DRAWING LIST

No.	DATE.	REVISION.	BY.
11	APR 01, 2025	ISSUED FOR SPA RESUBMISSION	B.B.
10	MAR 11th, 2025	ISSUED FOR SPA RESUBMISSION	B.B.
9	APR 30th, 2024	UPDATED CLIENT NAME AND 1ST NUMBER	B.B.
8	APR 15th, 2024	ISSUED FOR SPA RESUBMISSION	B.B.
7	FEB 15, 2024	ISSUED FOR SPA	B.B.
6	FEB 14, 2024	ISSUED FOR COORDINATION AND REVIEW	B.B.
5	FEB 09, 2024	ISSUED FOR COORDINATION AND REVIEW	B.B.
4	SEPT 14, 2021	ISSUED FOR SUBMISSION	B.B.
3	AUG. 25, 2021	ISSUED FOR SUBMISSION	B.B.
2	AUG. 20, 2021	ISSUED FOR COORDINATION AND REVIEW	A.S.
1	AUG. 10, 2021	ISSUED FOR COORDINATION AND REVIEW	N.S.

It is the responsibility of the Contractor and/or Owner to ensure that the drawings with the latest revisions are used for construction.

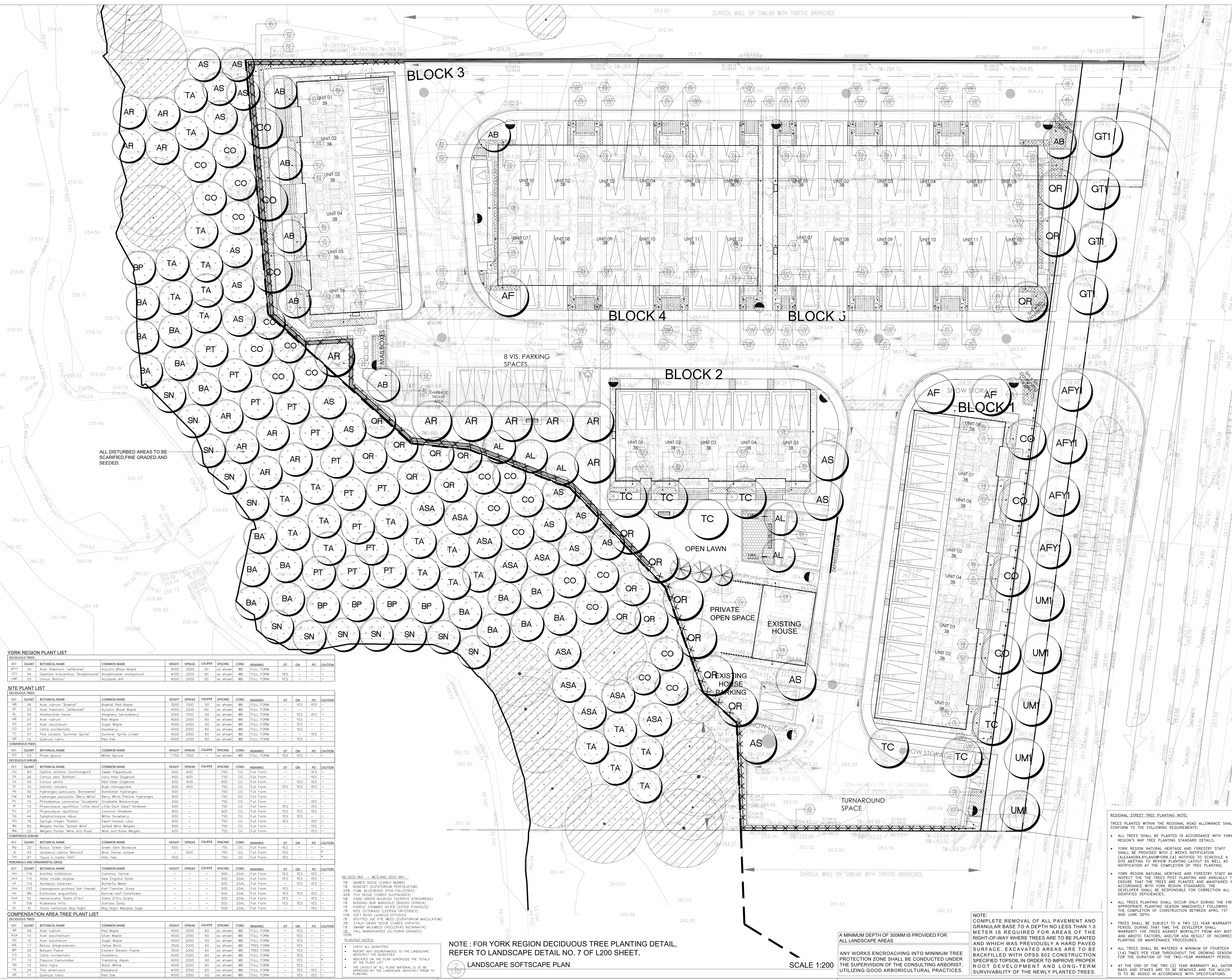
SBK
STRYBOS BARRON KING
LANDSCAPE ARCHITECTURE

3770 HURONTARIO STREET, SUITE 320
MISSISSAUGA, ONTARIO, L4R 3G5
T: 416.695.4949 F: 905.712.3101
WWW.STRYBOS.COM

PROJECT: THE ACORN DEVELOPMENT CORPORATION
BLOCK 23 - 19T 14001, STACKED TOWNHOUSES
EAST GWILLIMBURY, ONTARIO

DRAWING TITLE: LANDSCAPE HARDSCAPE PLAN

SCALE: 1:200	PROJECT No. 5647
DATE: JULY 2021	DRAWING No. L100
DRAWN BY: K.K.	
CHECKED BY: B.B.	



YORK REGION PLANT LIST													
DECIDUOUS TREES													
KEY	QUANT	BOTANICAL NAME	COMMON NAME	HEIGHT	SPREAD	CALIPER	SPACING	COND.	REMARKS	DT	DN	PO	CAUTION
AFY1	04	Acer tremuloides 'Jefferson'	Autumn Blaze Maple	4000	2000	50	(as shown)	WB	FULL FORM	YES	—	—	—
GT1	04	Gleditsia triacanthos 'Shademaster'	Shademaster Honeylocust	4000	2000	50	(as shown)	WB	FULL FORM	YES	—	—	—
UM1	05	Ulmus 'Morton'	Accolade elm	4000	2000	50	(as shown)	WB	FULL FORM	YES	—	—	—
SITE PLANT LIST													
DECIDUOUS TREES													
KEY	QUANT	BOTANICAL NAME	COMMON NAME	HEIGHT	SPREAD	CALIPER	SPACING	COND.	REMARKS	DT	DN	PO	CAUTION
AB	06	Acer rubrum 'Beaumont'	Beaumont Red Maple	3000	1500	50	(as shown)	WB	FULL FORM	—	YES	YES	—
AF	03	Acer freemanii 'Jefferson'	Autumn Blaze Maple	4000	2000	60	(as shown)	WB	FULL FORM	—	YES	YES	—
AL	05	American Elm	Allegany Serviceberry	3000	1500	50	(as shown)	WB	FULL FORM	—	YES	YES	—
AR	07	Acer rubrum	Red Maple	4000	2000	60	(as shown)	WB	FULL FORM	—	YES	—	—
AS	04	Acer saccharum	Sugar Maple	4000	2000	60	(as shown)	WB	FULL FORM	—	YES	—	—
CO	07	Celtis occidentalis	Hackberry	4000	2000	60	(as shown)	WB	FULL FORM	—	YES	—	—
TC	07	Tilia cordata 'Summer Sprite'	Summer Sprite Linden	4000	2000	60	(as shown)	WB	FULL FORM	—	YES	—	—
QR	10	Quercus rubra	Red Oak	4000	2000	60	(as shown)	WB	FULL FORM	—	YES	—	—
CONIFEROUS TREES													
KEY	QUANT	BOTANICAL NAME	COMMON NAME	HEIGHT	SPREAD	CALIPER	SPACING	COND.	REMARKS	DT	DN	PO	CAUTION
PC	03	Picea glauca	White Spruce	1750	1500	—	(as shown)	WB	FULL FORM	YES	—	—	—
DECIDUOUS SHRUBS													
KEY	QUANT	BOTANICAL NAME	COMMON NAME	HEIGHT	SPREAD	CALIPER	SPACING	COND.	REMARKS	DT	DN	PO	CAUTION
CG	83	Ceanothus divaricata 'Hummelbird'	Sweet Pepperbush	600	600	750	CG	Full Form	—	—	YES	—	—
CH	26	Cornus alba 'Balthus'	Ivory Halo Dogwood	600	600	750	CG	Full Form	—	—	YES	—	—
CS	45	Cornus sericea	Red Osier Dogwood	600	600	900	CG	Full Form	—	—	YES	YES	—
DI	32	Dierella lonicera	Burnt Honeylocust	600	600	750	CG	Full Form	—	—	YES	YES	—
HY	30	Hydrangea paniculata 'Bombarht'	Bombardier Hydrangea	600	—	750	CG	Full Form	—	—	—	—	—
HW	83	Hydrangea paniculata 'Berry White'	Berry White Panicle Hydrangea	600	—	750	CG	Full Form	—	—	—	—	—
PL	10	Philadelphus coronarius 'Snowflake'	Snowflake Mockorange	600	—	750	CG	Full Form	—	—	YES	—	—
PI	13	Physocarpus opulifolius 'Little Dazz'	Little Dazz Dwarf Ninebark	600	—	750	CG	Full Form	—	—	YES	—	—
PA	07	Physocarpus opulifolius	Common Ninebark	600	—	900	CG	Full Form	—	—	YES	YES	—
SW	44	Symphoricarpos albus	White Snowberry	600	—	750	CG	Full Form	—	—	YES	YES	—
SP	76	Spiraea meyeri 'Robur'	Meier's Korean Spirea	600	—	750	CG	Full Form	—	—	YES	YES	—
WE	83	Weigelia florida 'Spilled Wine'	Spilled Wine Weigelia	600	—	750	CG	Full Form	—	—	YES	—	—
WR	25	Weigelia florida 'Wine and Rose'	Wine and Rose Weigelia	600	—	750	CG	Full Form	—	—	YES	—	—
CONIFEROUS SHRUBS													
KEY	QUANT	BOTANICAL NAME	COMMON NAME	HEIGHT	SPREAD	CALIPER	SPACING	COND.	REMARKS	DT	DN	PO	CAUTION
Bq	25	Buxus 'Green Gem'	Green Gem Boxwood	600	—	750	CG	Full Form	—	—	YES	—	—
JB	43	Juniperus horizontalis 'Minors'	Minor Juniper	600	—	750	CG	Full Form	—	—	YES	—	—
TR	97	Taxus x media 'Milli'	Milli Yew	600	—	750	CG	Full Form	—	—	YES	—	*
PERENNIALS AND ORNAMENTAL GRASS													
KEY	QUANT	BOTANICAL NAME	COMMON NAME	HEIGHT	SPREAD	CALIPER	SPACING	COND.	REMARKS	DT	DN	PO	CAUTION
am	116	Achillea millefolium	Common Yarrow	—	—	500	2GAL	Full Form	—	YES	YES	YES	—
an	110	Aster rooseae-anglicus	New England Aster	—	—	500	2GAL	Full Form	—	YES	YES	YES	—
at	119	Asclepias tuberosa	Butterfly Weed	—	—	500	2GAL	Full Form	—	YES	YES	YES	—
coo	153	Cornostachys australis 'Van Eesteren'	Karl Foerster Grass	—	—	500	2GAL	Full Form	—	YES	YES	YES	—
ea	88	Echinacea angustifolia	Narrow-leaf Coneflower	—	—	500	2GAL	Full Form	—	YES	YES	YES	—
hes	52	Hemerocallis 'Stella D'Oro'	Stella D'Oro Daylily	—	—	500	2GAL	Full Form	—	YES	YES	YES	—
rh	106	Rudbeckia hirta	Glossy Daisy	—	—	500	2GAL	Full Form	—	YES	YES	YES	—
sa	12	Salix nemerosa May Night	May Night Meadow Sage	—	—	500	2GAL	Full Form	—	YES	YES	YES	—
COMPENSATION AREA TREE PLANT LIST													
DECIDUOUS TREES													
KEY	QUANT	BOTANICAL NAME	COMMON NAME	HEIGHT	SPREAD	CALIPER	SPACING	COND.	REMARKS	DT	DN	PO	CAUTION
AR	09	Acer rubrum	Red Maple	4000	2000	60	(as shown)	WB	FULL FORM	—	YES	—	—
AS	10	Acer saccharum	Sugar Maple	4000	2000	60	(as shown)	WB	FULL FORM	—	YES	—	—
BA	17	Betula alleghaniensis	Yellow Birch	4000	2000	60	(as shown)	WB	FULL FORM	—	YES	—	—
BP	05	Betula papyrifera	Eastern Betula Paper Birch	3500	2000	60	(as shown)	WB	FULL FORM	—	YES	—	—
CO	21	Celtis occidentalis	Hackberry	4000	2000	60	(as shown)	WB	FULL FORM	—	YES	—	—
TA	13	Taxodium distichum	Swamp Cypress	4000	2000	60	(as shown)	WB	FULL FORM	—	YES	—	—
SN	12	Salix nigra	Black Willow	4000	2000	60	(as shown)	WB	FULL FORM	—	YES	—	—
QR	11	Quercus rubra	Red Oak	4000	2000	60	(as shown)	WB	FULL FORM	—	YES	—	—

SEED MIX — WETLAND SEED MIX
1% BEBB'S SEDGE (CAREX BEBBII)
1% BONESET (EUPATORIUM PERFOLIATUM)
25% FINE BLUEGRASS (POA FLAVESCENS)
40% FOX SEDGE (CAREX VULPINODEA)
2% DARK GREEN BLUEGRASS (SCORPUS ATROVIRENS)
1% NODDING BUR MARIGOLD (BIENERS CERNUA)
2% PURPLE STEWED ASTER (ASTER PINOCEUS)
7% RICE OUTGRASS (LEERSIA ORYZOIDES)
10% SOFT RUSH (JUNCUS EFFUSUS)
12% SPOTTED JOE-PYE WED (SPATHELOPHORUM MACULATUM)
2% STALK-GRAIN SEDGE (CAREX STIPATA)
1% SWAMP MILKWEED (ASCLEPIAS INCARNATA)
1% TALL MANNAGRASS (GLYCERIA GRANDIS)
10% PLANTING NOTES:
• CHECK ALL QUANTITIES
• REPORT ANY DISCREPANCIES TO THE LANDSCAPE ARCHITECT THE QUANTITIES
• INDICATED ON THE PLAN SUPERSEDES THE TOTALS OF THE PLANT LIST
• THE LAYOUT OF ALL PLANT MATERIAL IS TO BE APPROVED BY THE LANDSCAPE ARCHITECT PRIOR TO PLANTING

NOTE: FOR YORK REGION DECIDUOUS TREE PLANTING DETAIL, REFER TO LANDSCAPE DETAIL NO. 7 OF L200 SHEET.

LANDSCAPE SOFTSCAPE PLAN

2
L101

SCALE 1:200

A MINIMUM DEPTH OF 300MM IS PROVIDED FOR ALL LANDSCAPE AREAS

ANY WORKS ENCRDGING INTO MINIMUM TREE PROTECTION ZONE SHALL BE CONDUCTED UNDER THE SUPERVISION OF THE CONSULTING ARBORIST, UTILIZING GOOD ARBORICULTURAL PRACTICES.

NOTE:
• COMPLETE REMOVAL OF ALL PAVEMENT AND GRANULAR BASE TO A DEPTH NO LESS THAN 1.0 METER IS REQUIRED FOR AREAS OF THE RIGHT-OF-WAY WHERE TREES ARE TO BE PLANTED AND WHICH WAS PREVIOUSLY A HARD PAVED SURFACE. EXCAVATED AREAS ARE TO BE BACKFILLED WITH OPSS 802 CONSTRUCTION SPECIFIED TOPSOIL IN ORDER TO IMPROVE PROPER ROOT DEVELOPMENT AND LONG-TERM SURVIVABILITY OF THE NEWLY PLANTED TREES.

• TREES SHALL BE SUBJECT TO A TWO (2) YEAR WARRANTY PERIOD, DURING THAT TIME THE DEVELOPER SHALL WARRANTY THE TREES AGAINST MORTALITY FROM ANY BIOTIC AND ABIOTIC FACTORS, AND/OR AS A RESULT OF INCORRECT PLANTING OR MAINTENANCE PROCEDURES.

• ALL TREES SHALL BE WATERED A MINIMUM OF FOURTEEN (14) TIMES PER YEAR THROUGHOUT THE GROWING SEASON FOR THE DURATION OF THE TWO-YEAR WARRANTY PERIOD.

• AT THE END OF THE TWO (2) YEAR WARRANTY ALL GATOR BAGS AND STAKES ARE TO BE REMOVED AND THE MULCH IS TO BE ADDED IN ACCORDANCE WITH SPECIFICATIONS.

GENERAL NOTES

- VERIFY ALL DIMENSIONS.
- DO NOT SCALE DRAWINGS.
- REPORT ANY DISCREPANCIES, DISCOVERED ERRORS, OR OMISSIONS TO THE LANDSCAPE ARCHITECT BEFORE PROCEEDING.
- IT IS ADVISED THAT CONTRACTORS CONTACT THE LANDSCAPE ARCHITECT PRIOR TO CONSTRUCTION TO ENSURE THE USE OF THE LATEST REVISED DRAWINGS.
- DRAWINGS AND SPECIFICATIONS ARE THE PROPERTY OF THE LANDSCAPE ARCHITECT.

KEY MAP

LEGEND

- PROPERTY LINE
- CHAINLINK FENCE
- DECORATIVE METAL FENCE
- MASONRY COLUMN
- EXISTING TREE TO BE PRESERVED
- PROPOSED DECIDUOUS TREE
- SODDING
- PROPOSED SHRUBS
- PROPOSED CONIFEROUS SHRUBS
- PROPOSED PERENNIALS & GRASSES
- COMPENSATION TREE PLANTING
- CONCRETE SIDEWALK
- CONCRETE PLATFORM WITH STEPS
- UNIT PAVING-ENTRANCE
- UNIT PAVING-AMENITY AREA
- LANDSCAPE FURNITURE
- STREETLIGHT POLE
- BOLLARD LIGHT
- HYDRO ONE TRANSFORMER
- WALL PACK LED LIGHTS

DRAWING LIST

NO.	DATE	REVISION	BY
11	APR 01, 2025	ISSUED FOR SPA RESUBMISSION	B.B.
10	MAR 11th, 2025	ISSUED FOR SPA RESUBMISSION	B.B.
9	APR 30th, 2024	UPDATED CLIENT NAME AND 19T NUMBER	B.B.
8	APR 15th, 2024	ISSUED FOR SPA RESUBMISSION	B.B.
7	FEB 15, 2024	ISSUED FOR SPA	B.B.
6	FEB 14, 2024	ISSUED FOR COORDINATION AND REVIEW	B.B.
5	FEB 09, 2024	ISSUED FOR COORDINATION AND REVIEW	B.B.
4	SEPT 14, 2023	ISSUED FOR SUBMISSION	B.B.
3	AUG 25, 2023	ISSUED FOR SUBMISSION	B.B.
2	AUG 20, 2023	ISSUED FOR COORDINATION AND REVIEW	A.S.
1	AUG 10, 2021	ISSUED FOR COORDINATION AND REVIEW	N.S.

No. DATE. REVISION. BY.

It is the responsibility of the Contractor and/or Owner to ensure that the drawings with the latest revisions are used for construction.

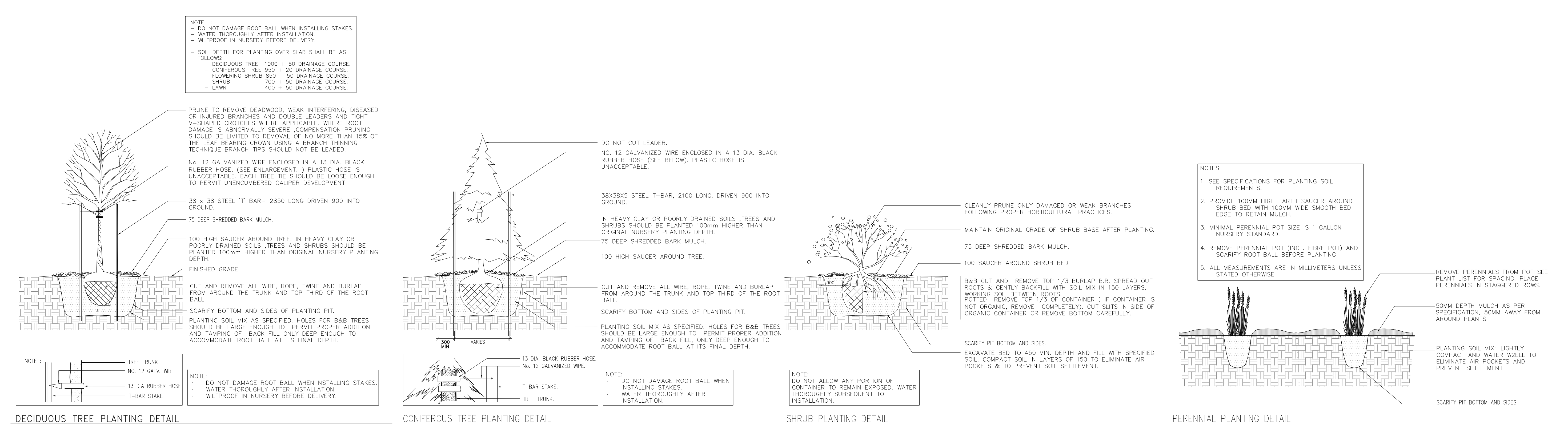
STRYBOS BARRON KING
LANDSCAPE ARCHITECTURE

5770 HURONTARIO STREET, SUITE 320
MISSISSAUGA, ONTARIO, L4W 3G5
416-685-6449 F. 905-712-2301
WWW.STRYBOS.COM

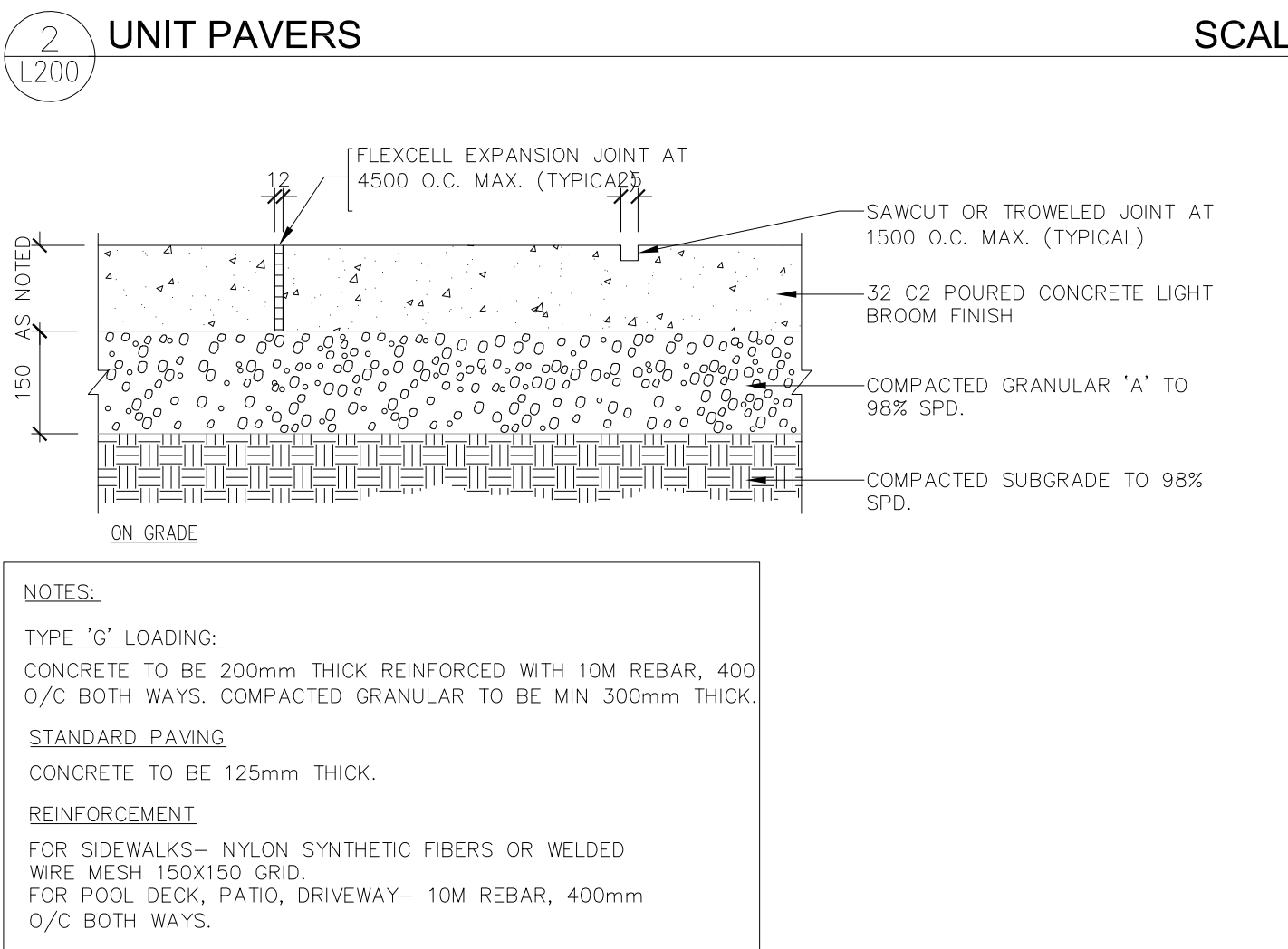
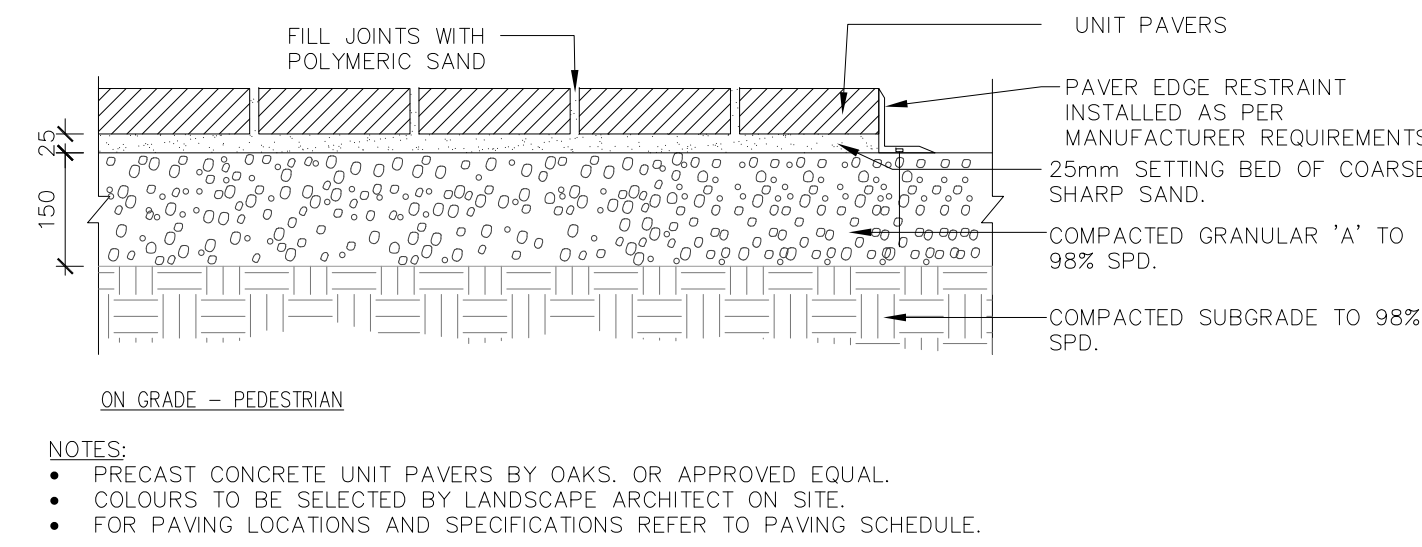
PROJECT: THE ACORN DEVELOPMENT CORPORATION
BLOCK 23 - 19T 14001, STACKED TOWNHOUSES
EAST GWILLIMBURY, ONTARIO

DRAWING TITLE: LANDSCAPE SOFTSCAPE PLAN

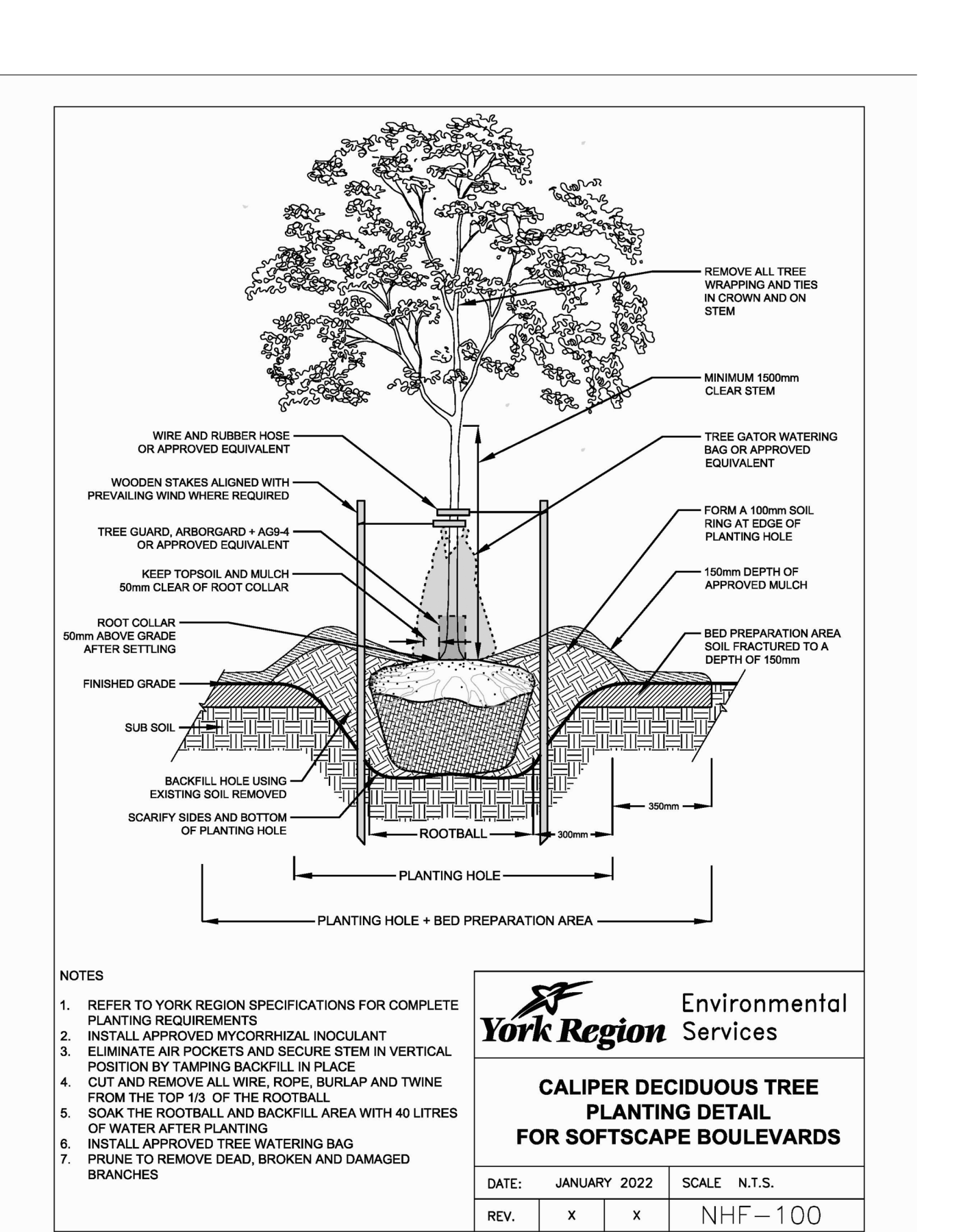
SCALE: 1:200	PROJECT No. 5647
DATE: JULY 2021	DRAWING No. L101
DRAWN BY: K.K.	
CHECKED BY: B.B.	



PLANTING DETAILS



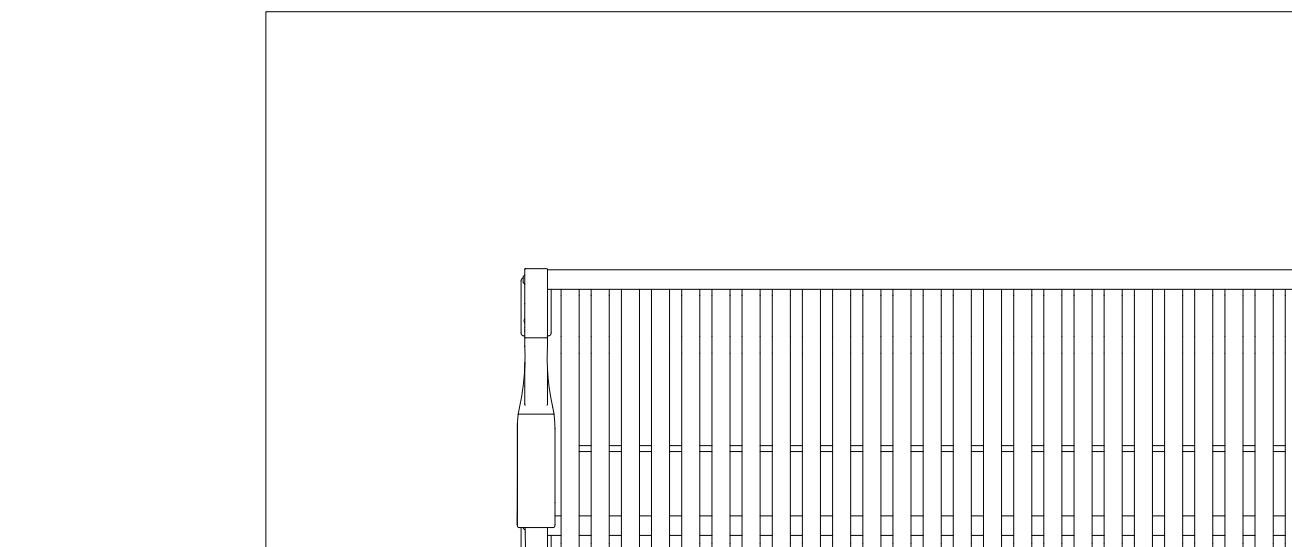
CONCRETE PAVING



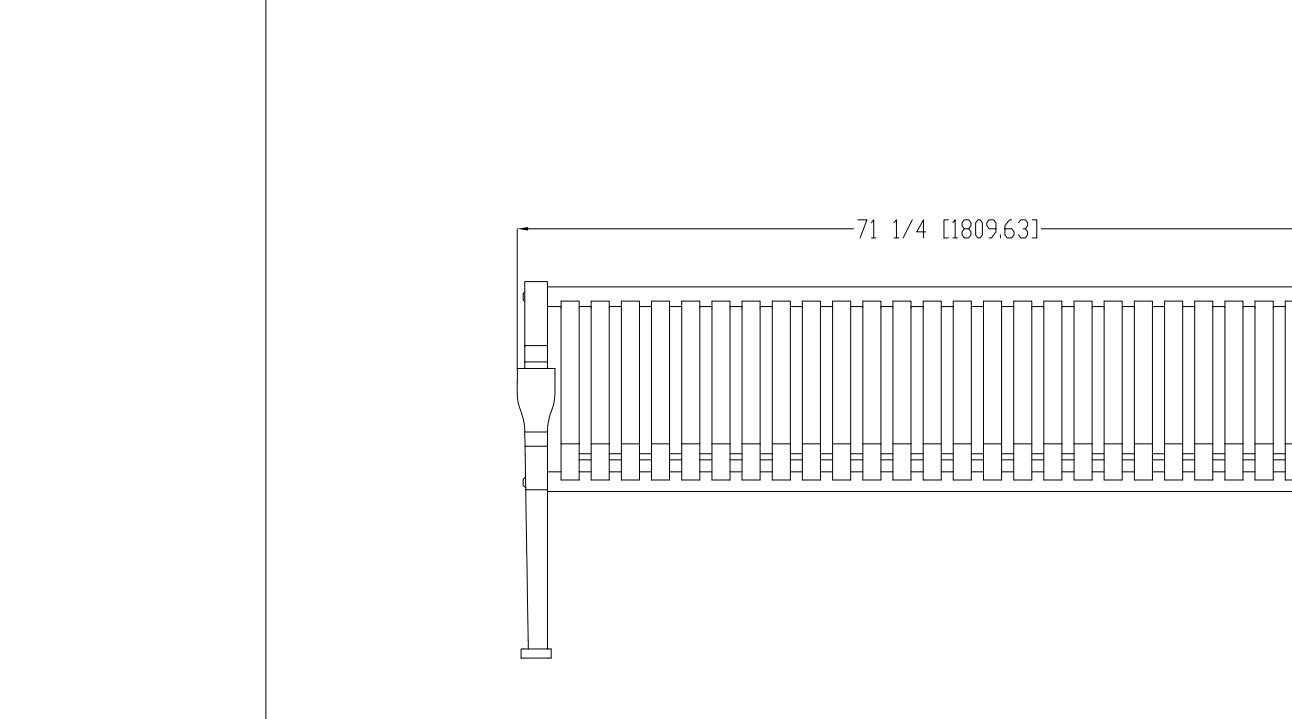
YORK REGION DECIDUOUS TREE PLANTING DETAIL

CONIFEROUS TREE PLANTING DETAIL

SHRUB PLANTING DETAIL

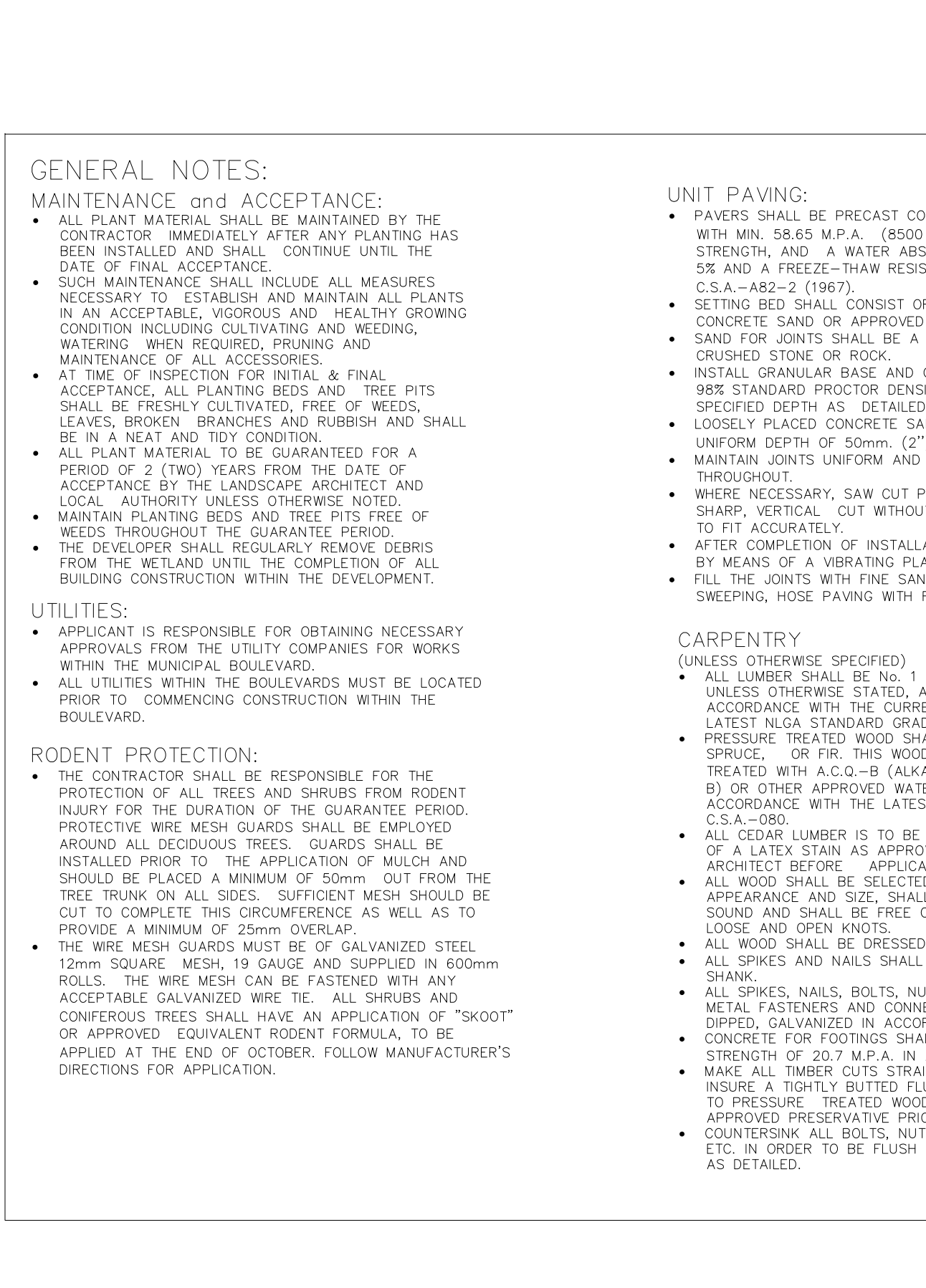


PERENNIAL PLANTING DETAIL



PERENNIAL PLANTING DETAIL

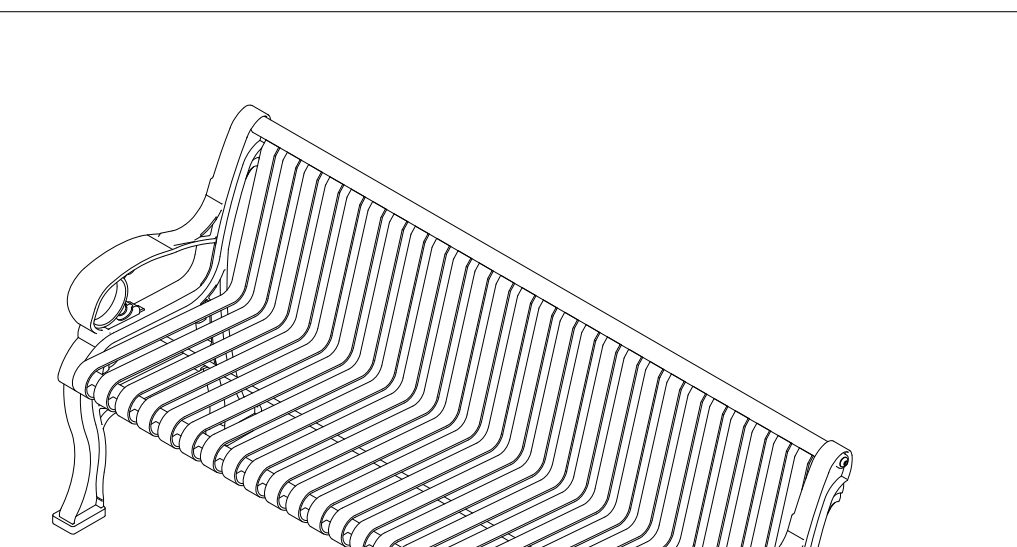
PERENNIAL PLANTING DETAIL



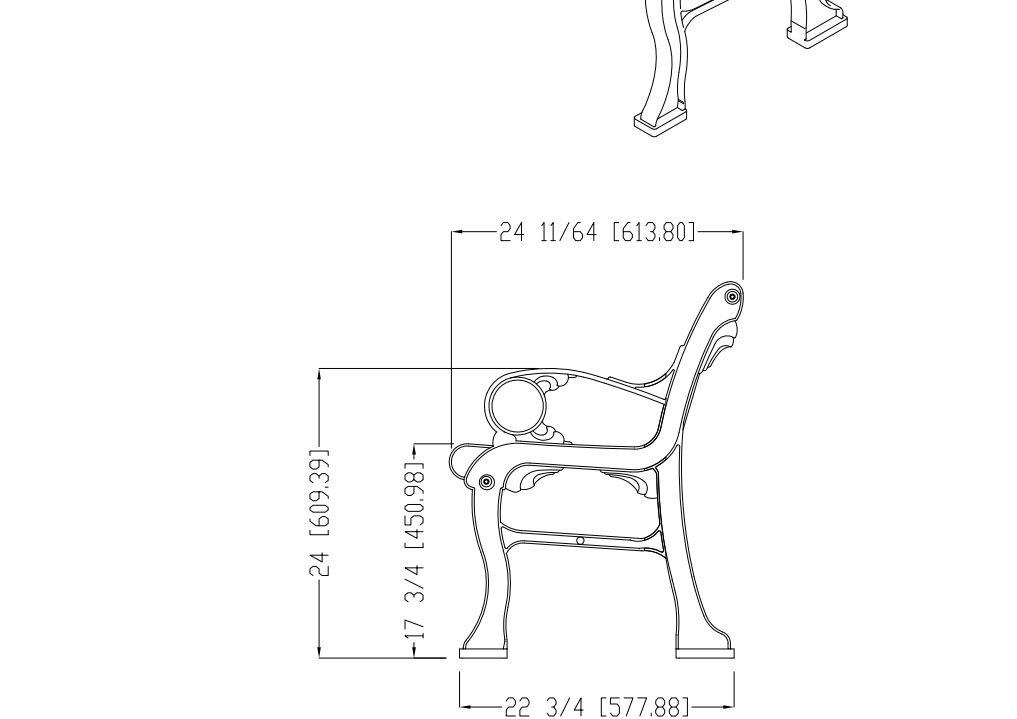
PERENNIAL PLANTING DETAIL

SHRUB PLANTING DETAIL

PERENNIAL PLANTING DETAIL

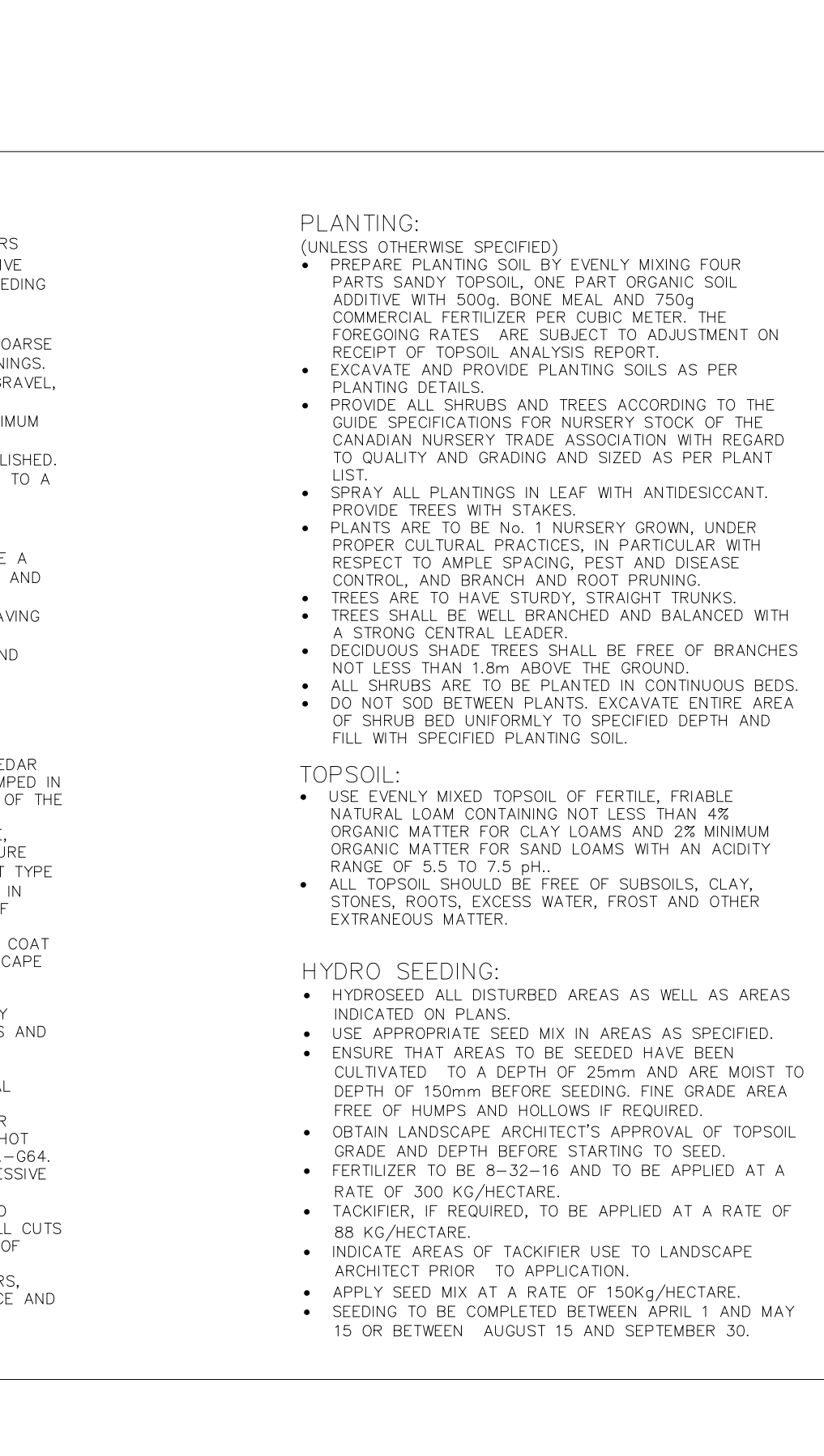


PERENNIAL PLANTING DETAIL



PERENNIAL PLANTING DETAIL

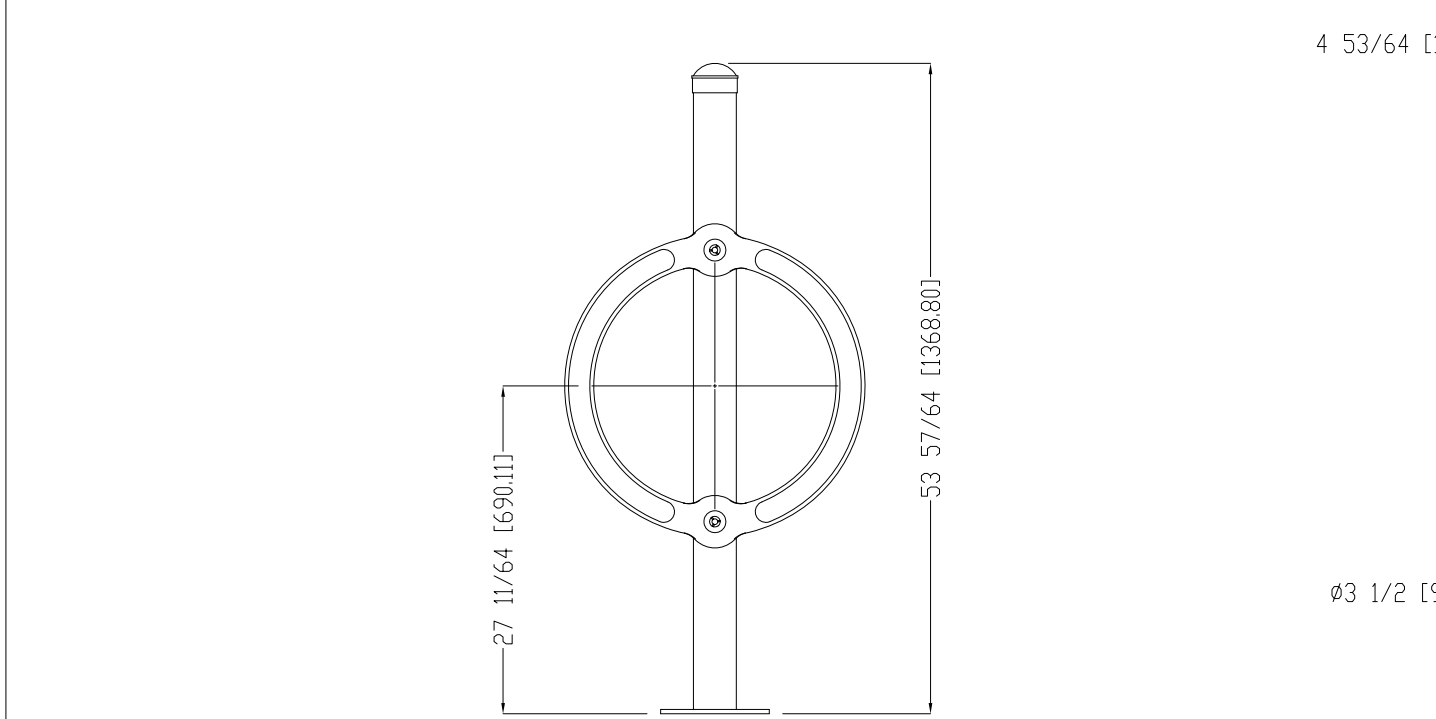
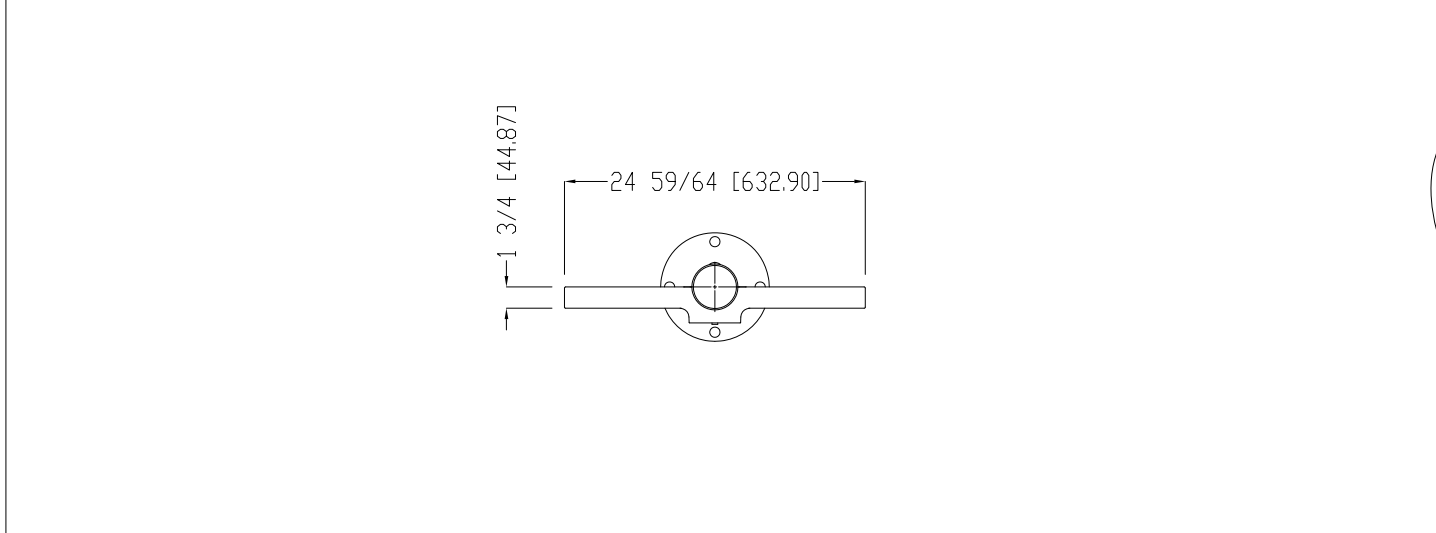
PERENNIAL PLANTING DETAIL



PERENNIAL PLANTING DETAIL

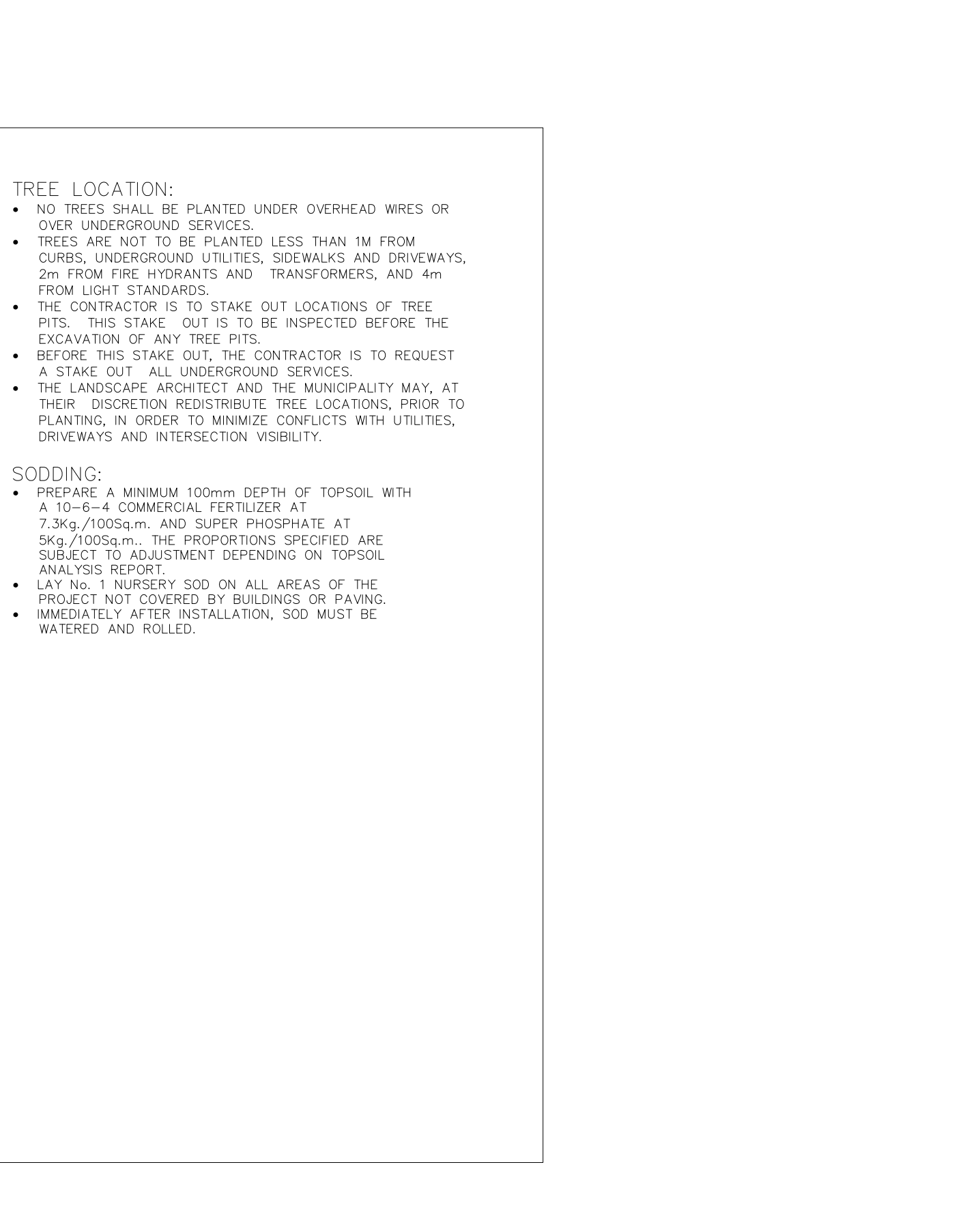
N.T.S

PERENNIAL PLANTING DETAIL



PERENNIAL PLANTING DETAIL

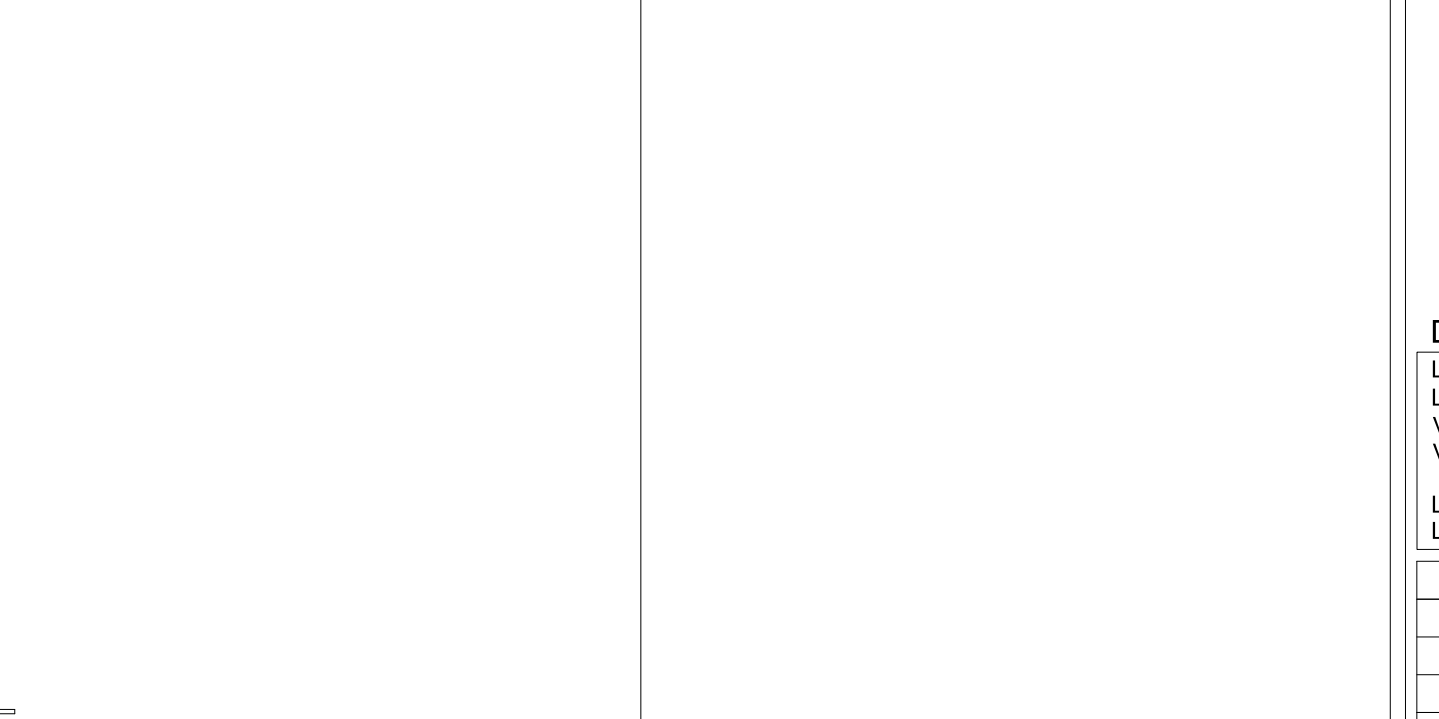
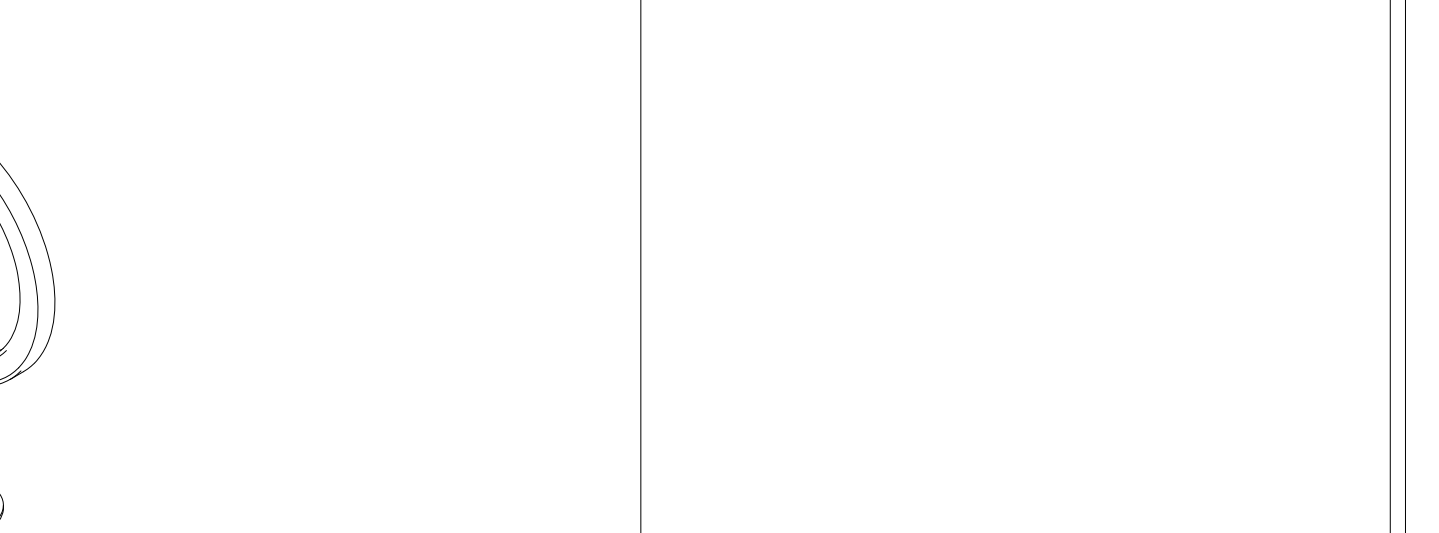
PERENNIAL PLANTING DETAIL



PERENNIAL PLANTING DETAIL

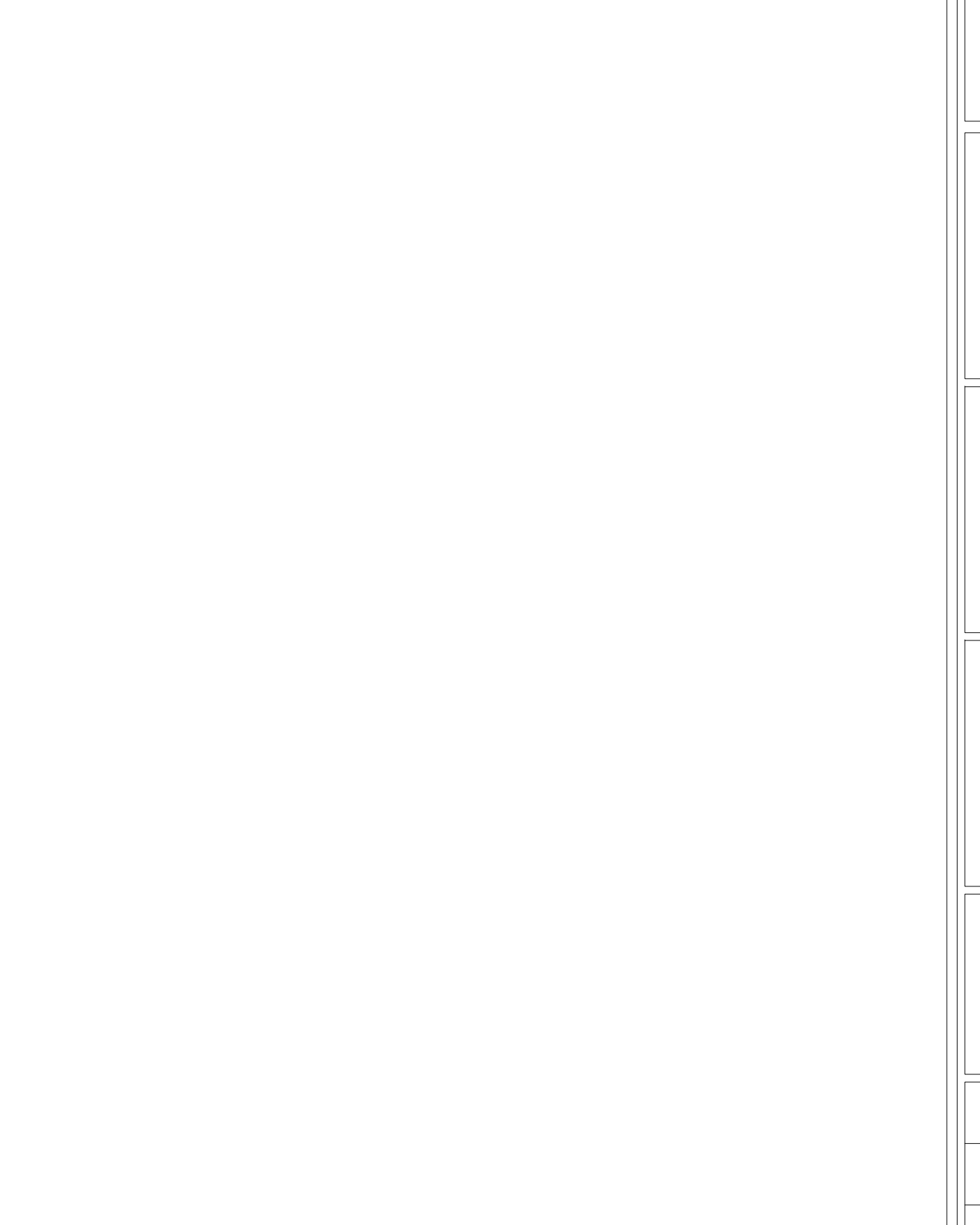
N.T.S

PERENNIAL PLANTING DETAIL

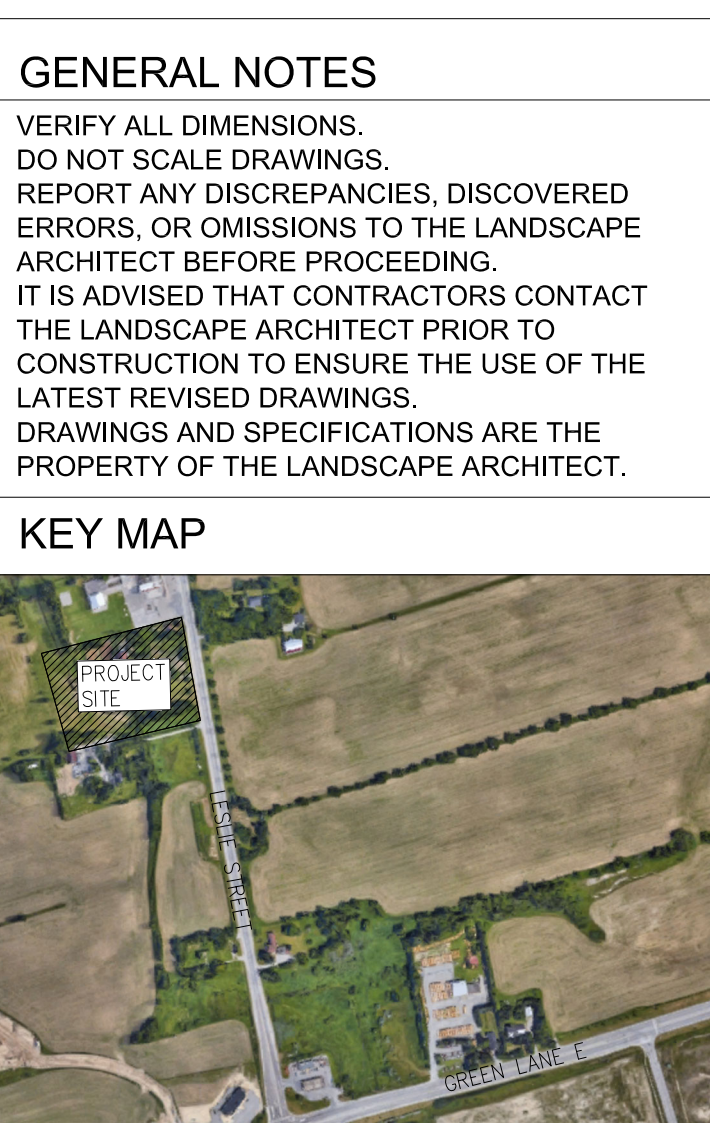


PERENNIAL PLANTING DETAIL

PERENNIAL PLANTING DETAIL

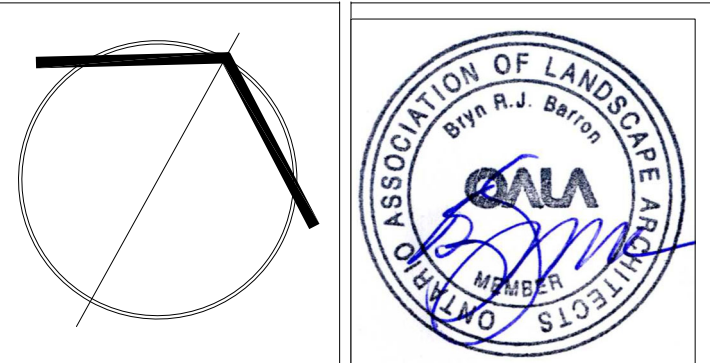


PERENNIAL PLANTING DETAIL



DRAWING LIST			
100- LANDSCAPE HARDSCAPE PLAN			
101- LANDSCAPE SOFTSCAPE PLAN			
V100- EXISTING TREE INVENTORY AND PRESERVATION PLAN			
V101- EXISTING TREE INVENTORY AND PRESERVATION YORK REGION DETAILS			
200- LANDSCAPE DETAILS			
201- LANDSCAPE DETAILS			
No.	DATE.	REVISION.	BY.
11	APR 01, 2025	ISSUED FOR SPA RESUBMISSION	B.B.
10	MAR 11th, 2025	ISSUED FOR SPA RESUBMISSION	B.B.
9	APR 30th, 2024	UPDATED CLIENT NAME AND 191 NUMBER	B.B.
8	APR 15th, 2024	ISSUED FOR SPA RESUBMISSION	B.B.
7	FEB 15, 2024	ISSUED FOR SPA	B.B.
6	FEB 14, 2024	ISSUED FOR COORDINATION AND REVIEW	B.B.
5	FEB 09, 2024	ISSUED FOR COORDINATION AND REVIEW	B.B.
4	SEPT 14, 2021	ISSUED FOR SUBMISSION	B.B.
3	AUG. 25, 2021	ISSUED FOR SUBMISSION	B.B.
2	AUG. 20, 2021	ISSUED FOR COORDINATION AND REVIEW	A.S.
1	AUG. 10, 2021	ISSUED FOR COORDINATION AND REVIEW	N.S.

It is the responsibility of the Contractor and/or Owner to ensure that the drawings with the latest revisions are used for construction.



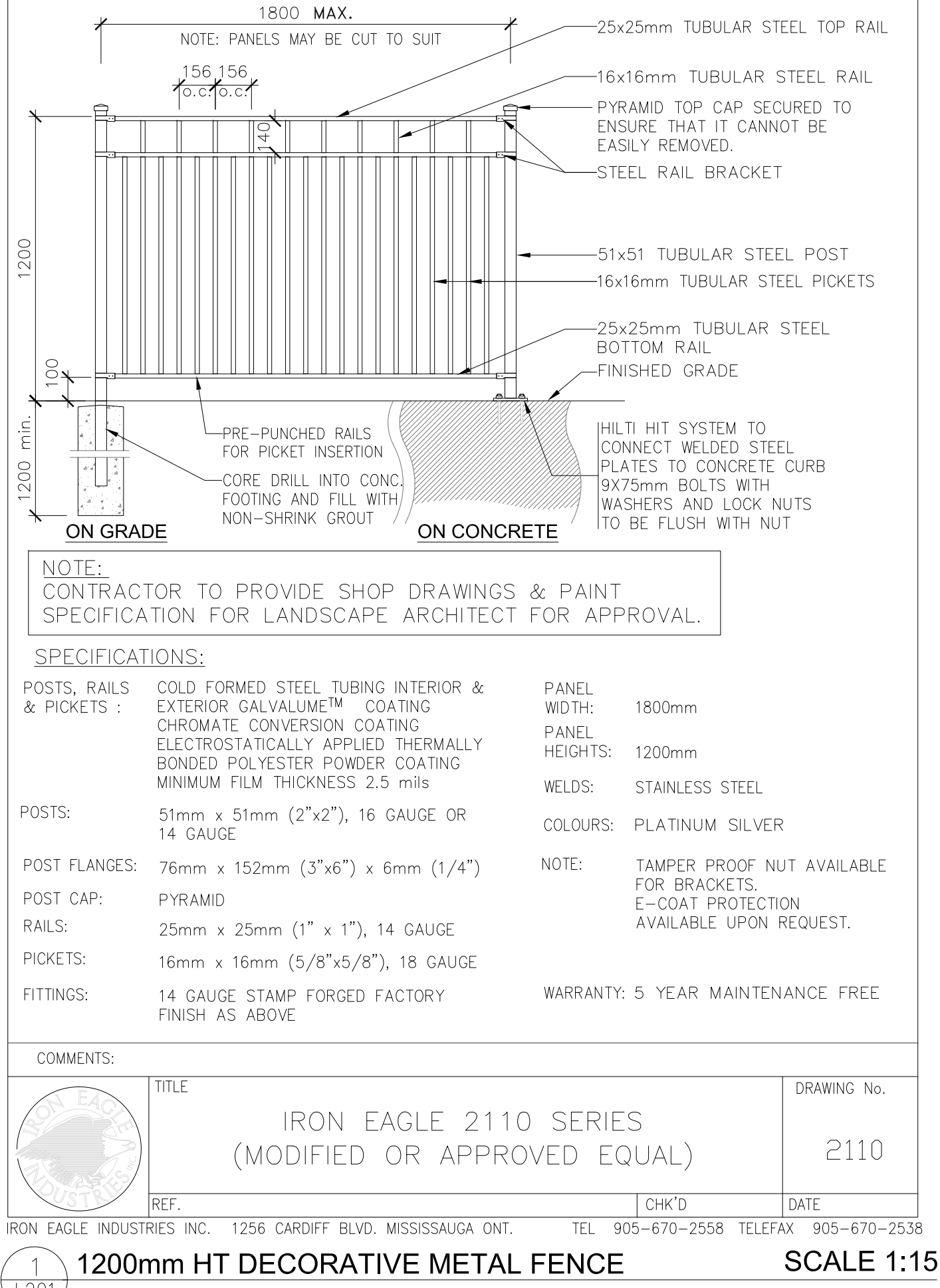
S.B.K. 3770 HURONTARIO STREET, SUITE 320
MISSISSAUGA, ONTARIO, L4R 3G5
T: 416.695.4949 F: 905.712.3101
WWW.STRYBOS.COM

STRYBOS BARRON KING
LANDSCAPE ARCHITECTURE

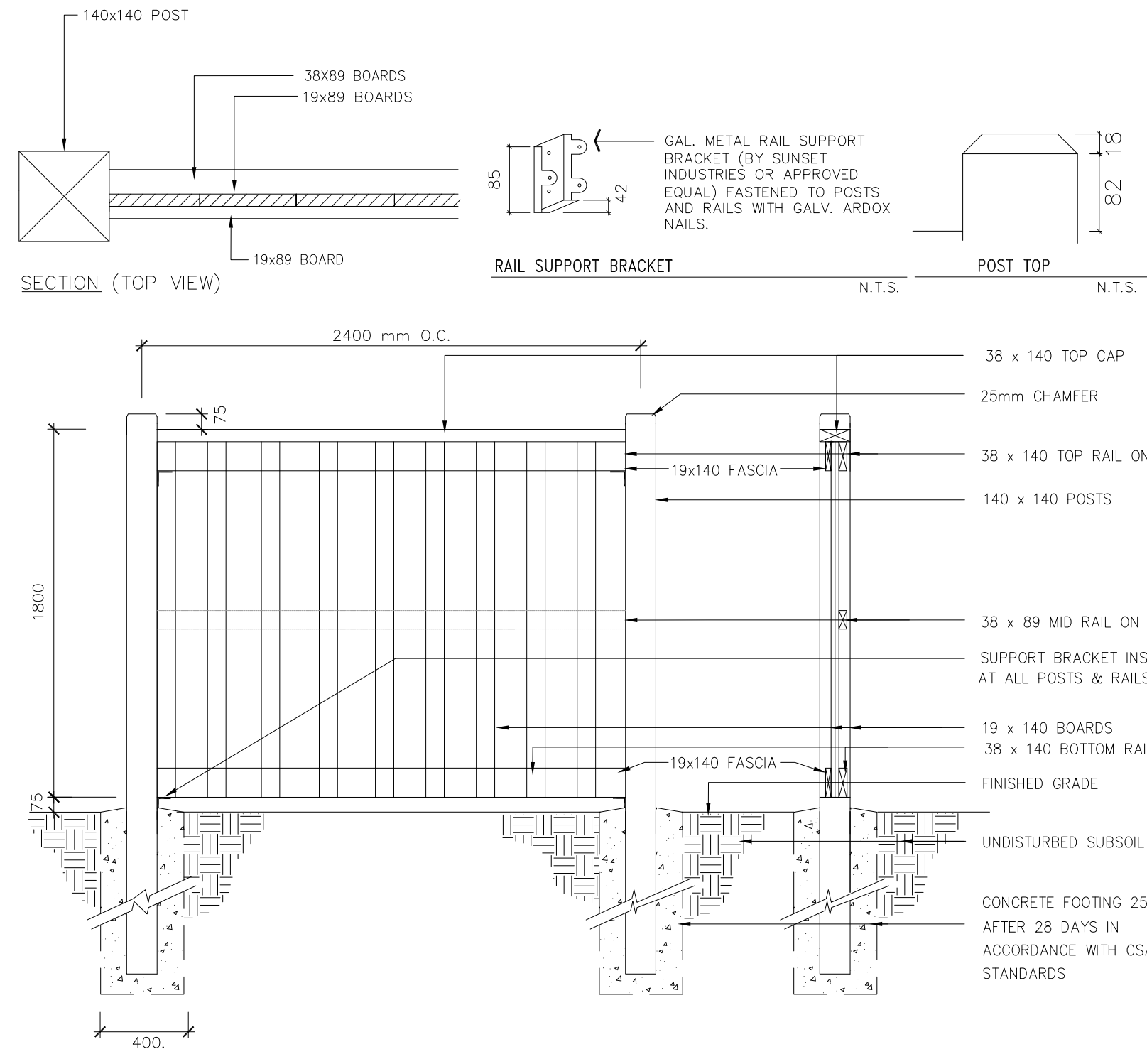
PROJECT: THE ACORN DEVELOPMENT CORPORATION
BLOCK 23 - 19T 14001, STACKED TOWNHOUSES
EAST GWILLIMBURY, ONTARIO

DRAWING TITLE: LANDSCAPE DETAILS

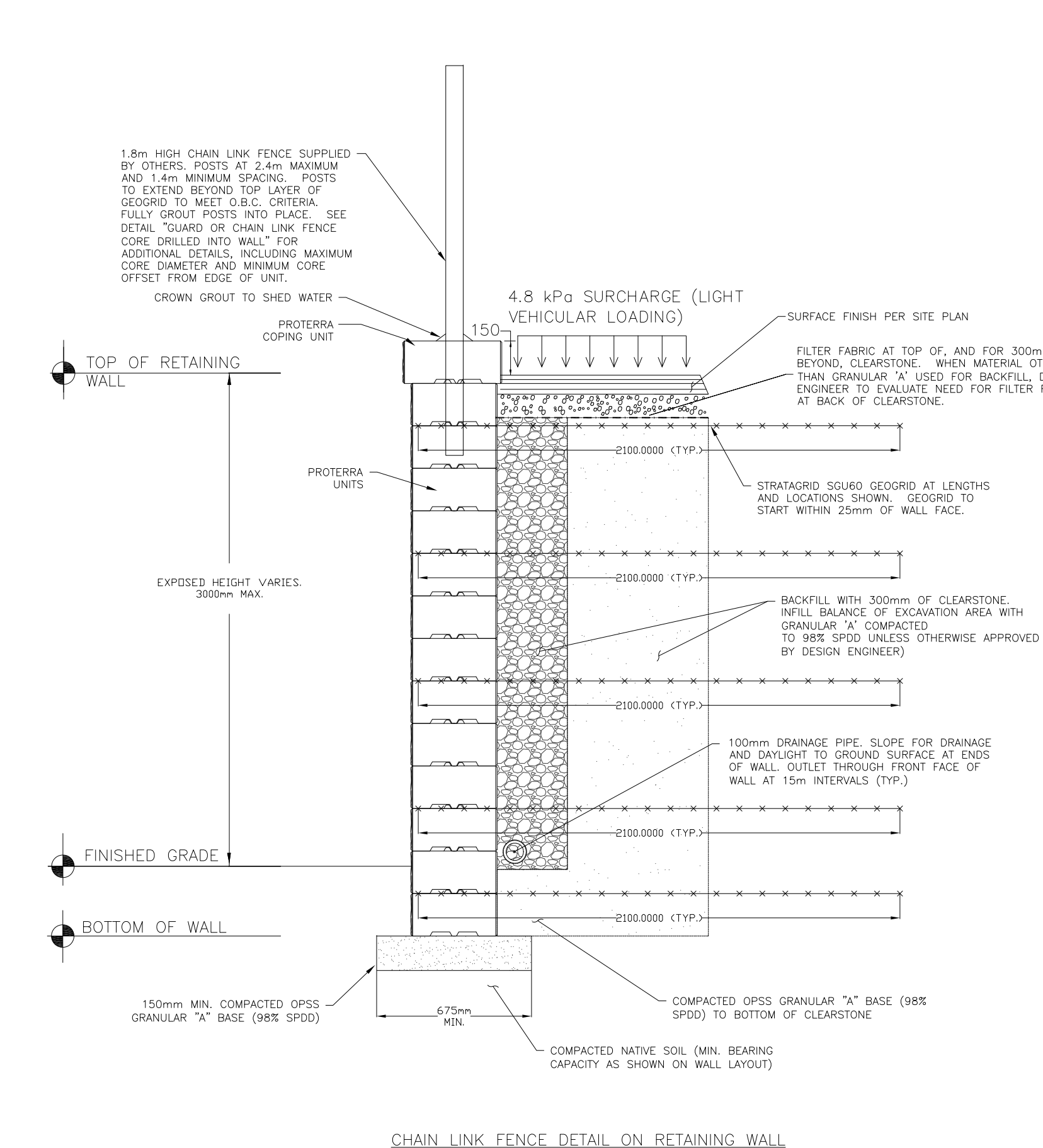
SCALE:	AS SHOWN	PROJECT No.	5647
DATE:	JULY 2021	DRAWING No.	L200
DRAWN BY:	K.K.		
CHECKED BY:	B.B.		



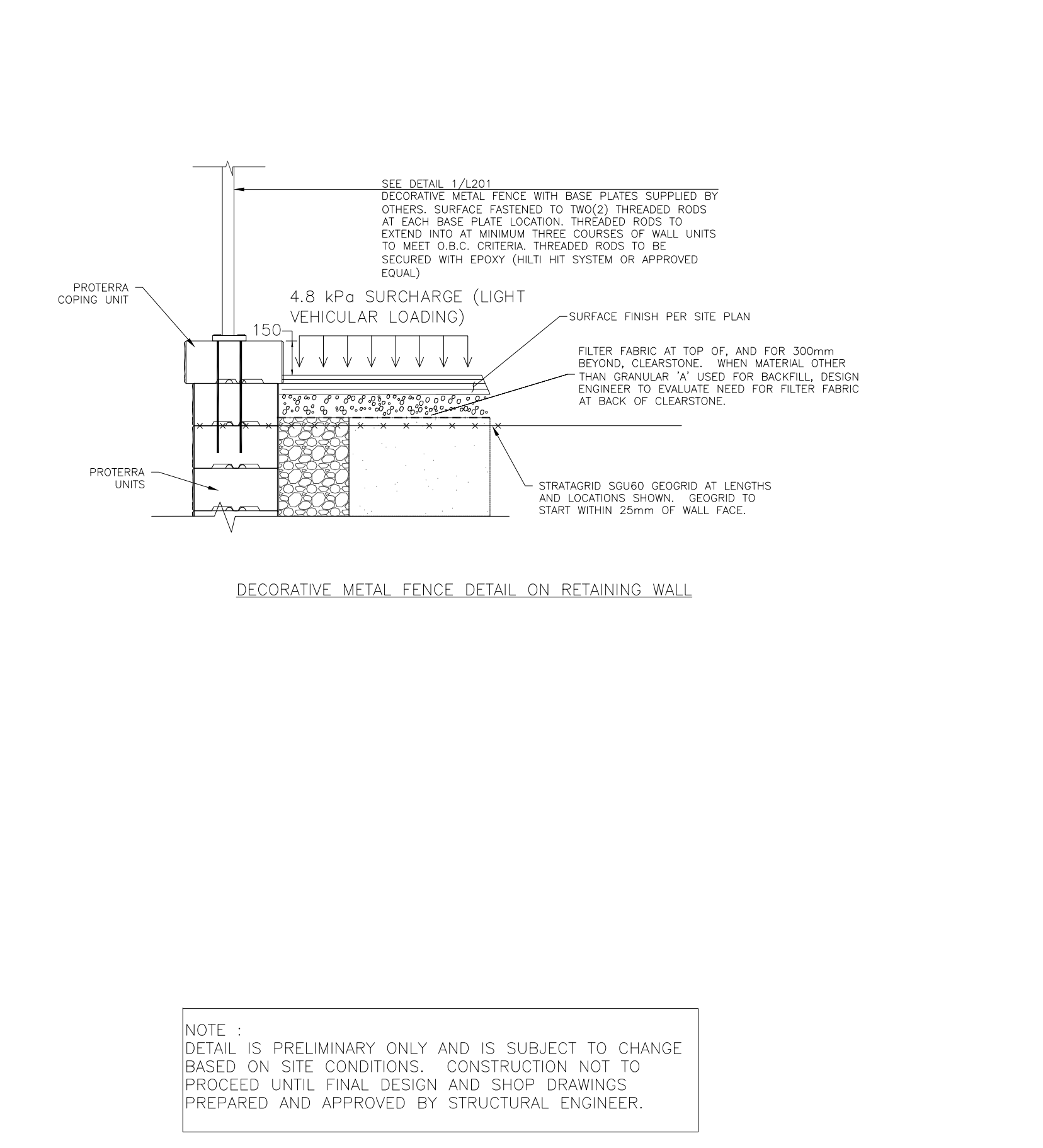
1200mm HT DECORATIVE METAL FENCE SCALE 1:15



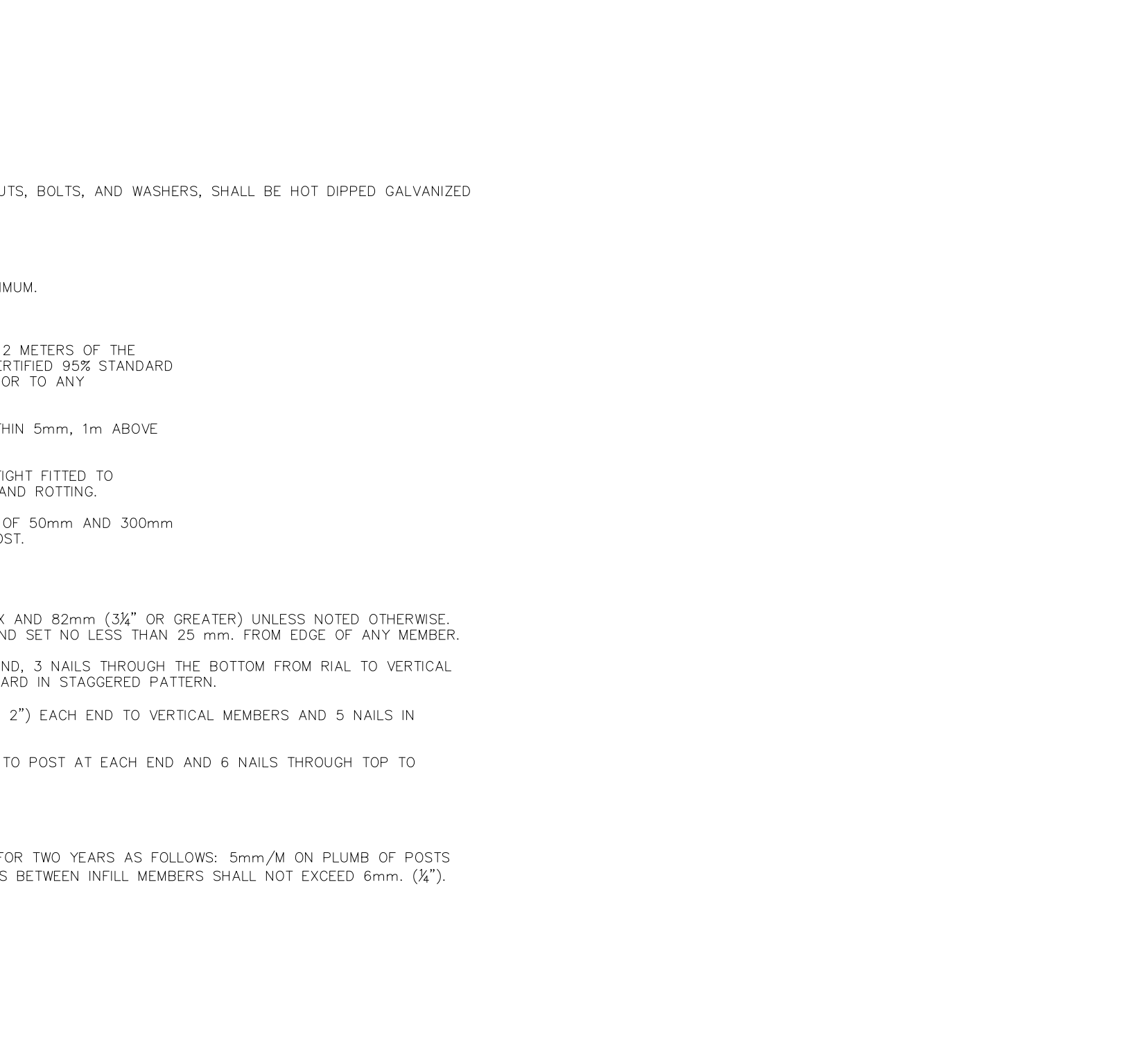
1800mm HT WOOD PRIVACY FENCE



RETAINING WALL DETAIL (3M HIGH MAX.)



DECORATIVE METAL FENCE DETAIL ON RETAINING WALL



1800mm HT WOOD PRIVACY FENCE

GENERAL NOTES

- VERIFY ALL DIMENSIONS.
- DO NOT SCALE DRAWINGS.
- REPORT ANY DISCREPANCIES, DISCOVERED ERRORS, OR OMISSIONS TO THE LANDSCAPE ARCHITECT BEFORE PROCEEDING.
- IT IS ADVISED THAT CONTRACTORS CONTACT THE LANDSCAPE ARCHITECT PRIOR TO CONSTRUCTION TO ENSURE THE USE OF THE LATEST REVISED DRAWINGS.
- DRAWINGS AND SPECIFICATIONS ARE THE PROPERTY OF THE LANDSCAPE ARCHITECT.

KEY MAP

DRAWING LIST

No.	DATE	REVISION	BY
11	APR 01, 2025	ISSUED FOR SPA RESUBMISSION	B.B.
10	MAR 11th, 2025	ISSUED FOR SPA RESUBMISSION	B.B.
9	APR 30th, 2024	UPDATED CLIENT NAME AND 1ST NUMBER	B.B.
8	APR 15th, 2024	ISSUED FOR SPA RESUBMISSION	B.B.
7	FEB 15, 2024	ISSUED FOR SPA	B.B.
6	FEB 14, 2024	ISSUED FOR COORDINATION AND REVIEW	B.B.
5	FEB 09, 2024	ISSUED FOR COORDINATION AND REVIEW	B.B.
4	SEPT 14, 2021	ISSUED FOR SUBMISSION	B.B.
3	AUG. 25, 2021	ISSUED FOR SUBMISSION	B.B.
2	AUG. 20, 2021	ISSUED FOR COORDINATION AND REVIEW	A.S.
1	AUG. 10, 2021	ISSUED FOR COORDINATION AND REVIEW	N.S.

It is the responsibility of the Contractor and/or Owner to ensure that the drawings with the latest revisions are used for construction.

SBK

STRYBOS BARRON KING

LANDSCAPE ARCHITECTURE

PROJECT:

THE ACORN DEVELOPMENT CORPORATION

BLOCK 23 - 19T 14001, STACKED TOWNHOUSES

EAST GWILLIMBURY, ONTARIO

DRAWING TITLE:

LANDSCAPE DETAILS

SCALE:

AS SHOWN

DATE:

JULY 2021

DRAWN BY:

K.K.

CHECKED BY:

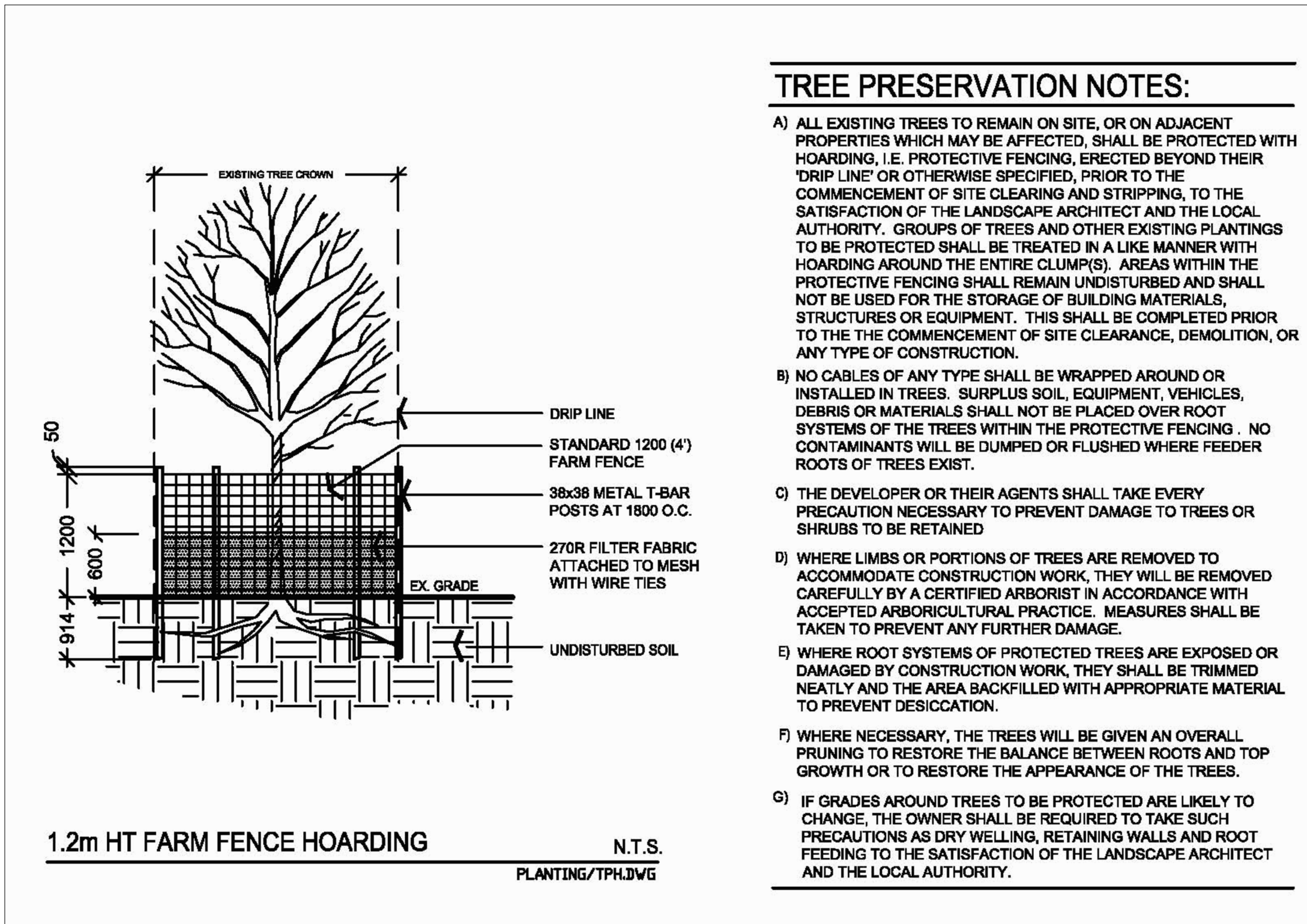
B.B.

PROJECT No.

5647

DRAWING No.

L201



EXISTING TREE INVENTORY													
KEY SPECIES	CALIPER (cm)	CROWN (m)	HEALTH G/F/P	STRUCTURE	COMMENTS	PRESERVATION DIRECTION	OWNERSHIP	MIN. TPZ	KEY				
145 Black Walnut	50.0	16.0	Fair	Asymmetric	Minor Deadwood; Understory Crowding; Vines Present	REMOVE	PRIVATE	NA	145				
146 Black Walnut	20.45	16.0	Fair	Multi-stem	Minor Deadwood; Understory Crowding; Vines Present	REMOVE	PRIVATE	NA	146				
147 Black Walnut	65.0	16.0	Fair	Asymmetric	Minor Deadwood; Understory Crowding; Vines Present	REMOVE	PRIVATE	NA	147				
148 Manitoba Maple	24.0	10.0	Fair	Leaning	Crowded by Adjacent Tree; Decay at Base; Suckering at Base; Vines Present	REMOVE	PRIVATE	NA	148				
149 Manitoba Maple	25.27	10.0	Fair	Leaning	Crowded by Adjacent Tree; Decay at Base; Suckering at Base; Vines Present	REMOVE	PRIVATE	NA	149				
150 Black Walnut	32.0	10.0	Fair	Asymmetric	Crowded by Adjacent Tree; Understory Crowding; Vines Present	REMOVE	PRIVATE	NA	150				
151 Black Walnut	28.0	10.0	Fair	Asymmetric	Crowded by Adjacent Tree; Understory Crowding; Vines Present	REMOVE	PRIVATE	NA	151				
152 Black Walnut	45.0	15.0	Fair	Asymmetric	Crowded by Adjacent Tree; Understory Crowding; Vines Present	REMOVE	PRIVATE	NA	152				
153 Manitoba Maple	48.0	12.0	Fair	Leaning	Crowded by Adjacent Tree; Decay at Base	REMOVE	PRIVATE	NA	153				
154 Manitoba Maple	34.43	15.0	Fair	Leaning, Multi-stem	Crowded by Adjacent Tree; Decay at Base	REMOVE	PRIVATE	NA	154				
155 Black Walnut	54.0	14.0	Fair	Asymmetric	Minor Deadwood; Understory Crowding; Vines Present	REMOVE	NHS LANDS	NA	155				
156 Black Walnut	44.0	12.0	Fair	Asymmetric	Crowded by Adjacent Tree; Minor Dieback; Vines Present	PRESERVE	NHS LANDS	3.0	156				
157 Black Walnut	28	10.0	Fair	Asymmetric	Crowded by Adjacent Tree; Minor Dieback	PRESERVE	NHS LANDS	1.8	157				
158 Black Walnut	50	12.0	Fair	Asymmetric	Crowded by Adjacent Tree; Minor Dieback	PRESERVE	NHS LANDS	3.0	158				
159 Manitoba Maple	24	8.0	Fair	Asymmetric	Crowded by Adjacent Tree; Minor Dieback	PRESERVE	NHS LANDS	1.8	159				
160 Manitoba Maple	18.18	6.0	Fair	Multi-stem	Ingrown with Fence; Crowded by Adjacent Tree; Minor Dieback	PRESERVE	NHS LANDS	1.8	160				
161 White Willow	68.45	20.0	Fair	Multi-stem	Minor deadwood; Understory crowding	REMOVE	PRIVATE	NA	161				
162 Manitoba Maple	29.0	8.0	Fair	Leaning	Crowded by Adjacent Tree; Decay at Base; Minor Dieback	REMOVE	PRIVATE	NA	162				
163 Manitoba Maple	27.0	8.0	Fair	Leaning	Crowded by Adjacent Tree; Decay at Base; Minor Dieback	REMOVE	PRIVATE	NA	163				
164 Manitoba Maple	31.0	8.0	Fair	Leaning	Crowded by Adjacent Tree; Decay at Base; Minor Dieback	REMOVE	PRIVATE	NA	164				
165 Emerald Cedar	5.10	2.0	Fair	One sided form	Good	REMOVE	PRIVATE	NA	165				
166 Emerald Cedar	5.10	2.0	Fair	One sided form	Good	REMOVE	PRIVATE	NA	166				
167 Emerald Cedar	5.10	2.0	Fair	One sided form	Good	REMOVE	PRIVATE	NA	167				
168 Manitoba Maple	19.0	6.0	Fair	Symmetrical	Trunk lean; Crowded by Adjacent Tree.	REMOVE	PRIVATE	NA	168				
169 Norway Maple	10.21	10.0	Fair	Multi-stem	Understory Crowding; 10 stems	REMOVE	REGION	2.4	169				
170 Manitoba Maple	5.10	3.0	Fair	Multi-stem	Understory Crowding; Suckering from large mature stem	REMOVE	REGION	2.4	170				
171 Norway Maple	82.0	14.0	Fair	Asymmetric	Crowded by Adjacent Tree; Broken Branches in Crown; Crowded by Adjacent Tree; Weak Union	REMOVE	PRIVATE	NA	171				
172 Norway Maple	91	14.0	Fair	Asymmetric	Crowded by Adjacent Tree; Broken Branches in Crown; Crowded by Adjacent Tree; Weak Union	REMOVE	PRIVATE	NA	172				
173 Norway Maple	88.0	14.0	Fair	Asymmetric	Crowded by Adjacent Tree; Broken Branches in Crown; Crowded by Adjacent Tree; Weak Union	REMOVE	PRIVATE	NA	173				
174 Norway Maple	84.0	14.0	Fair	Asymmetric	Crowded by Adjacent Tree; Broken Branches in Crown; Crowded by Adjacent Tree; Weak Union	REMOVE	PRIVATE	NA	174				
175 Mulberry	14.0	3.0	Fair	Weeping	Adjacent to House	REMOVE	PRIVATE	NA	175				
176 Weeping Willow	91.0	8.0	Fair	Weeping	Topped	REMOVE	PRIVATE	NA	176				
177 Manitoba Maple	22.35	10.0	Fair	Multi-stem	Minor Dieback in Crown; Decay on Stem	REMOVE	PRIVATE	NA	177				
178 Manitoba Maple	31.0	10.0	Fair	Leaning	Crowded by Adjacent Tree; Suckering at Base	REMOVE	PRIVATE	NA	178				
179 Manitoba Maple	23.25	10.0	Fair	Multi-stem	Crowded by Adjacent Tree; Suckering at Base	REMOVE	PRIVATE	NA	179				
180 Manitoba Maple	21.28	10.0	Fair	Leaning, Multi-stem	Crowded by Adjacent Tree; Suckering at Base	REMOVE	PRIVATE	NA	180				
181 Manitoba Maple	22.27	10.0	Fair	Leaning, Multi-stem	Crowded by Adjacent Tree; Suckering at Base	REMOVE	PRIVATE	NA	181				
182 Manitoba Maple	37.40	10.0	Fair	Leaning, Multi-stem	Crowded by Adjacent Tree; Suckering at Base; Ingrown with Fence and Structure	REMOVE	PRIVATE	NA	182				

EXISTING TREE INVENTORY													
KEY SPECIES	CALIPER (cm)	CROWN (m)	HEALTH G/F/P	STRUCTURE	COMMENTS	PRESERVATION DIRECTION	OWNERSHIP	MIN. TPZ	KEY				
183 Manitoba Maple	24.0	8.0	Fair	Leaning	Ingrown with Structure	REMOVE	PRIVATE	NA	183				
184 Manitoba Maple	56.0	12.0	Fair	Asymmetric	Ingrown with Fence; Crowded by Adjacent Tree; Minor Dieback	REMOVE	PRIVATE	NA	184				
185 Manitoba Maple	18.21	10.0	Fair	Leaning, Multi-stem	Ingrown with Silo	REMOVE	PRIVATE	NA	185				
186 Manitoba Maple	49.0	10.0	Fair	Asymmetric	Crowded by Adjacent Tree; Crowded Branching	REMOVE	PRIVATE	NA	186				
187 Manitoba Maple	41.0	10.0	Fair	Leaning	Crowded by Adjacent Tree; Crowded Branching	REMOVE	PRIVATE	NA	187				
188 Manitoba Maple	27.52	12.0	Fair	Multi-stem	Crowded by Adjacent Tree; Crowded Branching	REMOVE	PRIVATE	NA	188				
189 Manitoba Maple	42.64	15.0	Fair	Multi-stem	Crowded by Adjacent Tree; Crowded Branching	REMOVE	PRIVATE	NA	189				
190 Manitoba Maple	33.40	12.0	Fair	Multi-stem	Crowded by Adjacent Tree	REMOVE	PRIVATE	NA	190				
191 Manitoba Maple	58.0	12.0	Fair	Asymmetric	Crowded by Adjacent Tree	REMOVE	PRIVATE	NA	191				
192 Black Walnut	22.23	8.0	Fair	Asymmetric	Crowded by Adjacent Tree	REMOVE	PRIVATE	NA	192				
193 Black Walnut	23.0	8.0	Fair	Asymmetric	Crowded by Adjacent Tree	REMOVE	PRIVATE	NA	193				
194 Manitoba Maple	50.53	10.0	Fair	Multi-stem	Growing into Fence	REMOVE	BOUNDARY	NA	194				
195 Manitoba Maple	21.25	10.0	Fair	Multi-stem	Crowded by Structure	REMOVE	PRIVATE	NA	195				
196 Manitoba Maple	10.15	12.0	Fair	Multi-stem	Crowded by Adjacent Tree	PRESERVE	NHS LANDS	2	196				
197 Manitoba Maple	15.20	10.0	Fair	Multi-stem	Crowded by Adjacent Tree	PRESERVE	NHS LANDS	1.8	197				
198 Manitoba Maple	10.35	12.0	Fair	Multi-stem	Growing into Fence	PRESERVE	NHS LANDS	1.8	198				
199 Manitoba Maple	10.35	12.0	Fair	Multi-stem	Growing into Fence	PRESERVE	NHS LANDS	2.4	199				
200 Manitoba Maple	18.25	12.0	Fair	Multi-stem	Main stem dead; Crowded by adjacent tree	PRESERVE	NHS LANDS	1.8	200				
201 Manitoba Maple	37.60	12.0	Fair	Multi-stem	Crowded by adjacent tree	REMOVE	REGION	6	201				
202 Manitoba Maple	44.0	8.0	Fair	Asymmetric	Crowded Branching; Decay on Stem	REMOVE	REGION	4.4	202				
203 Manitoba Maple	20.25	10.0	Fair	Multi-stem	Crowded by adjacent tree	REMOVE	REGION	2.5	203				
204 Manitoba Maple	23.24	10.0	Fair	Multi-stem	Crowded by adjacent tree	REMOVE	REGION	2.4	204				
205 Manitoba Maple	5.42	8.0	Poor	Multi-stem	Crowded by adjacent tree; Growing into fence	REMOVE	REGION	4.2	205				
206 Manitoba Maple	18.25	12.0	Fair	Multi-stem	Crowded by adjacent tree	REMOVE	PRIVATE	NA	206				
207 Manitoba Maple	50.0	10.0	Fair	Asymmetric	Crowded by adjacent tree	REMOVE	PRIVATE	NA	207				
208 Manitoba Maple	17.28	11.0	Fair	Asymmetric	Crowded by adjacent tree	REMOVE	PRIVATE	NA	208				
209 Glimson King Norway Maple	49.0	12.0	Fair	Pyramidal	Good	REMOVE	PRIVATE	NA	209				
210 Linden	27.0	6.0	Fair	Pyramidal	Good; park side	PRESERVE	NEIGHBOUR	1.8	210				
211 Manitoba Maple	28.41	12.0	Fair	Asymmetric	Growing into Fence	REMOVE	BOUNDARY	NA	211				
212 Manitoba Maple	30.48	12.0	Fair	Asymmetric	Growing into Fence	REMOVE	BOUNDARY	NA	212				
213 Manitoba Maple	20.56	12.0	Fair	Asymmetric	Growing into Fence	REMOVE	BOUNDARY	NA	213				
214 Manitoba Maple	15.20	12.0	Fair	Asymmetric	Growing into Fence	PRESERVE	NEIGHBOUR	1.8	214				
215 Manitoba Maple	20.25	10.0	Fair	Asymmetric	Crowded by Adjacent Tree. On adjacent property	PRESERVE	NEIGHBOUR	1.8	215				
216 Manitoba Maple	25.0	10.0	Fair	Asymmetric	Crowded by Adjacent Tree. On adjacent property	PRESERVE	NEIGHBOUR	1.8	216				
217 Manitoba Maple	35.0	10.0	Fair	Asymmetric	Crowded by Adjacent Tree. On adjacent property	PRESERVE	NEIGHBOUR	2.4	217				
218 Manitoba Maple	15.25	10.0	Fair	Asymmetric	Crowded by Adjacent Tree. On adjacent property	PRESERVE	NEIGHBOUR	1.8	218				
219 Manitoba Maple	30.40	10.0	Fair	Asymmetric	Crowded by Adjacent Tree; Minor dieback	PRESERVE	NHS LANDS	2.4	219				
220 Manitoba Maple	45.0	10.0	Fair	Asymmetric	Crowded by Adjacent Tree; Minor dieback	PRESERVE	NHS LANDS	3.0	220				
221 Manitoba Maple	20.25	10.0	Fair	Asymmetric	Crowded by Adjacent Tree; Minor dieback	PRESERVE	NHS LANDS	1.8	221				

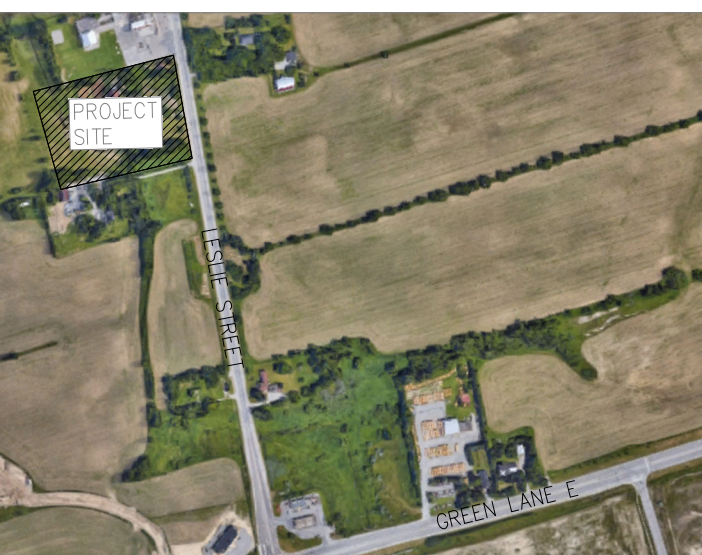
NOTE:
ANY WORKS ENCROACHING INTO MINIMUM TREE PROTECTION ZONE SHALL BE CONDUCTED UNDER THE SUPERVISION OF THE CONSULTING ARBORIST, UTILIZING GOOD ARBORICULTURAL PRACTICES.

NOTE:
ANY TREE THAT IS A COOWNED/ BOUNDARY TREE WILL REQUIRE WRITTEN CONSENT FROM THE NEIGHBOURING PROPERTY OWNER PRIOR TO INJURY AND/OR REMOVAL. IT IS THE APPLICANT'S RESPONSIBILITY TO OBTAIN NECESSARY CONSENT PRIOR TO UNDERTAKING ANY TREE INJURY OR DESTRUCTION.

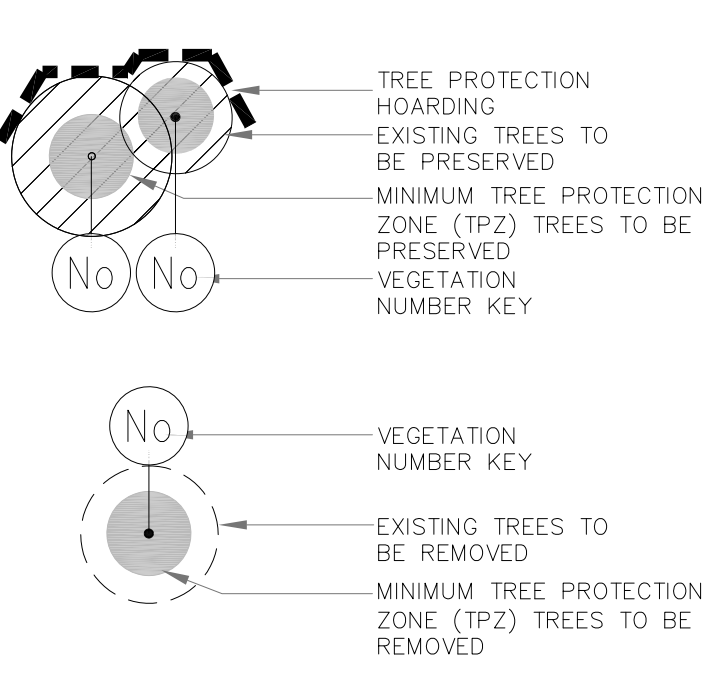
GENERAL NOTES

- VERIFY ALL DIMENSIONS.
- DO NOT SCALE DRAWINGS.
- REPORT ANY DISCREPANCIES, DISCOVERED ERRORS, OR OMISSIONS TO THE LANDSCAPE ARCHITECT BEFORE PROCEEDING.
- IT IS ADVISED THAT CONTRACTORS CONTACT THE LANDSCAPE ARCHITECT PRIOR TO CONSTRUCTION TO ENSURE THE USE OF THE LATEST REVISED DRAWINGS.
- DRAWINGS AND SPECIFICATIONS ARE THE PROPERTY OF THE LANDSCAPE ARCHITECT.

KEY MAP

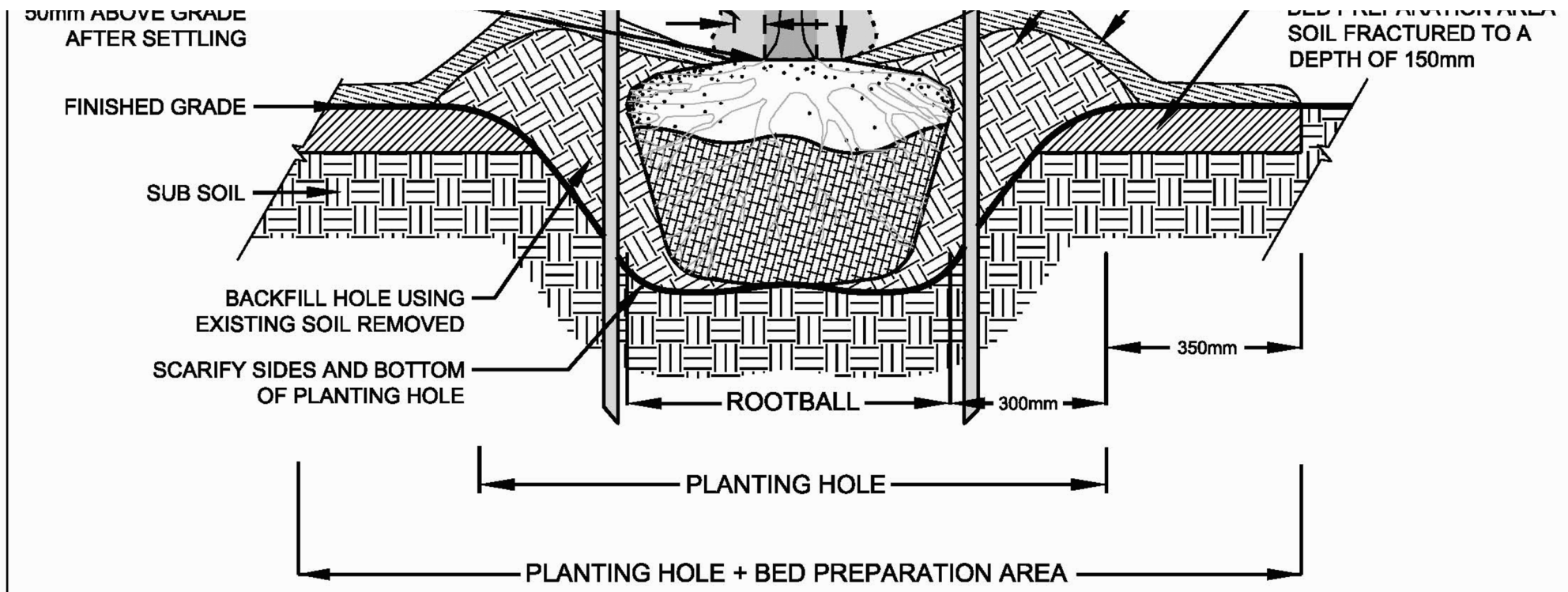


LEGEND



DRAWING LIST

200- LANDSCAPE DETAILS				
201- LANDSCAPE DETAILS				
11	APR 01, 2025	ISSUED FOR SPA RESUBMISSION	B.B.	
10	MAR 11th, 2025	ISSUED FOR SPA RESUBMISSION	B.B.	
9	APR 30th, 2024	UPDATED CLIENT NAME AND 191 NUMBER	B.B.	
8	APR 15th, 2024	ISSUED FOR SPA RESUBMISSION	B.B.	
7	FEB 15, 2024	ISSUED FOR SPA	B.B.	
6	FEB 14, 2024	ISSUED FOR COORDINATION AND REVIEW	B.B.	
5	FEB 09, 2024	ISSUED FOR COORDINATION AND REVIEW	B.B.	
4	SEPT 14, 2021	ISSUED FOR SUBMISSION	B.B.	
3	AUG. 25, 2021	ISSUED FOR SUBMISSION	B.B.	
2	AUG. 20, 2021	ISSUED FOR COORDINATION AND REVIEW	A.S.	
1	AUG. 10, 2021	ISSUED FOR COORDINATION AND REVIEW	N.S.	
No.	DATE.	REVISION.		BY.



NOTES

- REFER TO YORK REGION SPECIFICATIONS FOR COMPLETE PLANTING REQUIREMENTS
- INSTALL APPROVED MYCORRHIZAL INOCULANT
- ELIMINATE AIR POCKETS AND SECURE STEM IN VERTICAL POSITION BY TAMPING BACKFILL IN PLACE
- CUT AND REMOVE ALL WIRE, ROPE, BURLAP AND TWINE FROM THE TOP 1/3 OF THE ROOTBALL
- SOAK THE ROOTBALL AND BACKFILL AREA WITH 40 LITRES OF WATER AFTER PLANTING
- INSTALL APPROVED TREE WATERING BAG
- PRUNE TO REMOVE DEAD, BROKEN AND DAMAGED BRANCHES

Environmental Services

CALIPER DECIDUOUS TREE PLANTING DETAIL FOR SOFTSCAPE BOULEVARDS

DATE:	JANUARY 2022	SCALE:	N.T.S.
REV.	X	X	NHF - 100

TREE PROTECTION ZONE (TPZ)

PLEASE NOTE THAT ANY:
GRADE CHANGE
DUMPING
STORAGE
UNAUTHORIZED ENTRY
TREE INJURY OR REMOVAL
DISTURBANCE OF ANY KIND
IS STRICTLY PROHIBITED WITHIN THIS TPZ

THIS BARRIER SHALL NOT BE DAMAGED OR MOVED

PLEASE REPORT ANY ENTRY INTO THIS ZONE
TO NATURAL HERITAGE AND FORESTRY:
Access York -
1-877-464-9675 ext. 73000
accessyork@york.ca

MIN.	400 MM
MIN.	600 MM

TREE PROTECTION ZONE (TPZ) SIGNAGE

DATE:	JANUARY 2022	SCALE:	N.T.S.
REV.	X	X	NHF - 401

STANDARD TREE PROTECTION NOTES

DATE:	JANUARY 2022	SCALE:	N.T.S.
REV.	X	X	NHF - 402

General

- York Region Street Tree and Forest Preservation Guidelines (the "Guidelines") must be implemented where site disturbance is proposed in the Regional road allowance and any Region-owned street trees and/or natural vegetation is within 10m or less of the limit of proposed site disturbance.
- These Guidelines must also be implemented where site disturbance is proposed outside of the Regional road allowance and Region-owned street trees and/or natural vegetation are situated within 10m of the limit of potential site disturbance and/or where Region-owned street trees and/or natural vegetation are situated more than 10m but may be adversely impacted by the proposed site disturbance.
- All tree preservation measures shall be in accordance with the Guidelines.
- All proposed tree preservation measures must be described in the Arborist Report and shown on the Tree Protection Plan and approved by York Region Environmental Services Department, Natural Heritage and Forestry. Refer to the Guidelines for tree inventory, tree removal compensation and other requirements.
- All tree protection zone barriers shall be installed prior to any site disturbance, including tree removals, and must remain in good repair for the duration of construction.
- At the sole discretion of York Region Natural Heritage and Forestry, any existing trees that die or exhibit a decline in health prior to final acceptance shall be compensated for in accordance with the Guidelines.
- York Region Natural Heritage and Forestry shall be notified when tree protection measures have been initiated, and before tree removals, if applicable.

Tree Protection Zone (TPZ)

- A minimum Tree Protection Zone (TPZ) shall be established around every tree to be preserved in accordance with the Guidelines and a York Region-approved Tree Protection Plan.
- No entry or activity shall be permitted within the TPZ without prior written approval of York Region Natural Heritage and Forestry.
- Prohibited activities within the TPZ include but are not limited to installation or attachment of any items to the tree, operation of equipment or machinery, storage of equipment, machinery or materials, access by any personnel, placement of trailers, temporary buildings or structures, building, storage or dumping of fuels, chemicals or other contaminants, stockpiling of soil, digging, trenching, or excavation, and/or removal or existing trees.
- Permitted activities within the TPZ, with prior written approval of York Region Natural Heritage and Forestry and overseen by a qualified tree professional, include but are not limited to encroachment activities related to tree protection provisions such as canopy clearance pruning, root-sensitive excavation and root pruning, tree stem protection and other arboricultural maintenance.

Tree Protection Zone (TPZ) Barrier

- A Tree Protection Zone (TPZ) barrier shall be constructed around the TPZ of every tree to be preserved in accordance with the Guidelines and a York Region-approved Tree Protection Plan. The TPZ barrier shall follow York Region standard drawing Tree Protection Zone (TPZ) Barrier 401-407.
- Where trees to be protected are located in close proximity to each other, the TPZ barrier shall be installed to protect trees in contiguous groups.
- The TPZ barrier shall be installed prior to commencement of any site disturbance. Site disturbance shall not commence until the installation of all TPZ barriers has been completed and has been verified and approved by York Region or its designee.
- The TPZ barrier shall be constructed on a 2x4 frame. The height of the frame shall measure a minimum of 1.2m (4 feet), and the width of individual frame sections shall not exceed 2.4m (8 feet).
- The frame shall be supported by tapered 2x4 support legs installed inside the TPZ, secured to the frame using steel straps, and secured to the ground using a wooden stake installed at minimum of 1200mm into the ground. A minimum of 1 support leg shall be installed per 2.4m (8 feet) of linear TPZ barrier distance, or per frame section.
- Framed construction fencing is the primary method for TPZ barrier construction. Orange construction safety fencing shall be securely and tightly straped to the outside of the TPZ barrier frame to construct the framed construction fencing TPZ barrier type. Other fencing materials (e.g., chicken wire, green snow fence, etc.) shall not be used.
- Solid hoarding shall be installed where there is a significant risk of fill or other material being shed against the TPZ barrier, or where heavy machinery is to be operated in close proximity to the TPZ barrier. Plywood or oriented strand board (OSB) sheathing with a minimum thickness of 3/8" shall be affixed using wood screws to the outside of the TPZ barrier frame to construct the solid hoarding TPZ barrier type. Hoarding shall also be secured to the ground using a wooden stake installed at minimum of 1200mm into the ground, and as approved in the Arborist Report, all barrier fencing shall be installed using a "no-dig" method as described in the Guidelines.

Tree Protection Zone (TPZ) Signage

- All Tree Protection Zone (TPZ) signage shall be in accordance with the Guidelines.
- Signage shall follow York Region standard drawing Tree Protection Zone (TPZ) Signage 401-407 and shall be installed on at least two sides of the TPZ barrier. The distance between individual signs shall not exceed 10m on any one side of the TPZ barrier.

Maintenance and Inspection

- TPZ barriers shall remain in place and in good working order and appearance throughout the duration of site disturbance until completion of all works.
- TPZ barriers shall not be moved, modified, or relocated at any time without the approval of York Region or its designee.
- TPZ barriers shall be inspected by a qualified tree professional once weekly or on a schedule approved by York Region or its designee.
- By York Region or its designee, any deficiencies shall be noted in writing and any TPZ barriers found to be in substandard condition shall be repaired, modified or replaced as necessary within 48 hours of formal notification by York Region or its designee.

Encroachment

- All encroachment work shall be in accordance with the Guidelines and a York Region-approved Tree Protection Plan and Arborist Report.
- A qualified tree professional must be present for all encroachment work within the TPZ.
- York Region Natural Heritage and Forestry shall be notified with 24 hours of notice prior to work occurring within the TPZ.
- TPZ barriers shall be placed at the limit of encroachment and not be moved at any time during construction unless under the supervision of a qualified tree professional.
- Below-grade encroachment, root sensitive excavation and root pruning shall be undertaken prior to confirmed excavation as per standard drawing NHF-403.
- At-grade encroachment: root zone compaction protection provisions must be followed as per standard drawing NHF-405.
- Above-grade encroachment: tree stem protection provisions must be followed as per standard drawing NHF-405.
- After the completion of construction, soil compaction and restoration provisions shall be followed when deemed necessary by York Region Natural Heritage and Forestry.

Pruning

- All pruning work shall be in accordance with the Guidelines and a York Region-approved Tree Protection Plan and Arborist Report.
- No tree branches or tree roots shall be pruned without written approval of York Region or its designee.
- Approved pruning must follow encroachment provisions and be undertaken by an ISA Certified Arborist or an ISA Certified Arborist in Training who holds a valid ISA certification and is insured for liability.
- No other trades personnel are permitted to prune tree branches or tree roots.

Other

- Other tree preservation measures may be required to be implemented whenever site disturbance is proposed, anticipated or likely to occur within or in close proximity to Tree Protection Zones (TPZs) and trees to be preserved. Other acceptable tree preservation measures are described in the Guidelines.

Environmental Services

ROOT-SENSITIVE EXCAVATION AND ROOT PRUNING

DATE:	JANUARY 2022	SCALE:	N.T.S.
REV.	X	X	NHF - 403

1. EXISTING CONDITIONS (TYP.)

2. ROOT-SENSITIVE EXCAVATION (TYP.)

3. ROOT PRUNING (TYP.)

4. CONVENTIONAL EXCAVATION (TYP.)

NOTES

- REFER TO YORK REGION STREET TREE AND FOREST PRESERVATION GUIDELINES FOR COMPLETE TREE PRESERVATION REQUIREMENTS.
- NO ROOTS GREATER THAN 80mm SHALL BE PRUNED WITHOUT AUTHORIZATION OF YORK REGION OR ITS DESIGNATE.
- PROLONGED EXPOSURE OF TREE ROOTS MUST BE AVOIDED.
- ROOT-SENSITIVE EXCAVATION AND ROOT PRUNING SHALL BE COMPLETED BY A QUALIFIED TREE PROFESSIONAL, WITH PRIOR WRITTEN APPROVAL BY YORK REGION OR ITS DESIGNATE.
- UPON COMPLETION, DOCUMENTATION OF THESE ACTIVITIES SHALL BE SUBMITTED TO YORK REGION.

Environmental Services

ROOT ZONE COMPACTION PROTECTION

DATE:	JANUARY 2022	SCALE:	N.T.S.
REV.	X	X	NHF - 404

LIGHT ROOT ZONE COMPACTION PROTECTION

LIGHT ROOT ZONE COMPACTION PROTECTION SHALL BE IMPLEMENTED WHERE LIMITED NON-VEHICULAR ACCESS IN THE TPZ IS ANTICIPATED (E.G., OCCASIONAL FOOT TRAFFIC, WHEELBARROWS).

MODERATE ROOT ZONE COMPACTION PROTECTION

MODERATE ROOT ZONE COMPACTION PROTECTION SHALL BE IMPLEMENTED WHERE MORE FREQUENT NON-VEHICULAR ACCESS OR OCCASIONAL LIGHT VEHICLE (E.G., PICKUP TRUCK) ACCESS ACROSS THE TPZ IS ANTICIPATED.

HEAVY ROOT ZONE COMPACTION PROTECTION

HEAVY ROOT ZONE COMPACTION PROTECTION SHALL BE IMPLEMENTED IN AREAS WHERE REGULAR VEHICLE ACCESS OR SIMILAR IMPACTS ARE ANTICIPATED IN THE TPZ.

NOTES

- REFER TO YORK REGION STREET TREE AND FOREST PRESERVATION GUIDELINES FOR COMPLETE TREE PRESERVATION REQUIREMENTS.
- ANY TPZ BARRIER ENCROACHMENT MUST BE PERMITTED IN WRITING BY YORK REGION OR ITS DESIGNATE.

Environmental Services

TREE STEM PROTECTION

DATE:	JANUARY 2022	SCALE:	N.T.S.
REV.	X	X	NHF - 405

NOTES

- REFER TO YORK REGION STREET TREE AND FOREST PRESERVATION GUIDELINES FOR COMPLETE TREE PRESERVATION REQUIREMENTS.
- TREE STEM PROTECTION SHALL ONLY BE INSTALLED WHERE TPZ ENCROACHMENT IS APPROVED IN WRITING BY YORK REGION OR ITS DESIGNATE AND WHERE THERE IS A REASONABLE POSSIBILITY OF ACCIDENTAL IMPACT UPON THE MAIN STEM OR SCAFFOLD BRANCHES OF A TREE TO BE PRESERVED.

1. TREE PROTECTION HOARDING
TOWN OF RICHMOND HILL

N.T.S.

GENERAL NOTES

- VERIFY ALL DIMENSIONS.
- DO NOT SCALE DRAWINGS.
- REPORT ANY DISCREPANCIES, DISCOVERED ERRORS, OR OMISSIONS TO THE LANDSCAPE ARCHITECT BEFORE PROCEEDING.
- IT IS ADVISED THAT CONTRACTORS CONTACT THE LANDSCAPE ARCHITECT PRIOR TO CONSTRUCTION TO ENSURE THE USE OF THE LATEST REVISED DRAWINGS.
- DRAWINGS AND SPECIFICATIONS ARE THE PROPERTY OF THE LANDSCAPE ARCHITECT.

KEY MAP

DRAWING LIST

No.	DATE	REVISION	BY
11	APR 01, 2025	ISSUED FOR SPA RESUBMISSION	B.B.
10	MAR 11th, 2025	ISSUED FOR SPA RESUBMISSION	B.B.
9	APR 30th, 2024	UPDATED CLIENT NAME AND 19T NUMBER	B.B.
8	APR 15th, 2024	ISSUED FOR SPA RESUBMISSION	B.B.
7	FEB 15, 2024	ISSUED FOR SPA	B.B.
6	FEB 14, 2024	ISSUED FOR COORDINATION AND REVIEW	B.B.
5	FEB 09, 2024	ISSUED FOR COORDINATION AND REVIEW	B.B.
4	SEPT 14, 2021	ISSUED FOR SUBMISSION	B.B.
3	AUG. 25, 2021	ISSUED FOR SUBMISSION	B.B.
2	AUG. 20, 2021	ISSUED FOR COORDINATION AND REVIEW	A.S.
1	AUG. 10, 2021	ISSUED FOR COORDINATION AND REVIEW	N.S.

It is the responsibility of the Contractor and/or Owner to ensure that the drawings with the latest revisions are used for construction.

SBK STRYBOS BARRON KING LANDSCAPE ARCHITECTURE

1770 HURONTARIO STREET, SUITE 320
MISSISSAUGA, ONTARIO, L4R 3G5
T: 416.695.4949 F: 905.712.3101
WWW.STRYBOS.COM

PROJECT: THE ACORN DEVELOPMENT CORPORATION
BLOCK 23 - 19T 14001, STACKED TOWNHOUSES
EAST GWILLIMBURY, ONTARIO

DRAWING TITLE: EXISTING TREE INVENTORY AND PRESERVATION DETAILS

SCALE:	N.T.S.	PROJECT No.	5647
DATE:	JULY 2021	DRAWING No.	V101
DRAWN BY:	K.K.		
CHECKED BY:	B.B.		