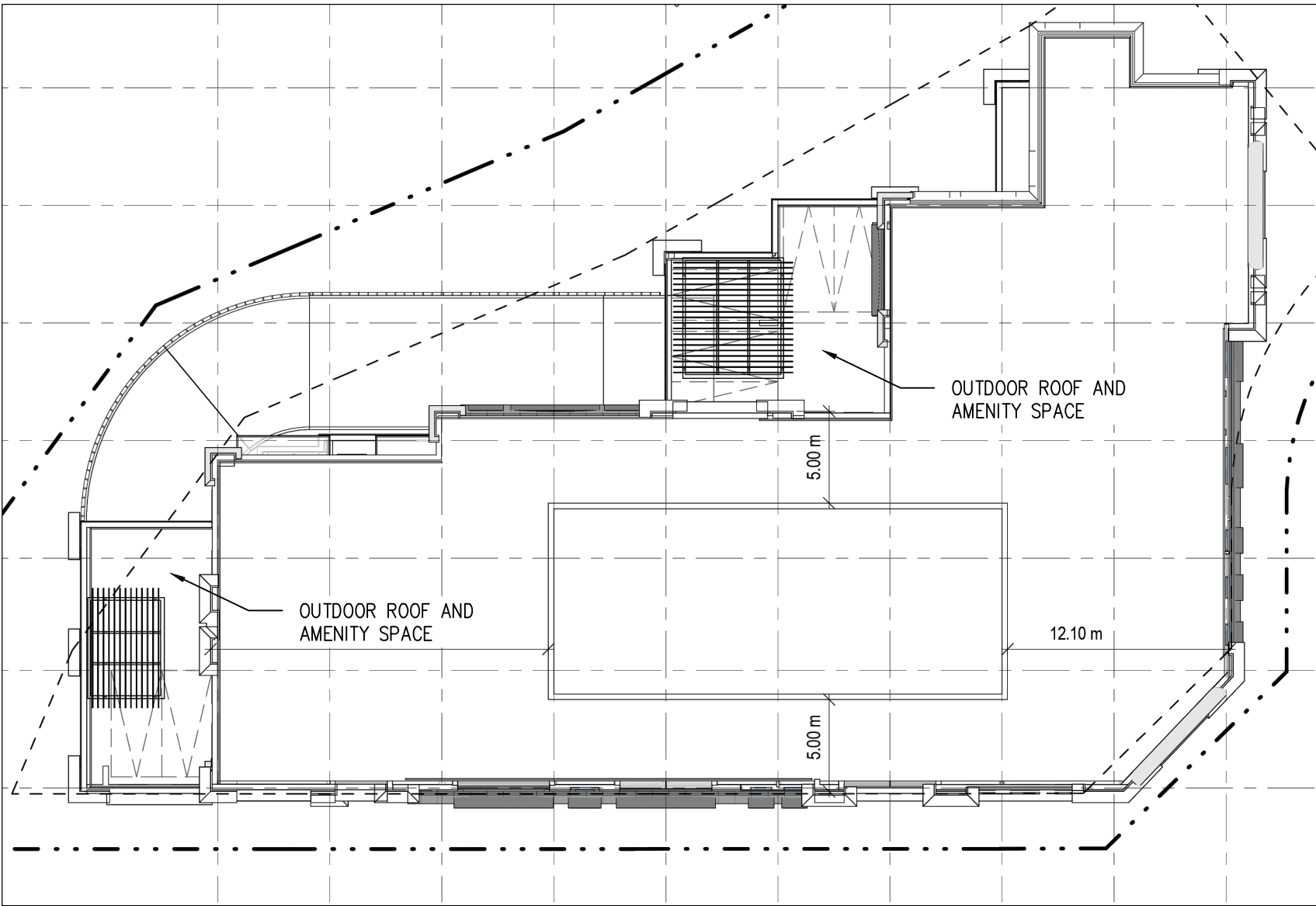
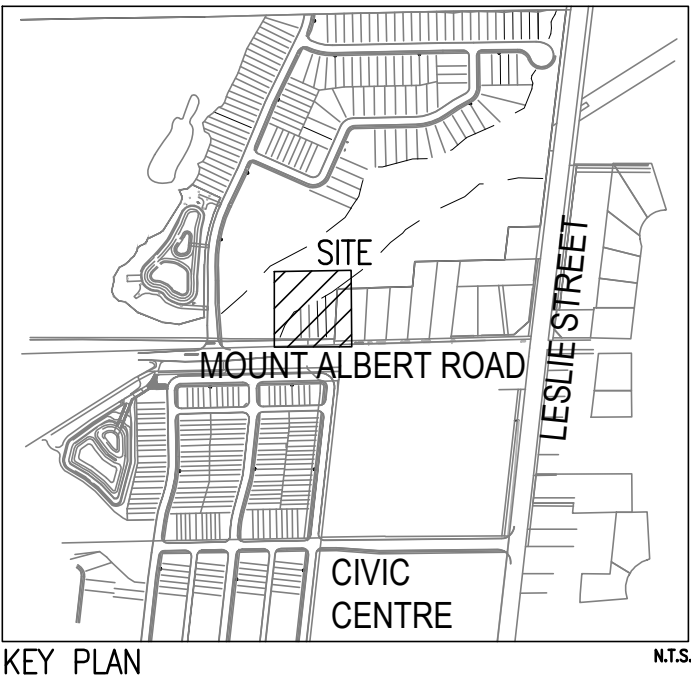


PROPOSED PLANT LIST							
KEY QTY	BOTANICAL NAME	COMMON NAME	CAL.	COND	SPACING	NATIVE	REGION
DECIDUOUS TREES							
A	- ACER RUBRUM	RED MAPLE	60	B&B	AS SHOWN	YES	YES
C	- ACER SACCHARUM	SUGAR MAPLE	60	B&B	AS SHOWN	YES	YES
E	- CELTIS OCCIDENTALIS	COMMON HACKBERRY	60	B&B	AS SHOWN	YES	YES
H	- QUERCUS MACROCARPA	BURR OAK	60	B&B	AS SHOWN	YES	YES
K	- Ostrya virginiana	IRONWOOD/ HOP HORNBEE	60	B&B	AS SHOWN	YES	YES
L	- Tilia americana	BASSWOOD	60	B&B	AS SHOWN	YES	YES
DECIDUOUS SHRUBS							
Cs	- CORNUS SERICEA	RED OSIER DOGWOOD	60	POTTED		YES	YES
DI	- DIERVILLA LONICERA	BUSH HONEYSUCKLE	60	POTTED		YES	YES
Hk	- HYPERICUM KALIMANUM	ST. JOHN'S WORT	60	POTTED		YES	YES
PF	- POTENTILLA FRUTICOSA	SHRUBBY CINQUEFOIL	60	POTTED		YES	YES
Rb	- ROSA BLANDA	SMOOTH WILD ROSE	60	POTTED		YES	YES
So	- SYMPHORICARPOS ALBUS VAR. ALBUS	SNOWBERRY	60	POTTED		YES	YES
CONIFEROUS TREES							
To	- THUJA OCCIDENTALIS	WHITE CEDAR	175	B&B		YES	YES
MULTI-STEM TREES							
AL	- AMELANCHIER LAEVIS	ALLEGHENY SERVICEBERRY	175	W.B MULTI-STEM		YES	YES
OC	- CERIS CANADENSIS	EASTERN REDBUD	175	W.B MULTI-STEM		YES	YES
PV	- PRUNUS VIRGINIANA	CHOCHECHERRY	175	W.B MULTI-STEM			
PERENNIALS							
cl	- COREOPSIS LANCEOLATA	LANCE-LEAVED TICKSEED	1 gal.	POTTED		YES	YES
mf	- MONARDA FISTULOSA	WILD BERGAMOT BEE-BALM	1 gal.	POTTED		YES	YES
rh	- RUDBECKIA HIRTA	BLACK EYED SUSAN	1 gal.	POTTED		YES	YES
hs	- HEMEROCALLIS	STELLA DE ORO DAYLILY	1 gal.	POTTED			
ss	- SCHIZACHYRIUM SCOPARIUM	LITTLE BLUESTEM	1 gal.	POTTED			
vh	- VERBENA HASTATA	BLUE VERVAIN	1 gal.	POTTED		YES	YES
*	- PARTHENOCESSUS QUINQUEFOLIA	VIRGINIA CREEPER	1 gal.	POTTED			



1 ROOF PLAN
N.T.S.



PLANTING SPECIES MAY BE SUBSTITUTED AT TIME OF PLANTING, SUBJECT TO SPECIES AVAILABILITY AND TOWN APPROVAL.

SITE CONDITIONS, SERVICES AND UTILITIES MAY DICTATE THAT PLANTING LOCATIONS MAY BE ADJUSTED ON SITE.

REFER TO ENGINEERING DRAWINGS FOR GRADING, SERVICING AND UTILITY INFORMATION.

REFER TO SITE PLAN FOR DETAILED ARCHITECTURAL INFORMATION.

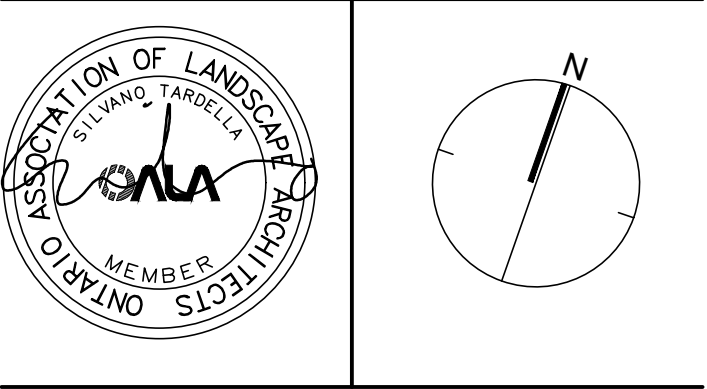
LEGEND

- FENCING
- 1.8m HIGH CHAIN LINK FENCE
- PLANTING
- REGIONAL TREE
- DECIDUOUS TREE
- MULTI-STEM SHRUB
- CONIFEROUS TREE
- SHRUB PLANTING
- PERENNIAL PLANTING

SURFACE/ SITE FURNITURE

- SOD
- CONCRETE PAVING

-		
-		
-		
-		
3	Issued for Submission	Feb, 2025
2	Revised and Issued As Per Comments	Feb 04, 2025
1	Issued for Schematic Design Review	Dec 16, 2024
No.	Description	Date
Revision		
Town Approval Stamp		



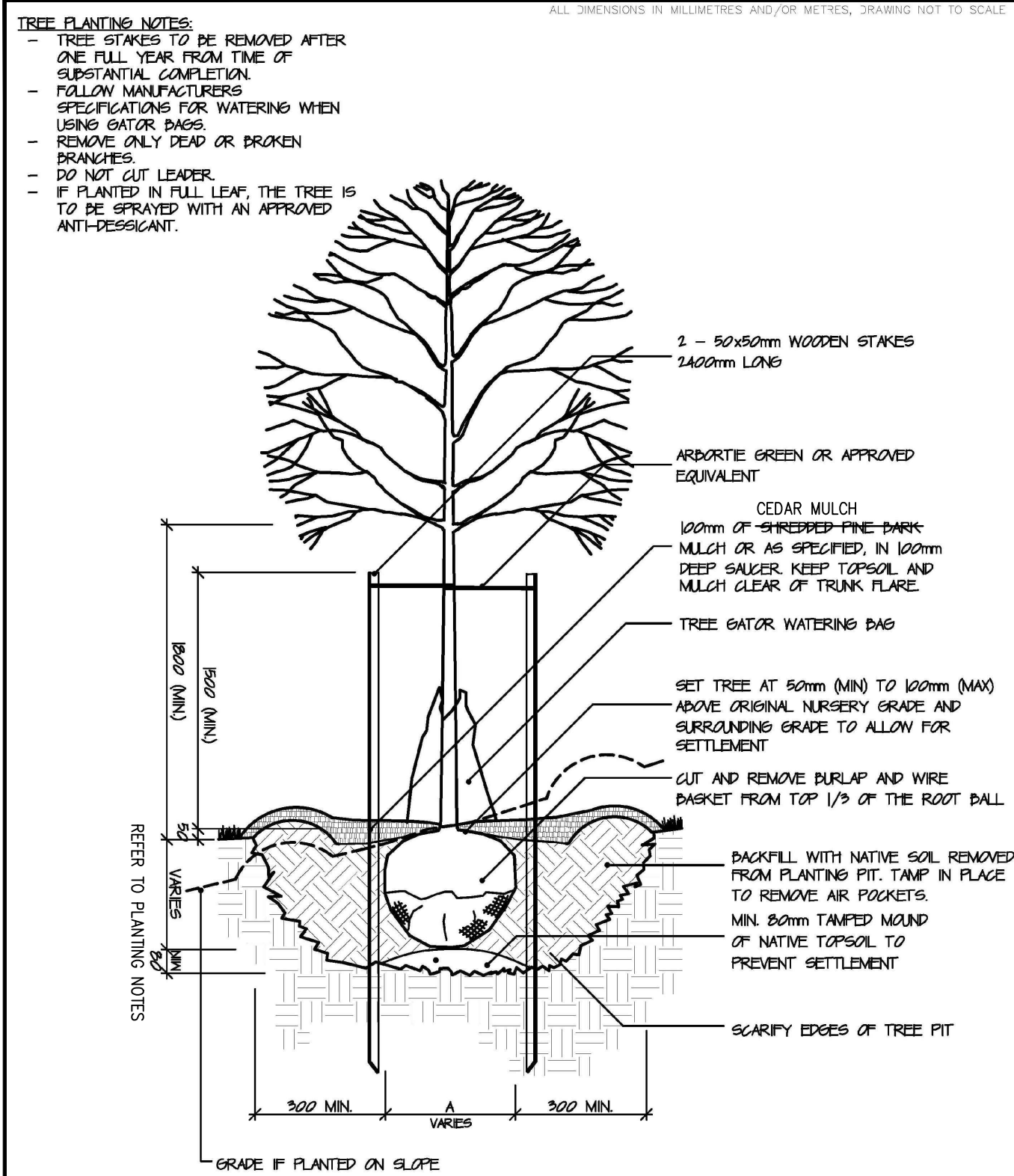
NAK
design strategies

421 RONGESVALLES AVENUE, TORONTO, ON M6R 2N1 CANADA
T 416.340.8700 F 416.340.7100 NAKDESIGNSTRATEGIES.COM
Project

SHARON CORNERS
(1402 MOUNT ALBERT ROAD)
TOWN OF EAST GWILLIMBURY

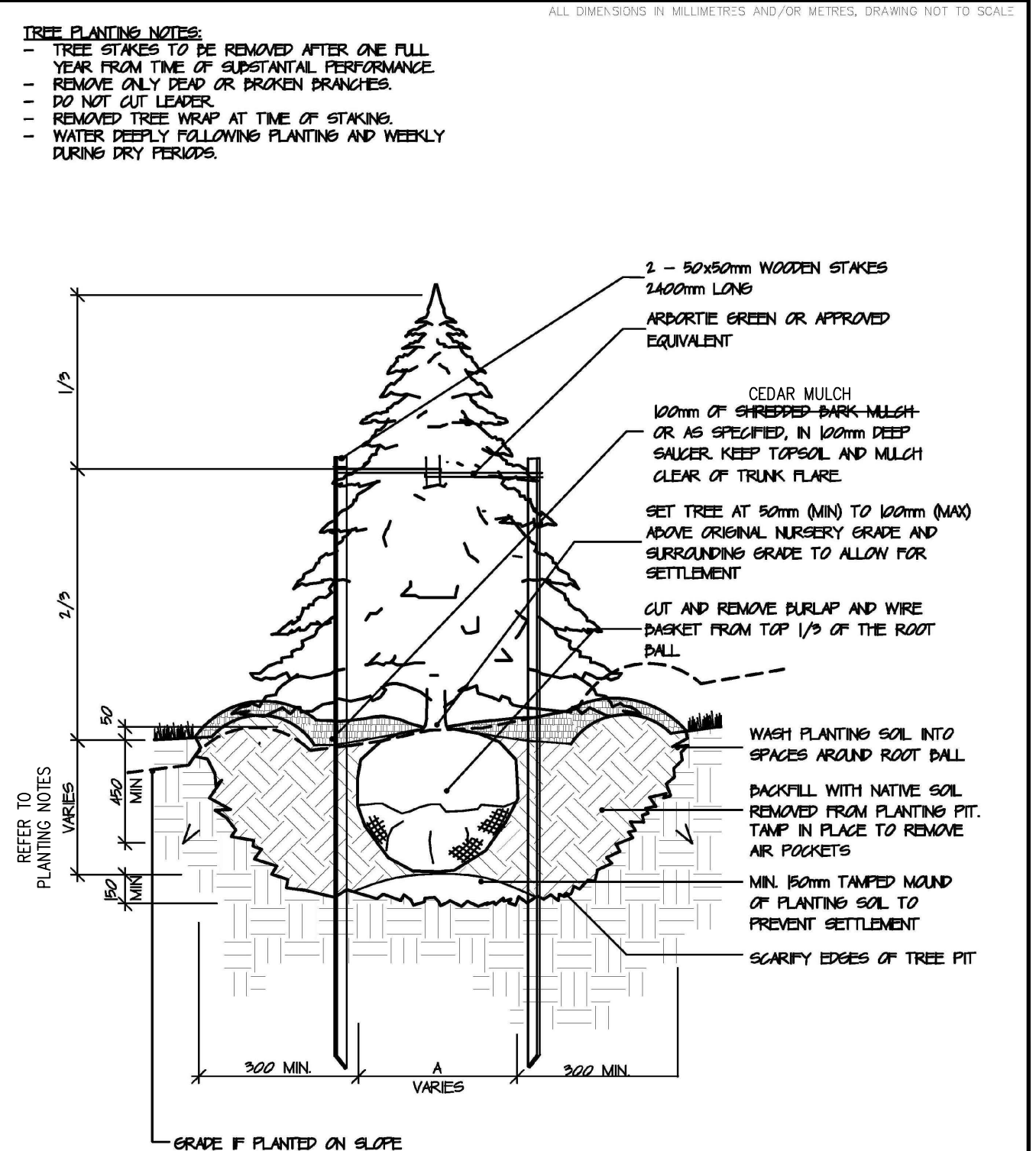
Title
LANDSCAPE MASTER PLAN

Date	Dec 2024	Sheet
Scale	1:200	
Drawn	NH/ XS	
Checked	NH	
Job No.	24-374	



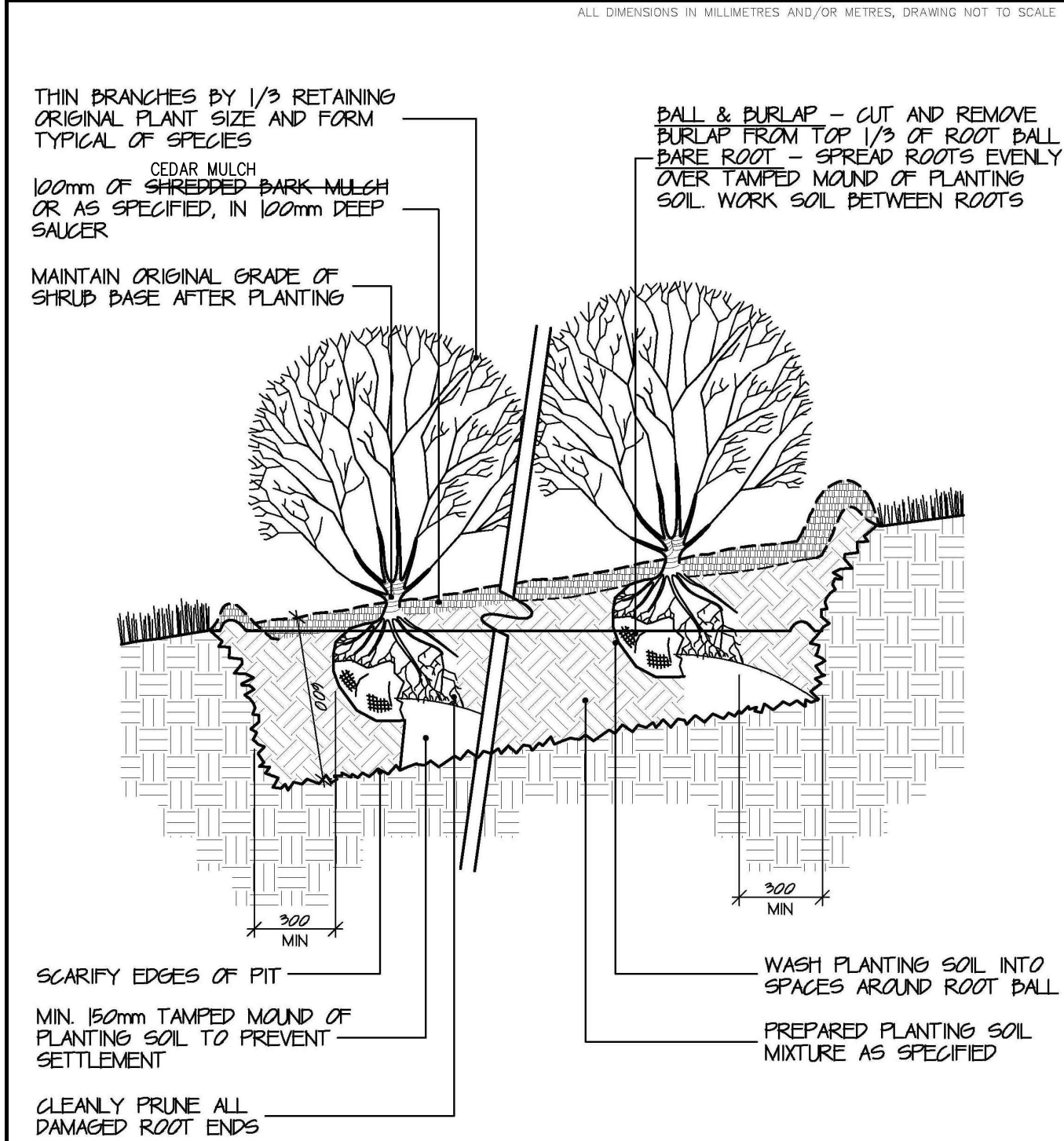
	DECIDUOUS TREE PLANTING	STANDARD DETAIL	
		APPROVED	DATE: MAR. 2015
		REVISION No.	201
		DATE	MAR. 2015

1 DECIDUOUS TREE PLANTING
N.T.S.



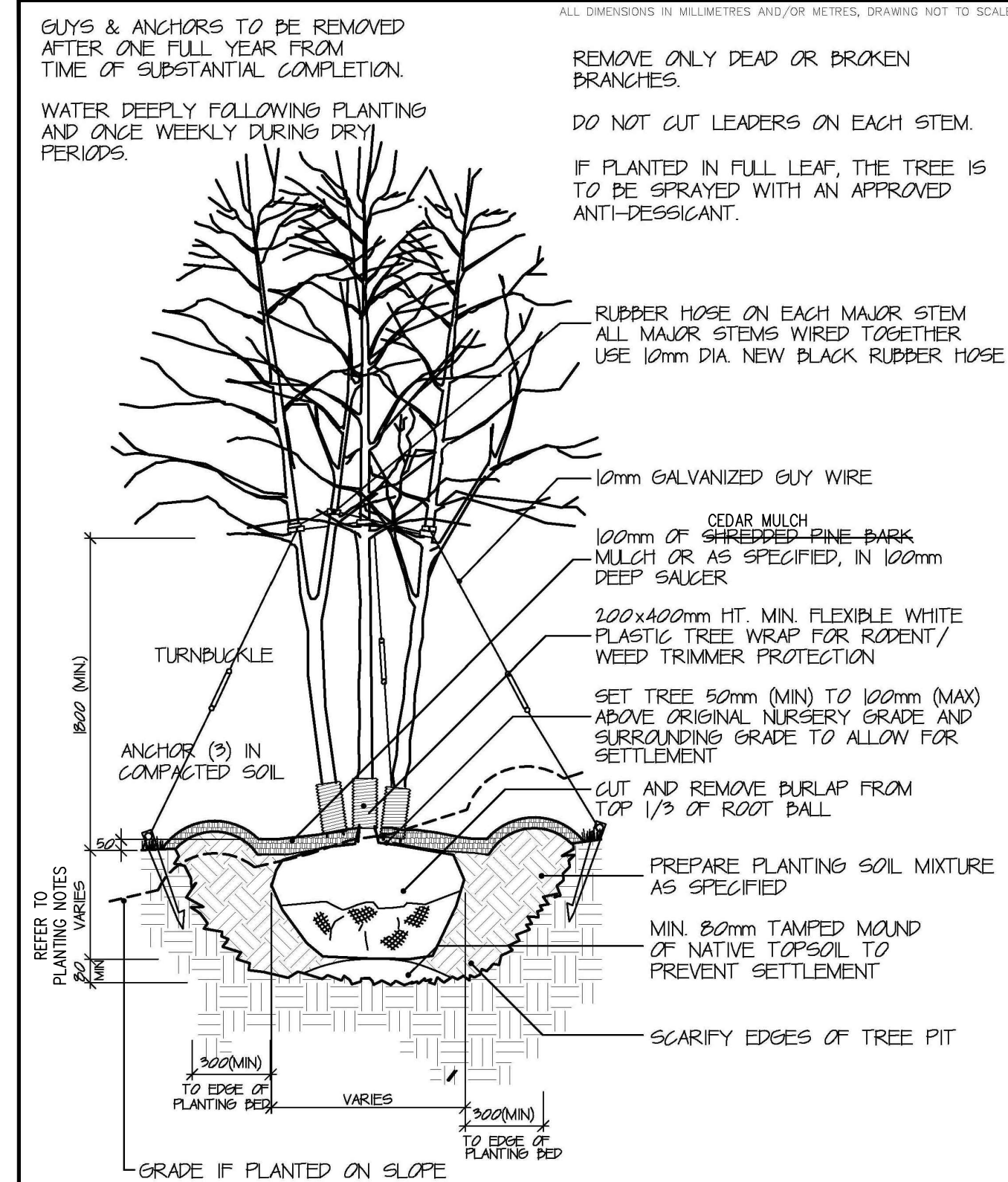
	CONIFEROUS TREE PLANTING	STANDARD DETAIL	
		APPROVED	DATE: MAR. 2015
		REVISION No.	202
		DATE	MAR. 2015

2 CONIFEROUS TREE PLANTING
N.T.S.



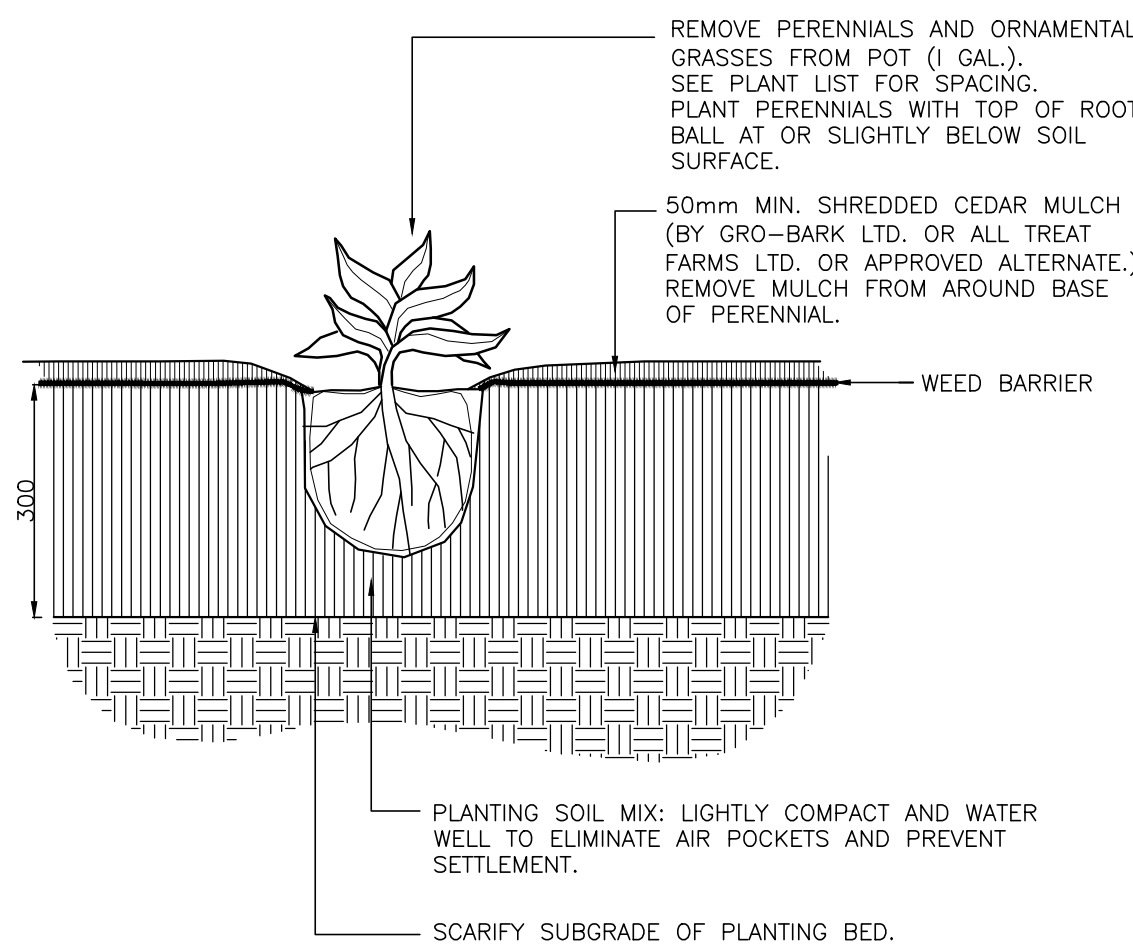
	SHRUB PLANTING - CONTINUOUS BED	STANDARD DETAIL	
		APPROVED	DATE: 2009
		REVISION No.	203
		DATE	2009

3 SHRUB PLANTING
N.T.S.



	MULTI-STEMMED DECIDUOUS TREE PLANTING SECURED WITH GUY WIRES	STANDARD DETAIL	
		APPROVED	DATE: 2009
		REVISION No.	205
		DATE	2009

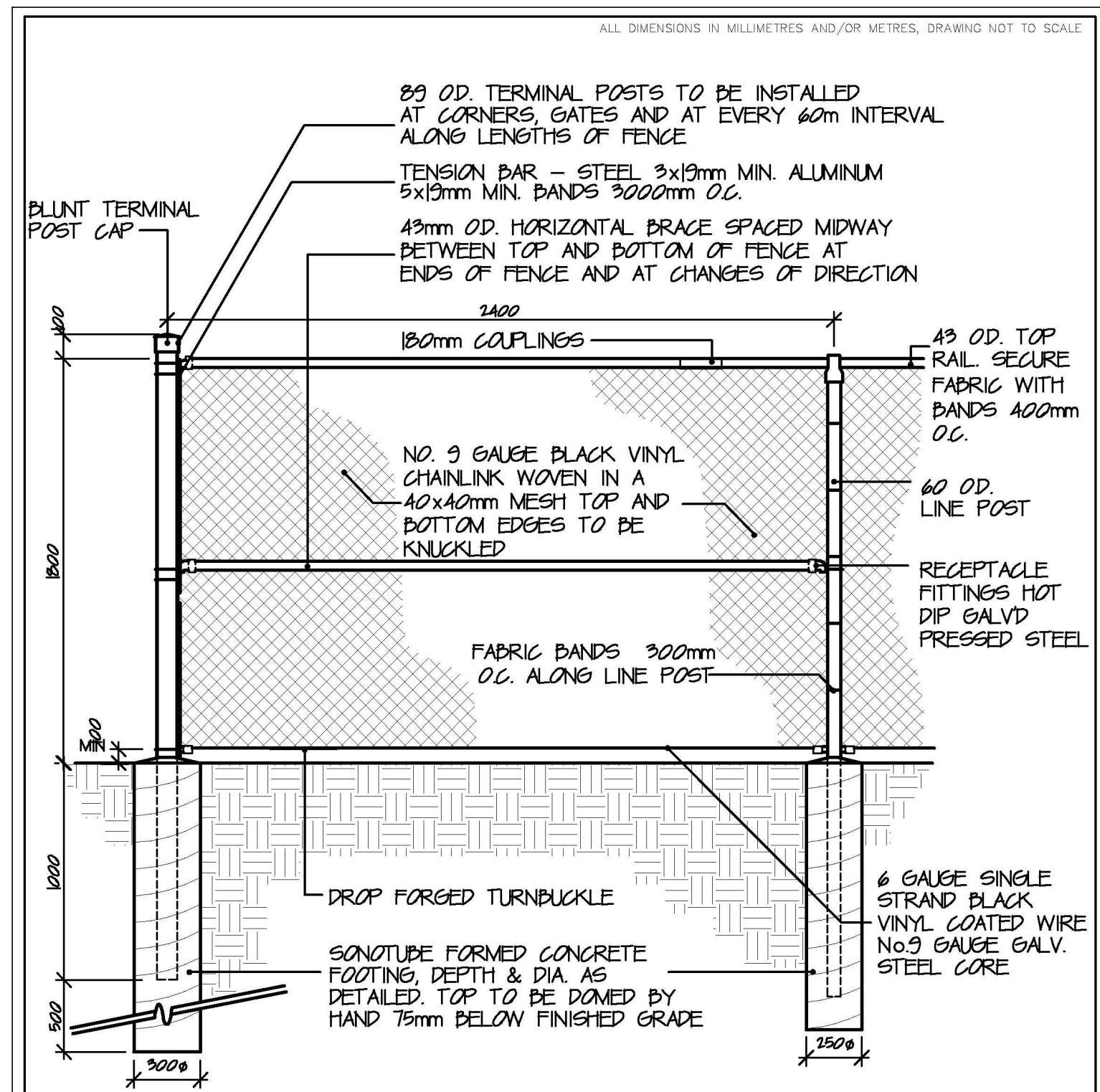
4 MULTI-STEMMED DECIDUOUS TREE PLANTING
N.T.S.



NOTES:
1. PLANTING SOIL MIXTURE (MECHANICALLY MIX) 6-PARTS SANDY LOAM, 2-PARTS WELL-ROTTED MANURE, 1-PART PEAT MOSS.
2. IF PLANT IS ROOT-BOUND AFTER REMOVING FROM POT, BREAK UP ROOT BALL WITH SHARP KNIFE. ENSURE ROOT BALL IS MOIST BEFORE PLANTING.
3. WEED BARRIER BY TERRAFIX OR APPROVED EQUIVALENT. OVERLAP MAT MIN. 150mm AND CUT AS REQUIRED TO INSTALL PLANTING.

5 PERENNIAL PLANTING
N.T.S.

- PLANTING NOTES
- CONTRACTOR TO VERIFY LOCATION OF ALL SERVICES PRIOR TO ANY EXCAVATION.
 - LOCATIONS OF ALL PLANT MATERIALS TO BE STAKED BY THE CONTRACTOR AND VERIFIED IN THE FIELD BY THE LANDSCAPE ARCHITECT AND THE MUNICIPALITY PRIOR TO THE EXCAVATION OF PITS.
 - ALL PLANT MATERIAL SHALL BE NURSERY GROWN STOCK UNLESS OTHERWISE NOTED.
 - ALL PLANTING BEDS AND TREE BASE TO BE COVERED WITH 100mm OF MULCH FOR TREES PLANTED WITHIN SITE LIMITS AND 150mm FOR TREES PLANTED WITHIN THE REGIONAL R.O.W. CONIFEROUS PLANTING TO BE CONTINUOUSLY MULCHED WHEN IN A BED.
 - ALL PLANT MATERIAL SHALL BE GUARANTEED FOR TWO YEARS FROM THE DATE OF PERFORMANCE ACCEPTANCE AS DETERMINED BY THE LANDSCAPE ARCHITECT AND THE MUNICIPALITY.
 - CONTRACTOR TO MAKE GOOD ALL EXISTING AREAS DAMAGED BY HIS WORK TO THE SATISFACTION OF THE LANDSCAPE ARCHITECT AND THE MUNICIPALITY.
 - THE MAINTENANCE GUARANTEE PERIOD SHALL EXTEND FOR TWO YEARS FROM THE DATE OF PERFORMANCE ACCEPTANCE.
 - PERIODIC REVIEWS OF PLANTING SHALL BE CARRIED OUT BY THE LANDSCAPE ARCHITECT AND THE MUNICIPALITY.
 - ALL WOODEN STAKES TO BE REMOVED AT THE ONE YEAR INTERIM INSPECTION UNLESS OTHERWISE DIRECTED BY THE CITY REPRESENTATIVE.
 - ALL TREES SHALL BE INSTALLED WITH 200 X 400mm HEIGHT FLEXIBLE WHITE PLASTIC TREE WRAP FOR RODENT / WEED TRIMMER PROTECTION.
 - ALL SHRUB BEDS SHALL BE CONTINUOUS WITH NO SOD BETWEEN PLANTS. EDGES OF BEDS TO BE DEFINED BY SMOOTH FLOWING LINES.
 - HAND DIGGING OF TREE PITS OR MACHINE DIGGING IN COMBINATION WITH MANUAL EXPOSING OF UTILITY LINES AT REGULAR INTERVALS WILL BE REQUIRED.
 - SODDED AREAS WILL BE ACCEPTED BY THE LANDSCAPE ARCHITECT FOLLOWING PERFORMANCE ACCEPTANCE, PROVIDED:
 - SOD IS PROPERLY ESTABLISHED.
 - TURF IS FREE OF DEAD SPOTS AND WEEDS.
 - SODDED AREAS HAVE BEEN CUT WITHIN 24 HOURS PRIOR TO ACCEPTANCE INSPECTION.
 - MINIMUM OF 3 WEEKS HAVE ELAPSED FOLLOWING LAYING OF SOD.
 - A MINIMUM OF TWO CUTS HAVE TAKEN PLACE.
 - TEERRASEEDED AREAS WILL BE ACCEPTED BY THE LANDSCAPE ARCHITECT FOLLOWING PERFORMANCE ACCEPTANCE, PROVIDED:
 - SEEDS ARE PROPERLY ESTABLISHED.
 - TURF IS FREE OF DEAD SPOTS AND WEEDS.
 - NO SURFACE SOIL IS VISIBLE WHEN GRASS HAS BEEN CUT TO A HEIGHT OF 50mm.
 - SEEDS ARE HAVE BEEN CUT NO LESS THAN TWICE, THE LAST CUT BEING CARRIED OUT WITHIN 24 HOURS PRIOR TO THE ACCEPTANCE INSPECTION.
 - TOPSOIL TO BE FRIABLE NATURAL LOAM, RANGE 6.0pH TO 7.5pH CONTAINING A MINIMUM OF 4% ORGANIC MATTER, AND SHALL BE FREE OF STONES, ROOTS, LUMPS AND OTHER SOLID MATERIALS.
 - STOCKPILED TOPSOIL IS TO BE TESTED AND ANALYZED FOR N, P, K, Mg, SOLUBLE SALT CONTENT, ORGANIC MATTER AND pH VALUE, ETC.
 - ADJUST FERTILIZER REQUIREMENTS AND OTHER ADDITIVES FOR THE MAINTENANCE PROGRAM TO CONFORM TO SOIL TESTING REPORT RECOMMENDATIONS.
 - SPREAD TOPSOIL 600mm DEPTH FOR SHRUB BEDS. ALL SOFTSCAPE AREA TO HAVE MINIMUM 300mm DEPTH TOPSOIL. MIN 750 TOPSOIL DEPTH FOR ALL STREET TREES.
 - DEPTH OF TOPSOIL INDICATED IS COMPACTED DEPTH (COMPACT TO 85% STANDARD PROCTOR DENSITY).
 - SPREAD TOPSOIL ON PREPARED SUBGRADE OF THE WORK SITE.
 - FINE-GRADE TOPSOIL TO PRODUCE A SMOOTH EVEN SURFACE, FREE OF DEBRIS, SOD, STONES AND ROOTS OVER 25mm DIAMETER.
 - MEET AND MATCH ALL EXISTING SODDED AREAS, CURBS, SIDEWALKS, AREA DRAINS, AND CATCH-BASIN FRAMES, ASPHALT AND OTHER SURFACE AREAS IN A SMOOTH, UNIFORM LINE TO THE SATISFACTION OF THE LANDSCAPE ARCHITECT AND THE MUNICIPALITY.
 - A MINIMUM OF 4.0M IS NEEDED BETWEEN TREES AND PLANT BED EDGES TO ALLOW FOR MAINTENANCE EQUIPMENT TO CIRCULATE.

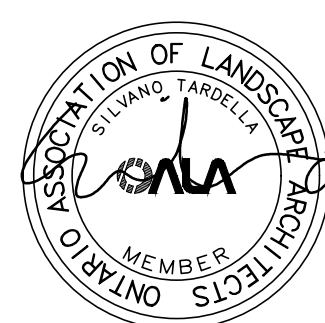


NOTES:
1 - ALL FENCE COMPONENTS AND FASTENERS TO BE BLACK.
2 - CONCRETE FOR FOOTINGS TO BE 20MPa AT 28 DAYS.
3 - ONLY SCHEDULE 40 GALVANIZED PIPES WILL BE ACCEPTED. COLOUR TO BE BLACK.
4 - ALL FENCES TO BE LOCATED 30mm WITHIN PUBLIC PROPERTY.
5 - FENCE FABRIC TO BE PLACED ON PUBLIC SIDE OF THE FENCE.

	1800mm HIGH CHAIN LINK FENCE	STANDARD DETAIL	
		APPROVED	DATE: 2014
		REVISION No.	501
		DATE	2014

6 1.8m HT. CHAIN LINK FENCE
N.T.S.

-		
-		
-		
-		
-		
3	Issued for Submission	Feb, 2025
2	Revised and Issued As Per Comments	Feb 04, 2025
1	Issued for Schematic Design Review	Dec 16, 2024
No.	Description	Date
Revision		
Town Approval Stamp		



NAK
design strategies

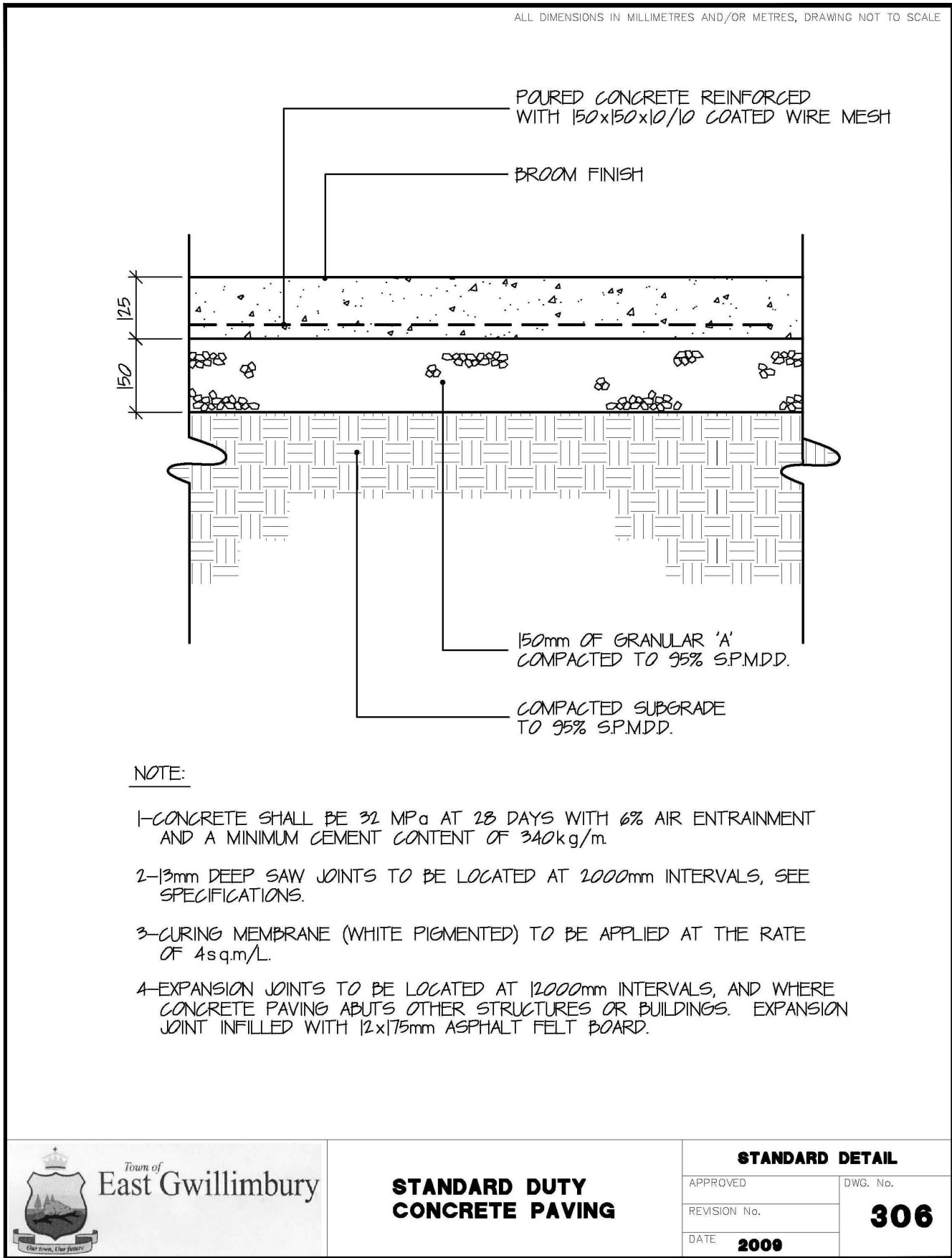
421 RONCESVALLES AVENUE, TORONTO, ON M6R 2N1 CANADA
T 416.340.8700 F 416.340.7100 NAKDESIGNSTRATEGIES.COM
Project

SHARON CORNERS
(1402 MOUNT ALBERT ROAD)
TOWN OF EAST GWILLIMBURY

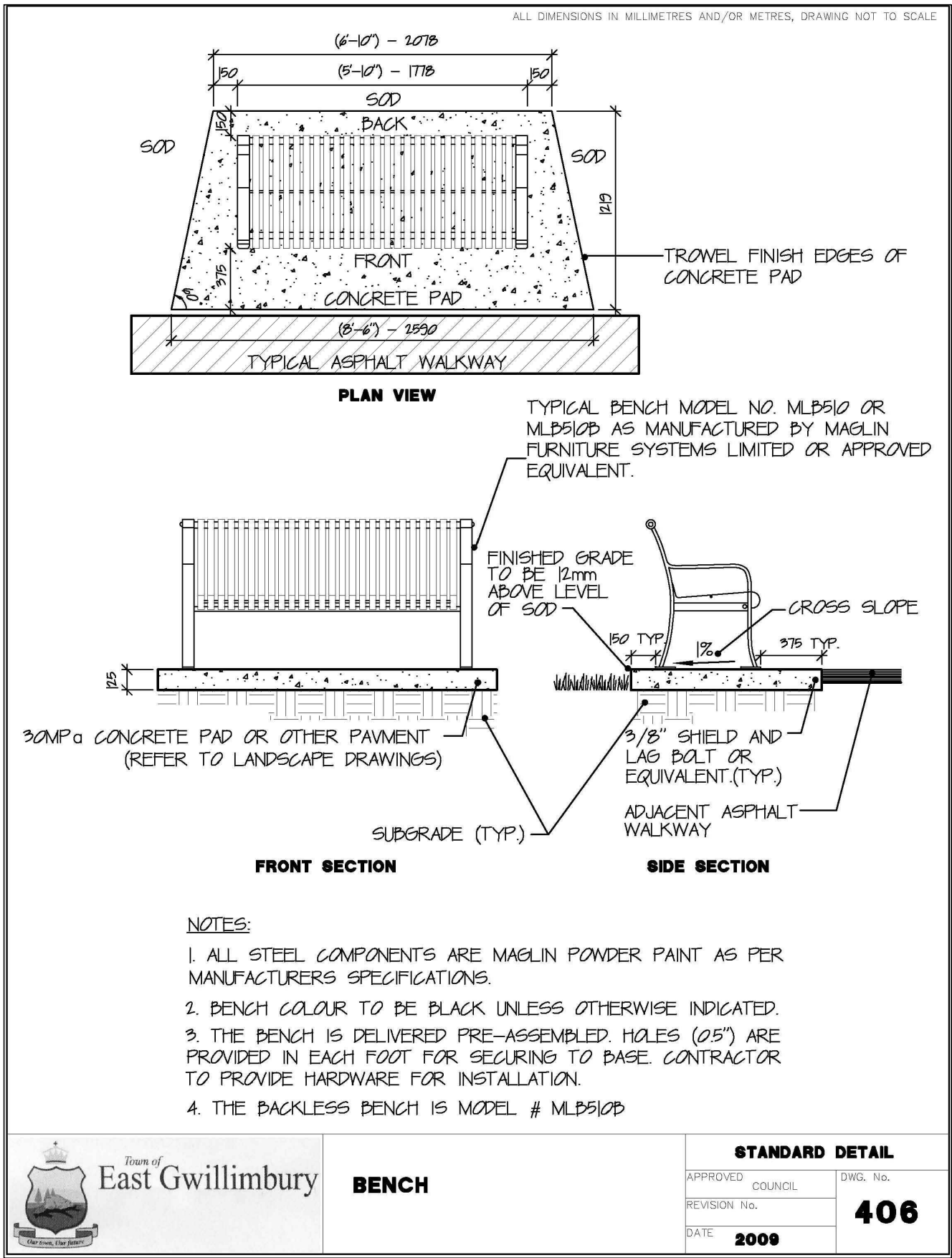
Title		
LANDSCAPE DETAILS		
Date	Dec 2024	Sheet
Scale	As shown	
Drawn	NH / XS	
Checked	NH	
Job No.	24-374	



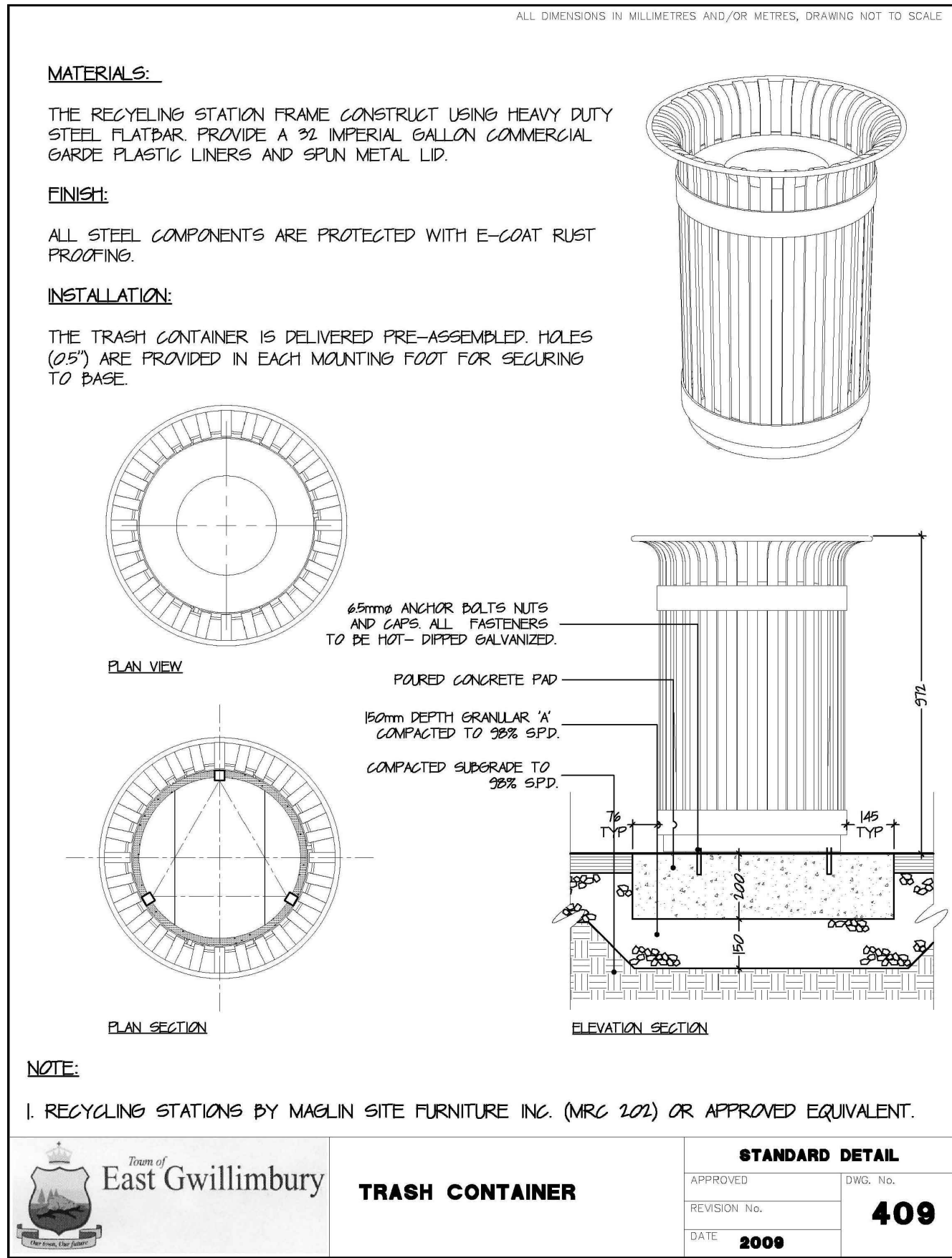
1 EXAMPLE OF FEATURE SIGN WALL
N.T.S.



2 STANDARD CONCRETE PAVING
N.T.S.



3 BENCH
N.T.S.



4 TRASH RECEPTACLE
N.T.S.

-		
-		
-		
-		
3	Issued for Submission	Feb, 2025
2	Revised and Issued As Per Comments	Feb 04, 2025
1	Issued for Schematic Design Review	Dec 16, 2024
No.	Description	Date

Revision

Town Approval Stamp



NAK design strategies

421 RONCESVALLES AVENUE, TORONTO, ON M6R 2N1 CANADA
T 416.340.8700 F 416.340.7100 NAKDESIGNSTRATEGIES.COM

Project

SHARON CORNERS
(1402 MOUNT ALBERT ROAD)
TOWN OF EAST GWILLIMBURY

Title

LANDSCAPE DETAILS

Date	Dec 2024	Sheet
Scale	As shown	
Drawn	NH / XS	
Checked	NH	
Job No.	24-374	

D2