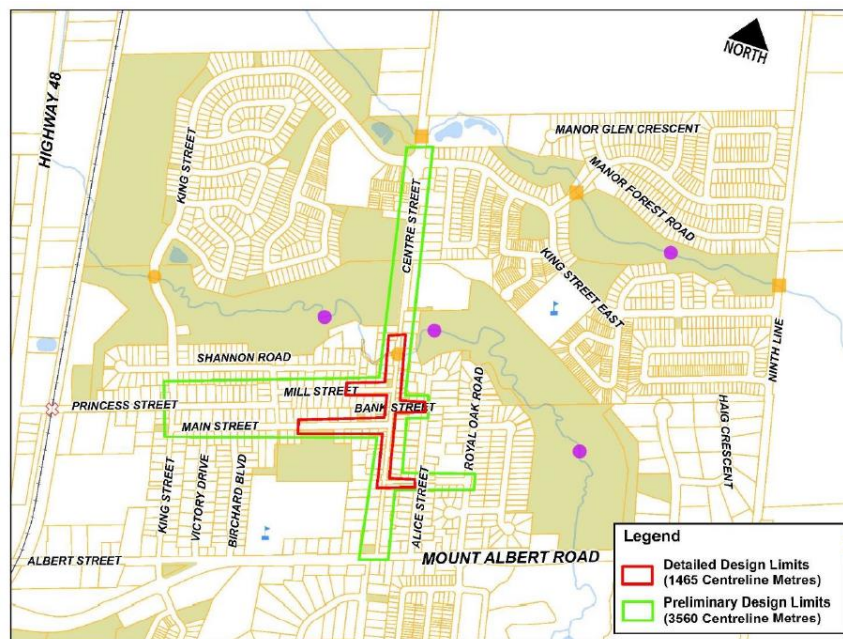


MOUNT ALBERT DOWNTOWN REVITALIZATION PRE-ENGINEERING ACTIVITIES NOTICE

The Town of East Gwillimbury is revitalizing the Mount Albert downtown area including Centre Street, Main Street and some of the local streets in the area.

This revitalization project will improve walkability, ease parking constraints and enhance physical infrastructure in Mount Albert. The goal is to make the area more attractive to residents, visitors, and tourists, and improve access to key downtown businesses, services, and amenities. These improvements will contribute to economic growth for the community.

The Town is working with CIMA+ to complete the preliminary and detailed design of the Centre Street and Main Street areas outlined in the map below. This is a multi-year design project, including opportunities for public engagement.



The purpose of this notice is to inform residents and business owners in the immediate area of the project, that CIMA+ and its subconsultants will be undertaking a variety of pre-engineering activities along Centre Street and the adjacent side streets (i.e. the boundary within the “Preliminary Design Limits” shown in the key plan above) between March and April 2022, to gather background information to support the design process.

The pre-engineering activities and related impacts to traffic include:

- Subsurface Utility Engineering (locating and marking existing municipal and private utilities); no disruption to traffic

Town of East Gwillimbury

19000 Leslie Street, Sharon, Ontario L0G 1V0 | 905-478-4282 | Fax: 905-478-2808

www.eastgwillimbury.ca

- Topographic Survey; no disruption to traffic
- CCTV Video Sewer Inspection: individual lane closures at isolated locations, open to through traffic but expect minor delays
- Geotechnical Investigation: individual lane closures at isolated locations, open to through traffic but expect minor delays
- Photography and street level video capturing the road, boulevard and building fronts, to be used for project purposes

Staff from CIMA+ or CIMA+'s subconsultants may briefly enter onto a portion of your property (front yard only) to survey the location and elevation of key features such as trees, property bars/survey monuments, driveways, walkways, gardens, utilities and water shut-offs. This information will ensure accuracy of the design process, including considerations of the slopes and grades of your property for drainage, as well as the location of walkways and driveways that connect to the municipal roads and sidewalks. There will be no intrusive (digging) work on private property as part of this pre-engineering activity work.

An extensive communication and consultation program is being finalized. Further information on Open Houses and opportunities to get involved are forthcoming. For more information and to connect with the project team, please visit the Mount Albert Downtown Revitalization page on the Town's website.

<https://www.eastgwillimbury.ca/mount-albert-revitalization/>

Should you have questions or concerns related to the upcoming field work, please contact:

Town of East Gwillimbury

Denny Boskovski, C.E.T.
Asset Management and Capital Project Manager
Tel: 905-478-4283, ext. 3818
Email: dboskovski@eastgwillimbury.ca

Town of East Gwillimbury

Ray Wrzala, C.Tech.
Senior Engineering Technologist
Tel: 905-478-4283, ext. 3852
Email: rwrzala@eastgwillimbury.ca

CIMA+

Paul Turner, P.Eng.
Director, Partner / Transportation
Tel: 905 697-4464 ext. 6902
email: paul.turner@cima.ca

Town of East Gwillimbury

19000 Leslie Street, Sharon, Ontario L0G 1V0 | 905-478-4282 | Fax: 905-478-2808
www.eastgwillimbury.ca