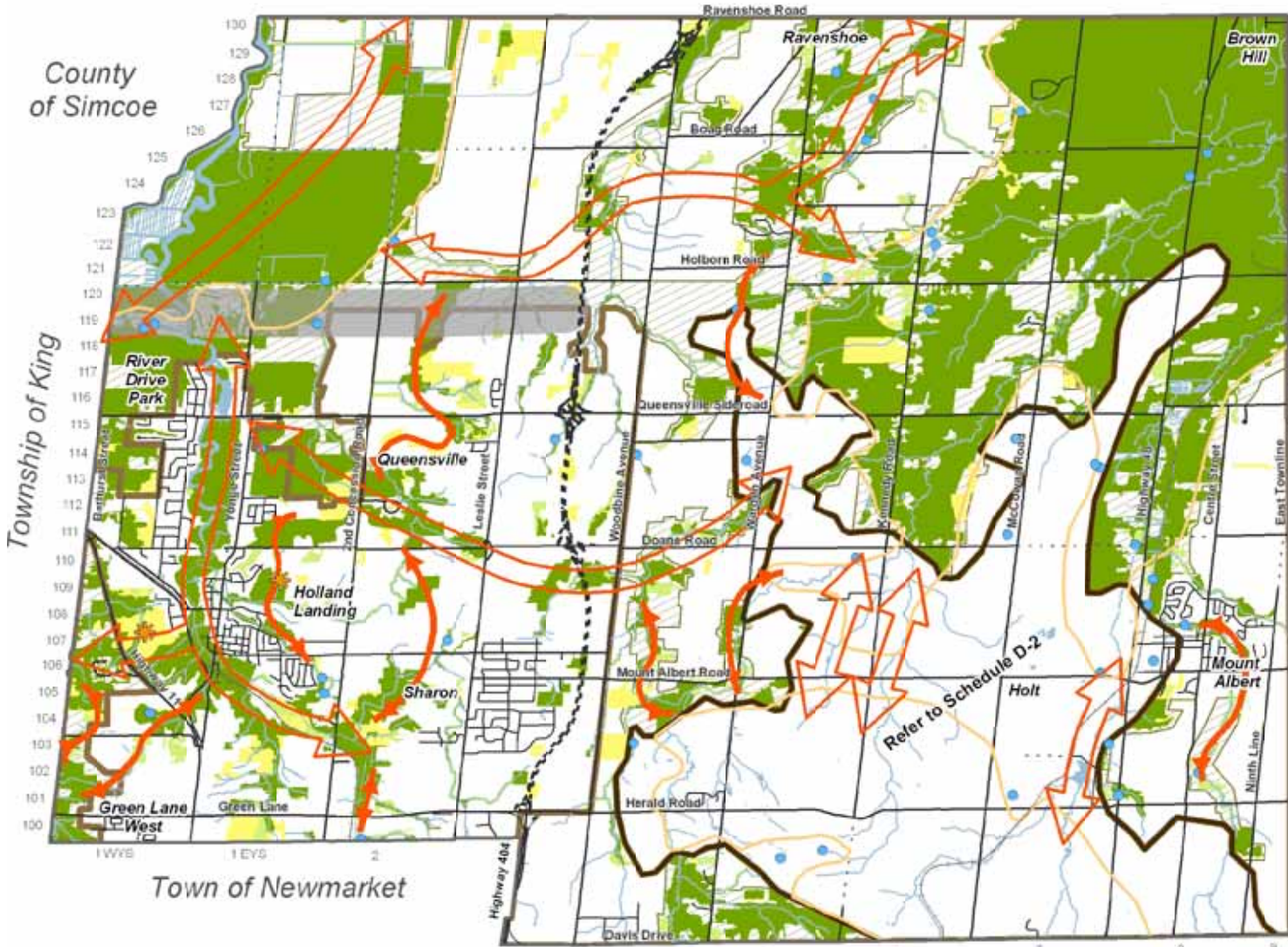


Town of Georgina



Regional Municipality of Durham



Official Plan
Schedule D
NATURAL HERITAGE SYSTEM

- Provincial Greenbelt Plan Area *
- Greenbelt Natural Heritage System
- Oak Ridges Moraine (ORM) Conservation Plan Area *
- Town's Natural Heritage System**
- Level A
- Level B
- Level C
- Big Woods Policy Area
- Proximity Linkages
- Special Study Areas**
- Opportunities for Primary Environmental Corridors
- Opportunities for Supporting Environmental Corridors
- Provincial Freeway Route (approved)
- Proposed Provincial Freeway
- Road
- Railway
- Waterbody*
- Watercourses*

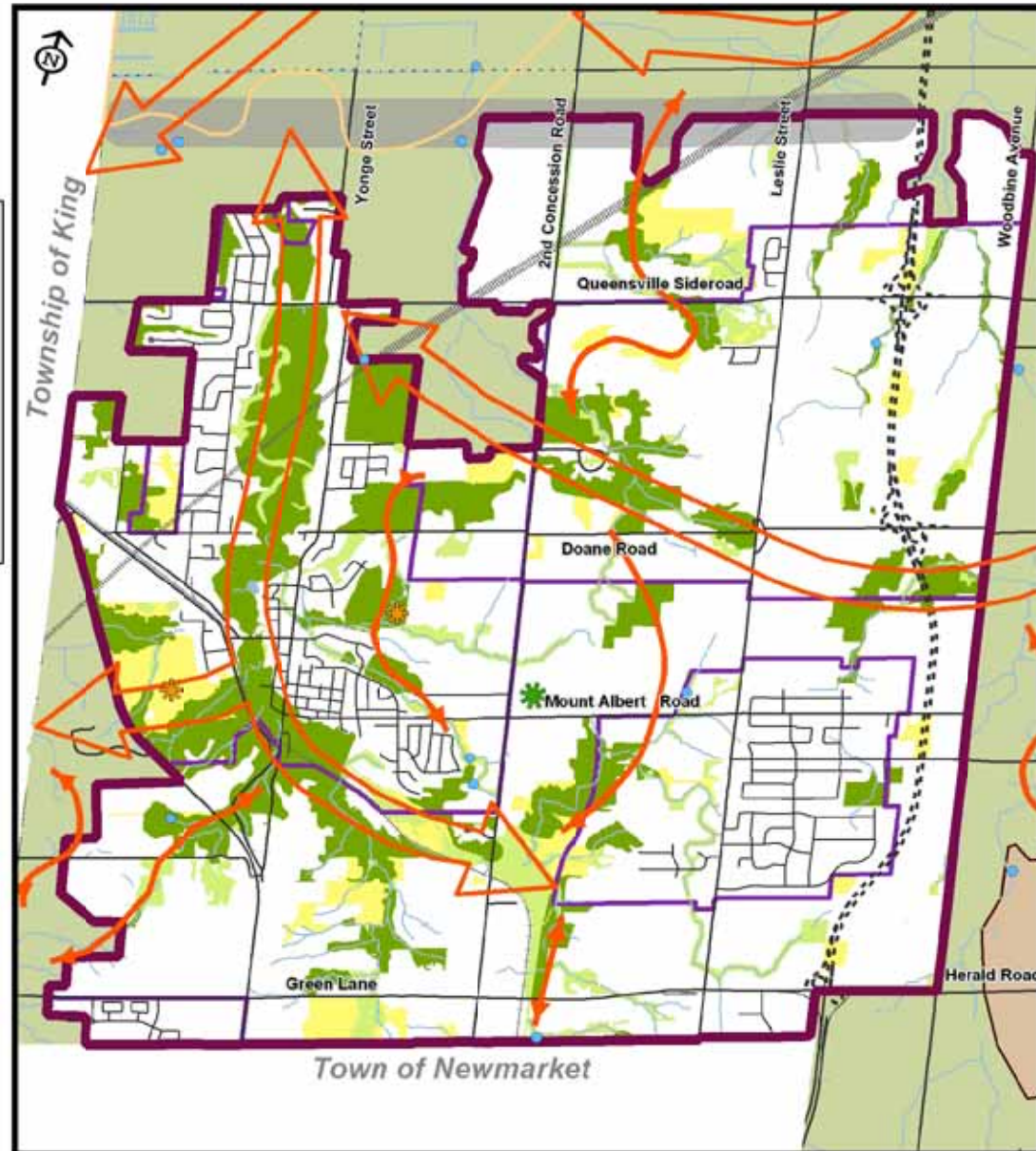
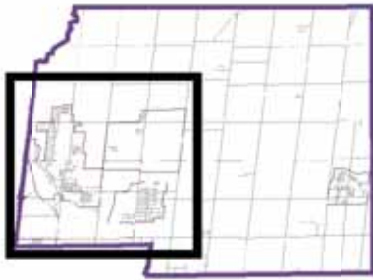
NOTE: This Schedule forms part of the Official Plan and may be read and interpreted in conjunction with the text. Please refer to Section 5 for detailed policy related to this Schedule.
© Copyright, The Town of East Gwillimbury, April 2010
© Copyright, The Regional Municipality of York, 2008
* Reproduced by Queen's Printer for Ontario, 2003-2008
** Refer to Schedule E.2

DRAFT

Town of Whitchurch- Stouffville

DRAFT

Town of East Gwillimbury Key Map



Official Plan Schedule D-1 Natural Heritage System in the Urban Planning Area

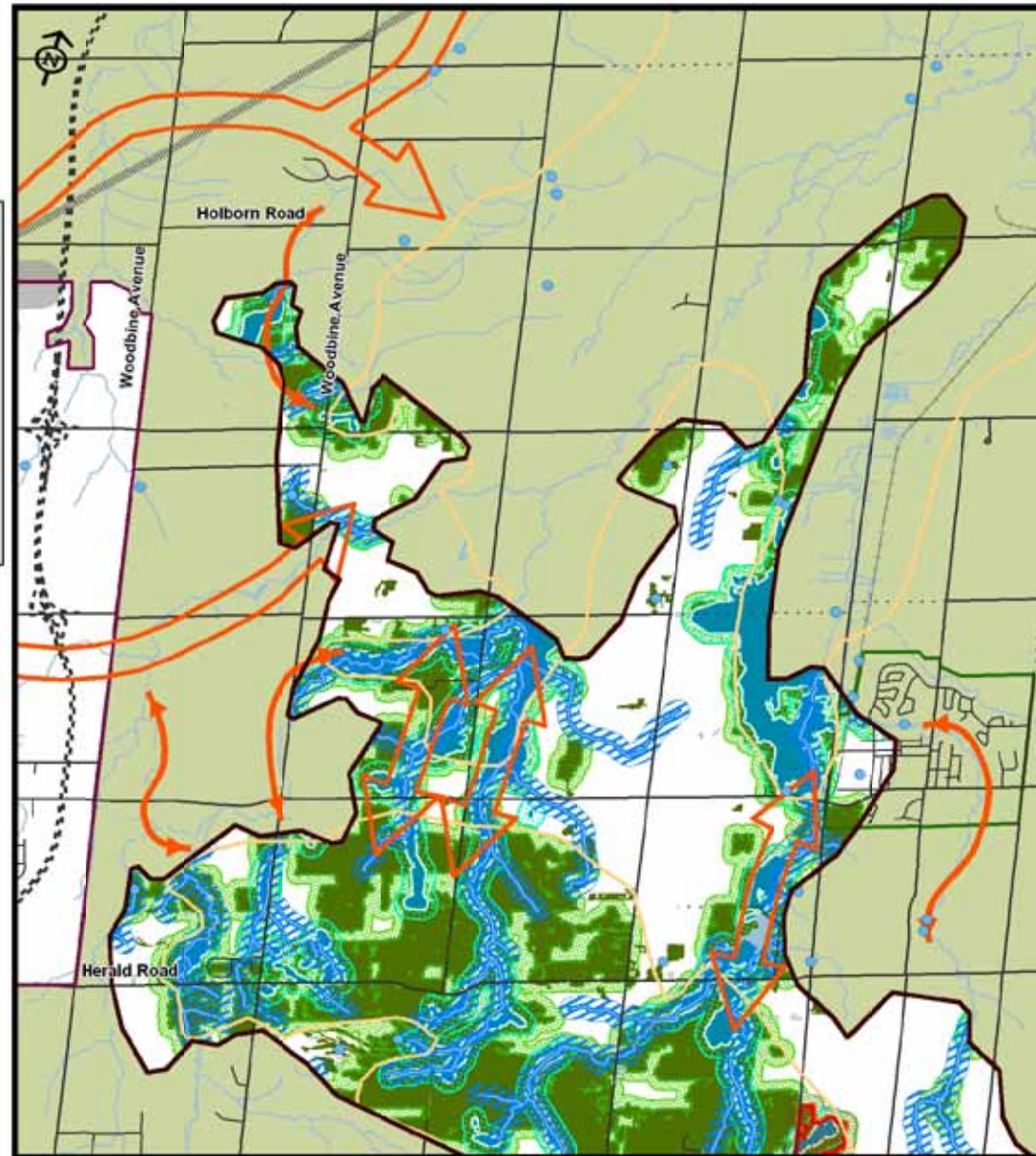
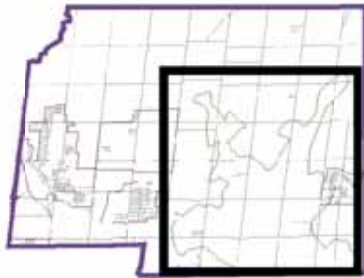
- Provincial Greenbelt Plan Area *
- Oak Ridges Moraine (ORM) Conservation Plan Area *
- Urban Planning Area
- Natural Heritage System**
- Level A
- Level B
- Level C
- Big Woods Policy Area
- Proximity Linkages
- Special Study Areas**
- Conceptual Central Park Location
- Opportunities for Primary Environmental Corridors
- Opportunities for Supporting Environmental Corridors
- Hydro Corridor
- Provincial Freeway Route (approved)
- Proposed Provincial Freeway Road
- Railway
- Waterbody*
- Watercourses*

Note: This Schedule is part of the Official Plan and must be read and interpreted in conjunction with the text. Please refer to Section 5 for detailed policies related to this Schedule.

©Copyright, The Town of East Gwillimbury, April 23/10
 ©Copyright, The Regional Municipality of York, 2008
 * Includes © Queen's Printer for Ontario 2009-2008
 **Refer to Section 6.3

DRAFT

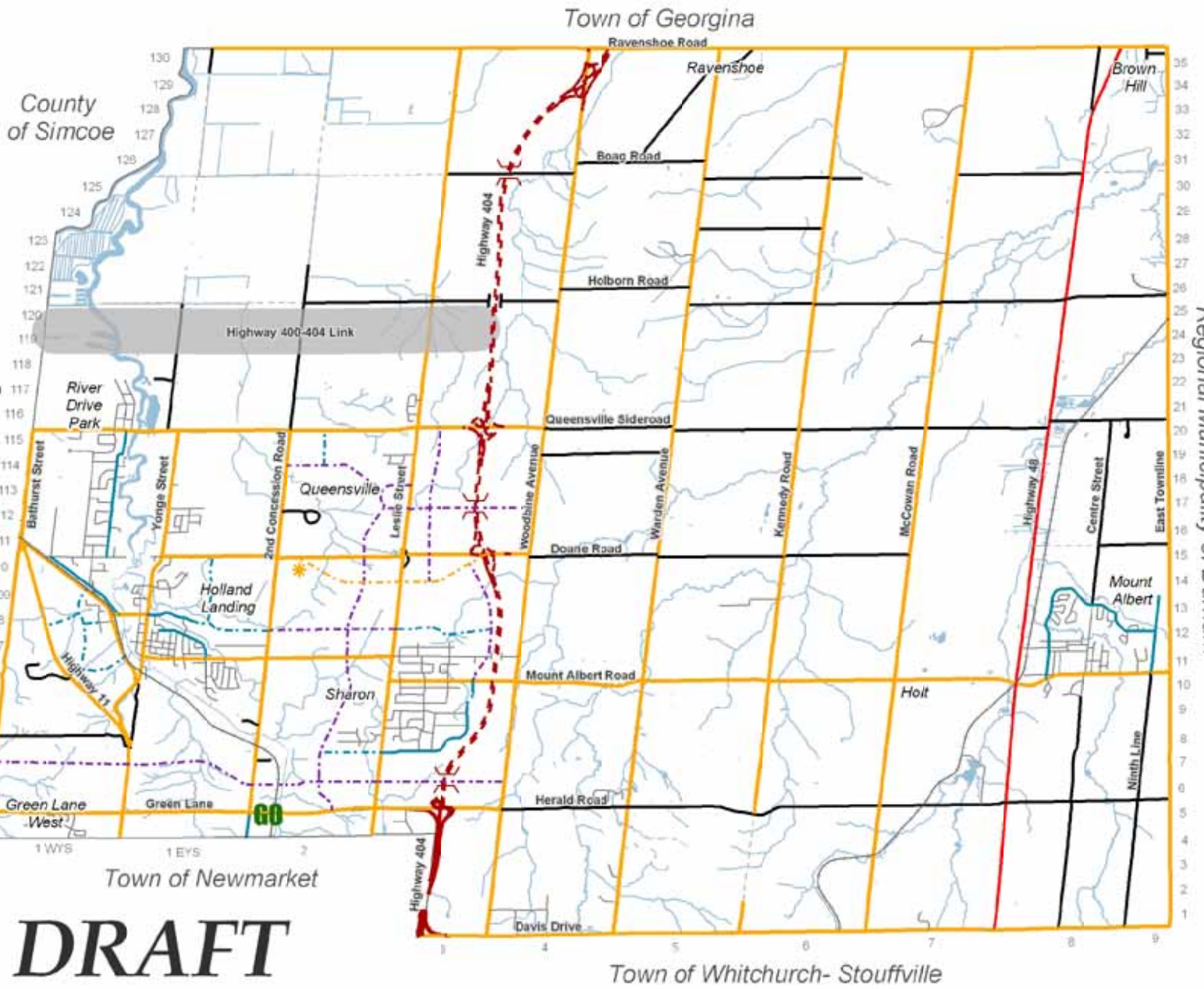
Town of East Gwillimbury Key Map




Town of East Gwillimbury
Official Plan
 Schedule D-2
Oak Ridges Moraine Natural Heritage System

-  Provincial Greenbelt Plan Area *
-  Greenbelt Settlement Area
-  Oak Ridges Moraine (ORM) Conservation Plan Area *
-  Areas of Natural and Scientific Interest (ANSI)
-  ANSI 30 metre vegetative buffer
-  ANSI 120 metre area of influence
-  Wetlands
-  Wetlands 30 metre vegetative buffer
-  Wetlands 120 metre area of influence
-  Woodlands
-  Woodlands 30 metre vegetative buffer
-  Woodlands 120 metre area of influence
-  Stream 30 metre vegetative buffer
-  Stream 120 metre area of influence
-  Big Woods Policy Area
-  Proximity Linkages
-  Opportunities for Primary Environmental Corridors
-  Opportunities for Supporting Environmental Corridors
-  Hydro Corridor
-  Provincial Freeway Route (approved)
-  Proposed Provincial Freeway
-  Road
-  Railway
-  Waterbody*
-  Watercourses*

Note: This Schedule forms part of the Official Plan and will be read and interpreted in conjunction with the Act. Please refer to Section 6 for detailed policies related to this Schedule.
©Copyright, The Town of East Gwillimbury, April 23, 1997
 ©Copyright, The Regional Municipality of York, 2000
 *Includes © Queen's Printer for Ontario 00E3-1000



DRAFT



Official Plan
Schedule E
TRANSPORTATION
NETWORK

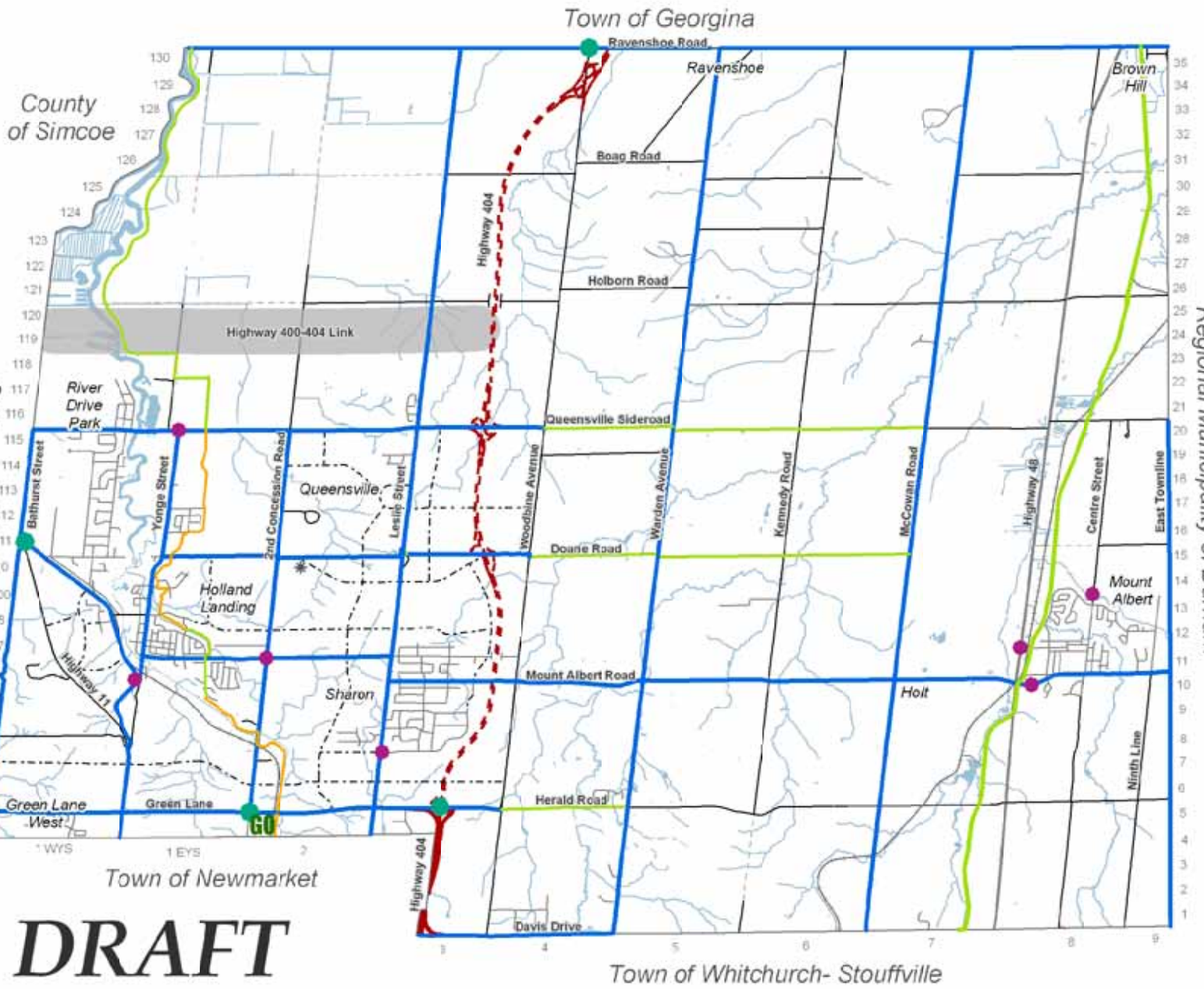
- Provincial Highways**
 - Provincial Highway
 - Controlled Access Highways
 - Existing
 - - Under Construction
 - Proposed
- Regional Roads**
 - Regional Arterial
 - - Proposed Regional Arterial**
- Town Roads**
 - - Proposed Major Collector
 - - Proposed Minor Collector
 - Major Collector
 - Minor Collector
 - Rural Road
 - Local Road
 - - Unopened Road Allowance
- GO Station**
- Railway**
- Waterbody***
- Watercourse***


*Queen Road Alignment Under Review Through EA Process

Note:
 This Schedule forms part of the Official Plan and
 should be read and interpreted in conjunction with
 the text.

© Copyright, The Town of East Gwillimbury, April 2016.
 © Copyright, The Regional Municipality of York, 2009-10
 **1:10,000 © Queen's Printer for Ontario 2009-2010






Official Plan
 Schedule E-1
CYCLING NETWORK

Existing and Proposed Cycling Network

- Proposed Cycling Facilities on Regional Roads and Right of Ways*
- Proposed Cycling Facilities on Non-Regional Facilities**
- Existing Cycling Facilities on Non-Regional Facilities*

Provincial Highways

- Provincial Highway
- Controlled Access Highways
- Existing
- Under Construction
- Proposed

Town and Regional Roads

- Proposed Collector Road
- Road
- Unopened Road Allowance
- Town Gateway
- Community Gateway
- GO GO Station
- Railway**
- Waterbody**
- Watercourse**

* Deane Road Alignment Under Review Through SA Process.

** Facilities (sidewalks, but are not limited to: multi-use trails, bike lanes, paved shoulders, signed routes, and other amenities) to be determined through co-ordination between the Region of York and the Town.

Note:
This Schedule forms part of the Official Plan and must be read and interpreted in conjunction with the OP.

© Copyright, The Town of East Gwillimbury, April 2010.
© Copyright, The Regional Municipality of York, 2009-08
** Included in Queen's Printer for Ontario, 2003-01-19

DRAFT



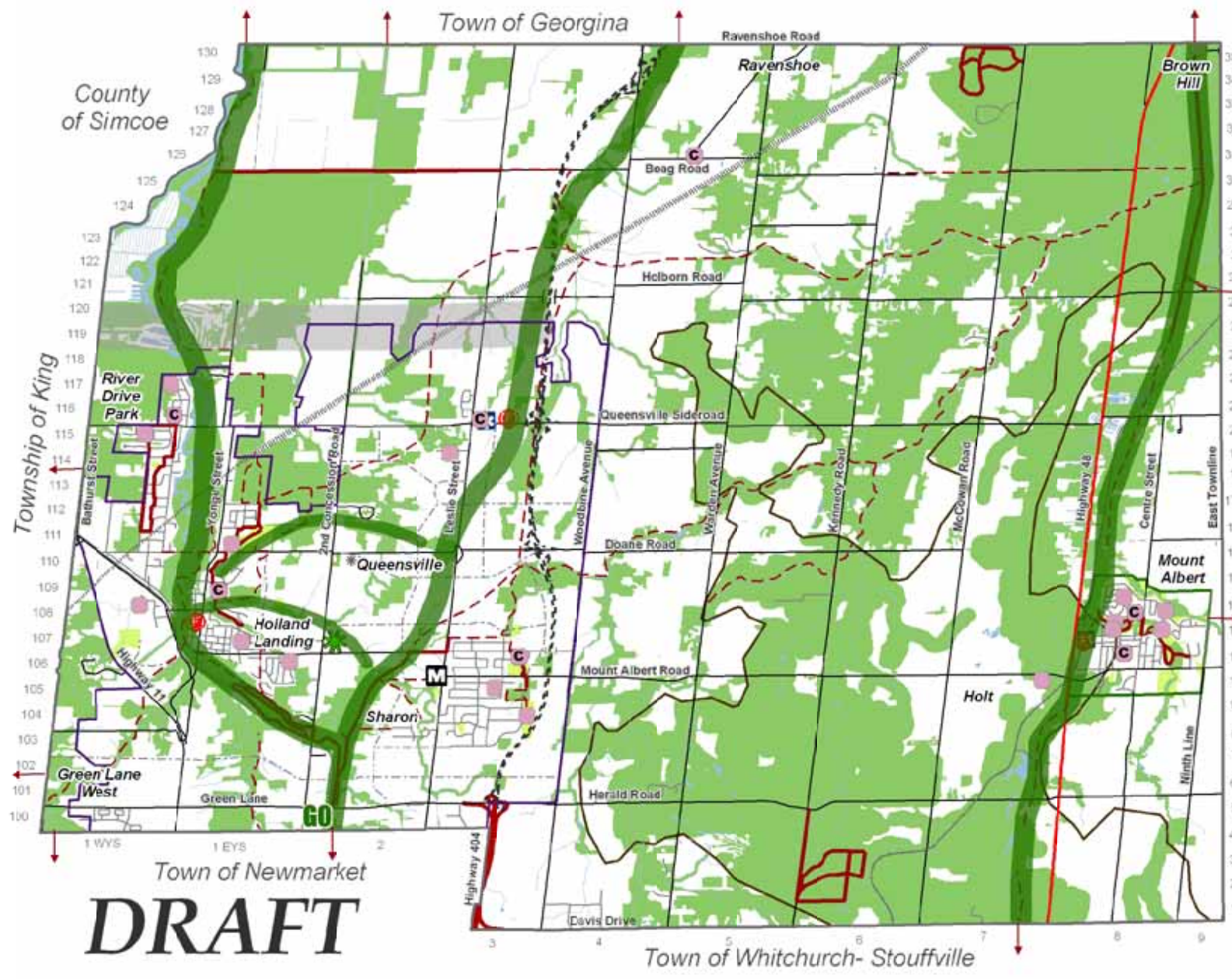


**Official Plan
Schedule F
Parks, Trails and
Community Facilities**

Regional Municipality of Durham

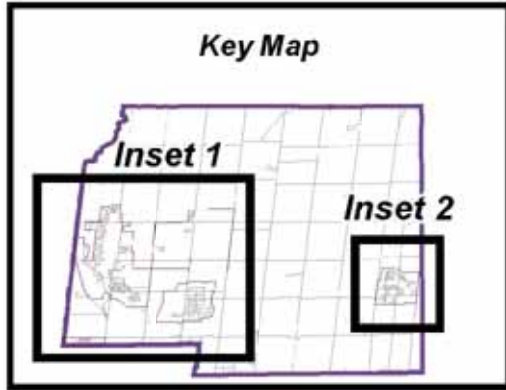
- Greenbelt Settlement Area*
- Oak Ridges Moraine*
- Urban Planning Area
- Natural Heritage System
- Parks and Open Space
- Existing Park
- Park & Community Centre
- Conceptual Central Park Location
- Municipal Office
- Fire Station
- EMS Station
- Existing Trail
- Proposed Trail
- External Trail Connection
- Community Trail Linkages (proposed)**
- Hydro Corridor
- Provincial Freeway Route (approved)
- Proposed Provincial Freeway
- Road
- Proposed Collector Roads
- Unopened Road Allowance
- Railway
- Waterbody*
- Watercourse*

Note:
This Schedule forms part of the Official Plan and must be read and interpreted in conjunction with the text.
© Copyright, The Town of East Gwillimbury, April 2016.
© Copyright, The Regional Municipality of York, 2008-09.
* Includes © Queen's Printer for Ontario 2003-2008.
** Schematics - Exact connections to be determined through further study.
* Doane Road Alignment under Review Through EA Process



Town of Newmarket
DRAFT

DRAFT



Official Plan Schedule F-1 Parks, Trails and Community Facilities in the Urban Planning Area

- Greenbelt - Protected Countryside*
- Settlement Area
- Oak Ridges Moraine*
- Urban Planning Area
- Natural Heritage System
- Parks and Open Space
- Existing Park
- Park & Community Centre
- Conceptual Central Park Location
- Municipal Office
- Fire Station
- EMS Station
- Existing Trail System
- Proposed Trail System
- Community Trail Linkages (proposed)**
- Hydro Corridor
- Provincial Freeway Route (approved)
- Proposed Provincial Freeway
- Existing Road
- Proposed Collector Roads
- Unopened Road Allowance
- Railway
- Waterbody*
- Watercourse*

Note:
This Schedule forms part of the Official Plan and must be read and interpreted in conjunction with the text.

© Copyright, The Town of East Gwillimbury, Apr. 2013
© Copyright, The Regional Municipality of York, 2008
* Includes © Queen's Printer for Ontario 2003/2008

** Schedules - Exact connections to be determined through further study

* Doane Road & greens Under Review Through CA Process





Official Plan Schedule G Resource Management Plan

- Greenbelt - Protected Countryside*
 - Holland Marsh Specialty Crop Area*
 - Greenbelt Settlement Area
 - Oak Ridges Moraine (ORM) Conservation Plan Area*
- Wellhead Protection Zone**
- 100 Metre Zone
 - 0-2 Year Zone
 - 2-5 Year Zone
 - 5-10 Year Zone
 - 10-25 Year Zone
- Primary Mineral Aggregate Resource Area
 - Secondary Mineral Aggregate Resource Area
- Hydro Corridor
 - Provincial Freeway Route (approved)
 - Proposed Provincial Freeway
 - Road
 - Unopened Road Allowance
 - Railway
 - Waterbody*
 - Watercourse*

Regional Municipality of Durham

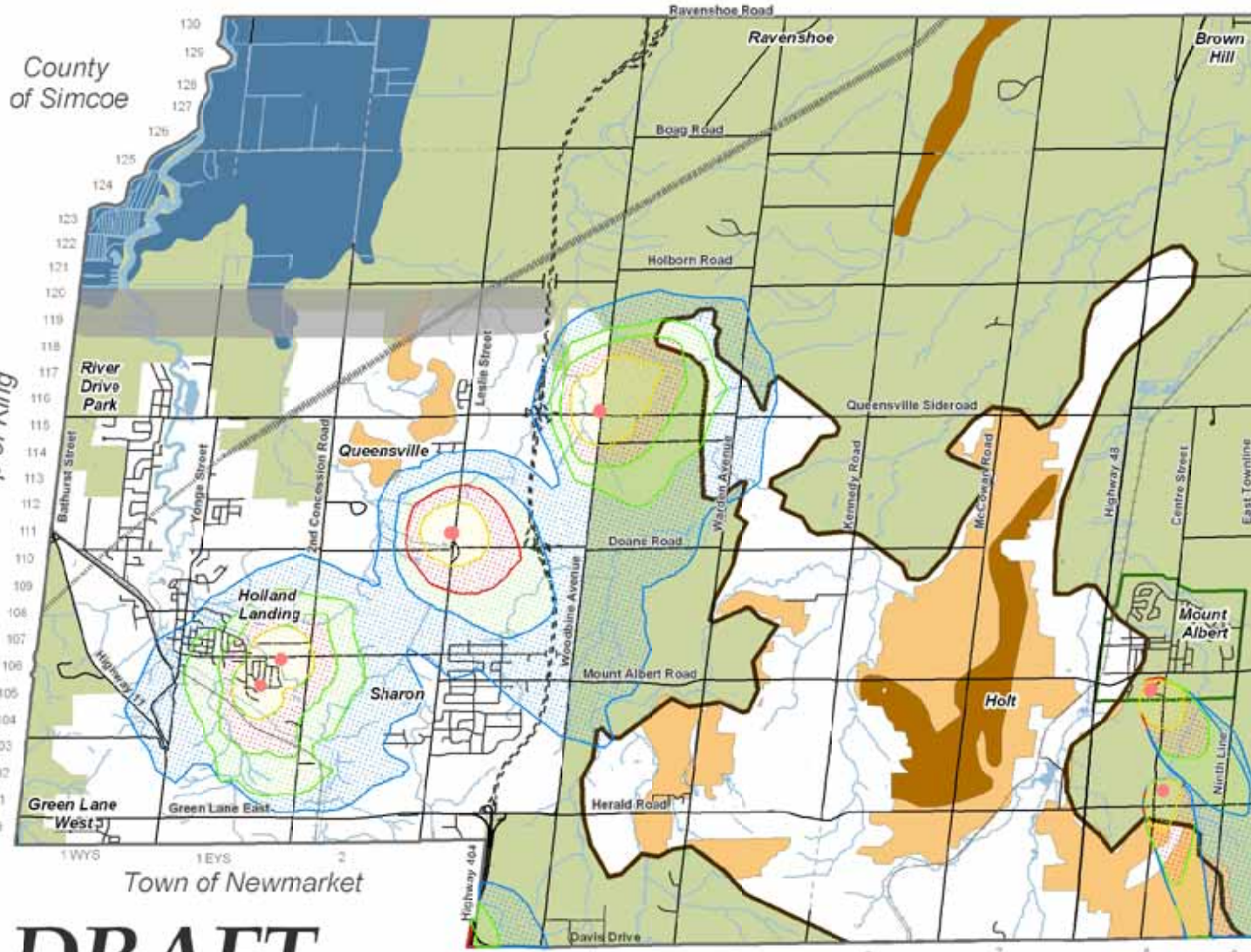
Town of Georgina

County of Simcoe

Township of King

Town of Newmarket

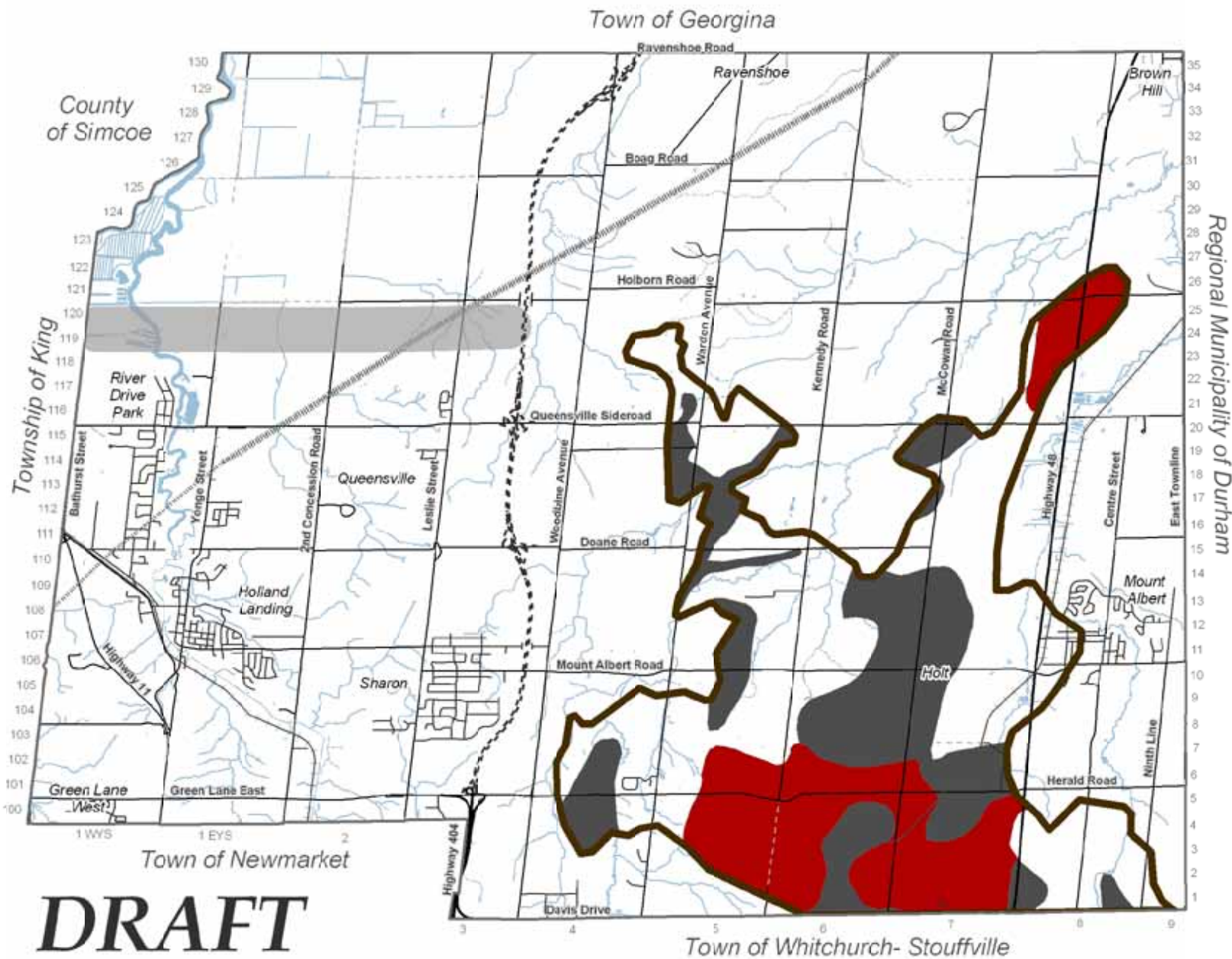
Town of Whitchurch- Stouffville



DRAFT

Note:
This Schedule forms part of the Official Plan and is to be read and interpreted in conjunction with the text.
© Copyright, The Town of East Gwillimbury, May 2010
© Copyright, The Regional Municipality of York, 2008-09
*Inclusion in Queen's Printer for Ontario 2003-2008





Official Plan
 Schedule H
Landform Conservation Areas

- Oak Ridges Moraine (ORM) Conservation Plan Area *
- Landform Conservation Area * (Category 1)
- Landform Conservation Area * (Category 2)
- Provincial Freeway Route (approved)
- Proposed Provincial Freeway
- Road
- Unopened Road Allowance
- Railway
- Hydro Corridor
- Waterbody*
- Watercourse*

Note:
 This Schedule forms part of the Official Plan and must be read and interpreted in conjunction with the OP.
 © Copyright, The Town of East Gwillimbury, April 2010
 © Copyright, The Regional Municipality of York, 2009
 * Protected by Queen's Printer for Ontario 2003/2006





East Gwillimbury

Official Plan Schedule I Areas of High Aquifer Vulnerability

- Oak Ridges Moraine (ORM) Conservation Plan Area *
- Areas of High Aquifer Vulnerability *
- Areas of Low Aquifer Vulnerability *
- Provincial Freeway Route (approved)
- Proposed Provincial Freeway
- Road
- Unopened Road Allowance
- Railway
- Hydro Corridor
- Waterbody*
- Watercourse*

Regional Municipality of Durham

Note:
This Schedule I forms part of the Official Plan and must be read and interpreted in conjunction with the OP.

© Copyright, The Town of East Gwillimbury, April 2010
© Copyright, The Regional Municipality of York, 2009
* Produced © Queen's Printer for Ontario, 2003, 2006

0 1,000 m



Town of Georgina

Ravenshoe Road

Ravenshoe

Brown Hill

County of Simcoe

130
129
128
127
126
125
124
123
122
121
120
119
118
117
116
115
114
113
112
111
110
109
108
107
106
105
104
103
102
101
100

Township of King

River Drive Park

Bathurst Street

Yonge Street

2nd Concession Road

Queensville

Leslie Street

Holland Landing

Highway 11

Green Lane West

Green Lane East

Highway 404

1 WS

1 EY 5

2

Town of Newmarket

DRAFT

3
4
5
6
7
8
9

Town of Whitchurch- Stouffville

Boag Road

Holborn Road

Warden Avenue

Kennedy Road

McCowan Road

Queen'sville Sideroad

Doane Road

Woodbine Avenue

Mount Albert Road

Highway 48

Centre Street

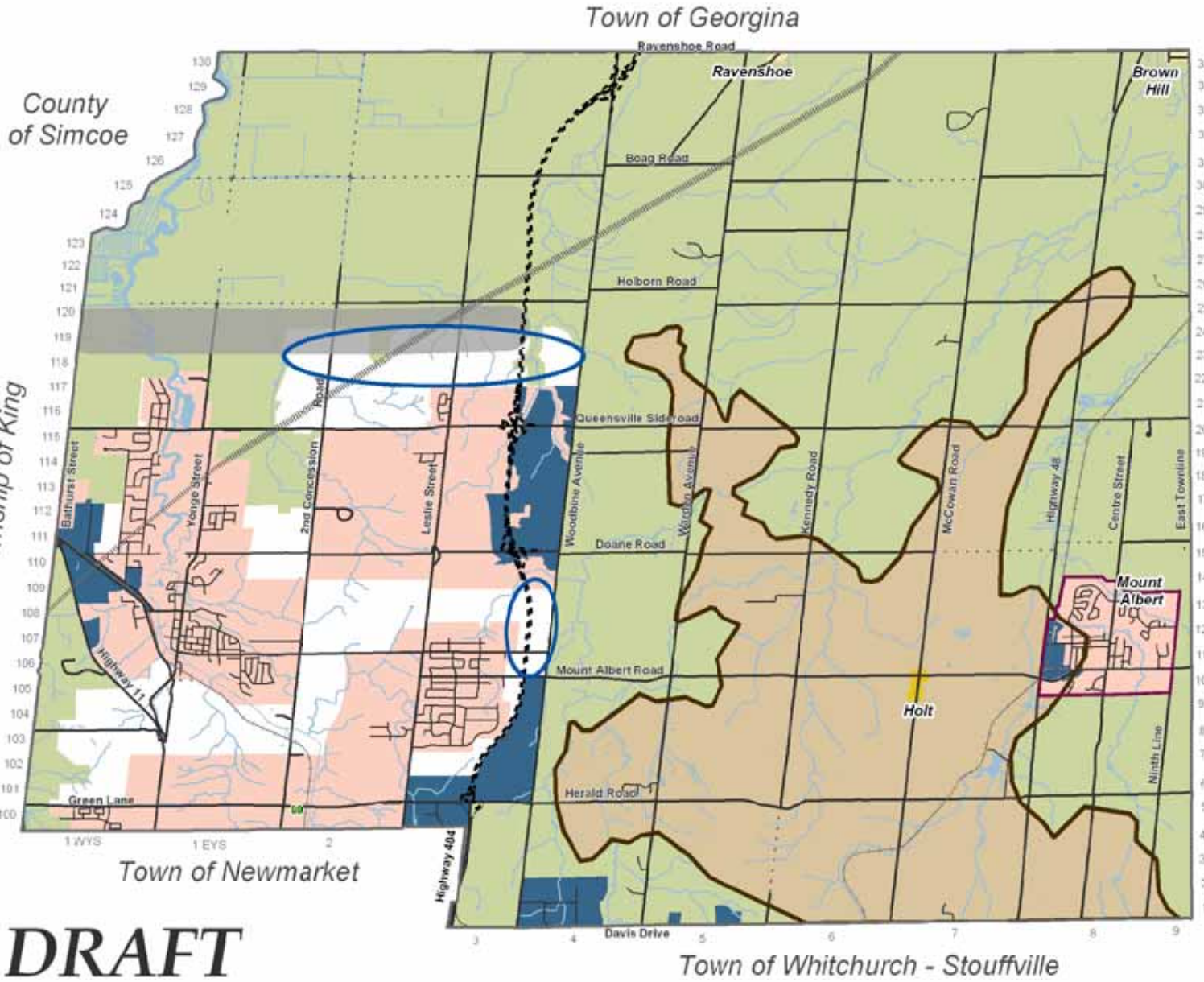
East Townline

Mount Albert

Ninth Line

Herald Road

Davis Drive



DRAFT

Regional Municipality of Durham



Official Plan
Figure 1
Strategic
Employment Lands

- Greenbelt - Protected Countryside*
- Greenbelt Settlement Area
- Hamlet
- Oak Ridges Moraine*
- ORM Hamlet
- Urban Planning Area**
- Community Area
- Employment Area
- Strategic Employment Lands
- Hydro Corridor
- Provincial Freeway Route (approved)
- Proposed Provincial Freeway
- Road
- Unopened Road Allowance
- Railway
- Waterbody*
- Watercourse*

© Copyright, The Town of East Gwillimbury, May 2010
 © Copyright, The Regional Municipality of York, 2009-08
 *Natural Resources Canada, 2003-2008

