

Connecting to Wireless

Step 1:

Change your laptop's Internet Protocol (TCP/IP) Properties to "Obtain an IP address automatically".

Step 2:

Open your Wireless Adapter to find and connect EGPL's Public Wireless Network.

Step 3:

Open your Browser. You will be taken to our authentication page. Enter your library number and pin. Before continuing you must read and agree to EGPL's Public Internet Use Policy.

Step 4:

Children under 14 and Visitors must sign up for Wireless access @ Reference Desk.

***Please NOTE:**
Library staff cannot assist you with your laptop, network card, or any configuration changes.



EAST GWILLIMBURY PUBLIC LIBRARY Holland Landing Branch



P.O. Box 1609, 19513 Yonge Street,
Holland Landing, ON L9N 1P2
Tel: (905)836-6492
Fax: (905)836-6499

Hours:

Tuesday to Thursday: 10:00 a.m.- 8:00 p.m.
Friday: 10:00 a.m.- 5:00 p.m.
Saturday: 10:00 a.m.- 4:00 p.m.

Mount Albert Branch



19300 Centre Street,
Mount Albert, On
L0G 1M0
Tel: (905)473-2472
Fax: (905)473-5103

Hours:

Tuesday and Thursday: 10:00 a.m.- 8:00 p.m.
Wednesday: 10:00a.m. - 6:00 p.m.
Saturday: 10:00 a.m.- 4:00 p.m.
Sunday (mid Oct.-mid May):1:00 p.m.- 5:00 p.m.



Wireless @ Your Library™



November 2008

www.eastwillimbury.ca/library

www.eastwillimbury.ca/library

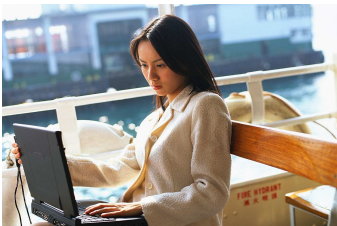
EAST GWILLIMBURY PUBLIC LIBRARY WIRELESS ACCESS

East Gwillimbury Public Library provides Wireless access in both its Holland Landing and Mount Albert Branches.

Patrons can connect to the Internet through their laptops and other mobile devices and avoid having to wait for one of the Library's Internet workstations to become available. This service is accessible from any location within either branch, including quiet study areas.

Wireless service is available during the Library's regular hours of operation to anyone with a current East Gwillimbury Public Library card and to Visitors. Patrons need to provide their own wireless-ready device.

All wireless users are expected to act in a lawful and respectful manner. By connecting to the Library wireless network, users are required to conform to the conditions outlined in the Public Internet Use Policy found at www.eastgwillimbury.ca/library



Availability of Wireless

The Library's wireless network is available to patrons in the Library during the Library's regular hours. Wireless coverage is provided for the entire Library, but wireless signal strength may be weakened around some hidden spots and in the corners.

Use of Wireless is at Patron's Own Risk

Use of the Library's wireless network is at the patron's own risk. The wireless network provides no data encryption between the access points and a patron's device. Anyone in the vicinity of the Library may potentially capture information sent to or from a patron's device. The Library recommends that patrons do not transmit credit card information or passwords while using the wireless network. It is a patron's responsibility to protect their devices from viruses and hackers and be equipped with up-to-date antivirus software, security patches, firewalls and the like.

Printing

Patrons will need to download a small program in order to print via the Library's wireless network. Visit the *Wireless Printing Instruction* webpage and follow the instructions to download the printing application. Patrons can retrieve their print jobs at the Check out Desk at a cost of 25 cents per page. A patron may supply his or her own paper, in which case the printing cost is reduced to 15 cents per page.

Theft or Damage

The Library is NOT responsible for unattended laptops or other devices. The Library is not responsible for any damages sustained by patrons' wireless devices or their contents while using the Library's wireless network.

Termination of Wireless Connection and/or Withdrawal of Wireless Privileges

In order to protect its wireless network and other Library patrons, the Library reserves the right to terminate a patron's wireless Internet connection at any time, or to withdraw a patron's wireless access privileges entirely.

Wireless Internet Connection by Using Your Laptop - You Will Need:

- ◆ A wireless network interface card, 802.11a/b/g/i
- ◆ A valid Library Card
- ◆ To configure your laptop to use the Library's Internet connection
- ◆ A charged battery.

