

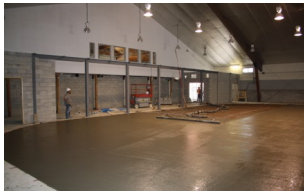


# East Gwillimbury Sports Complex Renovation Project Update....

## Construction Is Still Moving Forward As Planned...

Renovation of the Sports Complex including the east pad and lobby, and the addition of new community space at the west end is moving forward as planned. This is one of the largest projects ever undertaken in the Town and important im-

### "Still Moving Forward As Planned"...



provements are being made to the facility so it can better serve the recreational interests of our community. Where a new arena would typically cost about \$9 million to construct, this refurbishment is costing \$3 million, of which the Town is paying only \$1 million. The balance is financed by federal and provincial stimulus funding through the RInC Fund (Recreation Infrastructure Canada).

The project is on a tight schedule due to the requirements of the funding program. This has put pressure not only on the construction work but also on the two associations that are major users of the arena. All are aware of the schedule and the temporary measures this has caused, and are working

cooperatively to maintain safety while still taking advantage of the fact that the facility remains serviceable.

Also, we are competing for the same materials and suppliers as many other municipalities. In addition, renovation projects often present unexpected site conditions that cause you to modify your plans. Together, these have resulted in some challenges that, working together, Town staff, the architect and the contractor have dealt with successfully. For example:

- ✂ When the east lobby was demolished, structural issues were discovered at the east end of the lobby (previously dressing room 1 and 2) and in the main entrance area. As a result, new structural drawings had to be completed before ordering and manufacturing the steel columns. This has been completed and steel is now being erected.

- ✂ In the west end, excavation revealed unexpected soil conditions that required new plans and approvals. This also required the relocation of gas lines. This has all been completed and materials are on-site.

While all this was going on – all necessary to ensure the renovations are completed properly – Town staff, the architect and

the contractor have been working together to keep the project on track.

Some of the temporary measures you may encounter while this renovation work is in progress are:

- ✂ East pad safety barricades that are put in place when the re-surfacer is on the ice. We have asked all coaches, trainers and parents to ensure users do not cross this area when the ice is being resurfaced.
- ✂ Temporary dressing trailers
- ✂ Temporary spectator stands

These temporary measures were requested by the associations in order to allow the arena to remain serviceable while construction is underway. Town staff were reluctant to open the east pad with temporary measures such as these because it is our practice to provide the absolute best services we can in Town facilities. However, in an attempt to accommodate the needs of our minor hockey and figure skating associations these temporary measures were put in place. The Town will continue to monitor and modify the site where necessary to provide you with the best service possible while construction continues and we thank you for your patience and understanding.

## PROJECT HIGHLIGHTS

- ⇒ The new east pad & lobby will include 6 new dressing rooms...
- ⇒ The new east pad & lobby will include a new snack bar, lounge with fireplace and new pro shop...
- ⇒ The new east pad & lobby will include new second floor meeting space & washrooms made fully accessible by a new full size elevator...
- ⇒ The new west end community hall will include dividable leisure program and meeting space with a banquet



Watch This Newsletter For Monthly Construction Updates OR Visit The Town Website [www.eastgwillimbury.ca](http://www.eastgwillimbury.ca)

## RInC Fund Trivia

763 - RInC Projects were approved for funding in Ontario totaling \$650,787,965 worth of projects

105 - Projects were approved in the GTA area with alone with 135 - Projects approved in Toronto

All projects must be complete by March 31, 2011 or grant funding will not be received

All projects are competing for the same arena contractors and specialized materials

## Working Together To Keep You On The Ice...

Early in the construction process it became apparent that both our Minor Hockey Association and Figure Skating Association would incur major cost as a result of the need to rent ice time outside of

East Gwillimbury due to the closing of the east pad. Through the collaborative efforts of the architect, the contractor and arena staff, the new east ice surface was completed a month ahead of

schedule and now provides valuable ice time to both associations. Although it is not 100% complete it is a valuable asset to the community. Thank you all!