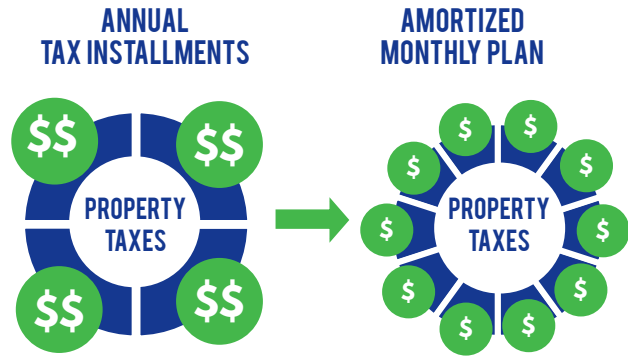


PRE-AUTHORIZED PAYMENTS

Make tax payments easier by setting up pre-authorized payments over a 10-month period, rather than paying four large payments annually.





Payments can also be set up to be withdrawn on the due dates shown on your tax bill. Accounts must be current. Visit www.eastgwillimbury.ca/taxpap to download a copy of the registration form.

The Town can assist with arranging monthly payment plans for taxes in arrears.

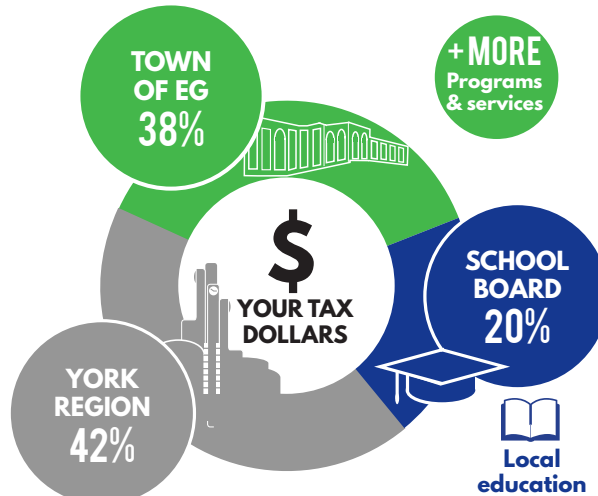
SIGN UP NOW!


Forms are available at www.eastgwillimbury.ca/PAPforms.

 You can email completed forms and a scanned void cheque to customerservice@eastgwillimbury.ca.

 Or mail completed forms and a void cheque to:
Attn: Finance Department
19000 Leslie Street
Sharon, ON, L0G 1V0

WHERE DO YOUR TAX DOLLARS GO?



 For more information on Town services visit www.eastgwillimbury.ca, and for Regional services visit www.york.ca.



2018 BUDGET & PROPERTY TAXES

OUR TOWN, OUR FUTURE

2018 TAX DUE DATES: August 31 & October 31



Town of East Gwillimbury

CIVIC CENTRE HOURS

Monday to Friday
8:30 a.m. to 4:30 p.m.

PAYMENTS

BANK PAYMENTS



Online



Telephone



In person

AT THE CIVIC CENTRE

19000 Leslie Street, Sharon ON



Cash



Cheque



Debit

Payments must be received by the Town by the due date to avoid late payment charges. Unpaid taxes will be charged at 1.25% per month effective the first day of default. Failure to receive a tax bill does not exempt the taxpayer from late charges.

DID YOU KNOW?

East Gwillimbury continues to be one of the few debt free municipalities in Ontario and residents continue to pay the lowest relative taxes in York Region.

Council approved the 2018 budget in November 2017. This is the earliest budget to be passed in Town history and, through early adoption, the Town has been able to receive better pricing for major projects and initiatives.

The Town's total 2018 tax levy increase is 2.25% which is equal to approximately \$36 per year for the average home.

HOW DID WE GET THERE?



1% of the increase is dedicated to supporting Council's multi-year focus on community safety. The budget will provide for a number of new initiatives including an additional full time firefighter, increased training, as well as increased community outreach and public education.



1.25% of the increase is to continue the provision of the Town's quality programs and services. This includes:

- ✓ Funding for two new multi-year contractual agreements for waste collection and animal control
- ✓ Trail improvements, new parks and park replacements
- ✓ Improvements to Town infrastructure (e.g., road resurfacing)



The 2018 Budget can be found on the Town's website at www.eastgwillimbury.ca.

OWNERS OF NEWLY CONSTRUCTED HOMES

If a home is newly constructed, the tax bill may only reflect the value of the land only, and exclude the building. This will continue until the Municipal Property Assessment Corporation (MPAC) assesses the building. This assessment, which could take up to three years to occur, will result in a higher tax bill.

Once assessed, a supplementary tax bill will be issued for the building, representing the additional taxes owing retroactive to the date of possession/occupancy of the home. Homeowners should budget for the payment of this supplementary tax bill.



DEFERRAL PROGRAM

This program allows qualifying seniors and low-income disabled homeowners to defer the increase of their taxes from one year to the next, interest free, until the home is sold or a change of title occurs. Once this occurs, all deferred money must be repaid to the Town.

A similar program is also available for water/wastewater bills. For more information please contact Customer Service.