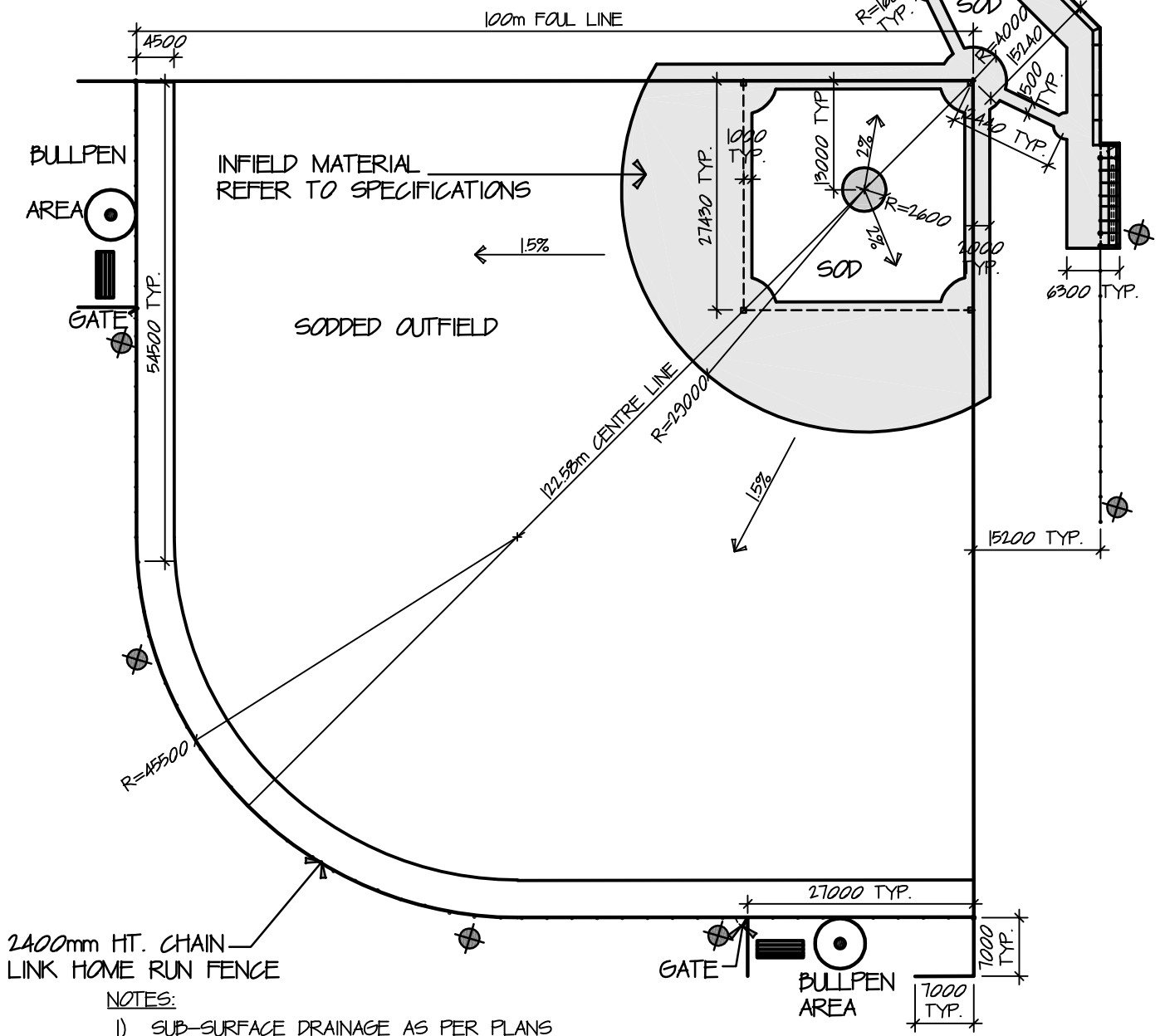


FLOOD LIGHTS- 1000 WATT
METAL HALIDE FIXTURES WITH
SHARP CUT-OFF OPTICS AND
BEAM CONTROL. MOUNTING
HEIGHT TO BE 70 ON
SPUN CONCRETE POLES

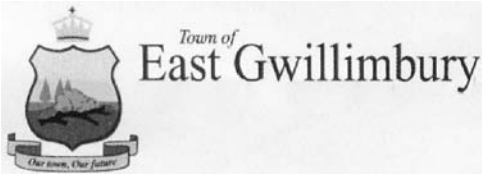
PLAYER'S
BENCH

BACKSTOP
REFER TO
DETAIL 103



NOTES:

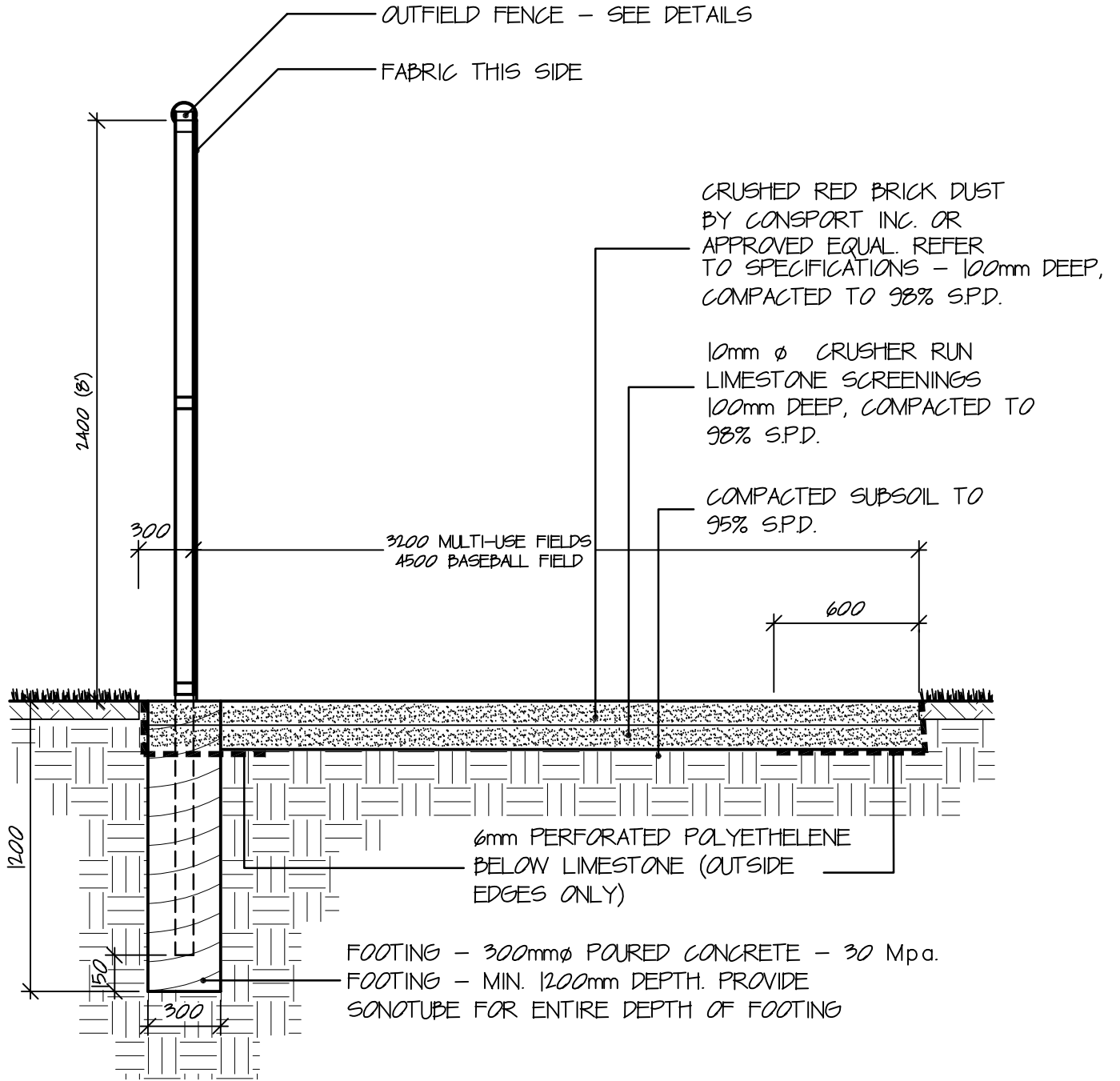
- 1) SUB-SURFACE DRAINAGE AS PER PLANS
- 2) INFIELD MATERIAL TO BE 200mm DEEP WASHINGTON BALL MIX INFILLED CLAY BY MAR-CO. OR APPROVED EQUAL ON 100mm DEEP 19mm Ø CRUSHER RUN LIMESTONE. PLACED COMPACTED TO 98% SPD.
- 3) WARNING TRACK TO BE 100mm DEEP WASHINGTON BALL MIX INFILLED CLAY BY MAR-CO. OR APPROVED EQUAL ON 100mm DEEP 10mm Ø CRUSHER RUN LIMESTONE. PLACE AND COMPACT TO 98% SPD.
- 4) PREFERRED ORIENTATION: A LINE RUNNING FROM HOME PLATE TO 2ND BASE SHOULD POINT 10° EAST OF NORTH.



**SENIOR BASEBALL
DIAMOND**

STANDARD DETAIL

APPROVED	DWG. No. 101
REVISION No.	
DATE 2009	



Town of
East Gwillimbury

**BASEBALL/SOFTBALL
FIELD WARNING TRACK**

STANDARD DETAIL

APPROVED

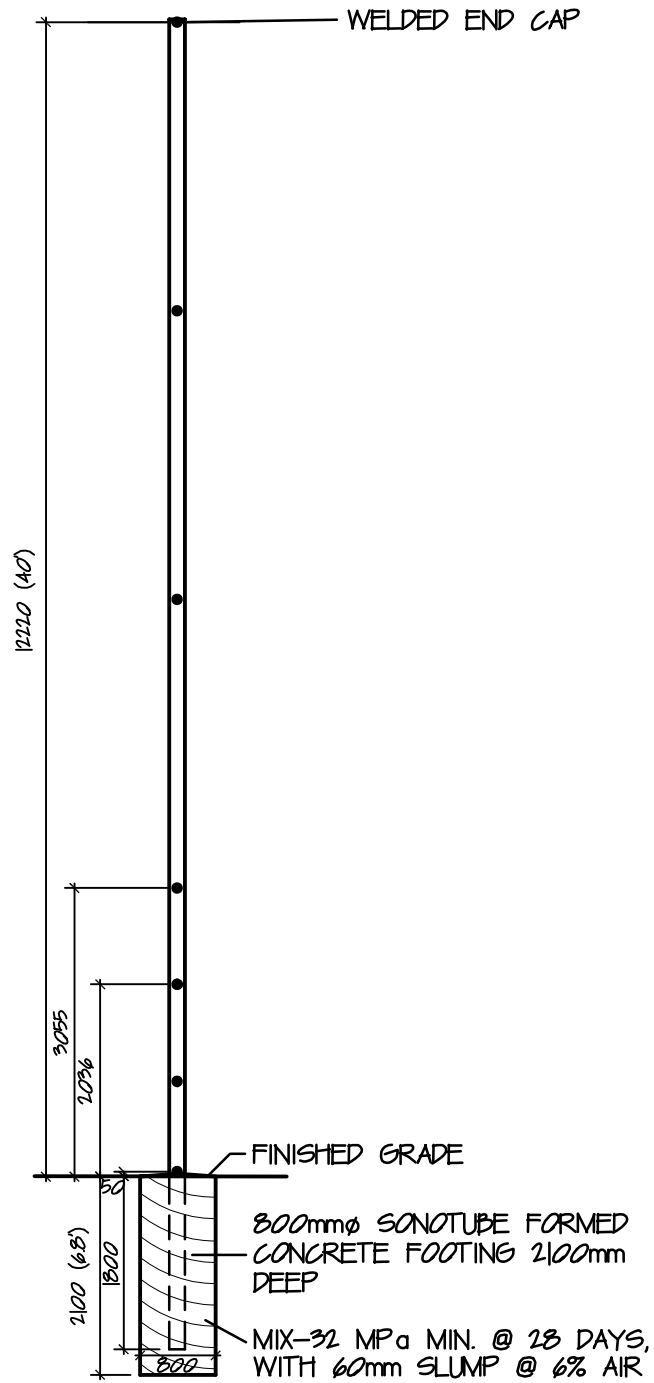
DWG. No.

REVISION No.

102

DATE

2009



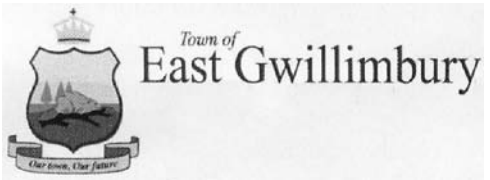
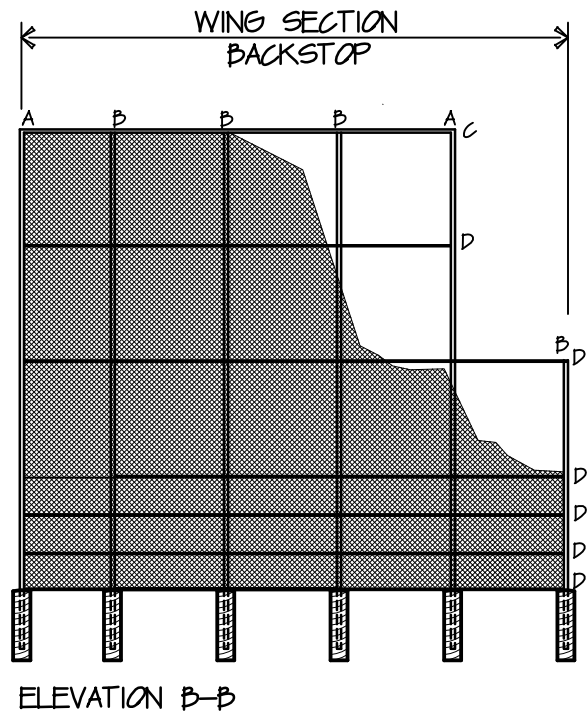
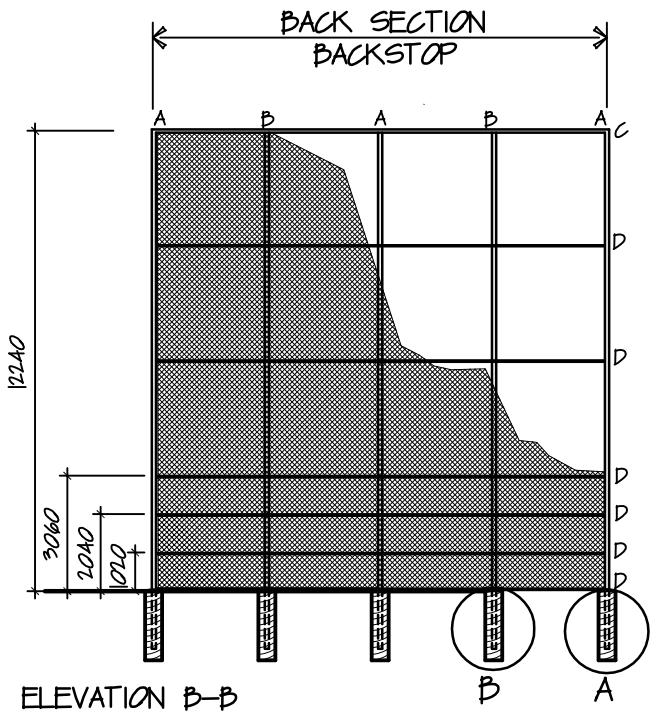
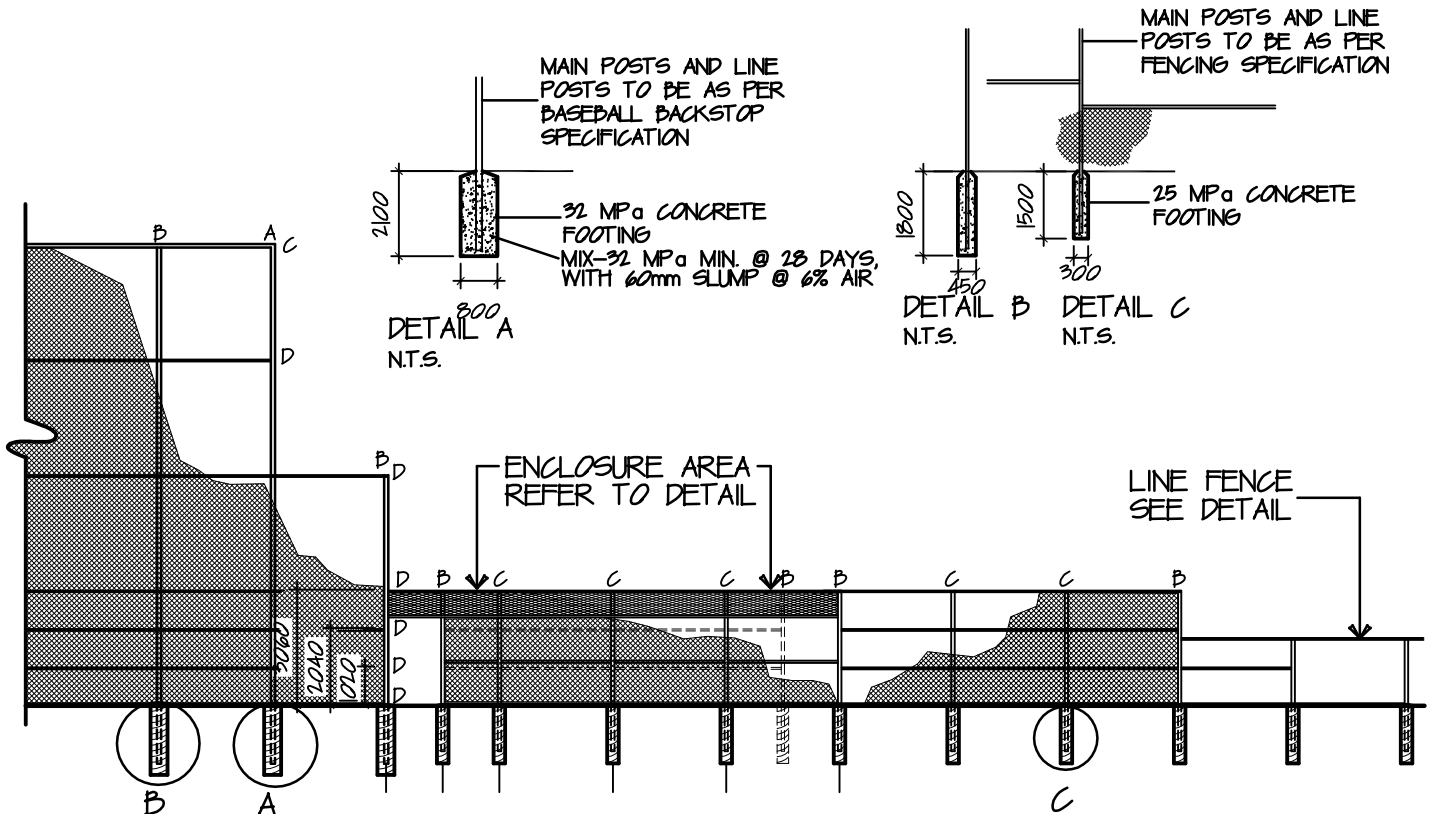
Town of
East Gwillimbury

**BASEBALL FIELD BACKSTOP
FENCE - SECTION (2 OF 4)**

STANDARD DETAIL

APPROVED	DWG. No.
REVISION No.	104
DATE	

2009



BASEBALL FIELD BACKSTOP FENCE - ELEVATION(3 OF 4)

STANDARD DETAIL	
APPROVED	DWG. No.
REVISION No.	105
DATE	
2009	

STRUCTURAL NOTES

- (A) MAIN POSTS 168mm (6-1/2") OD GALVANIZED STEEL PIPE
- (B) MAIN POSTS 114mm (4-1/2") OD GALVANIZED STEEL PIPE
- (C) MAIN POSTS 90mm (3-1/2") OD GALVANIZED STEEL PIPE
- (D) RAILS 64mm (2-1/2") OD GALVANIZED STEEL PIPE
- (E) RAILS 48mm (2") OD GALVANIZED STEEL PIPE
- (F) END CAPS ALL END CAPS MUST BE WELDED IN PLACE
- (G) MESH CHAIN LINK FABRIC FOR BACKSTOP, WINGS AND PLAYERS ENCLOSURE TO BE 50mm (2") MESH OF GALVANIZED STEEL, 6 GAUGE WIRE, EDGES KNUCKLED UNDER

GENERAL NOTES

- 1) ALL POSTS, RAILS, CAPS, ELBOWS AND OTHER JOINTS MUST BE WELDED.
- 2) TOP RAIL OF OVERHANG MUST BE CONTINUOUS PIPE.
- 3) CHAIN LINK FABRIC TO BE ATTACHED TO INSIDE OF BACKSTOP SCREEN AND THE TOP OF OVERHANG.
- 4) FABRIC OF OVERHANG TO EXTEND 25mm BEYOND PIPE FRAME.
- 5) TENSION BANDS TO BE 400mm O/C. BOLT ENDS TO BE AT BACK OF BACKSTOP SCREEN.
- 6) 9 GAUGE WIRE TIES TO BE 300mm O/C WRAPPED TWICE THROUGH MESH.
- 7) ALL STEEL PIPE TO BE SCHEDULE 40 GALVANIZED.



Town of
East Gwillimbury

BASEBALL FIELD BACKSTOP FENCE - NOTES & SCHEDULES (4 OF 4)

STANDARD DETAIL

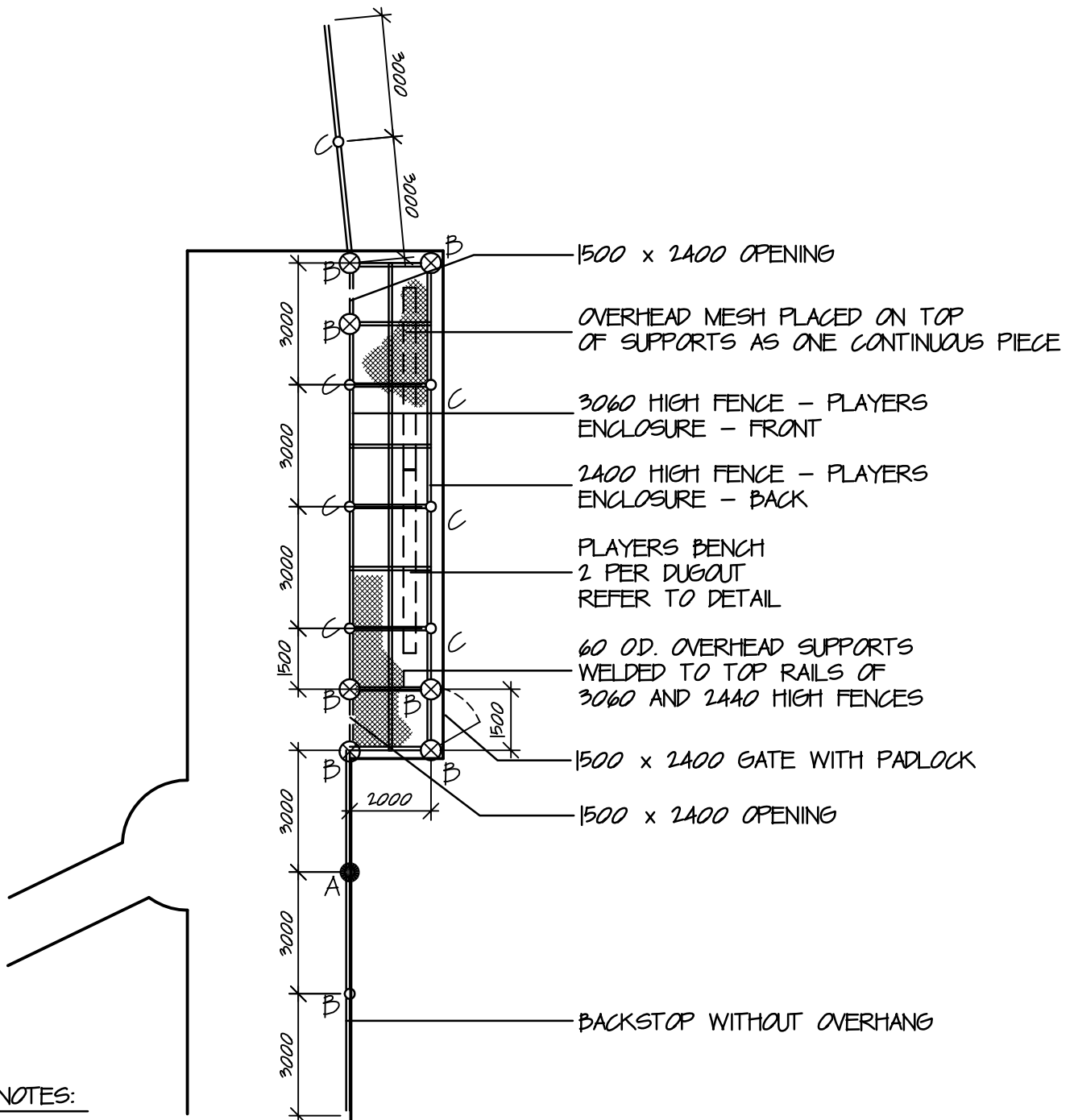
APPROVED

DWG. No.

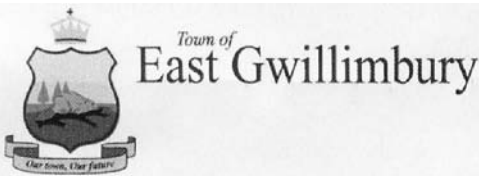
REVISION No.

106

DATE **2009**



1. DUGOUT TO BE OF ALL WELDED CONSTRUCTION.
2. CHAINLINK FABRIC TO BE 38 x 38 GALVANIZED MESH 35 mm (9 GAUGE) SECURED WITH STRETCHER BARS AND BAR BANDS @ 250 O.C. AND 35mm GALVANIZED WIRE TIES @ 250 O.C.

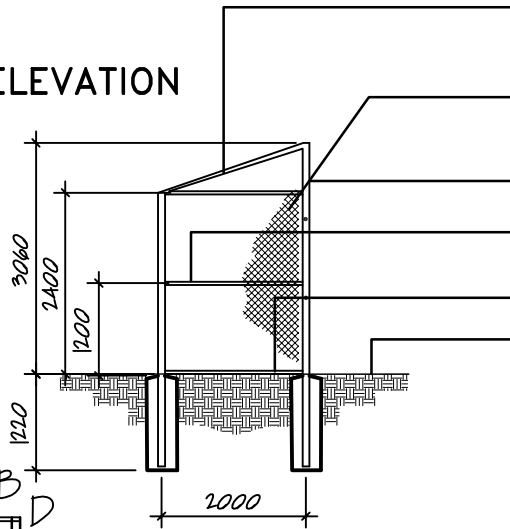


**BASEBALL PLAYERS
ENCLOSURE - DETAIL
PLAN (1 OF 2)**

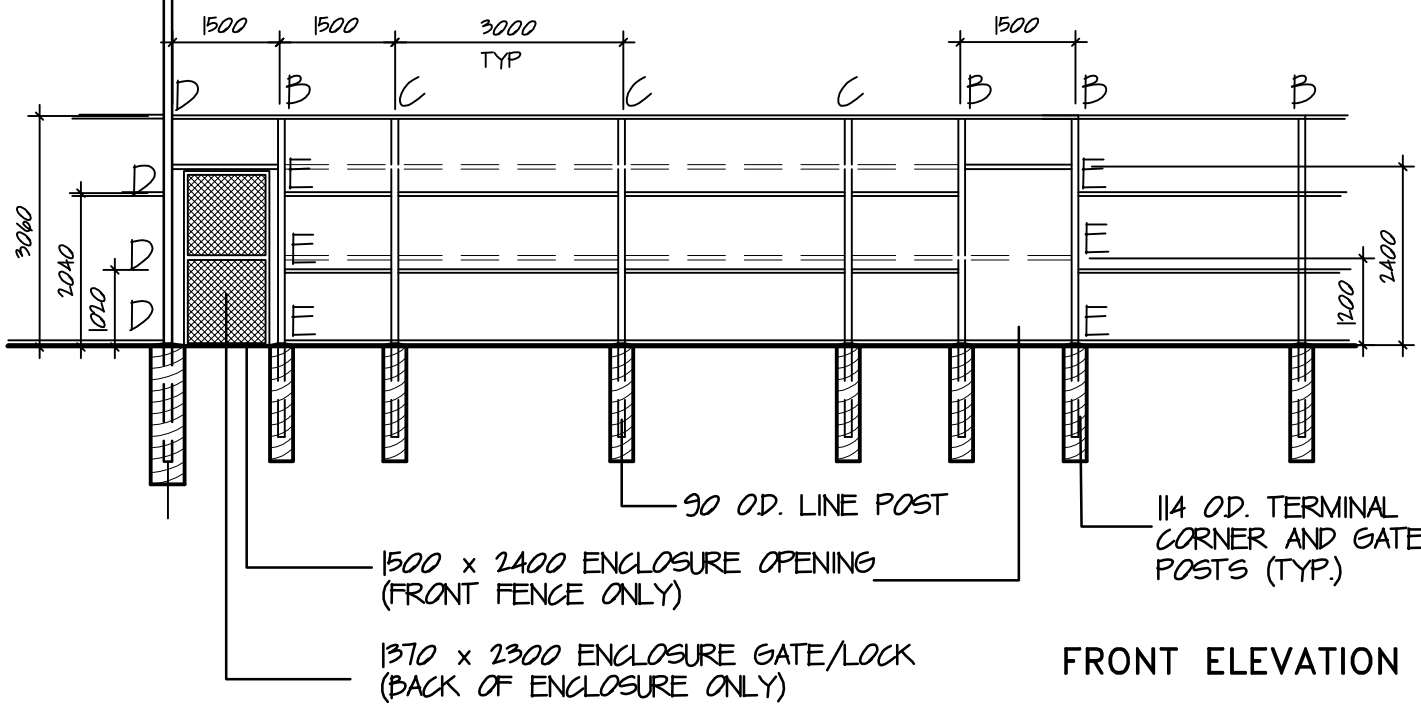
STANDARD DETAIL

APPROVED	DWG. No.
REVISION No.	107
DATE	
2009	

SIDE ELEVATION



60 OD. DUGOUT ROOF SUPPORTS WITH CHAIN LINK MESH SECURED WITH STRETCHER BARS AND BAR BANDS 250 O.C. AS ONE CONTINUOUS PIECE.
 CHAINLINK MESH ON ALL SIDES, SECURED WITH STRETCHER BARS AND BAR BANDS @ 250 O.C. AND 35mm GALVANIZED KNUCKLED TIES @ 250 O.C.
 114 OD. CORNER POSTS. 90 OD. LINE POSTS.
 48 OD. MIDRAIL
 48 OD. BOTTOM RAIL (TYP.)
 FINISH GRADE



FRONT ELEVATION

NOTES:

1. DUGOUT TO BE OF ALL WELD CONSTRUCTION
2. MESH SHALL BE 38 GALVANIZED CHAIN LINK 3.5mm (6 GAUGE ON WALLS, 9 GAUGE ON ROOF) SECURED WITH STRETCHER BARS AT POSTS AND BAR BANDS @ 250 OC AND KNUCKLED FASTENERS 3.5mm OD. @ 250 O.C.

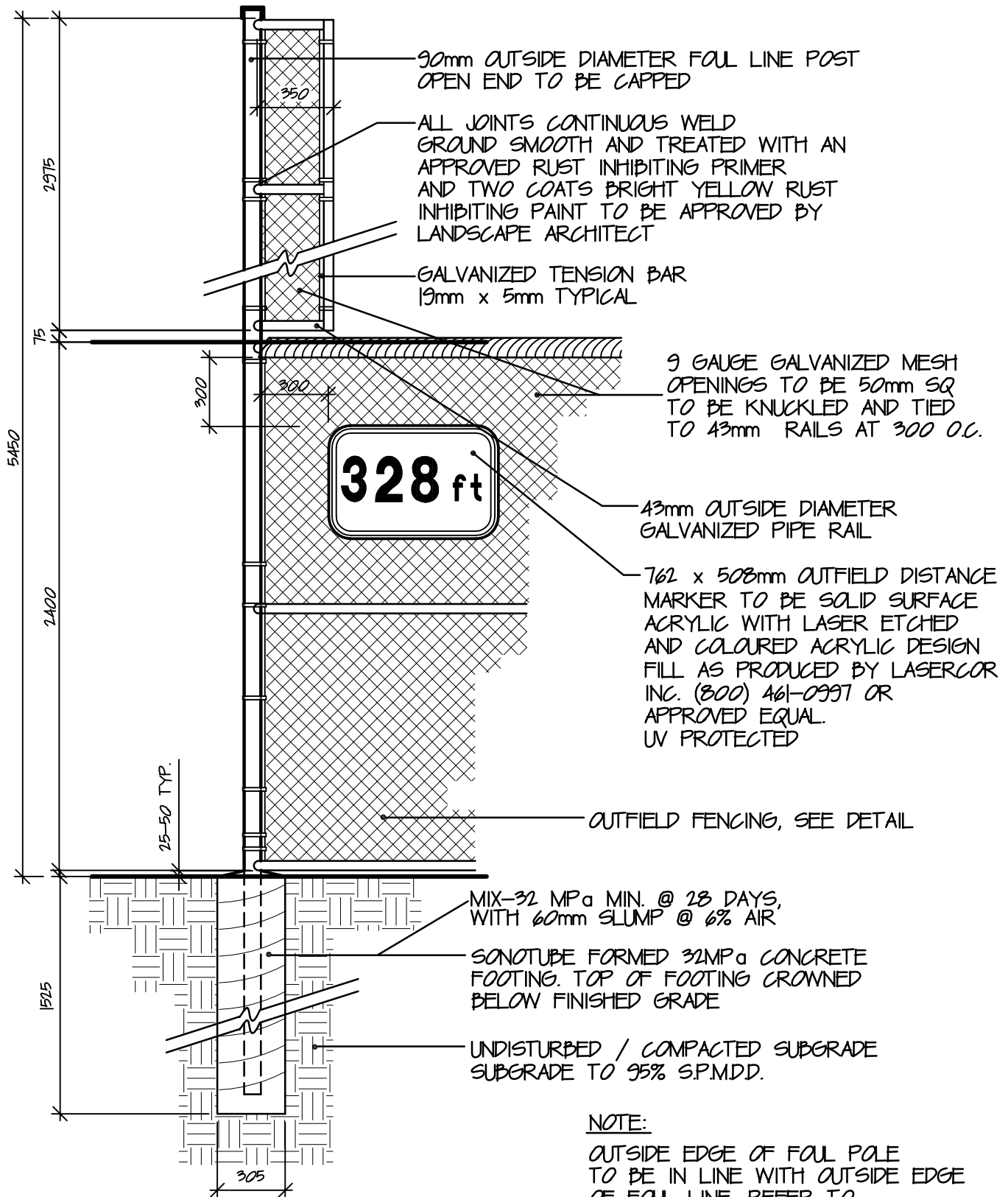


Town of
East Gwillimbury

**BASEBALL PLAYERS
ENCLOSURE - ELEVATION
& SECTION (2 OF 2)**

STANDARD DETAIL

APPROVED	DWG. No.
REVISION No.	108
DATE 2009	



NOTE:

OUTSIDE EDGE OF FOUL POLE TO BE IN LINE WITH OUTSIDE EDGE OF FOUL LINE. REFER TO BASEBALL LAYOUT.



Town of
East Gwillimbury

**BASEBALL FIELD FOUL
LINE POST - 5450mm**

STANDARD DETAIL

APPROVED

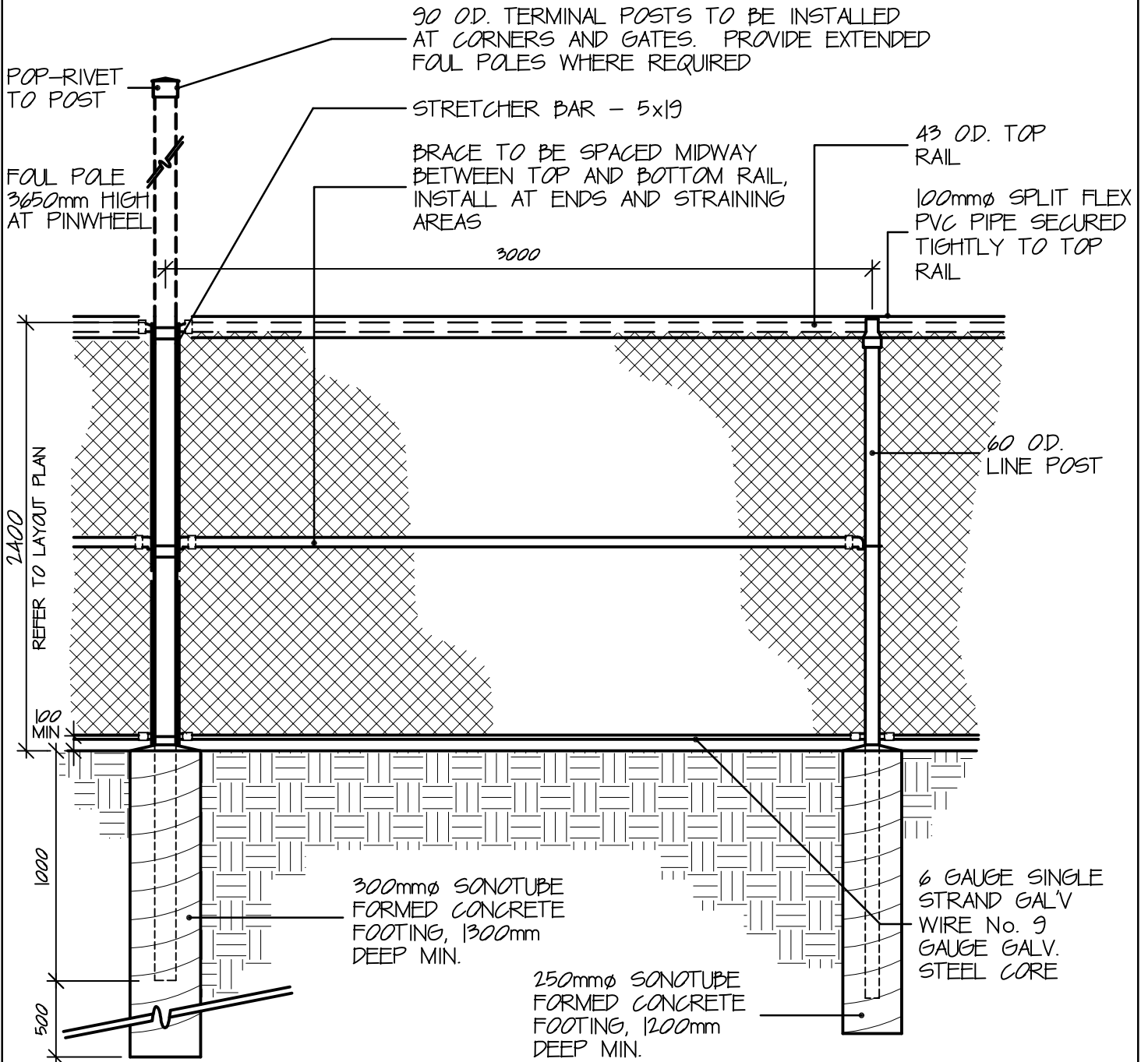
DWG. No.

REVISION No.

109

DATE

2009



NOTES:

1-ALL FABRIC TO BE 1800 - No. 9 GAUGE GALVANIZED CHAINLINK WOVEN IN A 50mm MESH.

2-CONCRETE FOR FOOTINGS TO BE 25MP_a AT 28 DAYS.

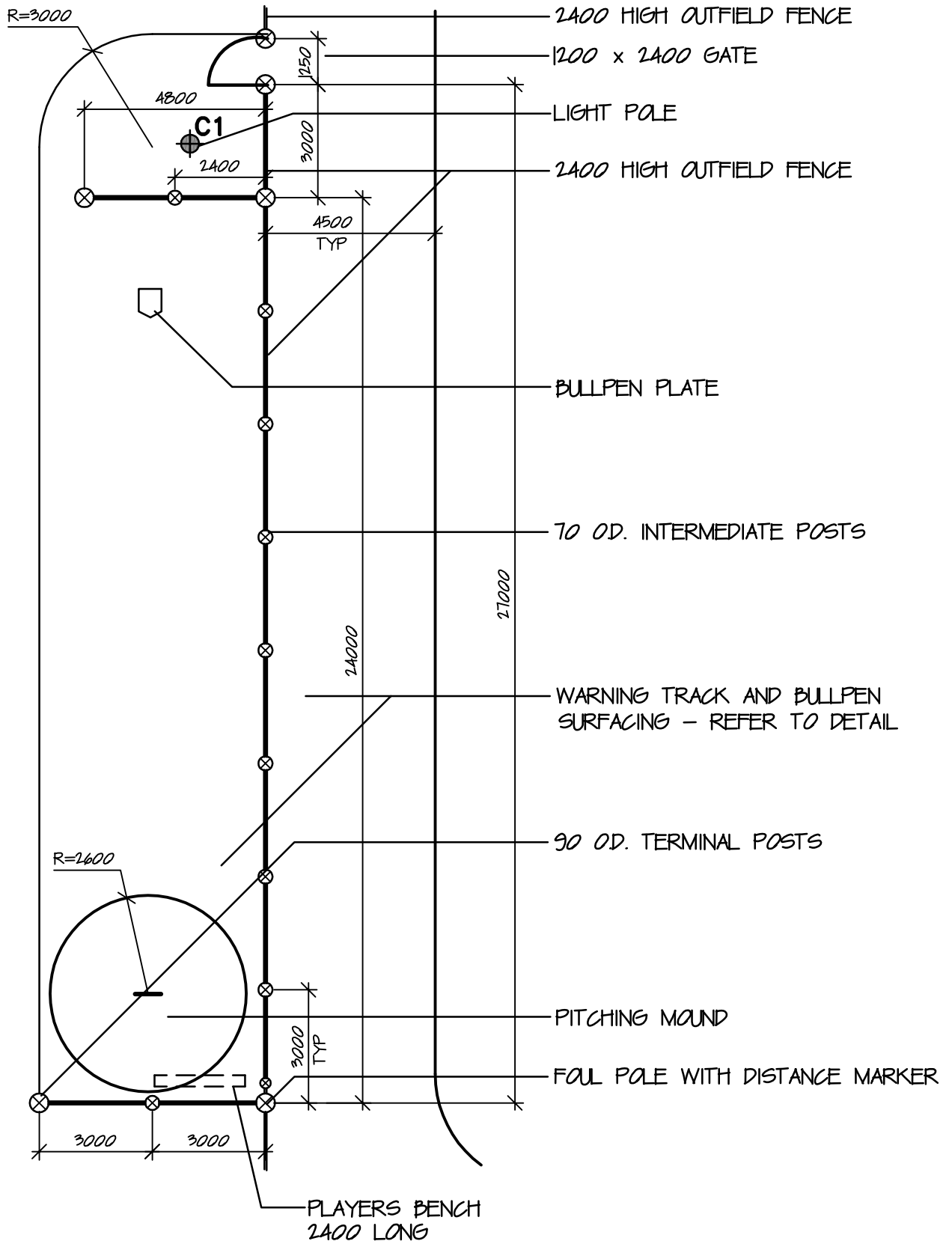


Town of East Gwillimbury

**OUTFIELD FENCE -
2400mm CHAIN LINK**

STANDARD DETAIL

APPROVED	DWG. No. 110
REVISION No.	
DATE 2009	



Town of
East Gwillimbury

**BASEBALL BULLPEN
- DETAIL PLAN**

STANDARD DETAIL

APPROVED

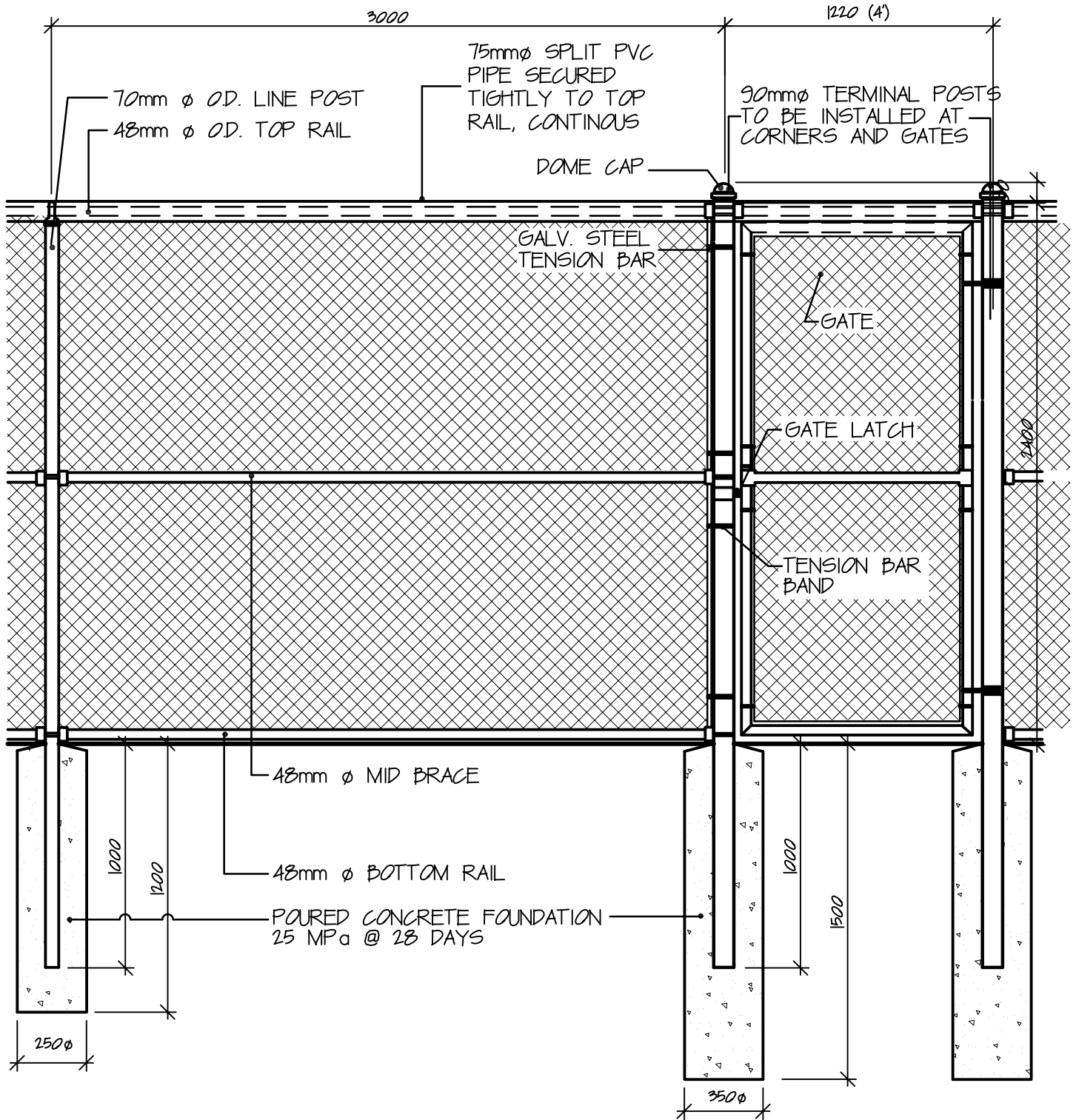
DWG. No.

REVISION No.

111

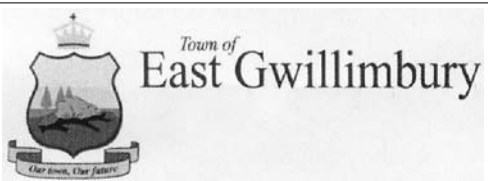
DATE

2009



NOTE:

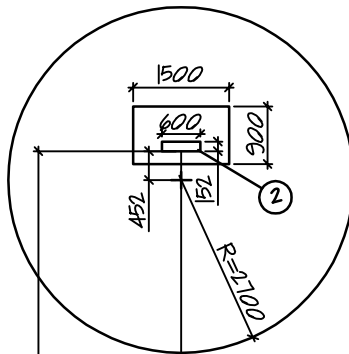
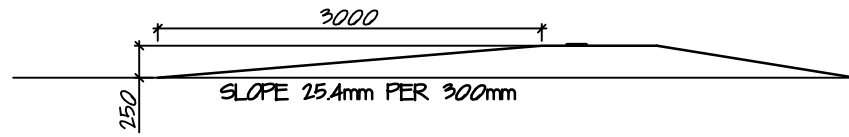
CHAINLINK FABRIC TO BE 50mm (2") MESH OF GALVANIZED STEEL, 6 GAUGE WIRE, EDGES KNUCKLED UNDER.



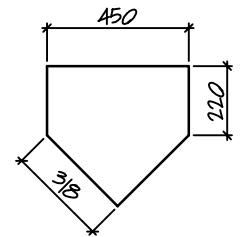
BASEBALL BULLPEN - FENCE & GATE

STANDARD DETAIL

APPROVED	DWG. No.
REVISION No.	112
DATE	
2009	



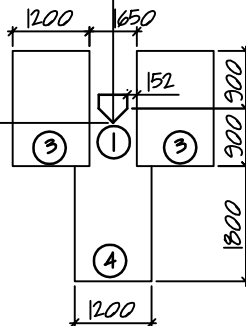
18440

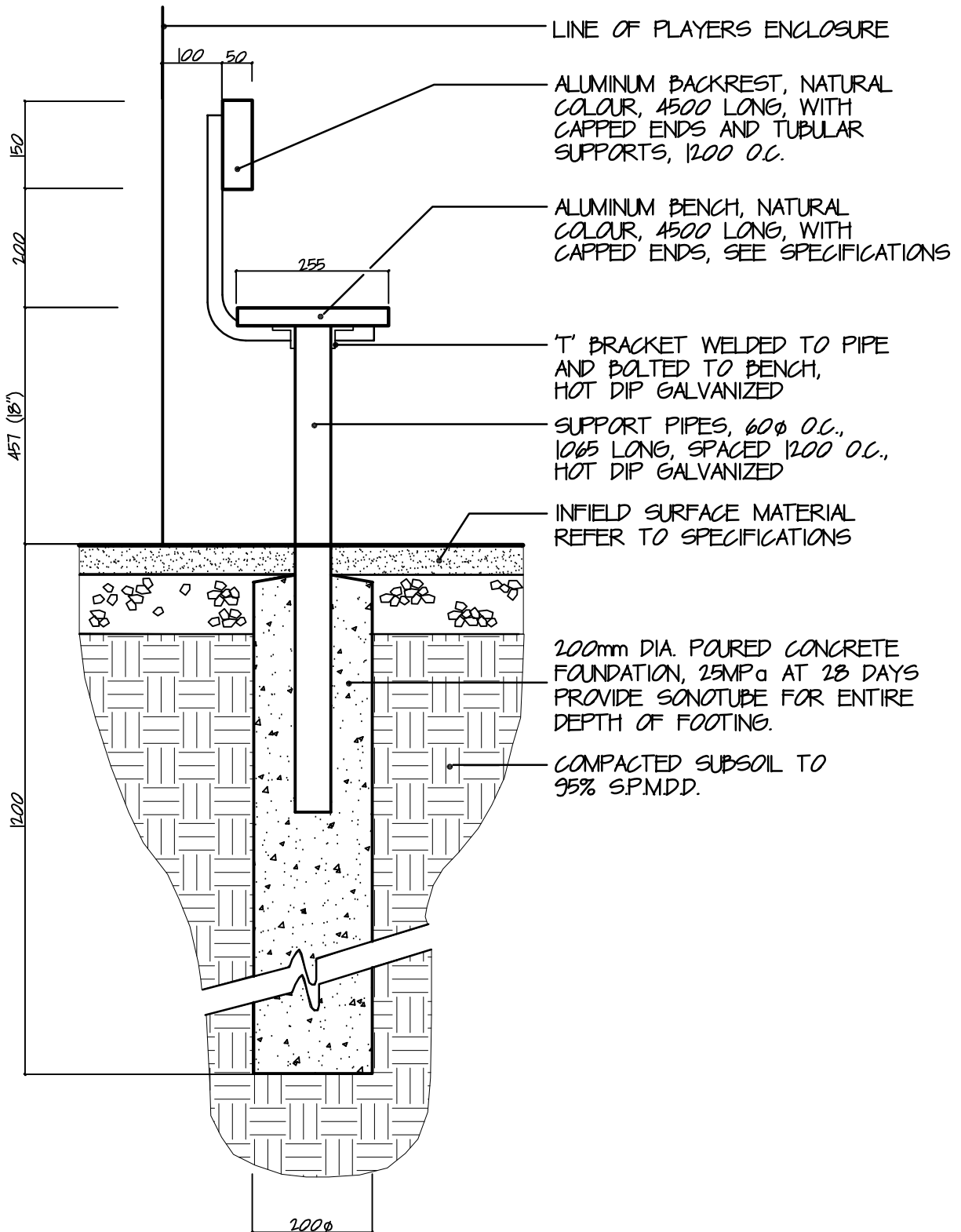


HOME PLATE

LEGEND

- ① HOME PLATE
- ② PITCHER'S PLATE
- ③ BATTER'S BOX
- ④ CATCHER'S BOX





Town of
East Gwillimbury

**PLAYERS BENCH
- BASEBALL**

STANDARD DETAIL

APPROVED

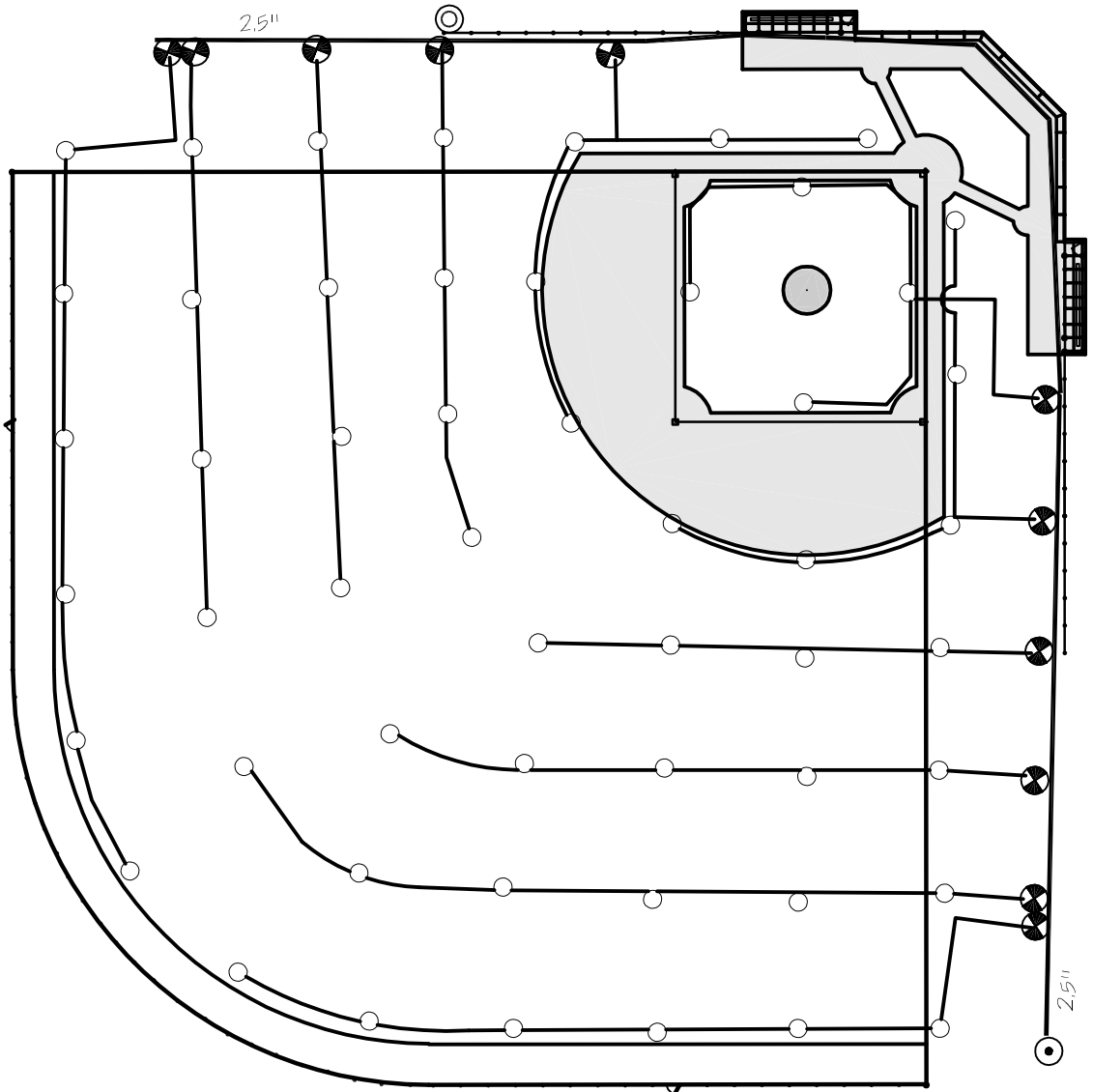
DWG. No.

REVISION No.

114

DATE

2009



NOTES:

- 1) PIPE SIZES ARE FOR REFERENCE ONLY. SIZING TO BE CALCULATED BASED ON SITE SPECIFICS.
- 2) IRRIGATION SYSTEM SHOULD ALSO INCLUDE THE FOLLOWING: RAIN SENSOR, CONTROLLER, BACKFLOW PREVENTER AND WATER METER

LEGEND:

- SPRINKLER HEAD
- ⊗ ELECTRIC CONTROL VALVE
- ⊙ QUICK COUPLING VALVE
- ⊕ FROST-PROOF WINTER HYDRANT

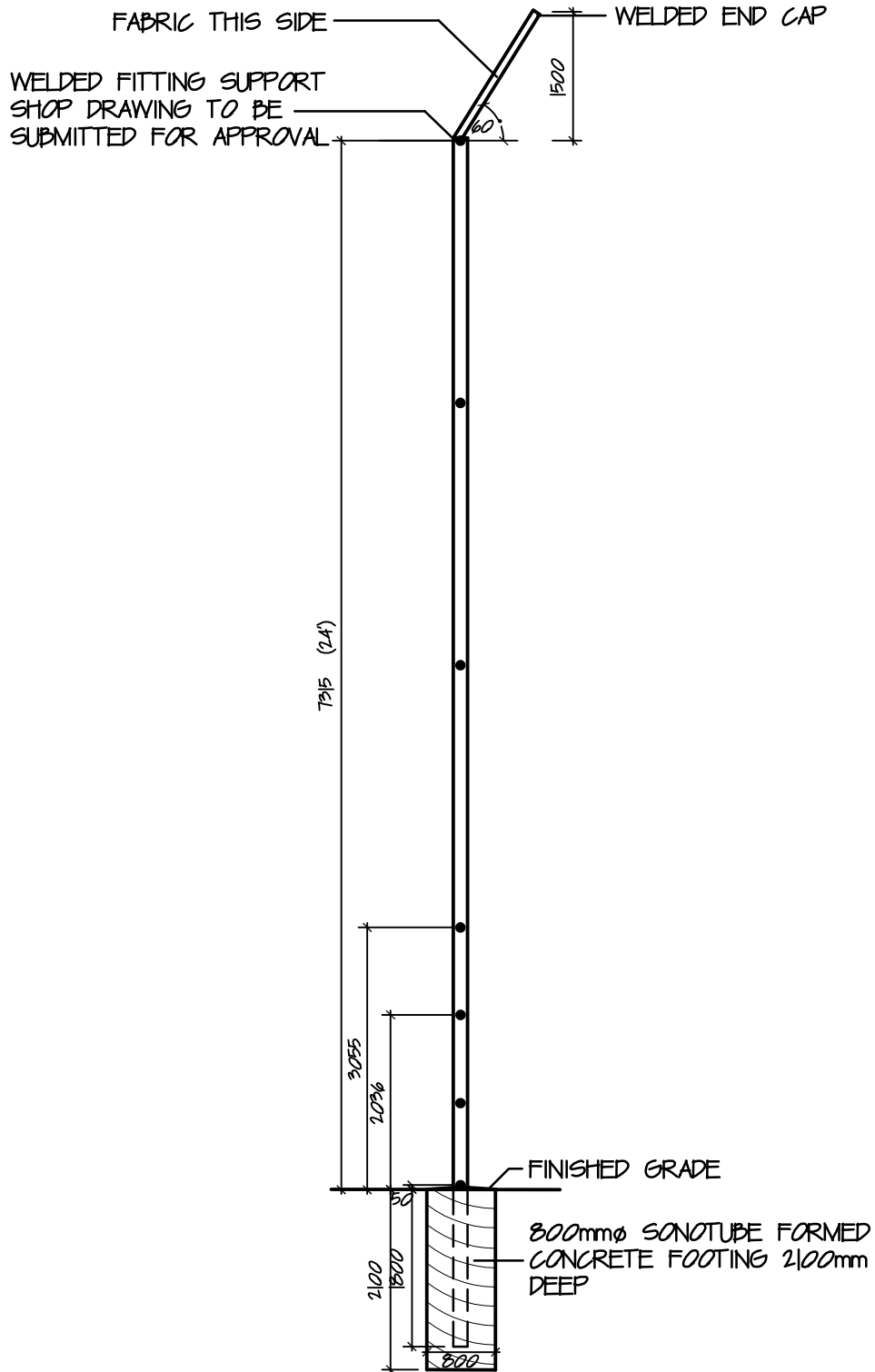


Town of
East Gwillimbury

**SENIOR BASEBALL DIAMOND
TYPICAL IRRIGATION LAYOUT
(SCHEMATIC)**

STANDARD DETAIL

APPROVED	DWG. No.
REVISION No.	115
DATE 2009	



Town of
East Gwillimbury

**SENIOR SOFTBALL FIELD
BACKSTOP FENCE -
SECTION (2 OF 4)**

STANDARD DETAIL

APPROVED

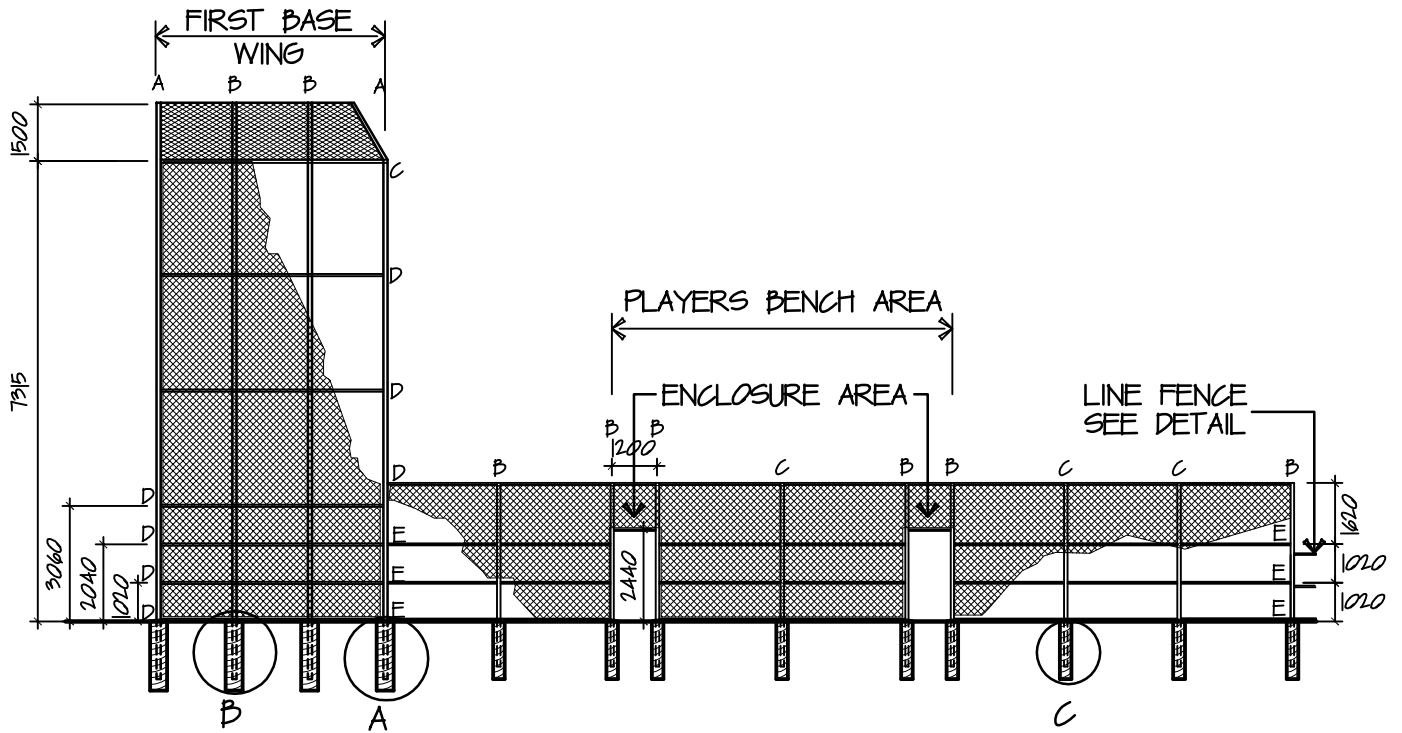
DWG. No.

REVISION No.

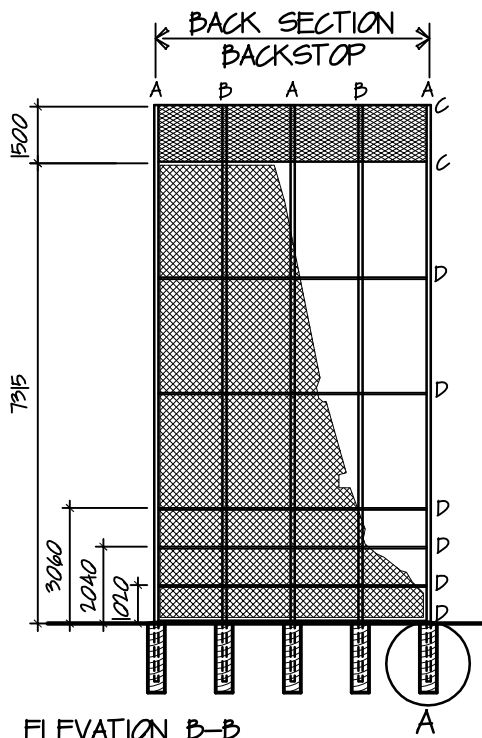
118

DATE

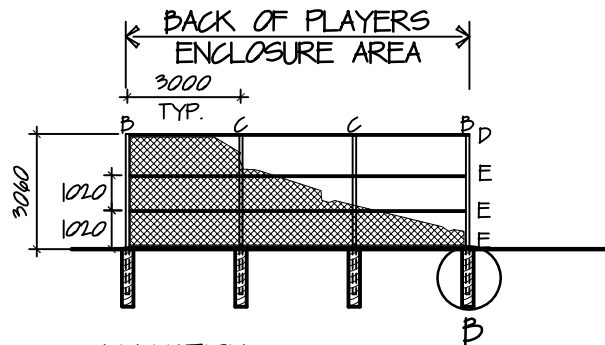
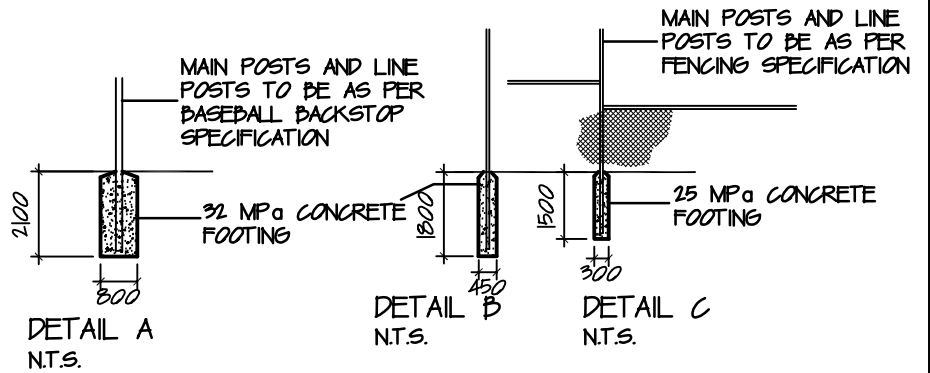
2009



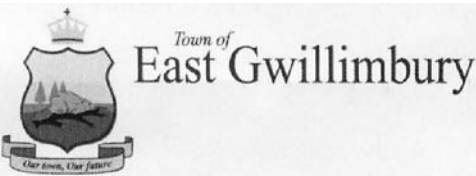
ELEVATION A-A



ELEVATION B-B



ELEVATION C-C



**SENIOR SOFTBALL FIELD
BACKSTOP FENCE -
ELEVATION (3 OF 4)**

STANDARD DETAIL

APPROVED	DWG. No. 119
REVISION No.	
DATE 2009	

STRUCTURAL NOTES

- (A) MAIN POSTS 168mm (6-1/2") OD GALVANIZED STEEL PIPE
- (B) MAIN POSTS 114mm (4-1/2") OD GALVANIZED STEEL PIPE
- (C) MAIN POSTS 90mm (3-1/2") OD GALVANIZED STEEL PIPE
- (D) RAILS 64mm (2-1/2") OD GALVANIZED STEEL PIPE
- (E) RAILS 48mm (2") OD GALVANIZED STEEL PIPE
- (F) END CAPS ALL END CAPS MUST BE WELDED IN PLACE
- (G) MESH OVERHANG CHAIN LINK FABRIC FOR BACKSTOP, WINGS AND PLAYERS ENCLOSURE TO BE 50mm (2") MESH OF GALVANIZED STEEL, 6 GAUGE WIRE, EDGES KNUCKLED UNDER

GENERAL NOTES

- 1) ALL POSTS, RAILS, CAPS, ELBOWS AND OTHER JOINTS MUST BE WELDED.
- 2) TOP RAIL OF OVERHANG MUST BE CONTINUOUS PIPE.
- 3) CHAIN LINK FABRIC TO BE ATTACHED TO INSIDE OF BACKSTOP SCREEN AND THE TOP OF OVERHANG.
- 4) FABRIC OF OVERHANG TO EXTEND 25mm BEYOND PIPE FRAME.
- 5) TENSION BANDS TO BE 400mm O/C. BOLT ENDS TO BE AT BACK OF BACKSTOP SCREEN.
- 6) 9 GAUGE WIRE TIES TO BE 300mm O/C WRAPPED TWICE THROUGH MESH.
- 7) ALL STEEL PIPE TO BE SCHEDULE 40 GALVANIZED.



Town of
East Gwillimbury

**SENIOR SOFTBALL FIELD
BACKSTOP FENCE - NOTES
& SCHEDULES (4 OF 4)**

STANDARD DETAIL

APPROVED

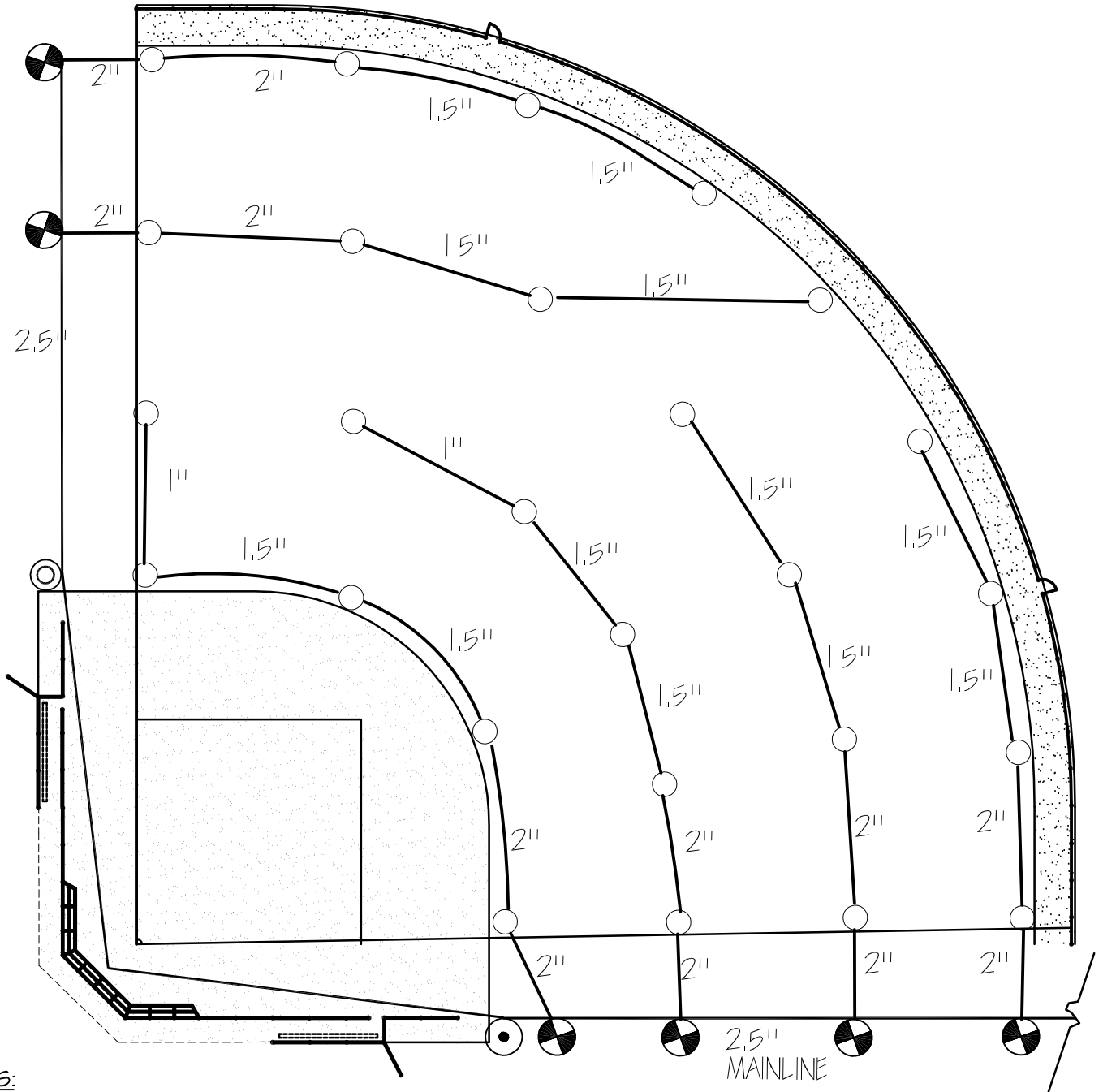
DWG. No.

REVISION No.

120

DATE

2009

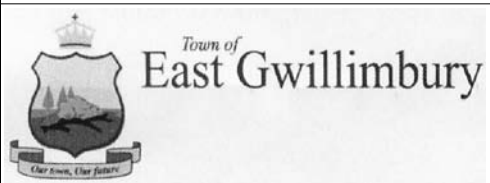


NOTES:

- 1) PIPE SIZES ARE FOR REFERENCE ONLY. SIZING TO BE CALCULATED BASED ON SITE SPECIFICS.
- 2) IRRIGATION SYSTEM SHOULD ALSO INCLUDE THE FOLLOWING: RAIN SENSOR, CONTROLLER, BACKFLOW PREVENTER AND WATER METER

LEGEND:

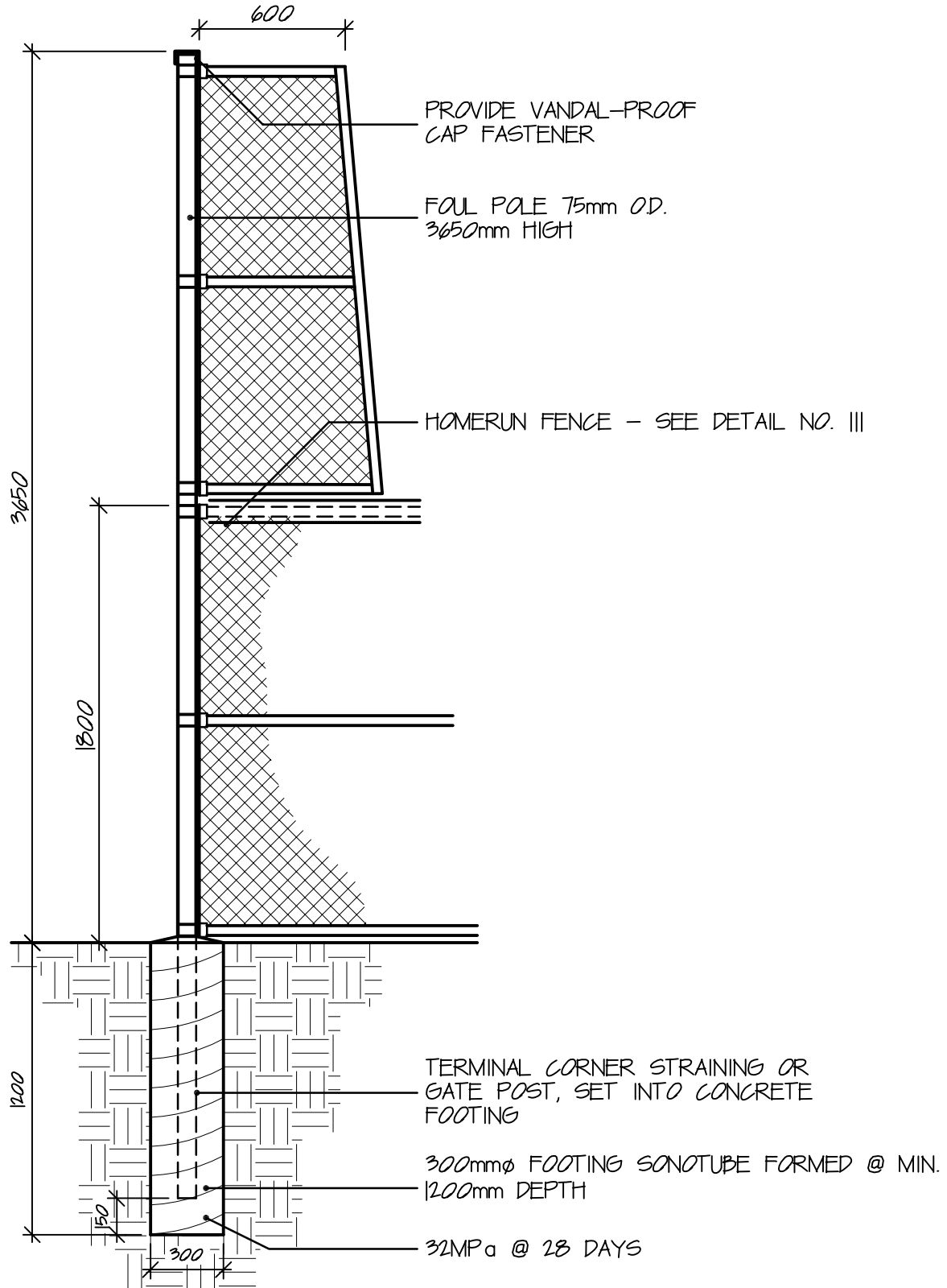
- SPRINKLER HEAD
- ⊗ ELECTRIC CONTROL VALVE
- ⊙ QUICK COUPLING VALVE
- ⊕ FROST-PROOF WINTER HYDRANT



**SENIOR SOFTBALL FIELD
TYPICAL IRRIGATION LAYOUT
(SCHEMATIC)**

STANDARD DETAIL

APPROVED	DWG. No. 121
REVISION No.	
DATE 2009	



Town of
East Gwillimbury

**SOFTBALL FIELD
FOUL POLE**

STANDARD DETAIL

APPROVED

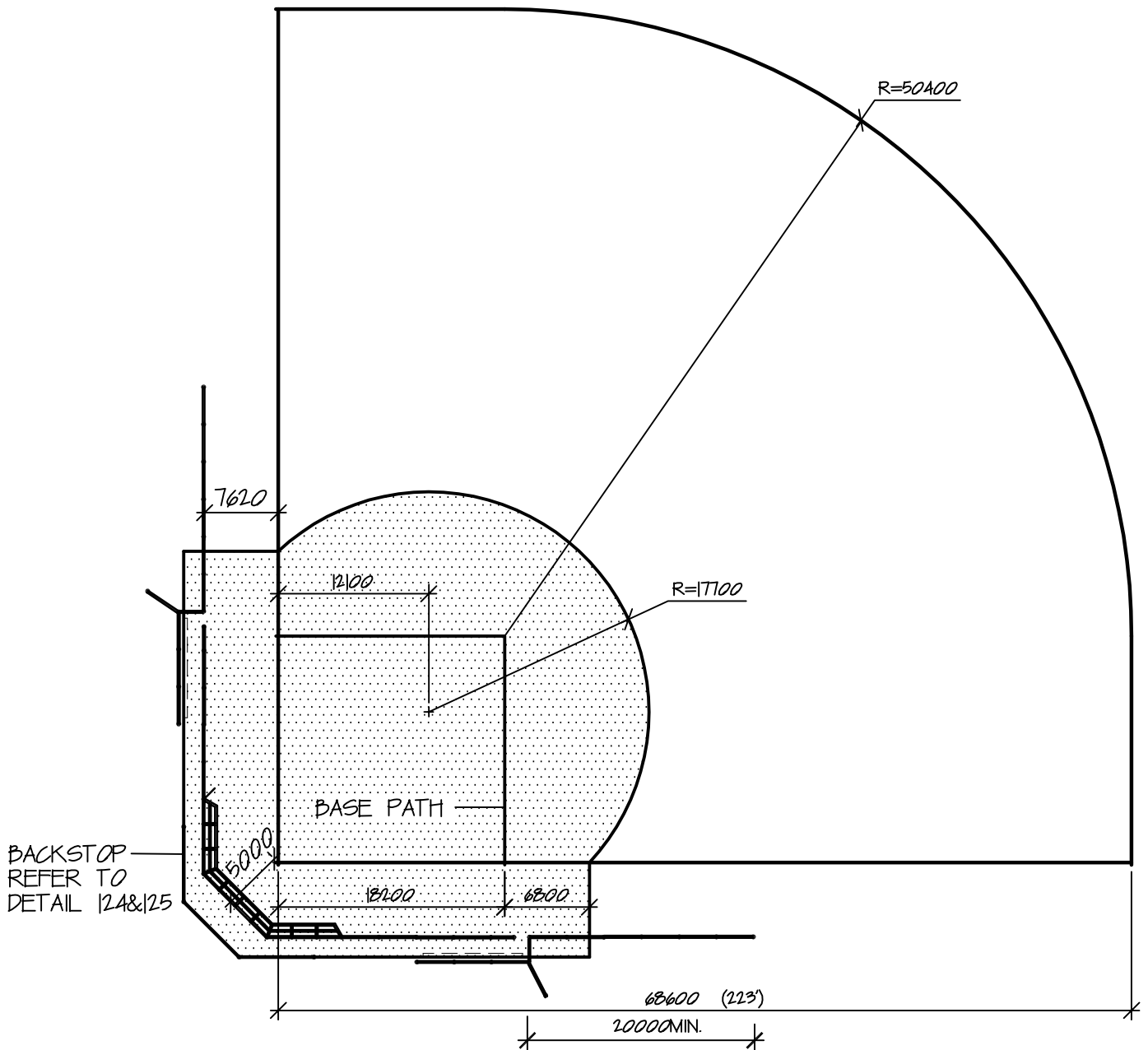
DWG. No.

REVISION No.

122

DATE

2009



NOTE:

- 1 ORIENTATION: HOME PLATE TO CENTRE FIELD - N/NE
- 2 ALL DIMENSIONS IN MILLIMETRES OR METRES UNLESS OTHERWISE NOTED



Town of
East Gwillimbury

**NEIGHBOURHOOD SOFTBALL
FIELD TYPICAL LAYOUT**

STANDARD DETAIL

APPROVED

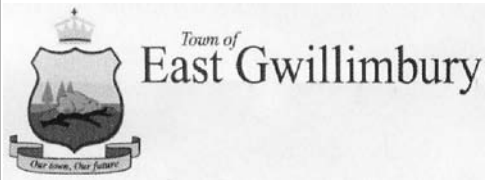
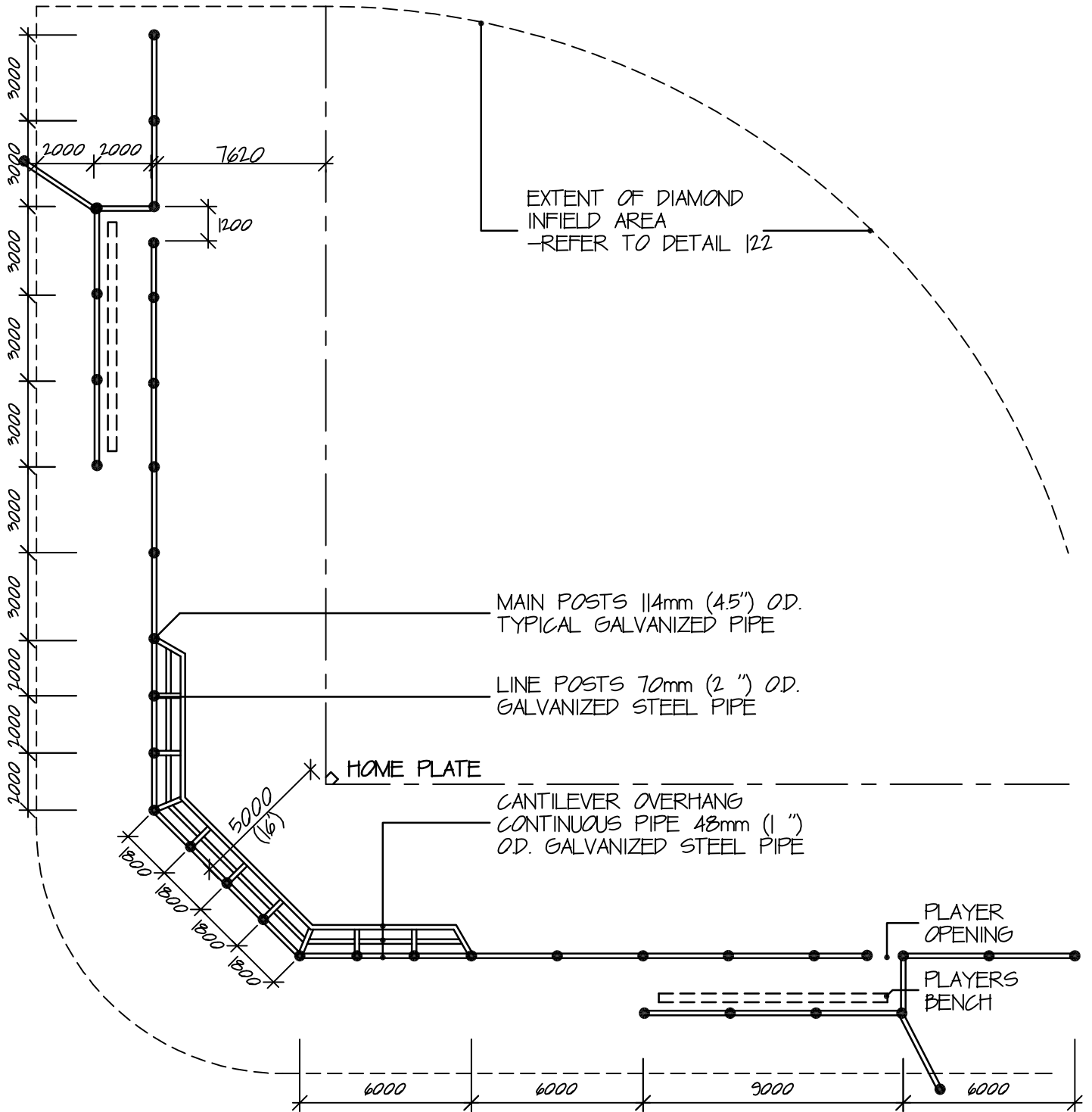
DWG. No.

REVISION No.

123

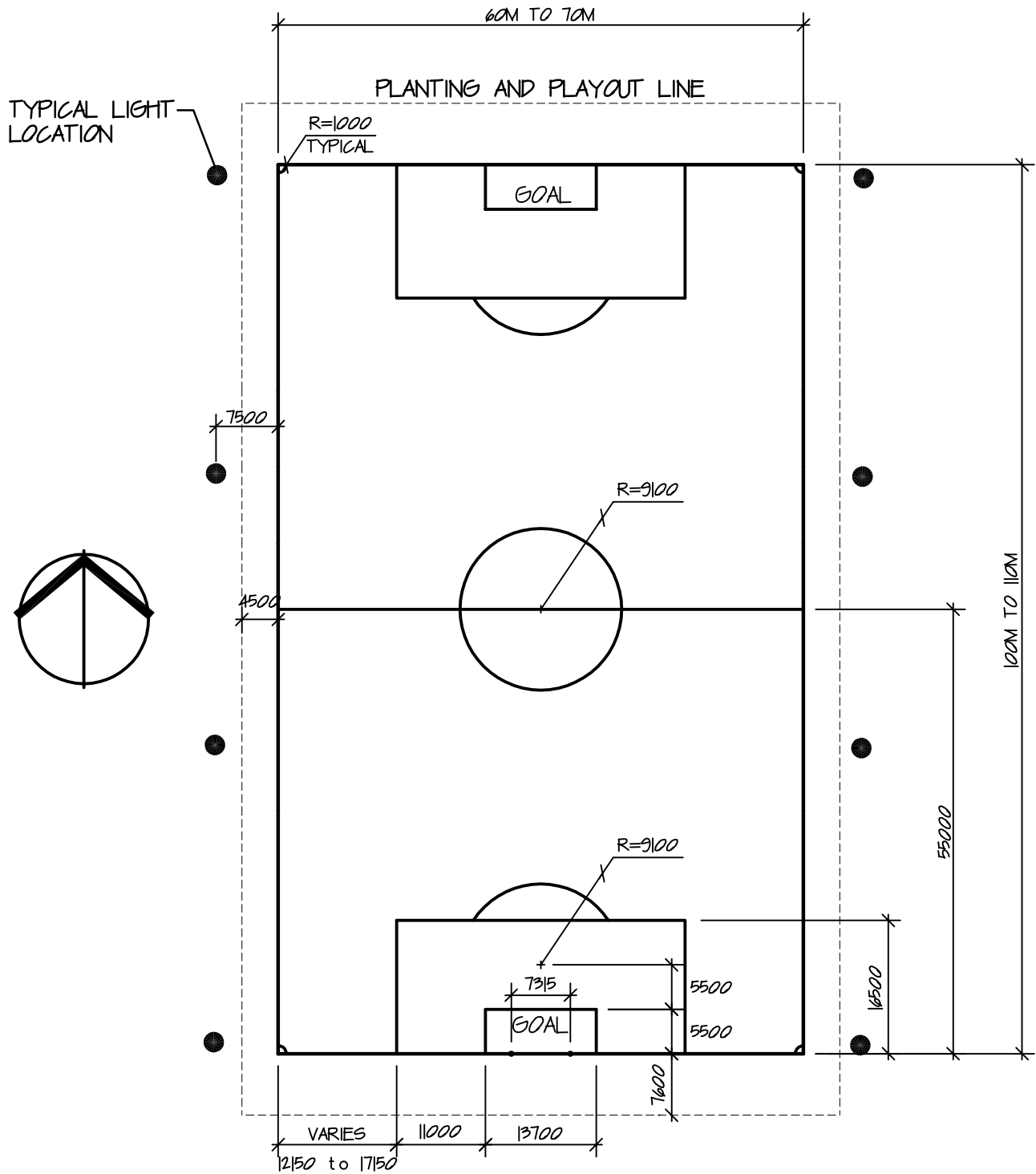
DATE

2009



NEIGHBOURHOOD SOFTBALL FIELD BACKSTOP FENCE - DETAIL

STANDARD DETAIL	
APPROVED	DWG. No.
REVISION No.	124
DATE	
2009	



NOTE:

- 1 ORIENTATION: GENERALLY NORTH/SOUTH
- 2 SOCCER PITCHES TO BE CENTRE CROWNED WITH MIN. 1% GRADE



Town of
East Gwillimbury

**SENIOR SOCCER PITCH
- 65m x 110m**

STANDARD DETAIL

APPROVED

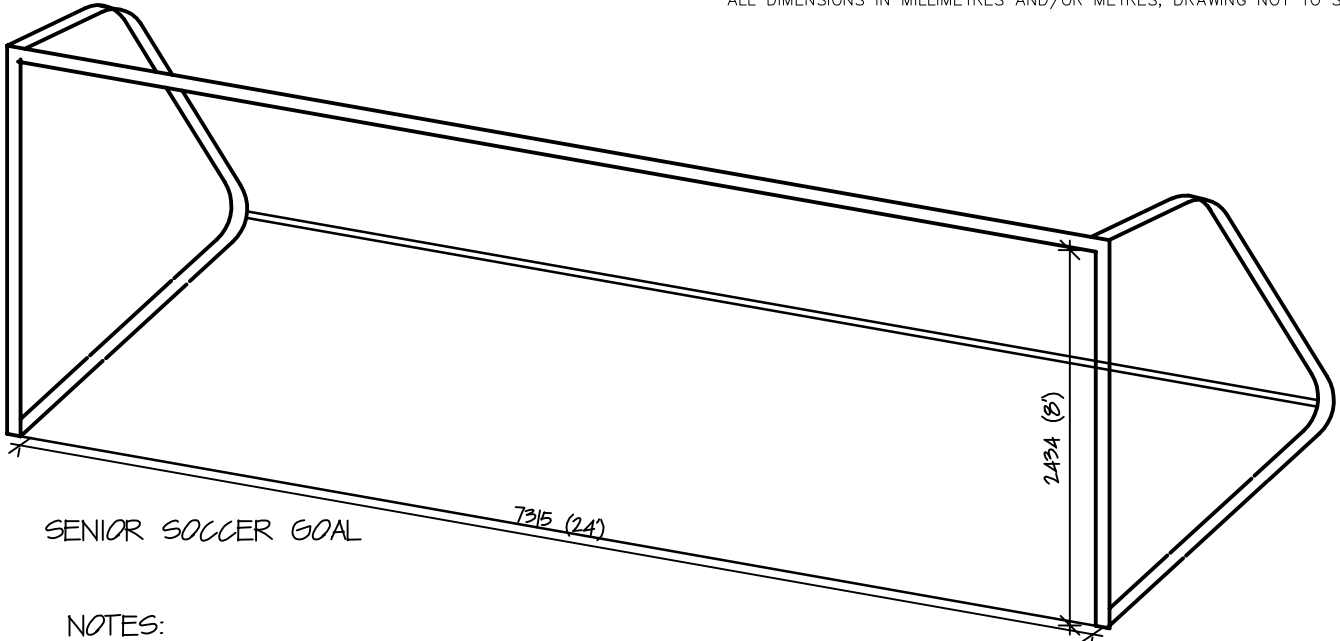
DWG. No.

REVISION No.

126

DATE

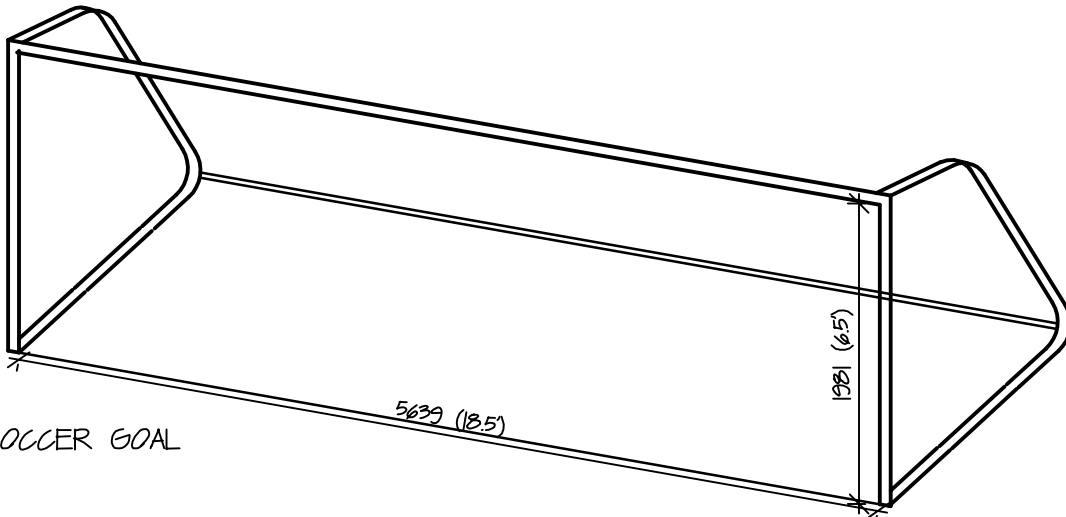
2009



SENIOR SOCCER GOAL

NOTES:

1. SCORE MASTER MODEL SMDM2400-PC GOAL OR APPROVED EQUIVALENT. COMPLETE WITH 16" PORTABLE GROUND ANCHOR PEGS AND NET CLIPS. PROVIDE BACK BOTTOM BAR.
2. NETTING COLOUR TO BE ORANGE, POLYETHYLENE, 5 1/2" MESH, ROPE SIZE 3mm, TWISTED STYLE.
3. SHOP DRAWINGS TO BE APPROVED BY CONSULTANT.



MINI SOCCER GOAL

- NOTES:
1. SCORE MASTER GOAL 6.5' x 18.5', OR APPROVED EQUIVALENT. COMPLETE WITH GROUND ANCHORS FOR PORTABLE GOALS, AND NET FASTENER. NET TO BE MODEL NO. JR-12A. PROVIDE BACK BOTTOM BAR.
 2. THIS GOAL MUST BE ANCHORED AT ALL TIMES.
 3. SHOP DRAWINGS TO BE APPROVED BY CONSULTANT.

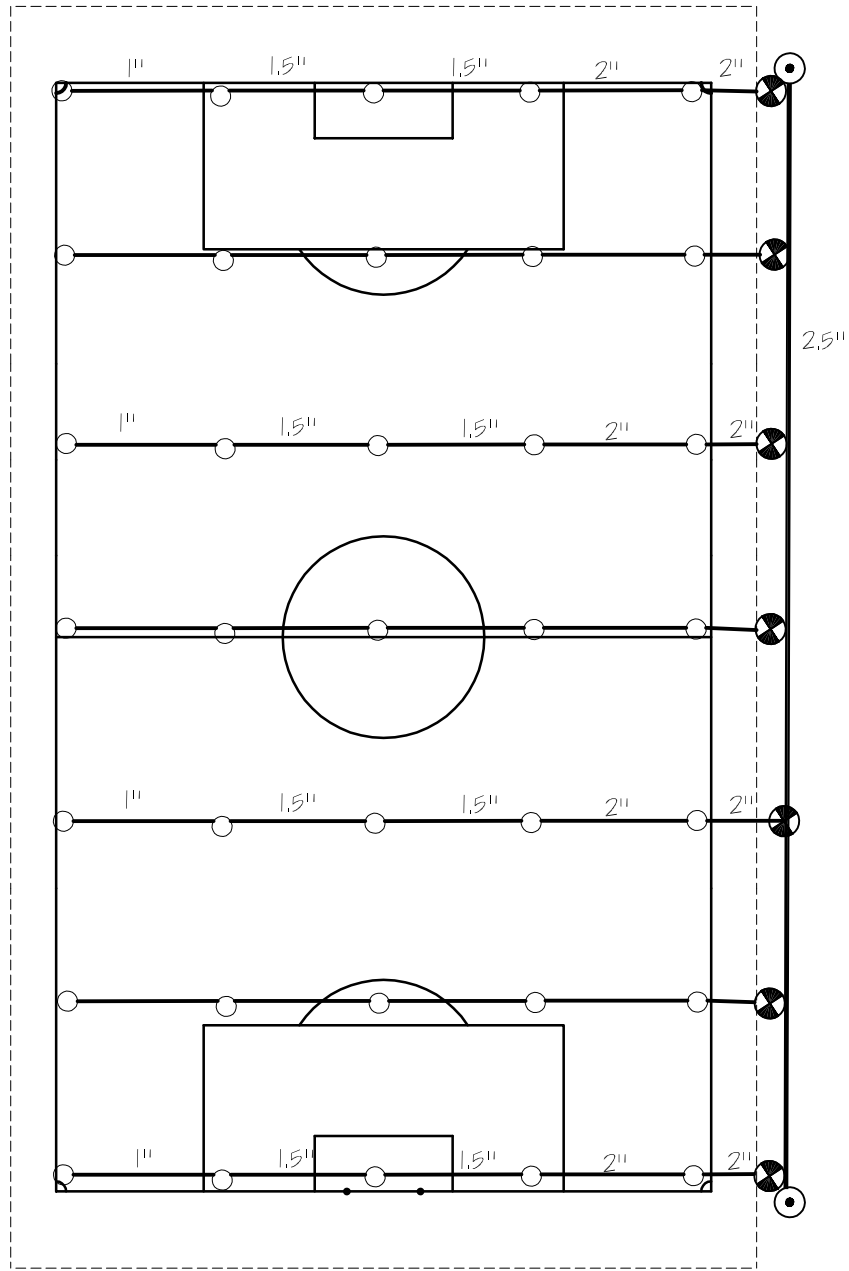


Town of
East Gwillimbury

SOCCER GOAL POSTS

STANDARD DETAIL




APPROVED	DWG. No.
REVISION No.	127
DATE	
2009	



NOTES:

- 1) PIPE SIZES ARE FOR REFERENCE ONLY. SIZING TO BE CALCULATED BASED ON SITE SPECIFICS.
- 2) IRRIGATION SYSTEM SHOULD ALSO INCLUDE THE FOLLOWING: RAIN SENSOR, CONTROLLER, BACKFLOW PREVENTER AND WATER METER

LEGEND:

-  SPRINKLER HEAD
-  ELECTRIC CONTROL VALVE
-  QUICK COUPLING VALVE

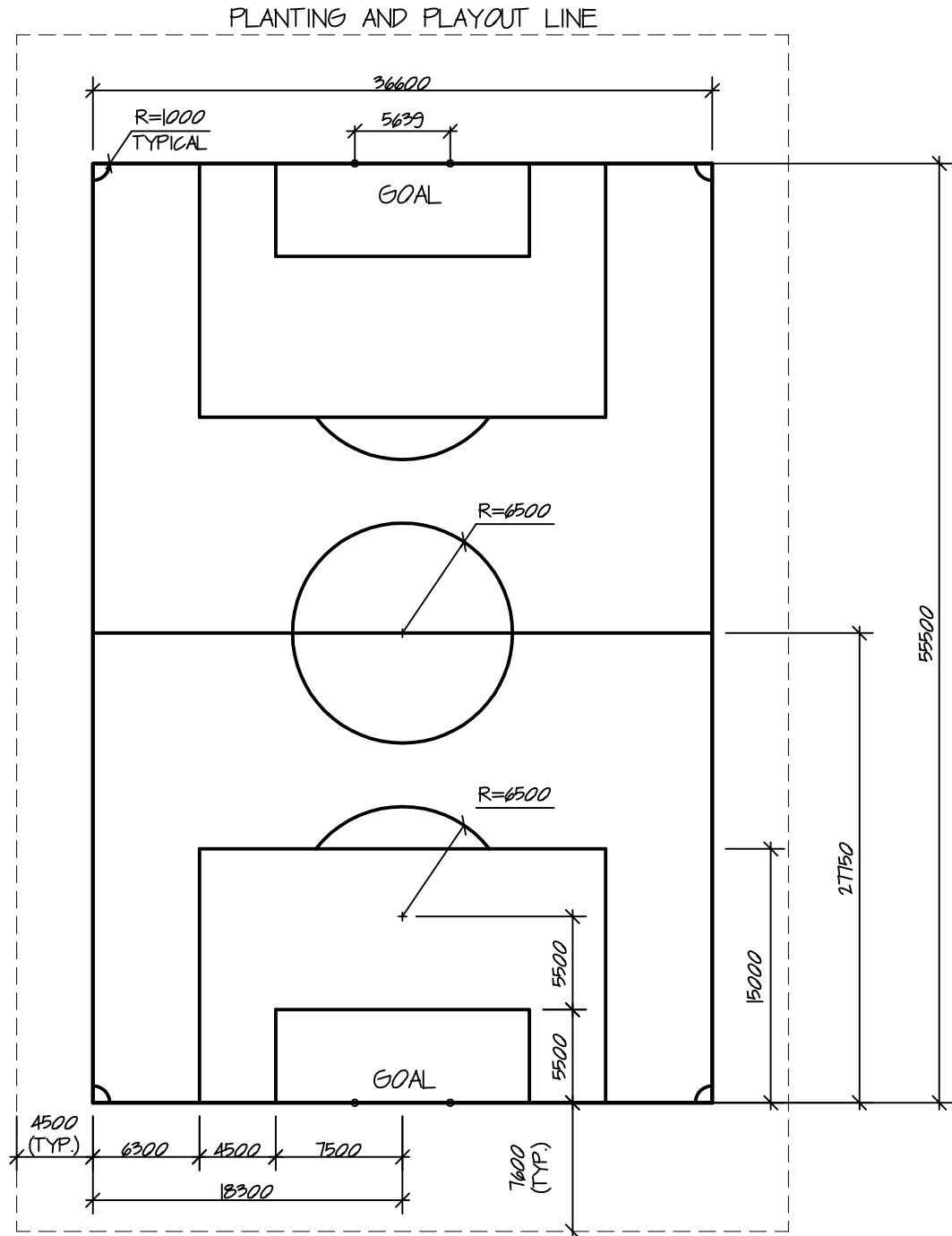


Town of
East Gwillimbury

**SENIOR SOCCER PITCH
TYPICAL IRRIGATION LAYOUT
(SCHEMATIC)**

STANDARD DETAIL

APPROVED	DWG. No.
REVISION No.	128
DATE	
2009	



NOTE:

1. ORIENTATION: GENERALLY NORTH/ SOUTH



Town of
East Gwillimbury

**MINI SOCCER PITCH
- 36.6m x 55.5m**

STANDARD DETAIL

APPROVED

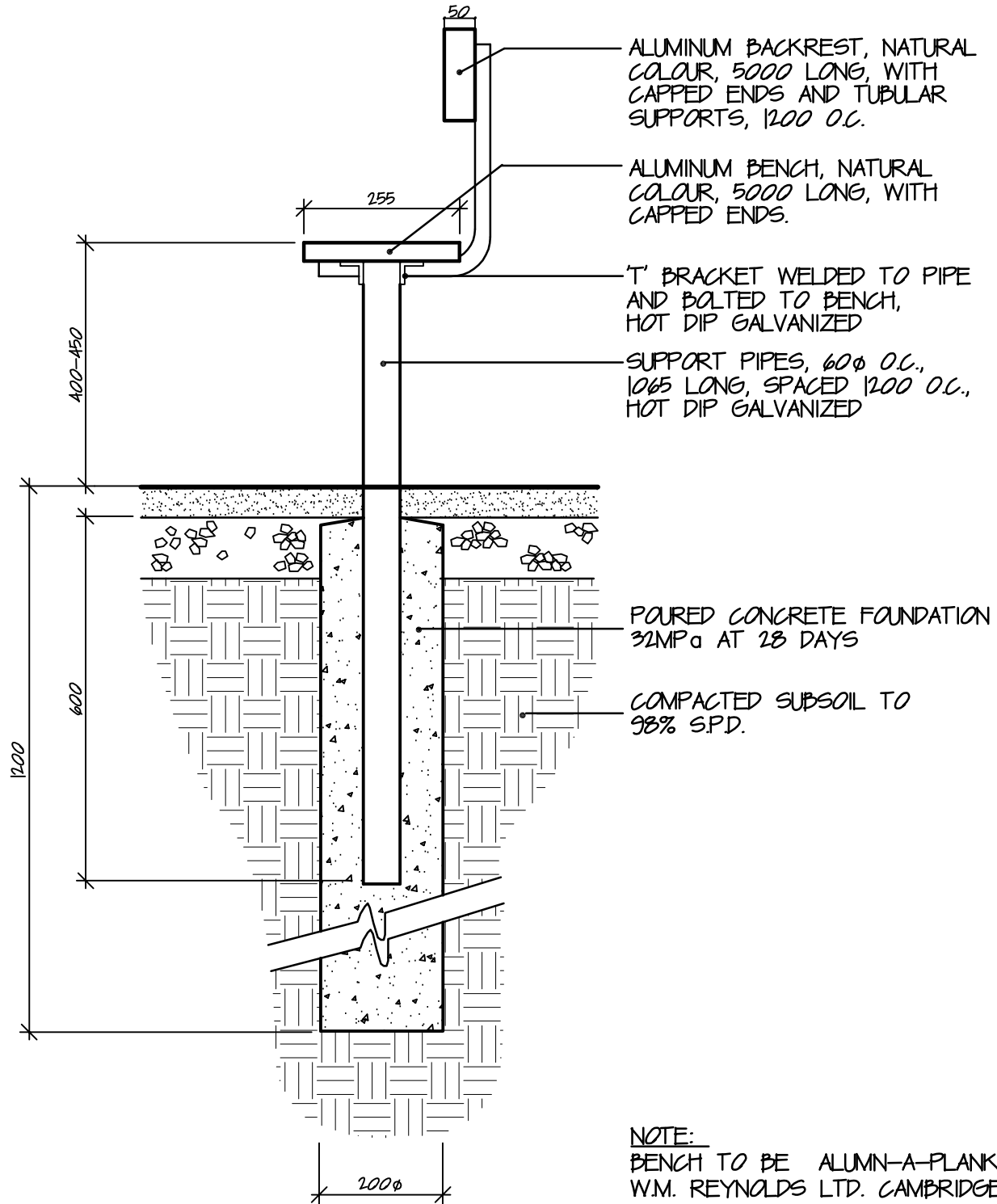
DWG. No.

REVISION No.

129

DATE

2009



NOTE:
 BENCH TO BE ALUMN-A-PLANK, BY W.M. REYNOLDS LTD. CAMBRIDGE, ONTARIO TEL. 1-519-653-9721 OR APPROVED EQUIVALENT

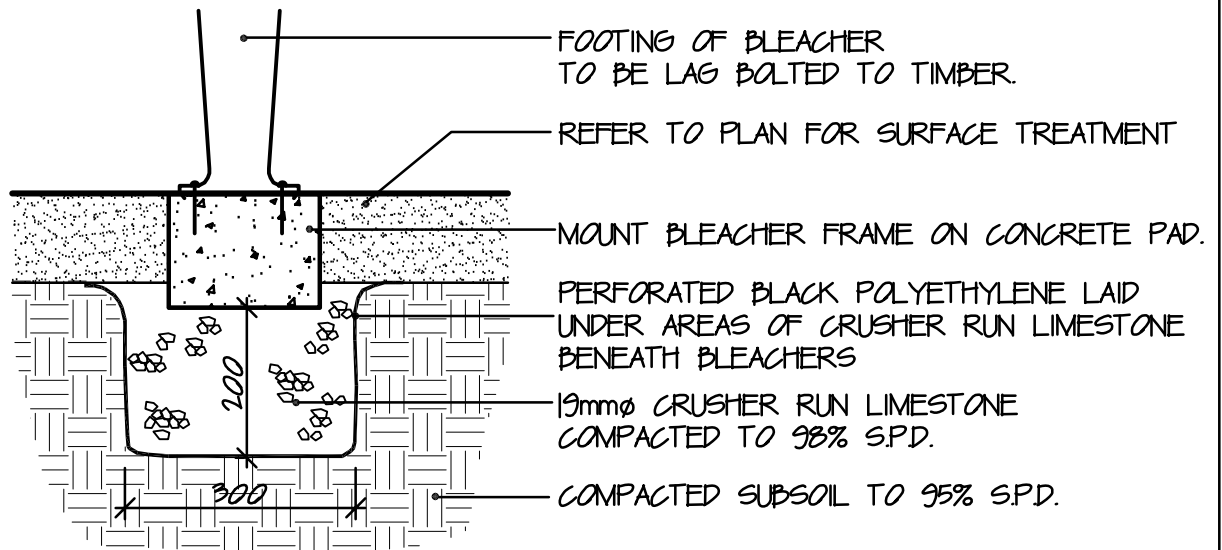


Town of
East Gwillimbury

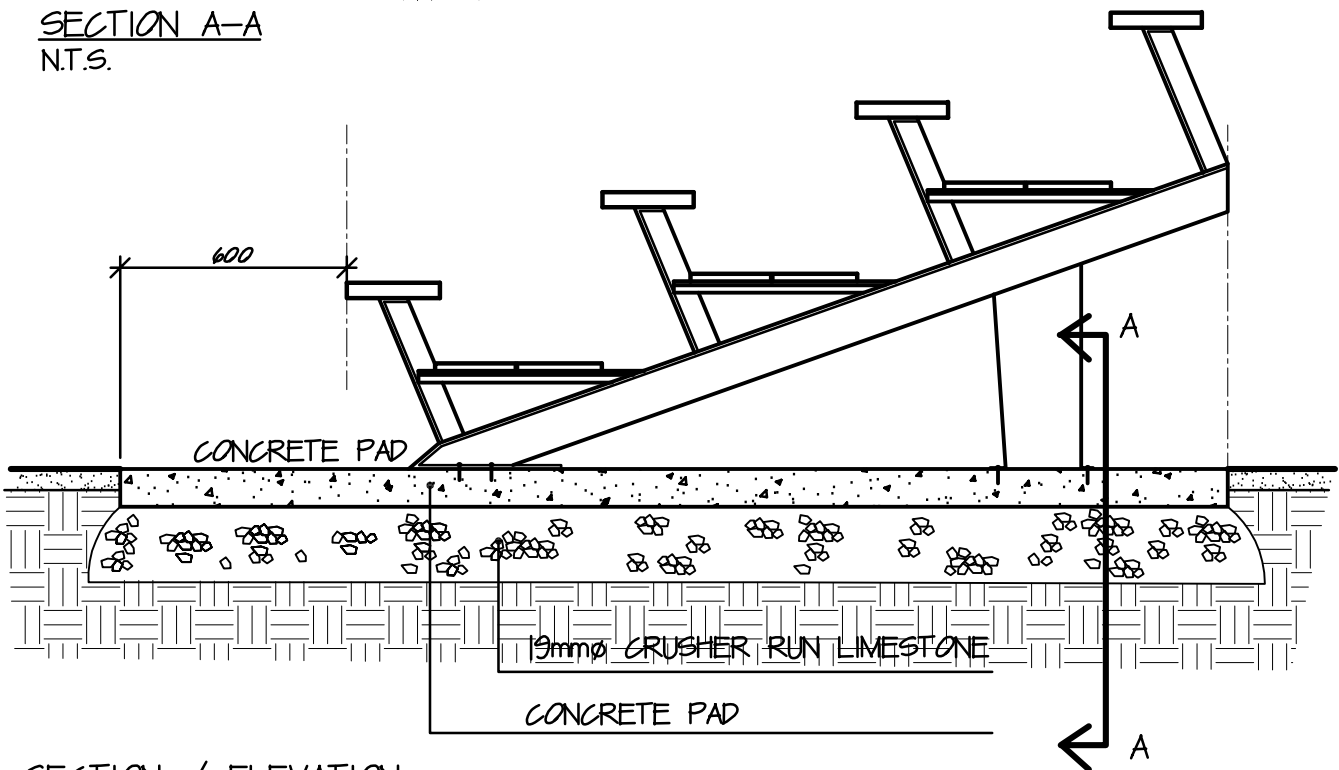
**PLAYERS BENCH
 - SOCCER**

STANDARD DETAIL

APPROVED	DWG. No.
REVISION No.	130
DATE 2009	



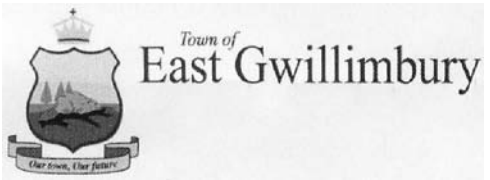
SECTION A-A
N.T.S.



SECTION / ELEVATION
1:20

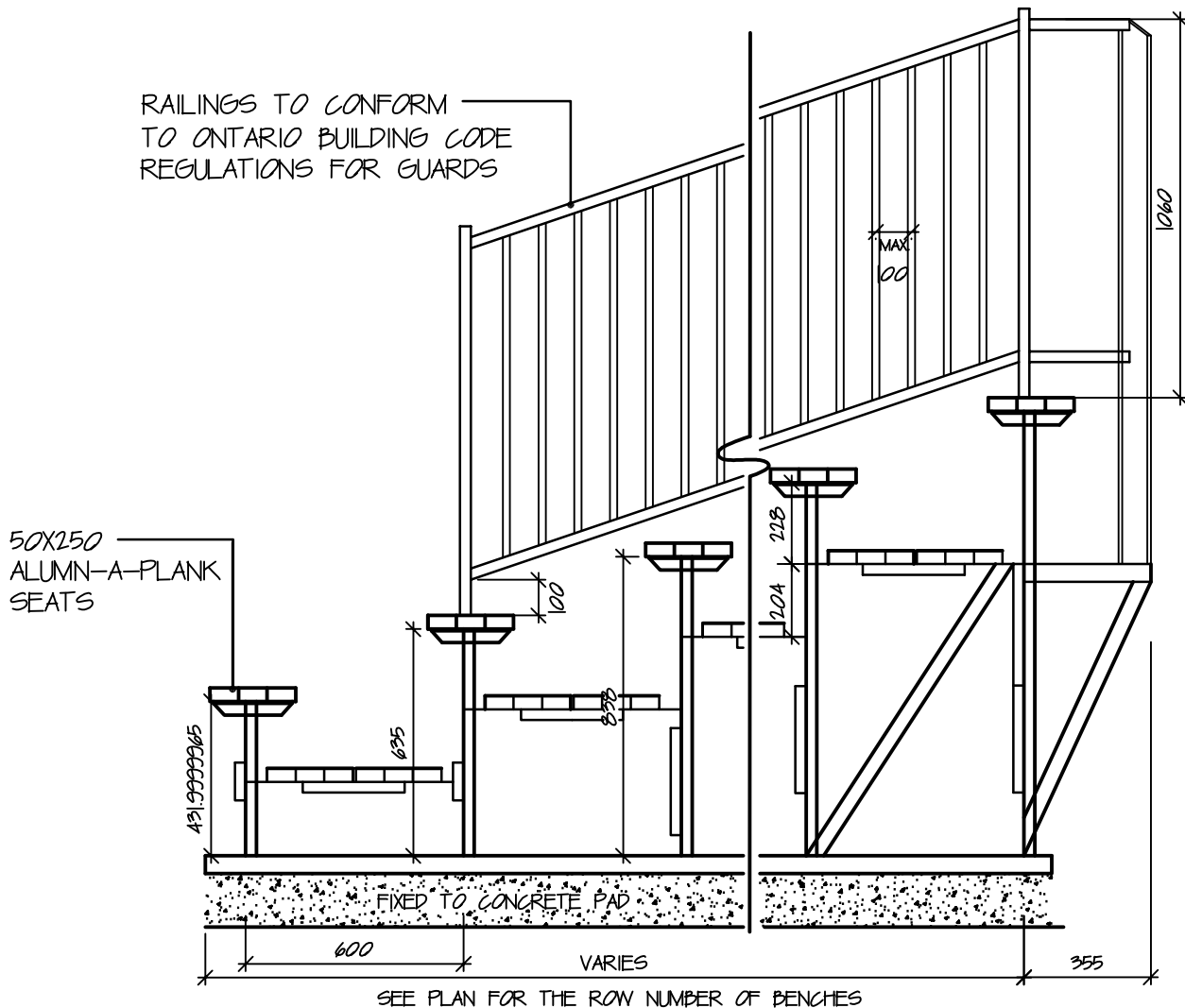
NOTES:

1. THE MANUFACTURER OF THE BLEACHERS MUST BE CERTIFIED BY THE CANADIAN WELDING BUREAU.
2. BLEACHERS TO BE IN ACCORDANCE WITH THE ONTARIO BUILDING CODE.
3. RECOMMENDED MANUFACTURER: W.H. REYNOLDS LTD. BLEACHERS, CAMBRIDGE ONTARIO, MODEL CHANNEL BEAM 27, 5500 LONG OR APPROVED EQUIVALENT



MULTI-TIER METAL BLEACHER

STANDARD DETAIL	
APPROVED	DWG. No.
REVISION No.	131
DATE	
2009	



1. THE MANUFACTURER OF THE BLEACHERS MUST BE CERTIFIED BY THE CANADIAN WELDING BUREAU.
2. BLEACHERS TO BE IN ACCORDANCE WITH THE ONTARIO BUILDING CODE.
3. RECOMMENDED MANUFACTURER:

W.H. REYNOLDS LTD. BLEACHERS,
CAMBRIDGE ONTARIO
OR APPROVED EQUIVALENT

4. SEAT BOARDS TO BE 2" x 10" x 12'0" CLEAR ANODIZED ALUMN-A-PLANK.
5. DOUBLE FOOT BOARDS 2" x 10" x 12'0" MILL FINISHED ALUMN-A-PLANK.
6. BLEACHER FRAMES SPACED @ 6'0" CENTERS (MAX.), HOT DIPPED GALVANIZED AFTER FABRICATION.
7. (2) CROSS BRACE SETS IN EVERY OTHER BAY.
8. ALL STEEL UNDERSTRUCTURE, HARDWARE AND FASTENERS SHALL BE HOT DIPPED GALVANIZED.
9. EACH BLEACHER FRAME MOUNTED ON RECYCLED PLASTIC 2" x 6" x 9'0" SKIDS/SLEEPERS.
10. GUARDS TO BE PROVIDED ON ENDS AND BACK, HOT DIPPED GALVANIZED AFTER FABRICATION AND SHALL CONFORM TO OBC REGULATIONS.
11. SHOP DRAWINGS ARE REQUIRED.



Town of
East Gwillimbury

**MULTI-TIER METAL
BLEACHER WITH RAILING**

STANDARD DETAIL

APPROVED

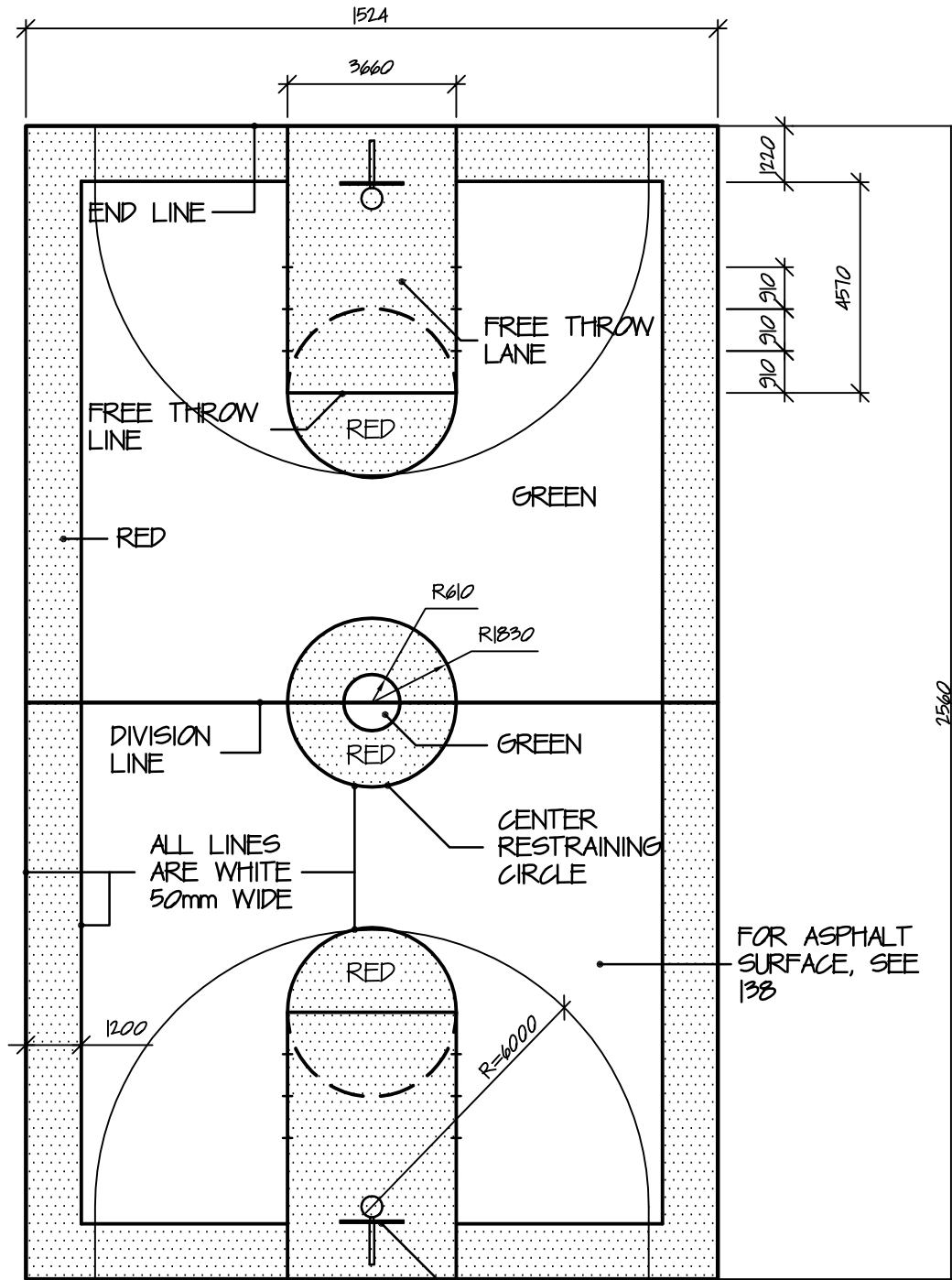
REVISION No.

DATE

2009

DWG. No.

132



NOTE:

ENTIRE SURFACE TO BE COLOUR COATED WITH PLEXIPAVE OR EQUIVALENT, SEE SPECIFICATIONS

FOR BACKBOARD AND POST SEE 137

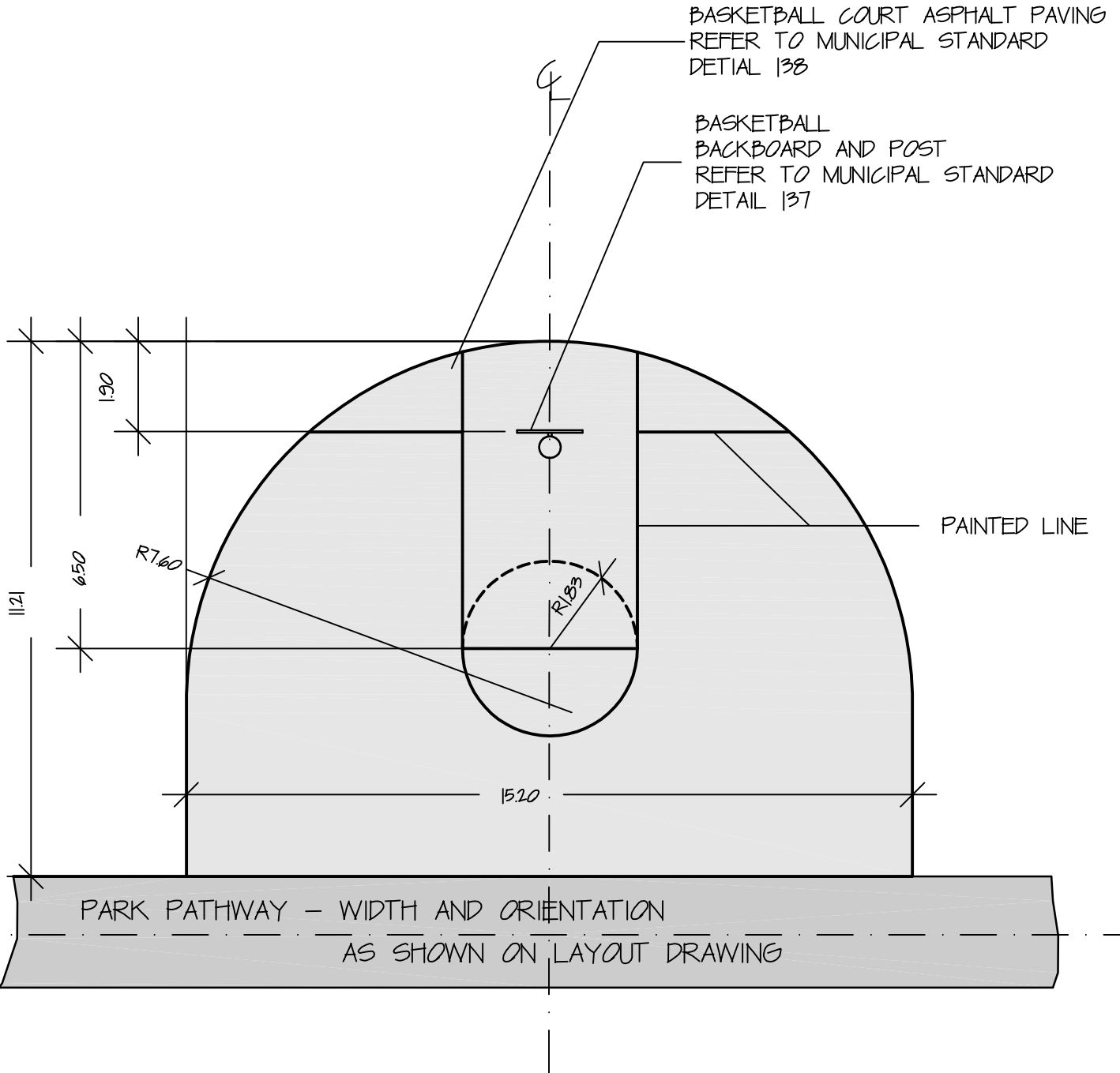


Town of East Gwillimbury

BASKETBALL COURT LAYOUT

STANDARD DETAIL

APPROVED	DWG. No.
REVISION No.	133
DATE	
2009	



NOTE

ENTIRE SURFACE TO BE COLOUR COATED WITH
PLEXIPAVE OR EQUIVALENT, SEE SPECIFICATIONS

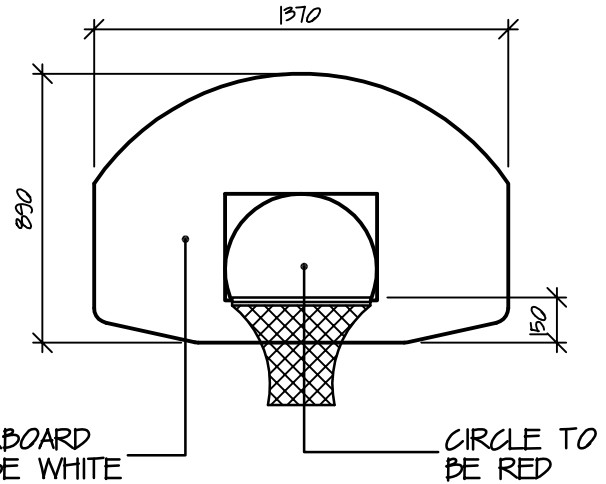
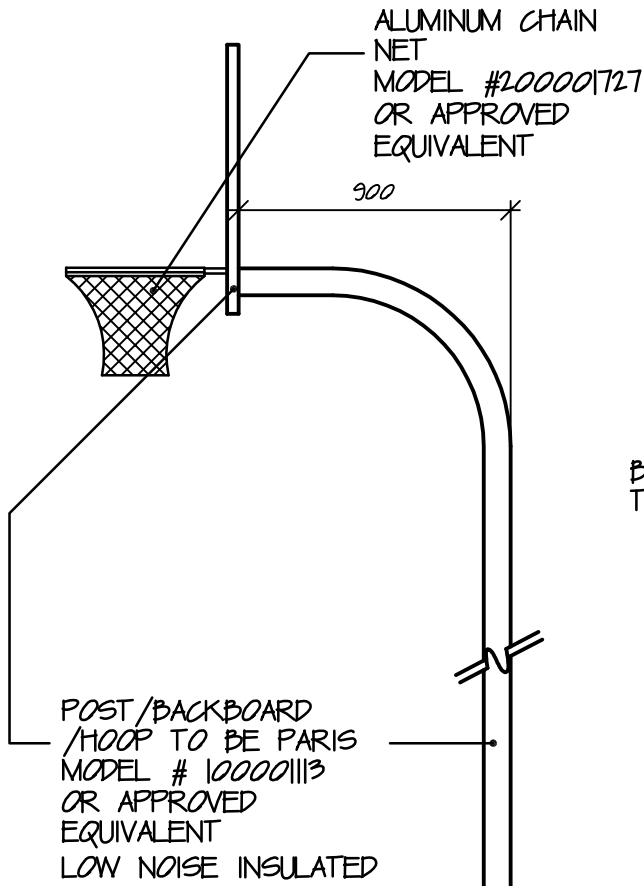


Town of
East Gwillimbury

**BASKETBALL HALF COURT
LAYOUT PLAN**

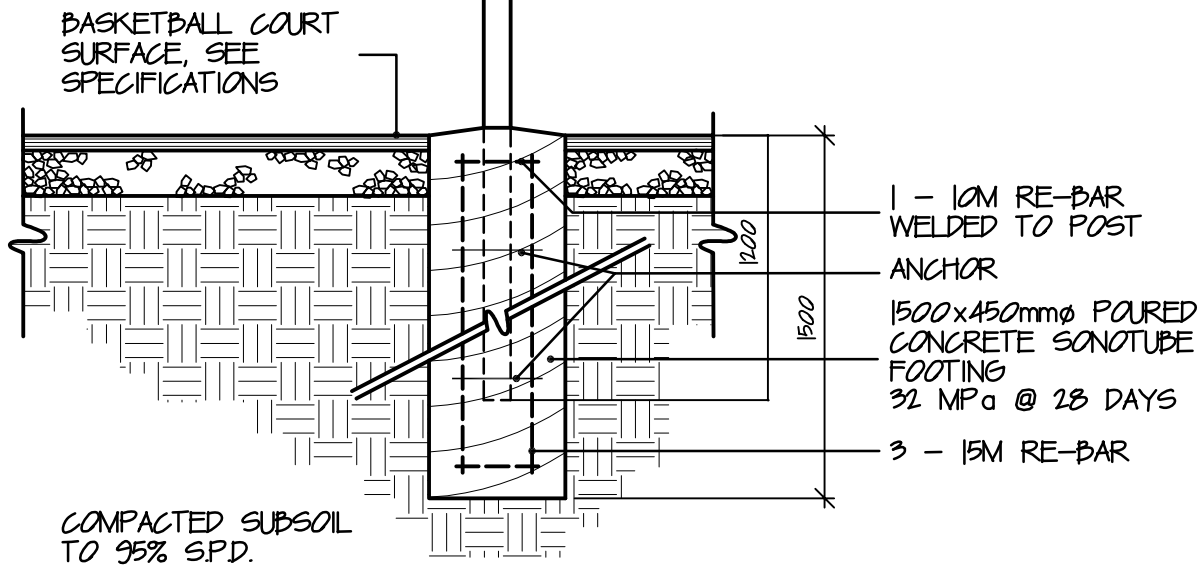
STANDARD DETAIL

APPROVED	DWG. No.
REVISION No.	134
DATE 2009	



Elevation 'B' Basketball Backboard

SUPPLIER; BELAIR RECREATIONAL PRODUCTS
PO BOX 244, PARIS, ON N3L 3E2
1-800-387-6313



Elevation - Section

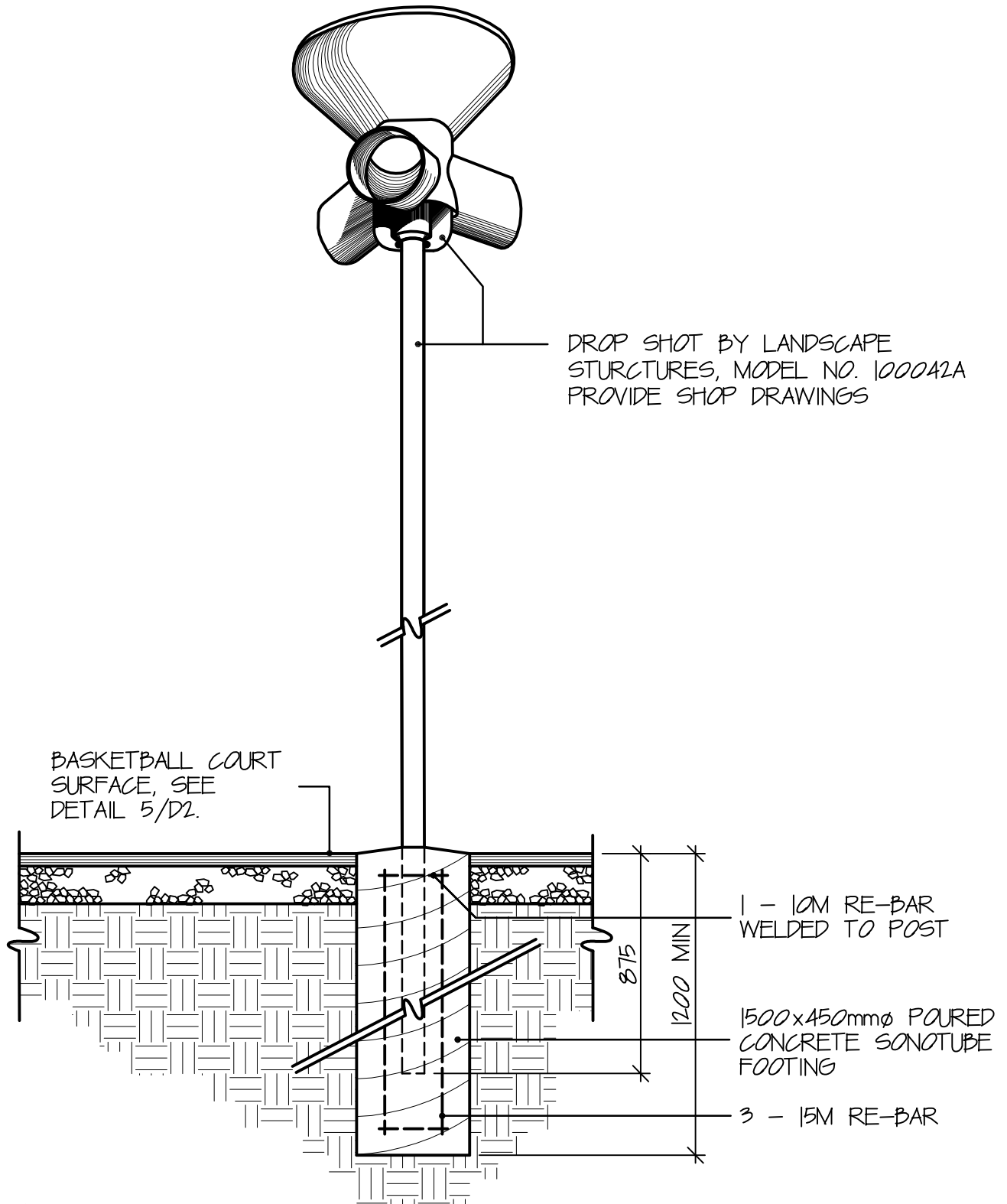


Town of
East Gwillimbury

BASKETBALL BACKBOARD AND POST

STANDARD DETAIL

APPROVED	DWG. No.
REVISION No.	135
DATE	
2009	



1:25
SPRE-008



Town of
East Gwillimbury

BASKETBALL DROP SHOT

STANDARD DETAIL

APPROVED COUNCIL

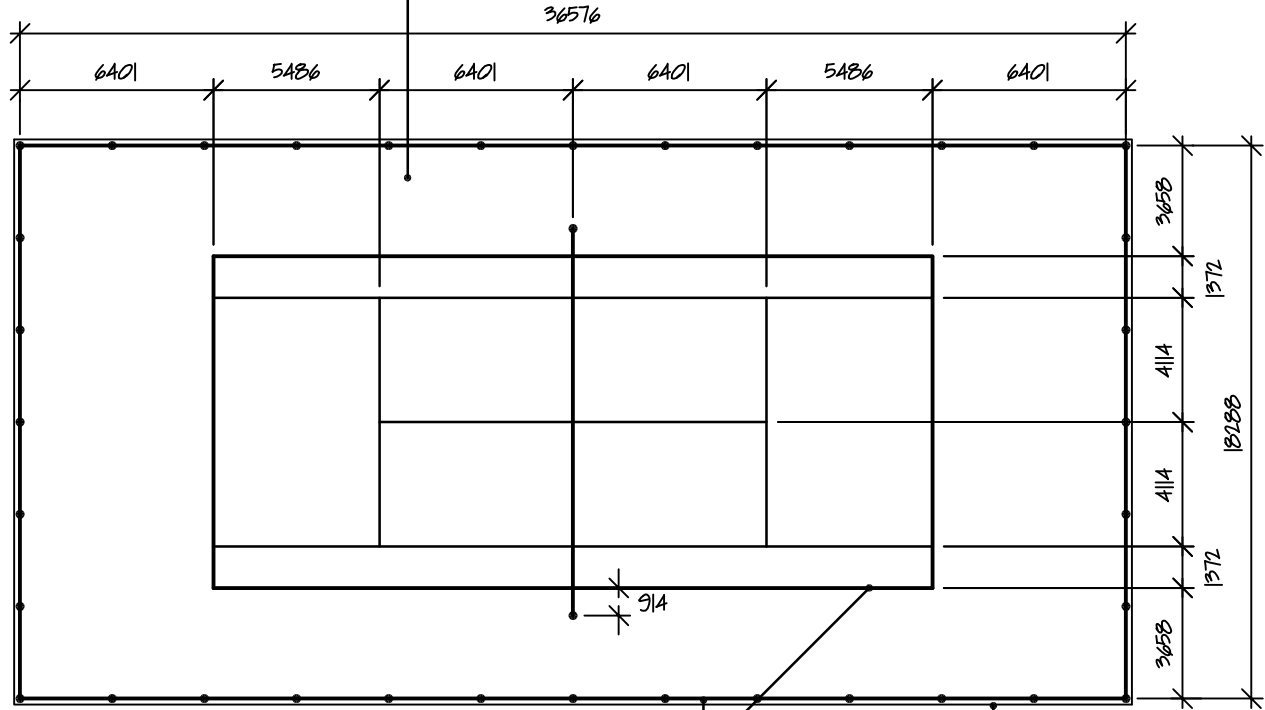
DWG. No.

REVISION No.

136

DATE
2009

ASPHALT TENNIS COURT
REFER TO 141

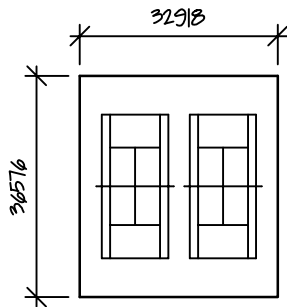


3050mm HIGH CHAINLINK FENCE AND TENNIS COURT BUILT TO SPECIFICATIONS

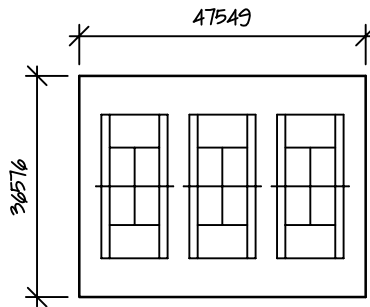
1 ROW OF 100x200mm UNIT PAVING AROUND COURT PERIMETER—SEE 141

NOTE:

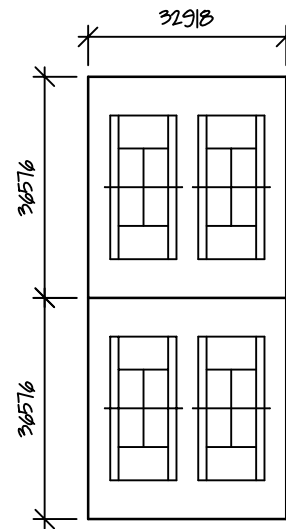
1. ALLEY SPACE BETWEEN COURTS IN BATTERY LAYOUT TO BE 3658.
2. ORIENT COURTS LENGTHWISE NORTH/SOUTH.



Plan—
2 in Battery



Plan—
3 in Battery



Plan—
4 in Battery



Town of
East Gwillimbury

**TENNIS COURT LAYOUT
PLAN**

STANDARD DETAIL

APPROVED

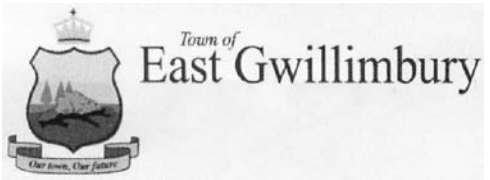
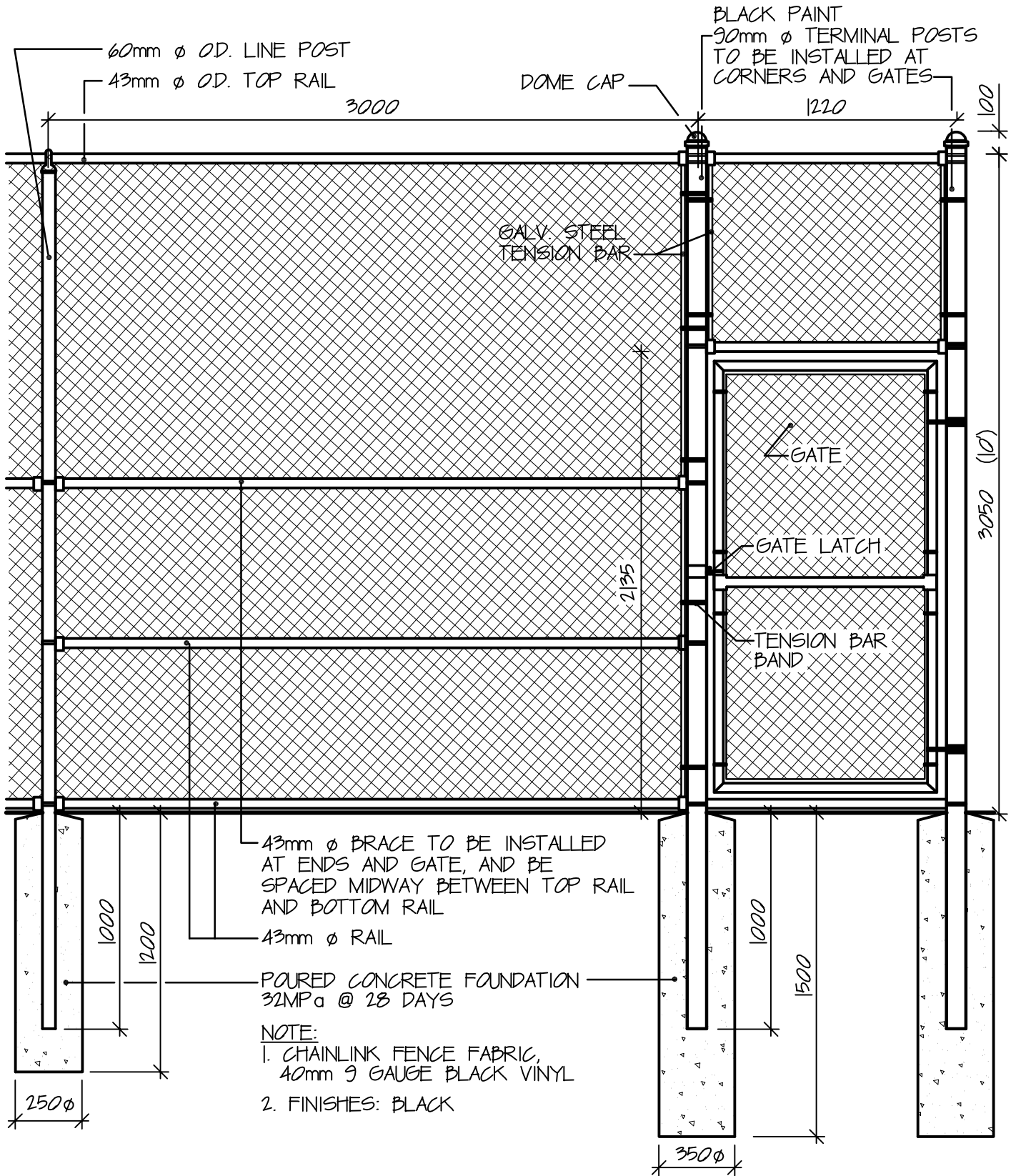
DWG. No.

REVISION No.

138

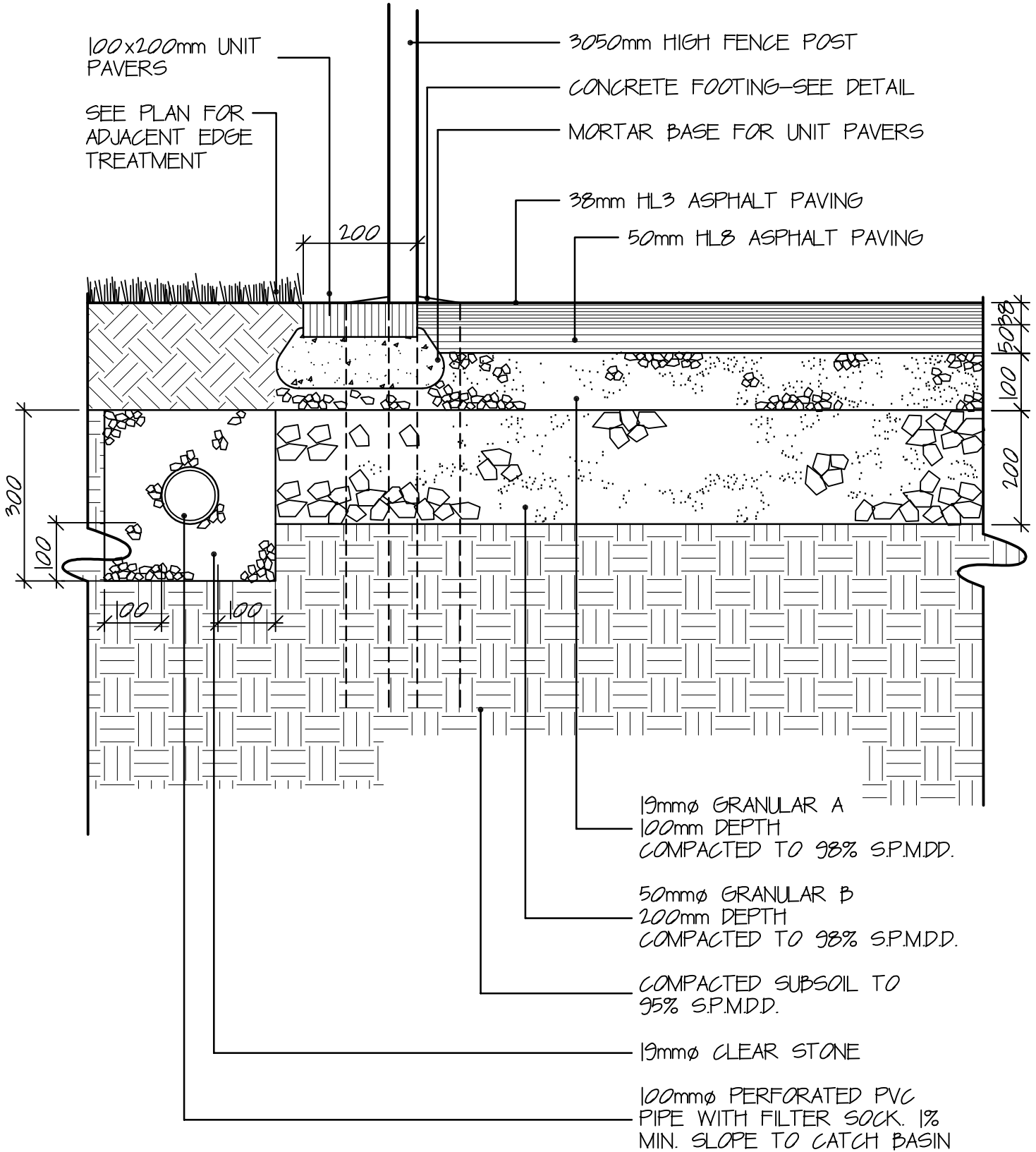
DATE

2009



TENNIS COURT FENCE & GATE

STANDARD DETAIL	
APPROVED	DWG. No.
REVISION No.	139
DATE	
2009	



NOTE:

1. ENSURE THAT ALL ORGANIC MATTER IS REMOVED FROM THE EXCAVATED COURT PRIOR TO PLACING GRANULAR.
2. ALL LINES TO BE PAINTED WHITE AND 50mm WIDE.



Town of
East Gwillimbury

**TENNIS COURT ASPHALT
SURFACE**

STANDARD DETAIL

APPROVED

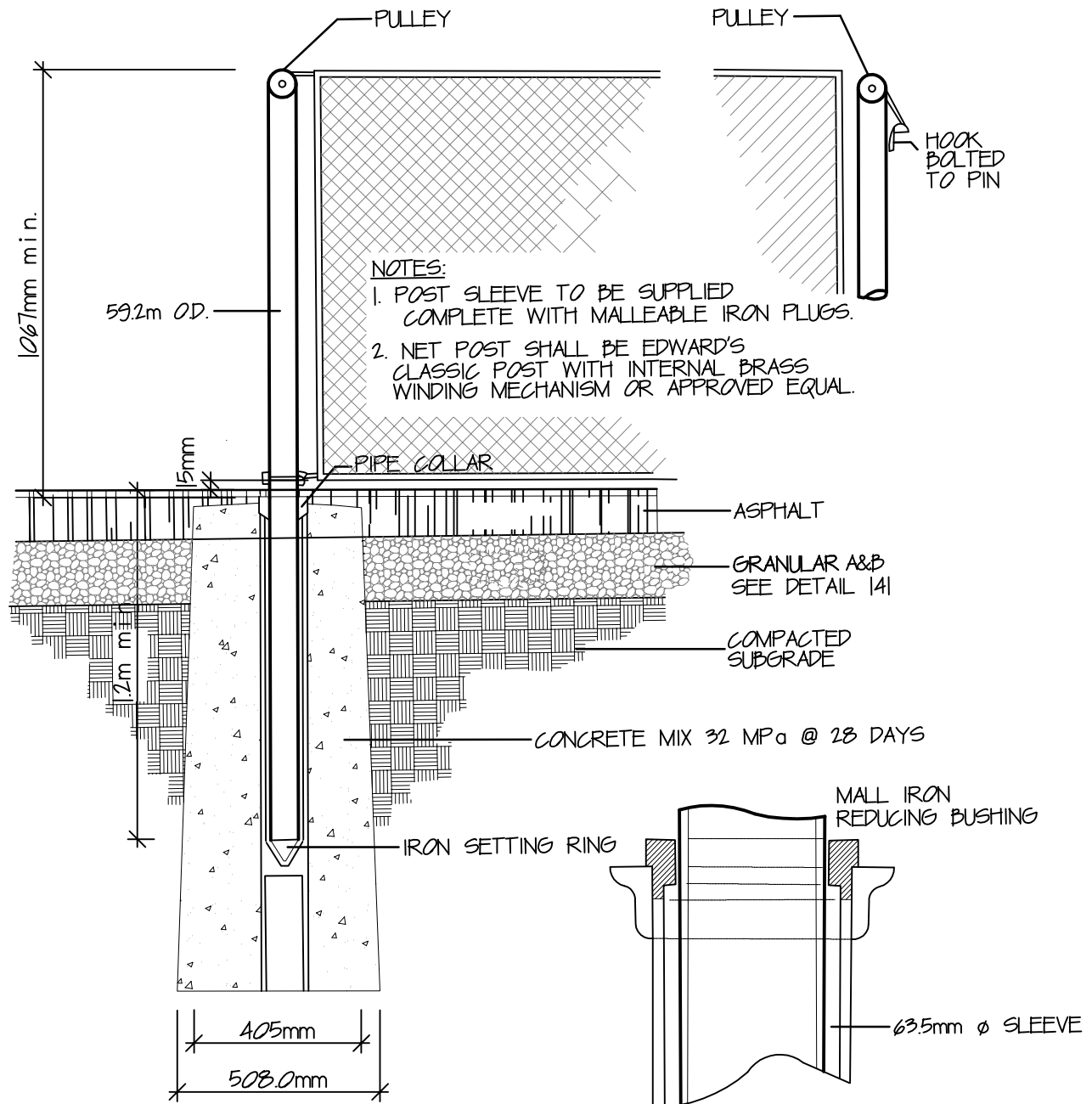
DWG. No.

REVISION No.

140

DATE

2009



SECTION OF PIPE COLLAR



Town of
East Gwillimbury

TENNIS COURT NET

STANDARD DETAIL

APPROVED

DWG. No.

REVISION No.

141

DATE

2009